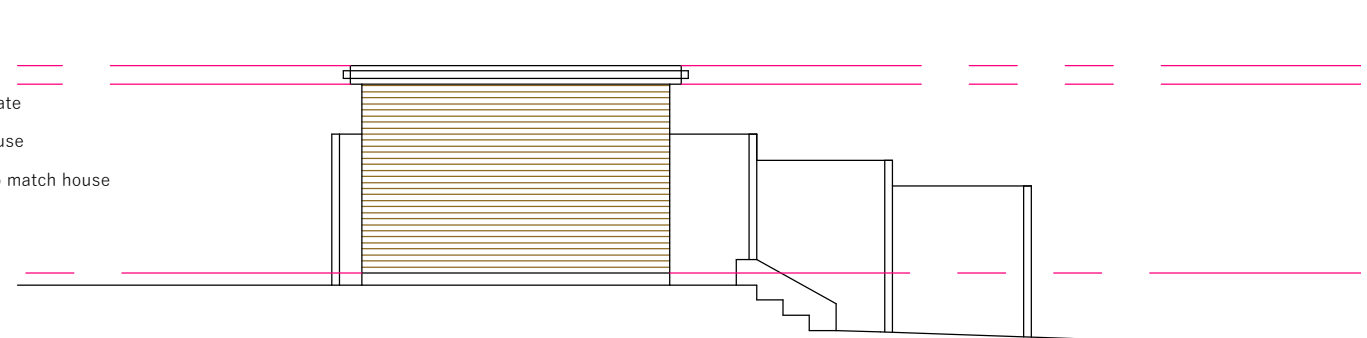


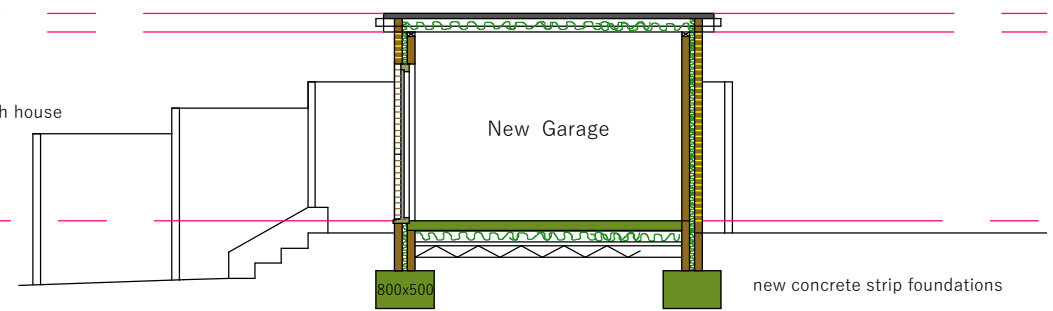
0 North East Elevation
(proposed)



0 South West Elevation
(proposed)

Proposed New Garage

black uPVC gutter and white fascia
2800 mm top of GRP roof cover
2550 mm underside of timber wall plate
red/brown face brick to match ex house
white uPVC double glazed window to match house
timber door and frame
000 top of concrete surface bed
-600 mm ngl at lower level



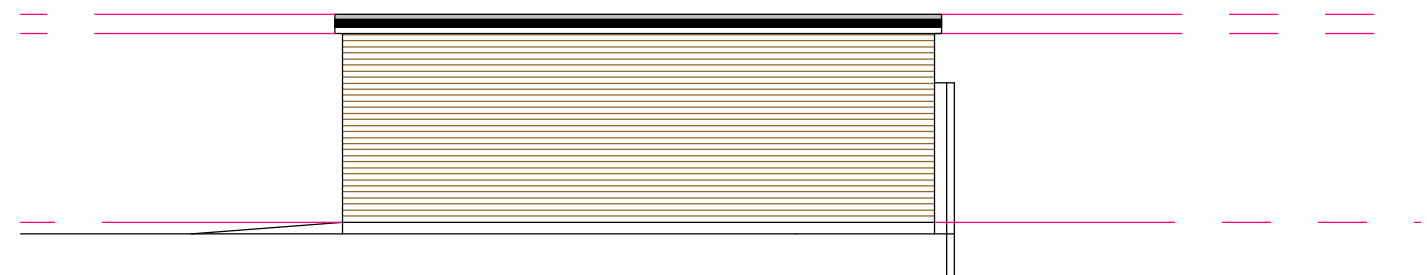
0 Section B - B
(proposed)

100mm concrete surface bed on 1500 micron DPM on 50mm
clean sand on 100mm floorshield insulation on 2 layers
150mm imported filling well watered and compacted

black uPVC gutter and white fascia
2800 mm top of GRP roof cover
2550 mm underside of timber wall plate
red/brown face brick to match ex house
white uPVC double glazed window to match house
timber door and frame
000 top of concrete surface bed
-600 mm ngl at lower level

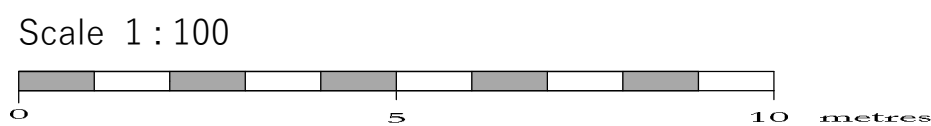


0 South East Elevation
(proposed)



0 North West Elevation
(proposed)

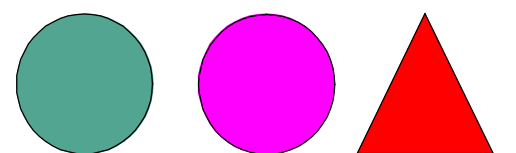
0 Elevations



PROJECT House H | Duong PROJEK

Double storey side and part single storey rear extension. New staircase to Loft
and New Garage at the bottom of the back garden
No 18 Gravel Hill, Bexleyheth DA6 7PN

08



CHRISTOPHER
COWLEY AND
ASSOCIATES

079-86340719

c.cowley@tiscali.co.uk