

QUANTUM:EV

EV OPENCHARGE

Type 2, Mode 3 Charging Socket(s)
(GPRS/Ethernet Communication)
3.6kW or 7.2kW

ROLEC
EV Charging

MANUFACTURED IN THE UK



COMPLIANT



The QUANTUM:EV OPENCHARGE pedestal is a sophisticated and resilient EV charging point, providing a combination of durability and impeccable design for all locations.

This ultra-modern OCPP compliant pedestal can offer a simple pay-to-charge solution via the EV driver's smartphone and/or RFID card/fob authorisation through any chosen OCPP back office management system.

Available in both 1way or 2way versions, providing Mode 3 fast charging in 3.6kW or 7.2kW speeds, this unit features a built in GPRS antenna and Ethernet connection.



Unit shown: QUANTUM:EV
EV OPENCHARGE
2way Socket (Type 2) Charging Pedestal

PRODUCT FEATURES

- Mode 3 (IEC 61851-1) fast charging
- Available in 1way / 2way & 3.6kW (16A) / 7.2kW (32A) versions
- Type 2 (IEC 62196) charging socket(s) c/w security hatchlock(s)
- OCPP 1.6 compliant (Can integrate with any back office)
- Remote firmware updates
- Built-in RFID reader
- Photocell controlled LED amenity lighting head
- Surface or roof mountable
- Built-in AC overload protection (MCB)
- Built-in AC & DC fault protection (RCD)
- Built-in LED charging status indicator socket halo(s)
- Built-in class 1 MID compliant kWh meter(s)
- EV driver Pay-to-Charge smartphone integration
- OLEV Grant Fundable under the Workplace Charging Scheme
- Easy to install & maintain
- IP Rated, UV stabilised, fire retardant, IK10 impact & corrosion resistant

Chargepoint Management

Unless otherwise stated at time of order, EV OPENCHARGE units will be automatically programmed to operate via the Rolec VENDELECTRIC back office management system.



See the VENDELECTRIC sheet Overview for details



OCPP 1.6
Compliant



Grant
Fundable



GPRS / Ethernet
Connectivity



Branding & Colour
Options Available






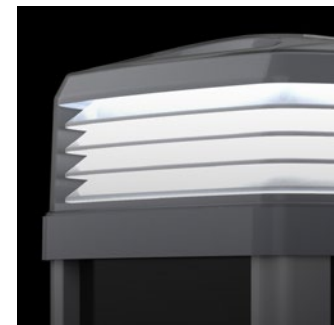
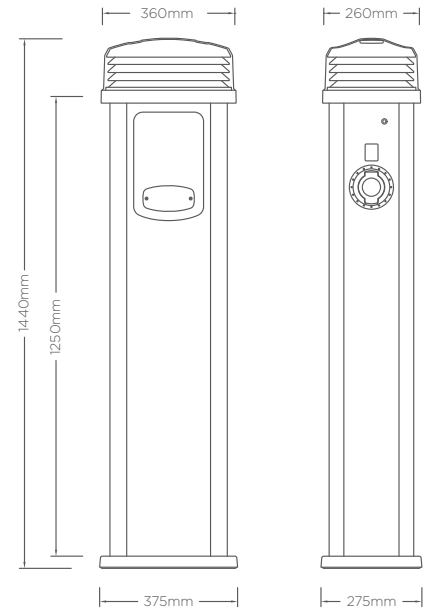
LED Amenity
Lighting



IP Rated &
UV Stabilised

SPECIFICATIONS

| | | | | |
|---|--|-------------|---|--------------|
| Product Code | OCPP0410 | OCPP0411 | OCPP0420 | OCPP0421 |
| Charging Socket(s) | 1x Type 2 (IEC 62196)  | | 2x Type 2 (IEC 62196)  | |
| Rated Output | 3.6kW | 7.2kW | 3.6kW | 7.2kW |
| Rated Current | 16A | 32A | 16A | 32A |
| Charge Protocol | Mode 3 | | | |
| Input Voltage | 230V AC/50Hz (Single Phase) | | | |
| AC Overload Protection | 1x C20A MCB | 1x C40A MCB | 2x C20A MCBs | 2x C40A MCBs |
| AC & DC Fault Protection | 1x Type B RCD | | 2x Type B RCDs | |
| Cable Terminals | 3x 50mm | | | |
| Communications | GPRS (Recommended signal strength of 14 CSQ or above) RJ45 ethernet connection | | | |
| Standby Consumption | Approx 0.4kWh per day | | | |
| Certifications & Compliances | EV Charging Compliance – EN 61851-1:2011, BS EN 62196-1:2014, BS EN 62196-2:2017 Wiring Regulations – BS 7671 EMC Compliance – EN 301 489-01 V2.2.0, EN 301 489-03 V2.1.1, EN 301 489-52 V1.1.0, EN 50470-1:2006 (1x Skt) or EN 55032:2012 (2x Skts) Spectrum/Telecom – EN 301 511 V9.0.2, EN 300 330 v2.1.1 RED – 2014/53/EU – EN 62311:2008 Safety Compliance (LVD) – 2014/35/EU Impact Rating – IK10 (BS EN 62262) Environmental Protection – Enclosure IP66, Socket IP54 (BS EN 60529:1992+A2:2013) | | | |
|   | | | | |
| Dimensions | 375mm x 1440mm x 275mm (W x H x D) | | | |
| Substructure Material | 2.5mm thick, high quality 6063 extruded aluminium with a 25 micron hard anodised protective cosmetic finish | | | |
| Panel Material | 3.2mm Aluminium composite | | | |
| Lens Material | High impact resistant 3mm polycarbonate | | | |
| Base Material | High impact resistant, heavy-duty 5mm polycarbonate | | | |
| Lid/Sandwich Material | High impact resistant polycarbonate | | | |
| Operating Temperature | -30°C to +50°C | | | |
| Standard Panel Colour | Black (Other colours available upon request) | | | |



EV OPENCHARGE

- Smart charging control via mobile phone and/or RFID
- Can integrate with any chosen OCPP back office management system
- Open Charge Point Protocol 1.6 (OCPP 1.6)
- On board GPRS modem with antenna
- Ethernet connection

OPTIONS & ACCESSORIES

- RFID card/fobs
- Load Manager system (electrical distribution management)
- Corporate branding (colours, logo badge, etc.)
- Galvanised steel ground mounting base
- Protection barriers
- Charge point signage
- EV charging cables (Type 1 to Type 2 or Type 2 to Type 2)



Images are for marketing purposes only and are not contractual © 2020



Head office contact:
t: +44 (0) 1205 724754
f: +44 (0) 1205 724876
rolec@rolecserv.co.uk

Rolec Services Ltd
Ralphs Lane, Frampton West
Boston, Lincolnshire
UK. PE20 1QU

 @RolecEV
 /Rolec-Services
www.rolecserv.com

EVQROCD-V02-R2 Quantum EV OpenCharge - Data Sheet