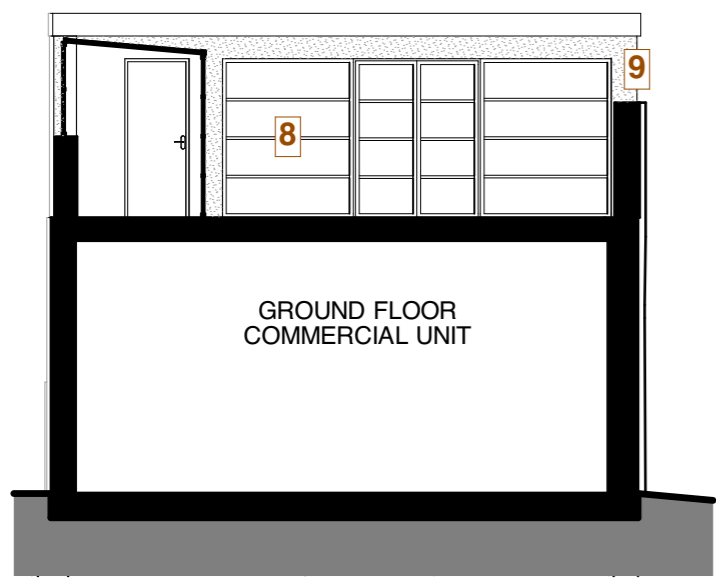
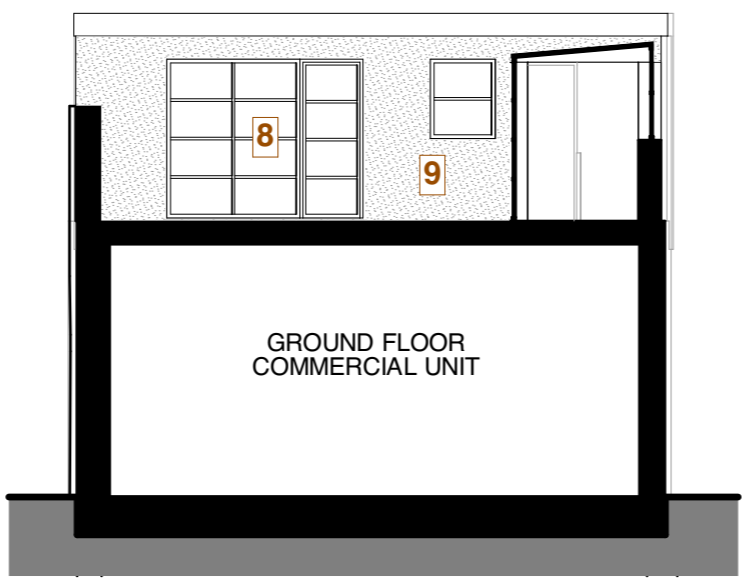


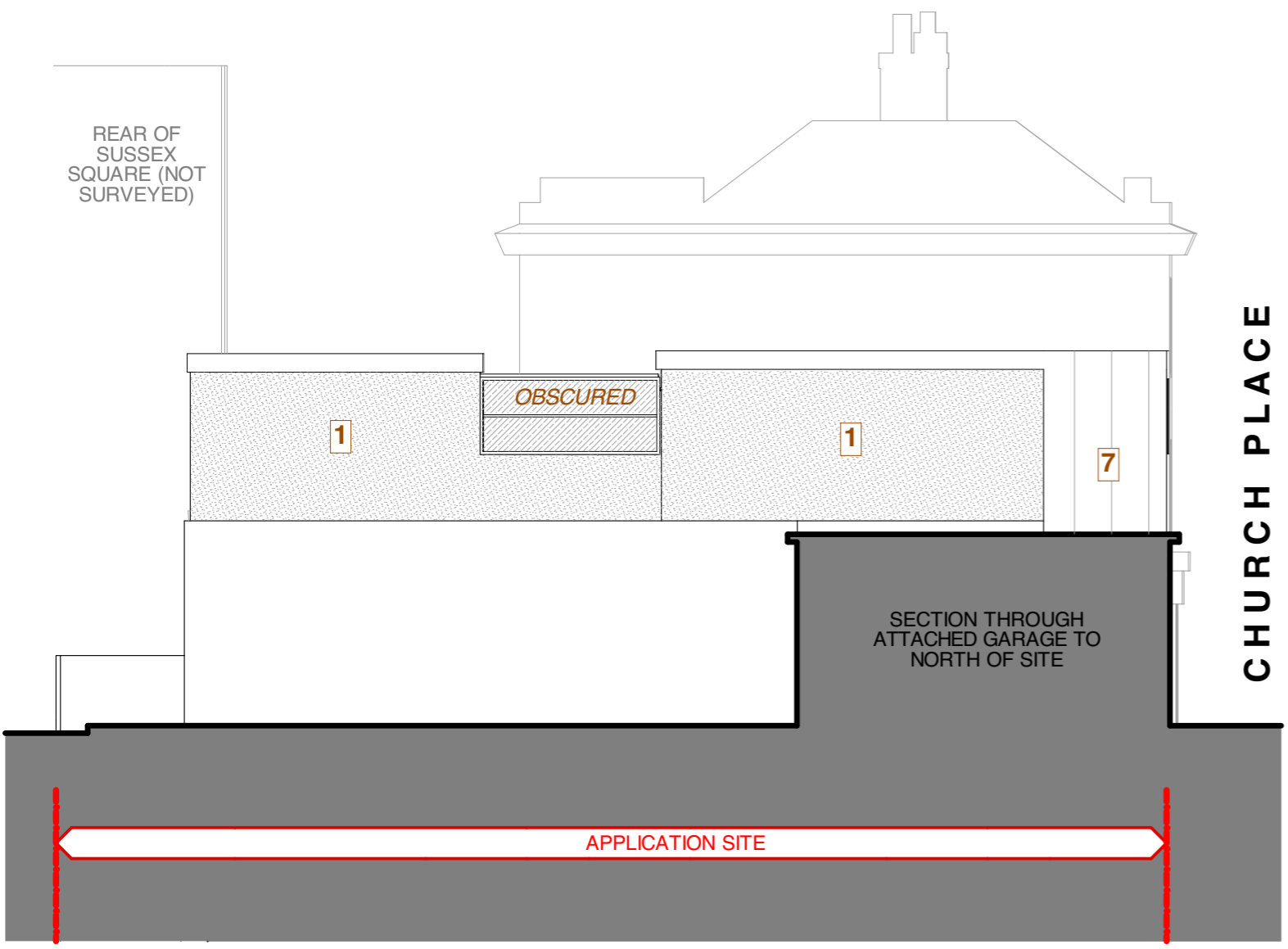
- 1** Render (painted white)
- 2** brick (painted)
- 3** Clay tile hanging (Red multi)
- 4** UPVC windows (white)
- 5** Render (unpainted/dirty)
- 6** Brick (orange)
- 7** Aluminium cladding (black)
- 8** Alum. windows/doors (black)
- 9** Render (painted black)



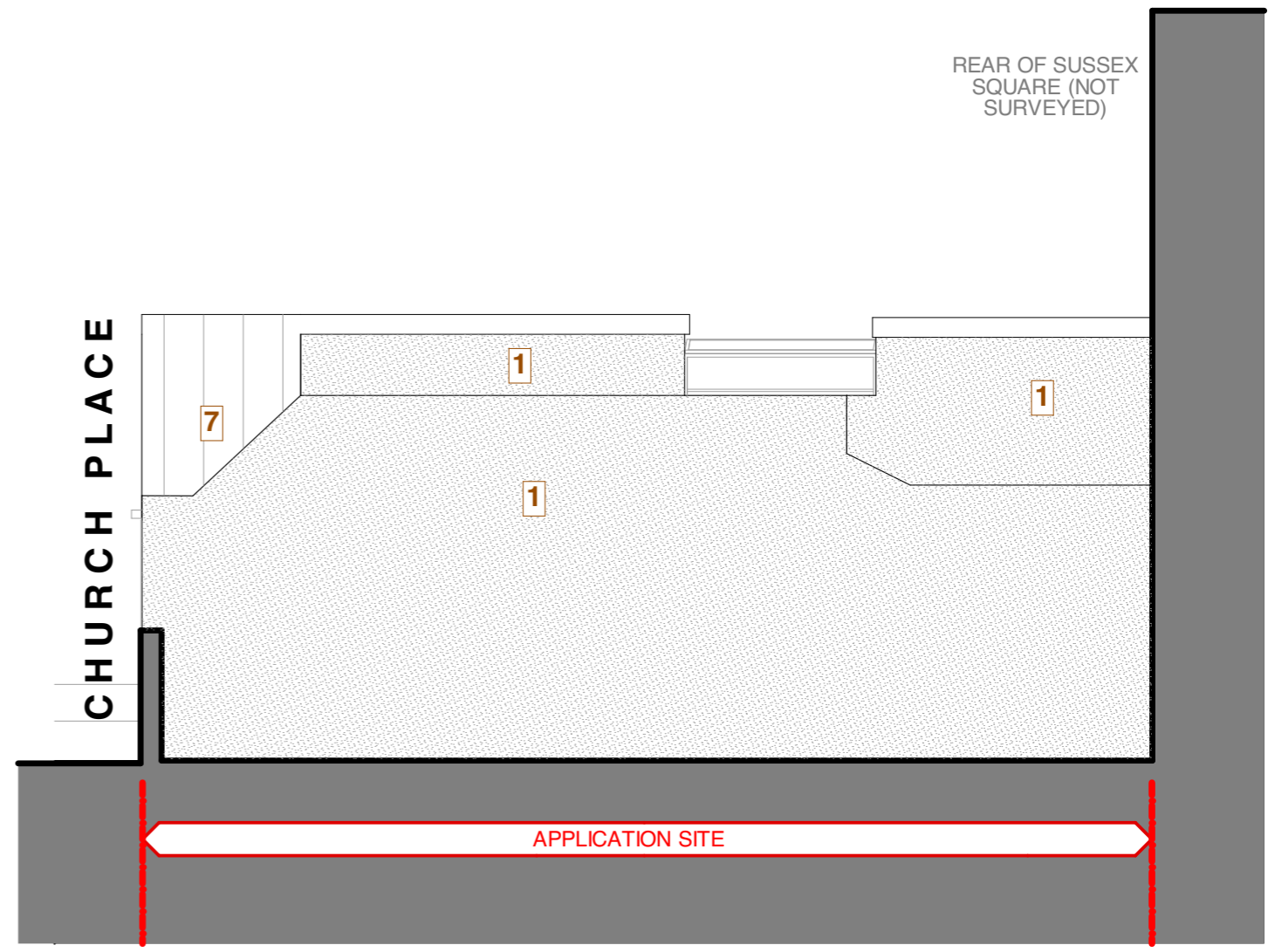
WEST COURTYARD ELEVATION:100



EAST COURTYARD ELEVATION 1:100



NORTH ELEVATION 1:100



SOUTH ELEVATION 1:100