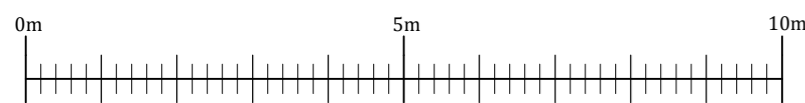
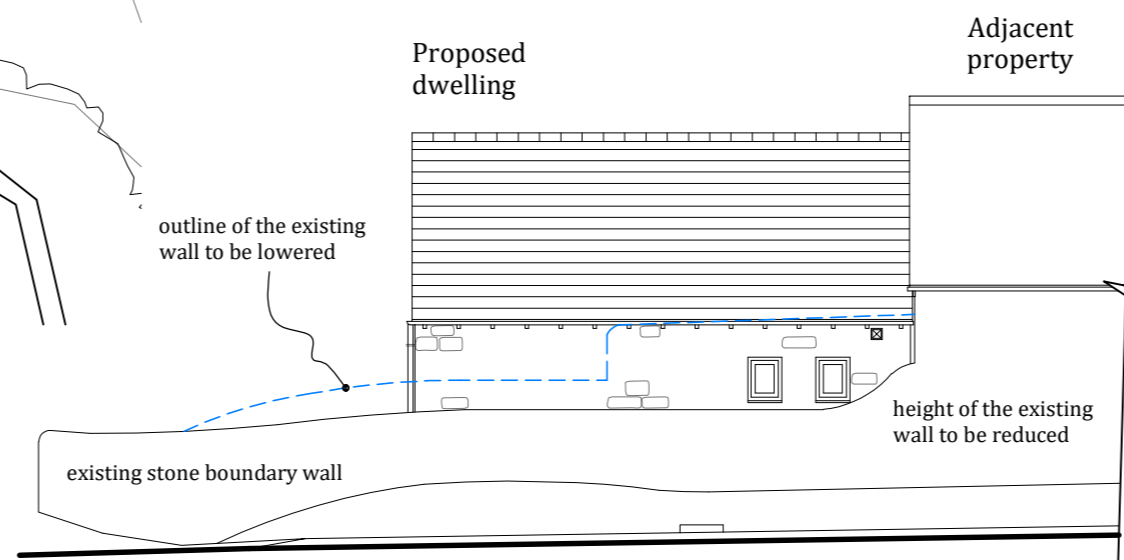
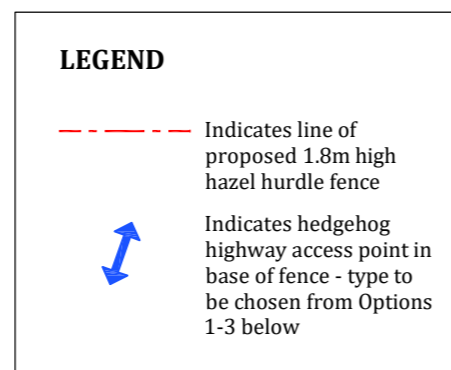


Site Plan showing boundary treatments

Scale: 1 : 100



Scale bar - 1 : 100



East elevation

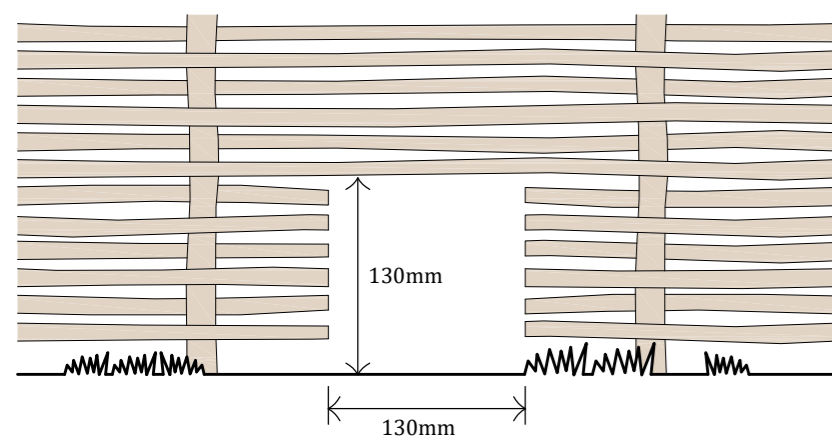
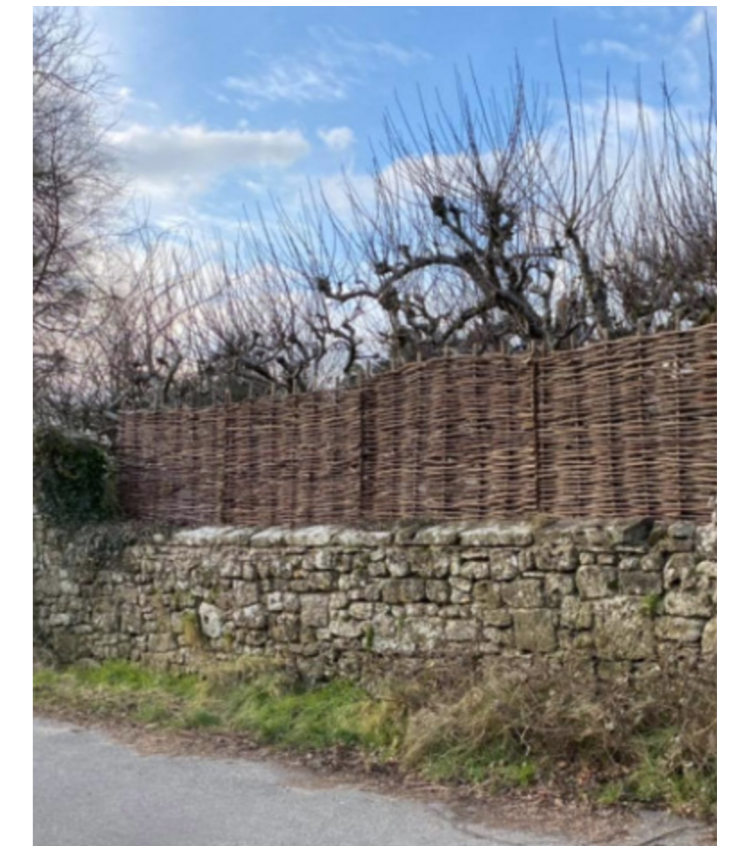
Scale: 1 : 100



approx' 1.8m

Traditionally woven hand-made Hazel Hurdle panels supplied by Batsford Timber Ltd (or similar, subject to stock availability).

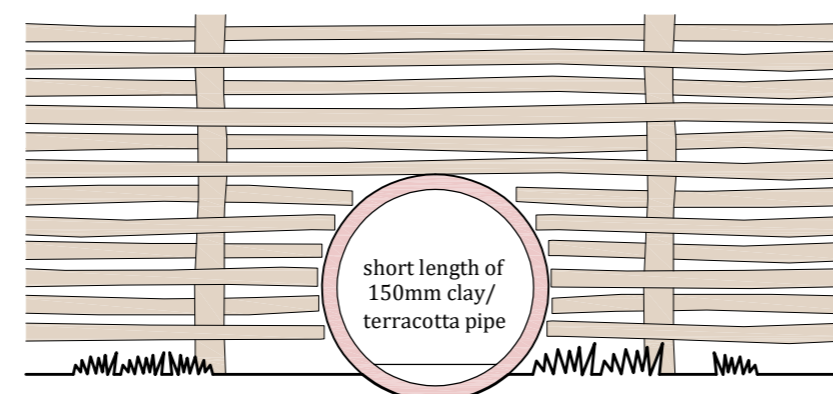
Each panel is approx' 1.8m high.



Option ① Hedgehog Highway opening in fence

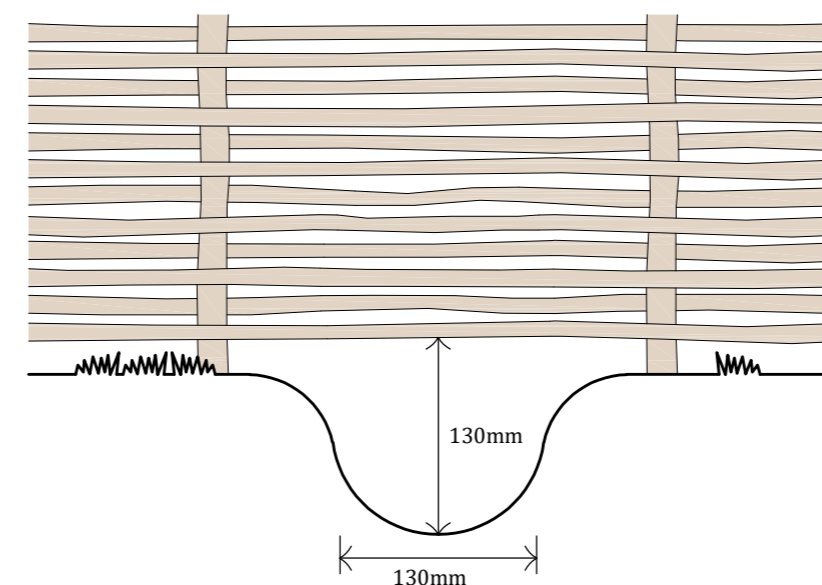
130mm square opening formed by cutting horizontal hazel hurdles between two uprights. Hedgehog sign (see image) to be fixed to fence above opening using galvanised metal wire or similar.

Scale: 1 : 5



Option ② Hedgehog Highway opening using clay pipe

Short length of 150mm clay or terracotta pipe slightly bedded in the ground and fitted through opening formed by cutting horizontal hazel hurdles between two uprights. Hedgehog sign (see image) to be fixed to fence above opening using galvanised metal wire or similar.



Option ③ Hedgehog Highway opening under fence

Form opening by digging a short trench in the soil to create 130mm space for hedgehogs to pass under the fence. This option would leave the hazel hurdles intact. Hedgehog sign (see image) to be fixed to fence above opening using galvanised metal wire or similar.

© 2024 Cleford Essex Associates Ltd. All rights reserved.

Cleford Essex Associates

14 White Lion Walk, Banbury, Oxon. OX16 5UD.
Telephone 01295 257556.

Project Proposed new dwelling on land adjacent to Hunts Cottage, Great Rollright.

Drawing **PLANNING CONDITIONS:** Site plan showing the proposed boundary treatments.

Scale 1 : 100 & 1 : 5

Date February 2024

Sheet Size A2

DRAWING No. 2335 - PC - 02