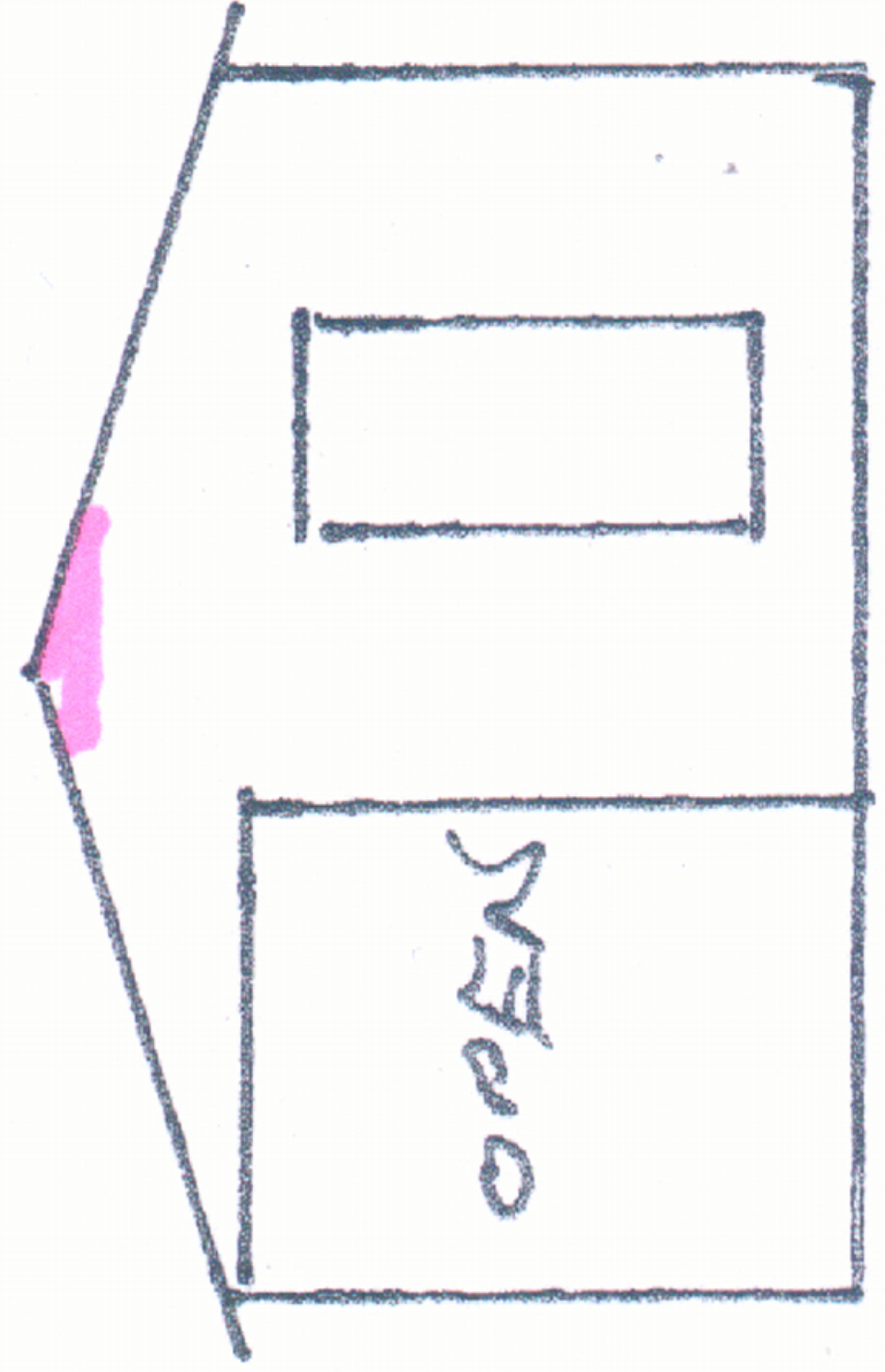


LOG CABIN BUILDING [E] IN PLACE OF 3.7M HIGH STORAGE ROOM

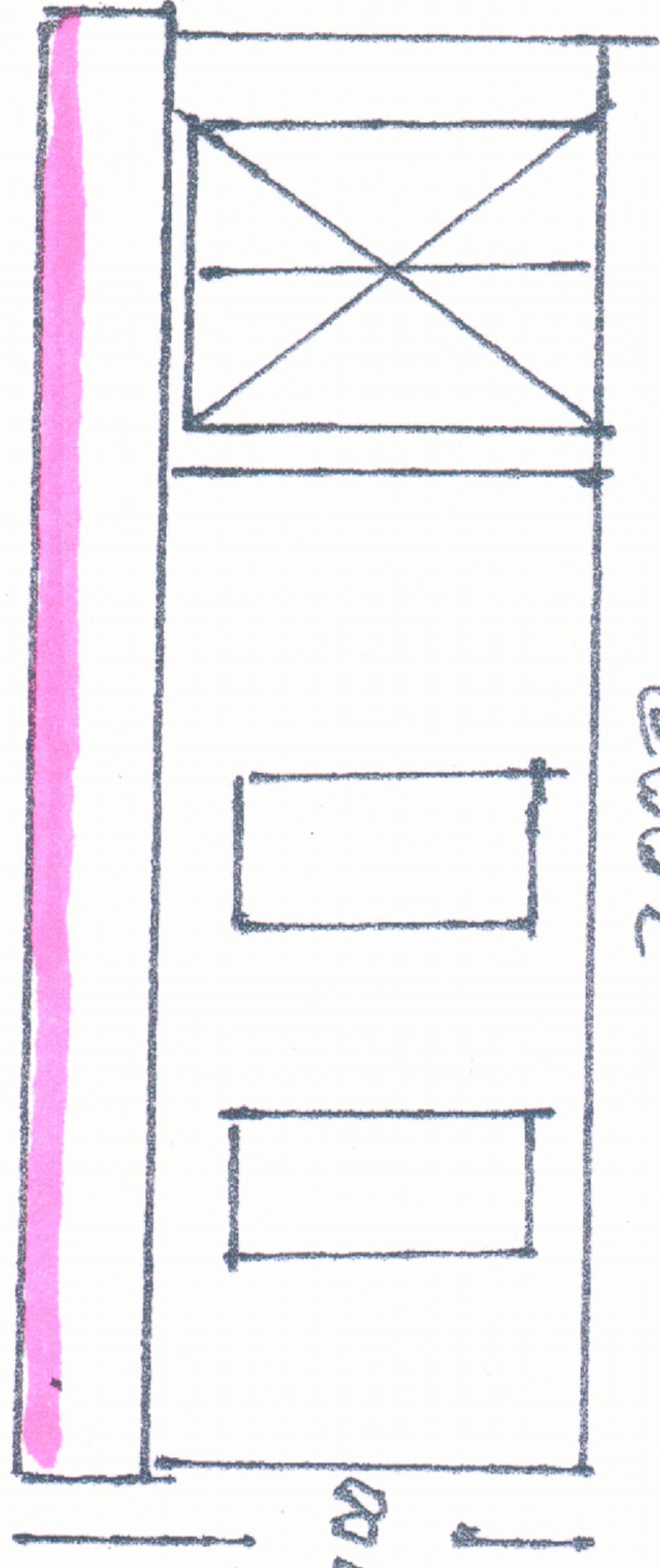


SE ELEVATION



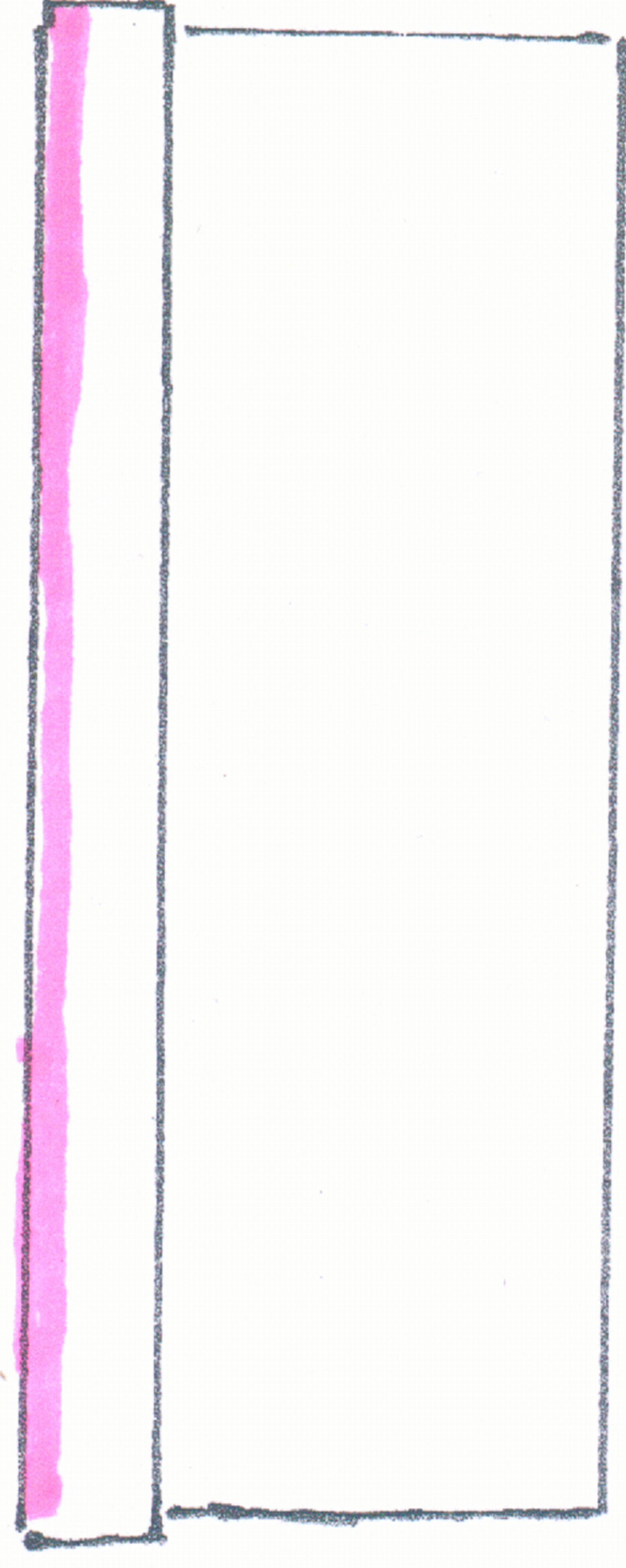
NW ELEVATION

WINDOW
BLOCKED IN



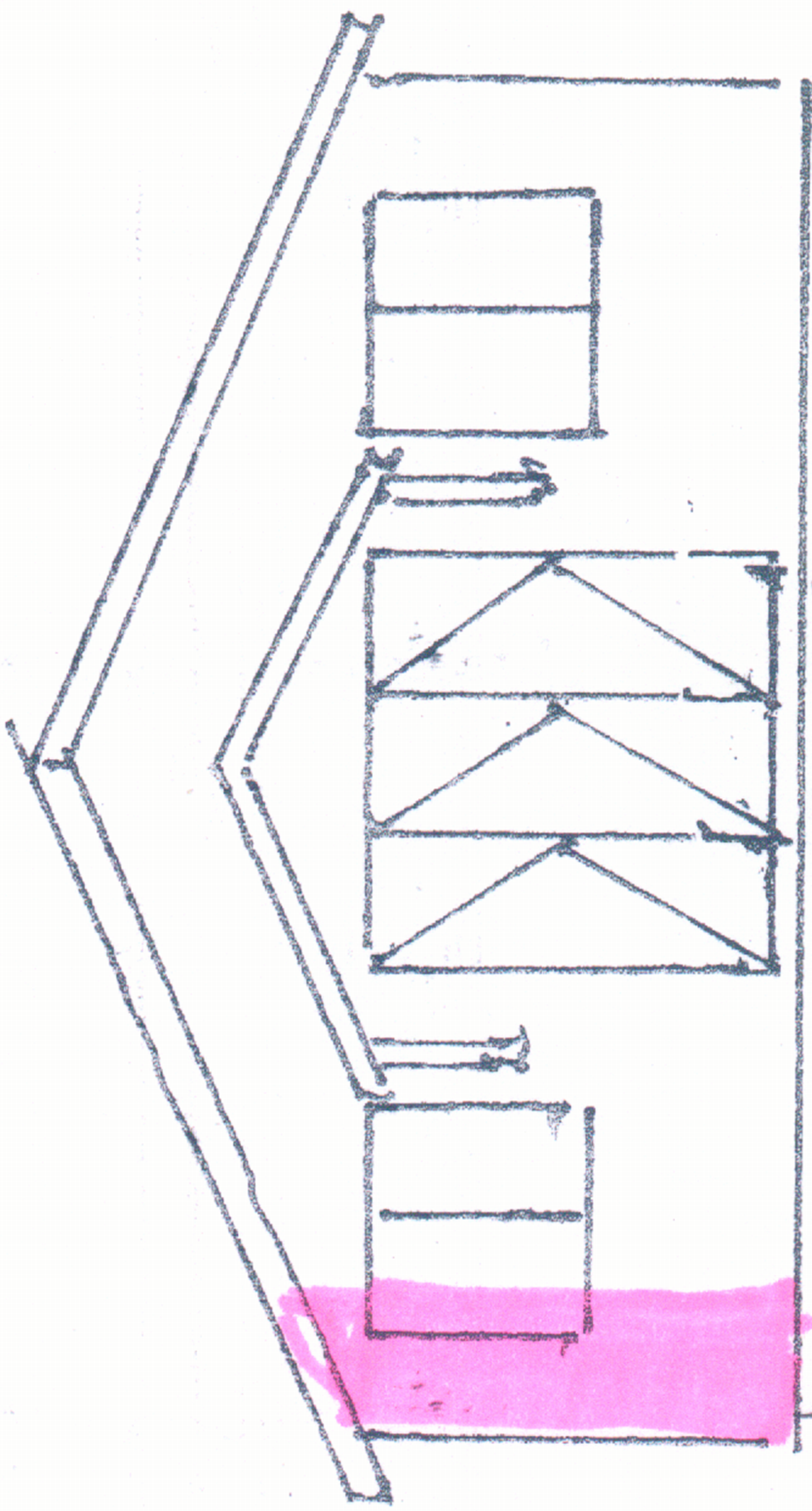
7000

SW ELEVATION



NE ELEVATION

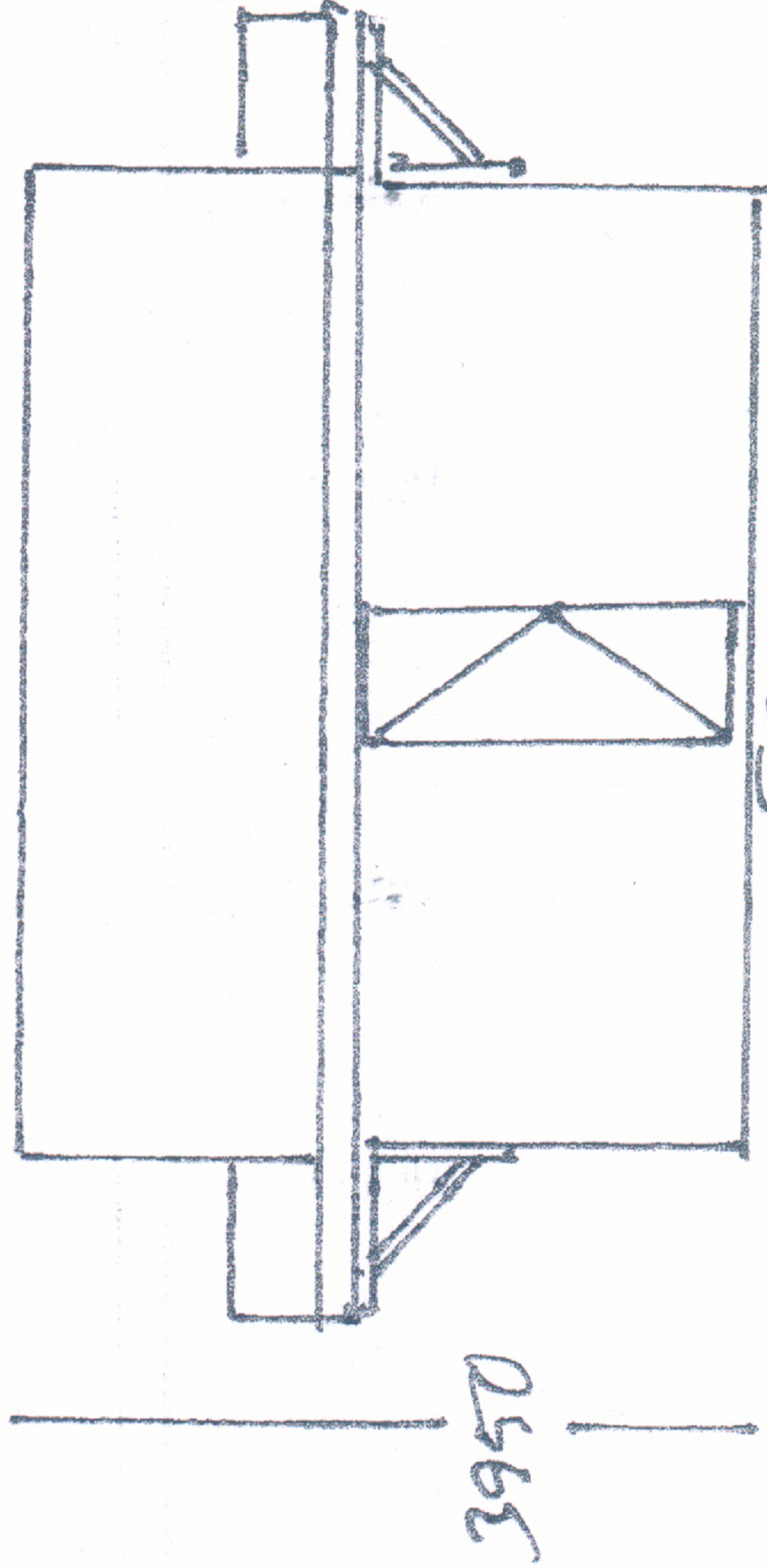
GYM BUILDING [A] ORIGINAL & PROPOSED FEATHER EDGE CLAD [NO CHANGE FROM ORIGINAL]
DOUBLE ROMAN CONCRETE INTERLOCKING RED TILES



7050

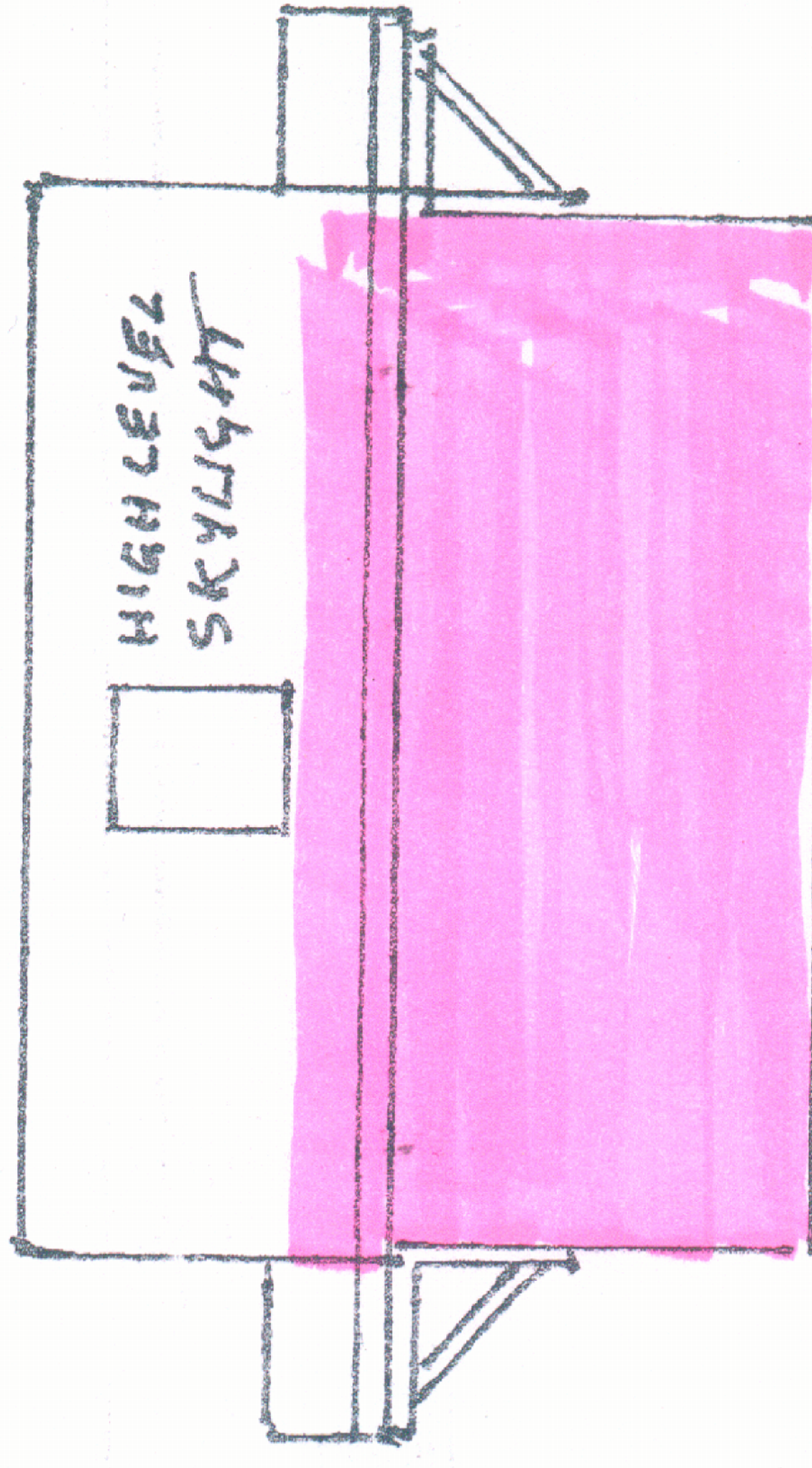
NE & SW ELEVATIONS

800mm Adjacent to boundary with 58



3950

SE ELEVATION



HIGH LEVEL
SKYLIGHT

NW ELEVATION

GYM & STORAGE ROOM / WORKSHOP

ELEVATIONS WITH REVISED HEIGHTS

JRS 005 11.3.24 SCALE 1:100



NB PINK AREAS ARE BEYOND PD RULES