

Schedule of Ground Floor Windows

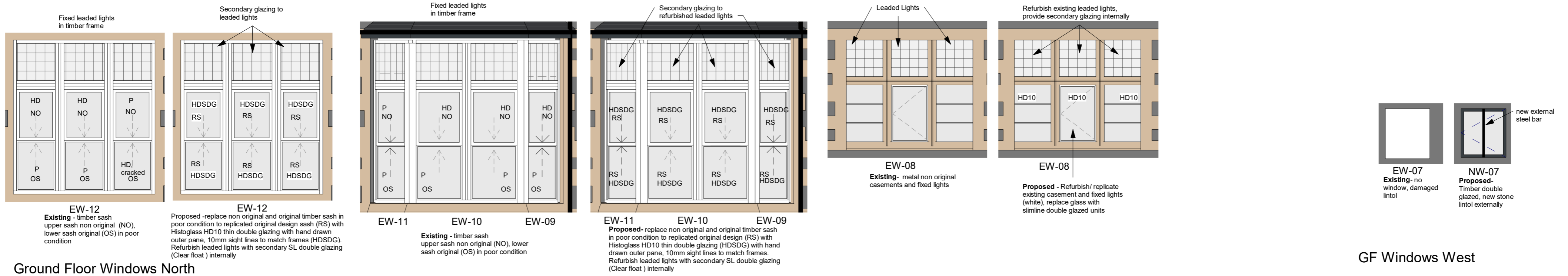
| Mark | OA Width | OA Height | Cill | Phase | Demolished | Comments | Description | Base Constraint | Age |
|-------|----------|-----------|------|------------------|------------------|--|------------------------|-----------------|----------------------|
| EW-1 | 650 | 650 | -400 | Existing | None | No Action | Type B Metal Casement | Level 00 Ground | Replaced in 2001 |
| EW-01 | 1400 | 1800 | 1100 | Existing | None | Refurbish, slimline double | Type A Timber Sash | Level 00 Ground | Replaced in 2001 |
| EW-2 | 1300 | 650 | -400 | Existing | None | No Action | Type B Metal Casement | Level 00 Ground | Replaced in 2001 |
| EW-02 | 1300 | 1800 | 1100 | Existing | None | Refurbish, leaded lights, Secondary Glazing | Type B Metal Casement | Level 00 Ground | this may be original |
| EW-03 | 650 | 1800 | 1100 | Existing | New Construction | Replace metal slimline double glazing | Type C Metal Casement | Level 00 Ground | Replaced in 2001 |
| EW-04 | 1300 | 1800 | 1100 | Existing | New Construction | Replace metal casement, leaded lights | Type C Metal Casement | Level 00 Ground | Replaced in 2001 |
| EW-05 | 1950 | 1280 | 1100 | Existing | New Construction | Replace metal casement, leaded lights | Type B Metal Casement | Level 00 Ground | part original |
| EW-06 | 600 | 600 | 1100 | Existing | New Construction | Replace metal slimline double glazing | Type C Metal Casement | Level 00 Ground | non original |
| EW-07 | 800 | 900 | 800 | Existing | New Construction | no window, Lintel to be replaced with stone externally | No Window | Level 00 Ground | no window |
| EW-08 | 2250 | 1970 | 950 | Existing | None | Refurbish leaded lights /casements - secondary glazing to leaded lights, slimline DG elsewhere | Type B Metal Casement | Level 00 Ground | this may be original |
| EW-09 | 975 | 2910 | 10 | Existing | None | Refurbish leaded lights /sash - secondary glazing to leaded lights, slimline DG where non HD glass | Type A Timber Sash | Level 00 Ground | Replaced in 2001 |
| EW-10 | 1998 | 2910 | 10 | Existing | None | Replace timber sash with opening timber doors | Type A Timber Sash | Level 00 Ground | Replaced in 2001 |
| EW-11 | 975 | 2910 | 10 | Existing | None | Refurbish leaded lights /sash - secondary glazing to leaded lights, slimline DG where non HD glass | Type A Timber Sash | Level 00 Ground | Replaced in 2001 |
| EW-12 | 2525 | 2750 | 170 | Existing | None | Refurbish leaded lights /sash - secondary glazing to leaded lights, slimline DG where non HD glass | Type A Timber Sash | Level 00 Ground | Replaced in 2001 |
| NW-03 | 650 | 1800 | 1100 | New Construction | None | New thermally broken, metal with slimline Opaque Double Glazing | Type B Metal Casement | Level 00 Ground | |
| NW-04 | 1300 | 1800 | 1100 | New Construction | None | New thermally broken, metal with slimline clear Double Glazing | Type B Metal Casement | Level 00 Ground | |
| NW-05 | 1950 | 1280 | 1100 | New Construction | None | Refurbish/ replace leaded lights / casements - secondary glazing | Type B Metal Casement | Level 00 Ground | |
| NW-06 | 780 | 600 | 1100 | New Construction | None | Type B Opaque | Type B Metal Casement | Level 00 Ground | |
| NW-07 | 800 | 879 | 821 | New Construction | None | New Timber Casement with double glazing, new bar externally | Type D Timber Casement | Level 00 Ground | |
| NW-13 | 784 | 1250 | 550 | New Construction | None | New Timber Casement with Double Glazing | Type D Timber Casement | Level 00 Ground | |

Steel Windows to be refurbished, if this is not possible replacement like for like in hot-rolled slimline sections, powdercoated to match original. If non-original glass, replace with with double glazed slimline sealed units, external glass in hand-drawn. Minimise sightlines with cavity spacer to match frame

Leaded Lights to be refurbished and provided with internal secondary glazing internally light to frames

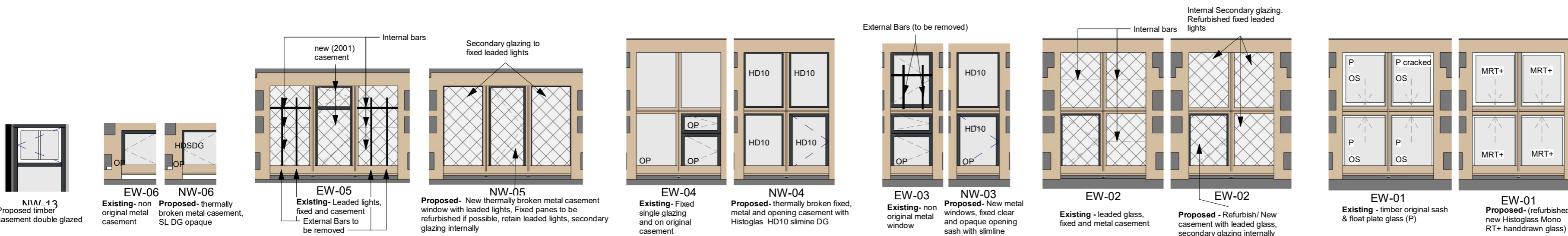
Timber sash (traditional) to be refurbished, (replicated like with like if this is not possible). Non original single glazing to be replaced with slimline double glazed units, external face hand-drawn glass. Paint finish - white to match elsewhere

Type A = Timber box sash window
 Type B = Metal window (narrow frames)
 Type C = Metal casement window
 Type D = Timber Casement
 Type E = Timber door
 OP = Opaque glass
 HD = Hand drawn glass - original?

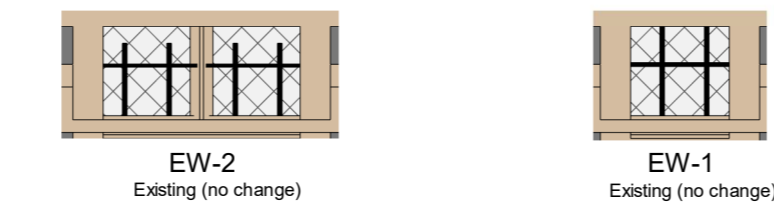


Ground Floor Windows North

GF Windows West



Ground Floor Windows South



Basement Windows

| | | | |
|-----|-----------------------------------|--------|----------|
| B | Conservation and roof notes added | CM | 12/03/24 |
| A | Window notes amended first issue | CM | 29/02/24 |
| rev | description | Author | by date |

St. Andrew, High St, Llandaff, CF5 2DX
 Matthew Skuse

Window Elevations Ground

job no. drawing no. rev status scale @ A2
 348 A(30)-01 B Information 1:50

DOWN'S MERRIFIELD architects

02921 672672 www.downsmerrifield.com

ALL WINDOWS VIEWED EXTERNALLY