

**Steel Windows** to be refurbished, if this is not possible replacement like for like in hot-rolled slimline sections, powdercoated to match original. If non-original glass, replace with with double glazed slimline sealed units, external glass in hand-drawn. Minimise sightlines with cavity spacer to match frame

**Leaded Lights** to be refurbished and provided with internal secondary glazing internally tight to frames

**Timber sash (traditional)** to be refurbished, (replicated like with like if this is not possible). Non original single glazing to be replaced with slimline double glazed units, external face hand-drawn glass. Paint finish - white to match elsewhere

**Dimensions indicative only - to be checked on site**

- Type A = Timber box sash window
- Type B = Metal window (narrow frames)
- Type C = Metal casement window
- Type D = Timber Casement
- Type E = Timber door
- OP = Opaque glass
- HD = Hand drawn glass - original?

Upper Floor Windows								
Mark	OA Width	OA Height	Cill	Phase	Comments	Description	Base Constraint	Age
EW-20	1300	1350	650	Existing	Refurbish leaded lights /casements - secondary glazing to leaded lights,	Type B Metal Casement	Level 01 First	Casements replaced in 2001
EW-21	1875	1350	650	Existing	Refurbish leaded lights /casements - secondary glazing to leaded lights,	Type B Metal Casement	Level 01 First	Casements replaced in 2001
EW-22	1875	1350	650	Existing	Refurbish leaded lights /casements - secondary glazing to leaded lights,	Type B Metal Casement	Level 01 First	Casements replaced in 2001
EW-23	1600	1900	750	Existing	Refurbish, slimline double	Type A Timber Sash	Level 01 First	this may be original
EW-24	1300	3000	-1045	Existing	Refurbish leaded lights /casements - secondary glazing to leaded lights,	Type B Metal Casement	Level 01 First	this may be original
EW-25	1600	1900	750	Existing	Refurbish, slimline double	Type A Timber Sash	Level 01 First	this may be original
EW-30	1209	960	1603	Existing	Refurbish leaded lights /casements - secondary glazing to leaded lights,	Type B Metal Casement	Eaves	this may be original

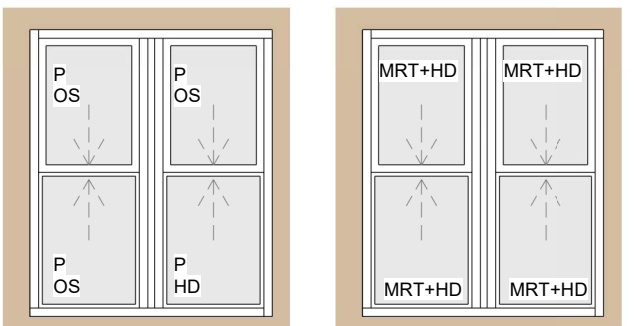


**EW-30**  
Existing - metal windows in timber subframe, leaded glass

**EW-30**  
Proposed - refurbish window and leaded lights, replace casement, providing internal secondary glazing to face of window reveal

East Windows Second

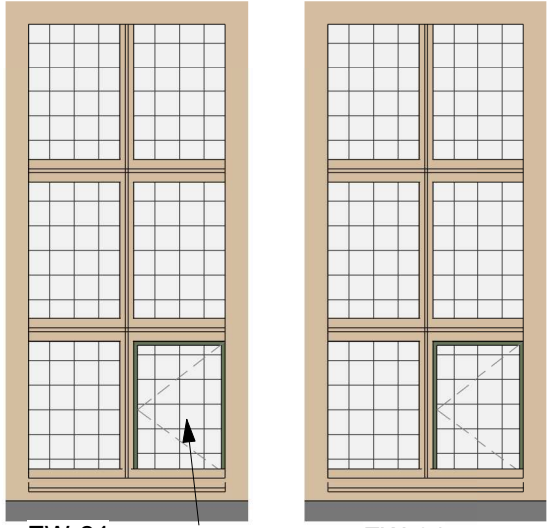
VIEWED EXTERNALLY



**EW-25**  
Existing - original sashes OS 1 pane is hand drawn (HD)

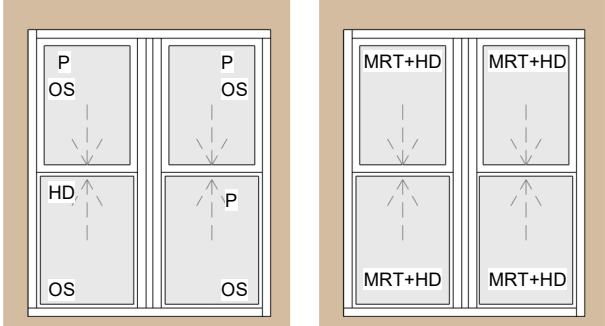
**EW-25**  
Proposed - Refurbish sash window replacing glass with Histogram Mono RT+ Handdrawn 4mm glazing

First Floor Windows South



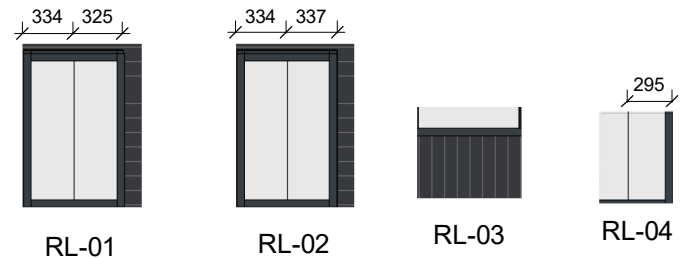
**EW-24**  
Existing 2001 Casement

**EW-24**  
Proposed - refurbish window, provide secondary glazing to entire window

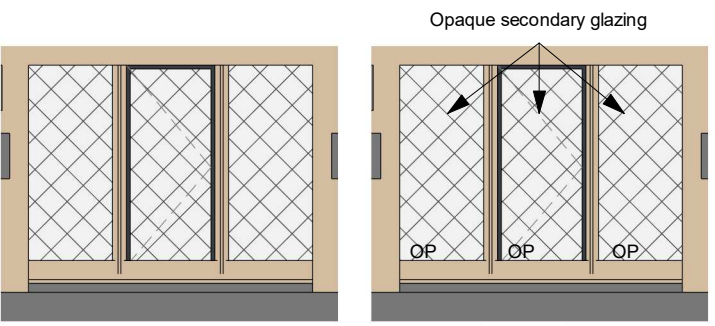


**EW-23**  
Existing - Original sashes OS 1 pane hand drawn (HD)

**EW-23**  
Proposed - Refurbish sash window replacing glass with Histogram Mono RT+ Handdrawn 4mm glazing



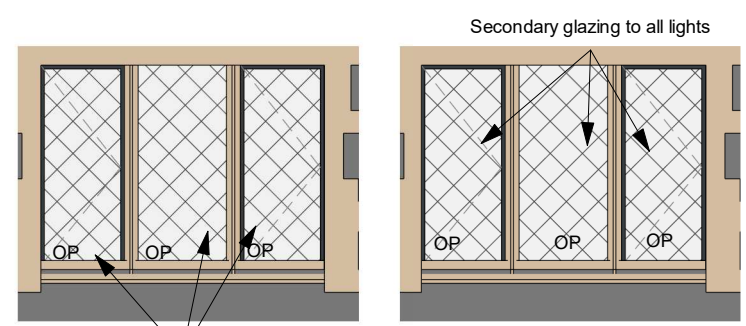
Roof Lights



**EW-22**  
Existing - leaded lights and original sash

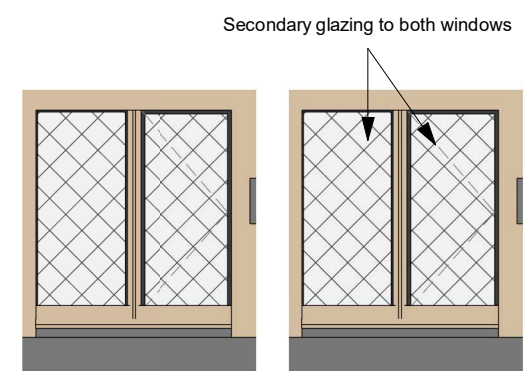
**EW-22**  
Proposed - refurbish window, retain glass replacing any cracked small panes

First Floor Windows North



**EW-21**  
Existing - May be original glass, planning permission to update casements in 2001 casements recent?

**EW-21**  
Proposed - refurbish/ replace casements, retain glass replacing any cracked small panes in matching glass



**EW-20**  
Existing - leaded lights and original sash

**EW-20**  
Proposed - refurbish window, retain glass replacing any cracked small panes

rev	description	CM	by	date
B	Conservation and roof notes added	CM		12/03/24
A	Window notes amended first issue	CM	Author	29/02/24

St. Andrew, High St, Llandaff, CF5 2DX  
Matthew Skuse

Window Elevations Upper Floors

job no.	drawing no.	rev	status	scale @
348	A(30)-02	B	Information	1:50