

Floors - U-Values (M&E Assumed - 0.43 W/m<sup>2</sup>K)

Ty-Mawr Limecrete floor (200mm Glapour RFG) - 0.41 W/m<sup>2</sup>K  
Existing timber floor (235mm Sheep Wool Insulation) - 0.165 W/m<sup>2</sup>K

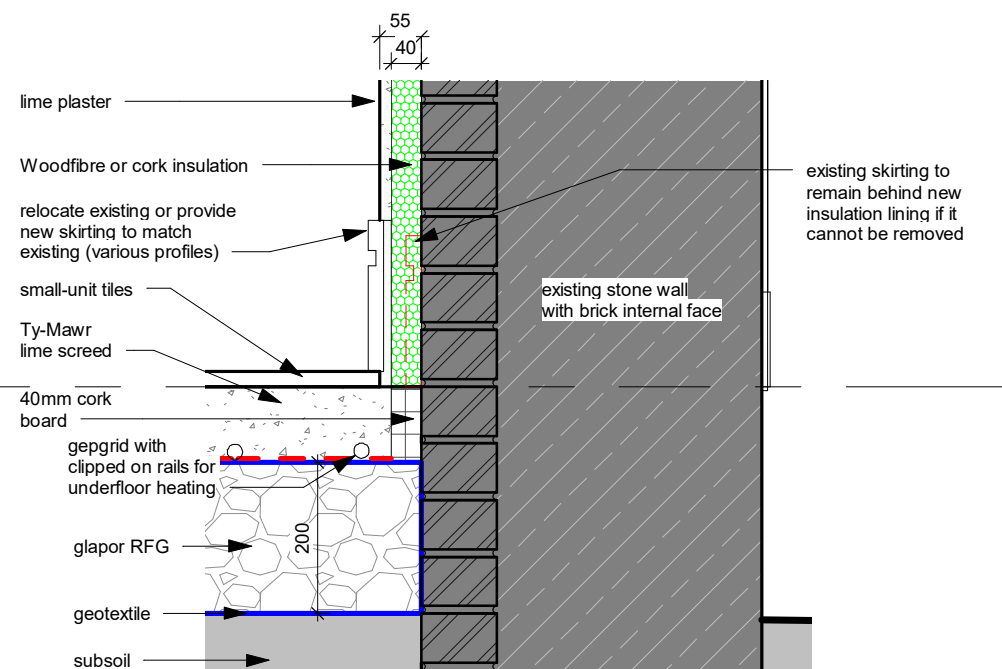
Suspended upper floors (235mm Thermaflece) - 0.165 W/m<sup>2</sup>K

Walls - U-Values (M&E Assumed - 1.54 W/m<sup>2</sup>K)

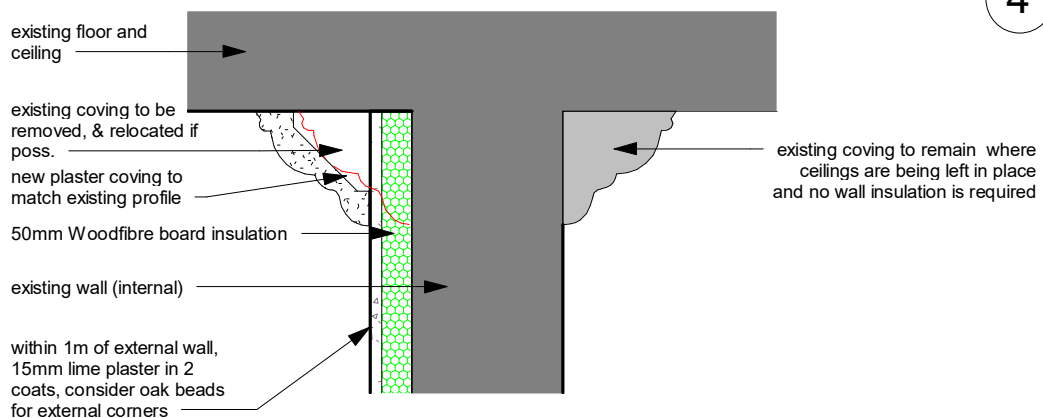
Ty-Mawr wall insulation (40mm Woodfibre) - 0.65 W/m<sup>2</sup>K  
Schneider GmbH 40mmx580x1250mm with Schneider GmbH 20mm for reveals

or Ty Mawr Ecocork 20 or 40mm 1.1W/m<sup>2</sup>K

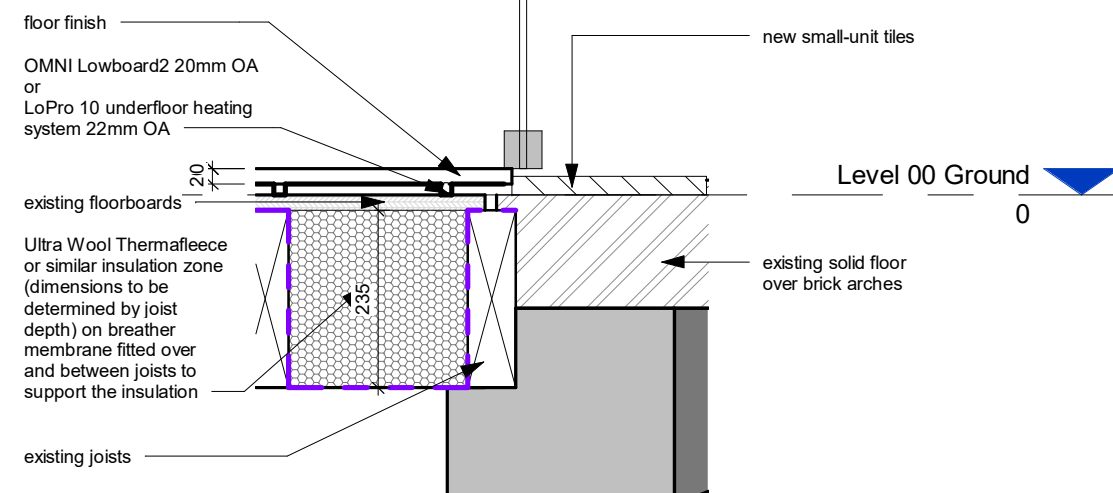
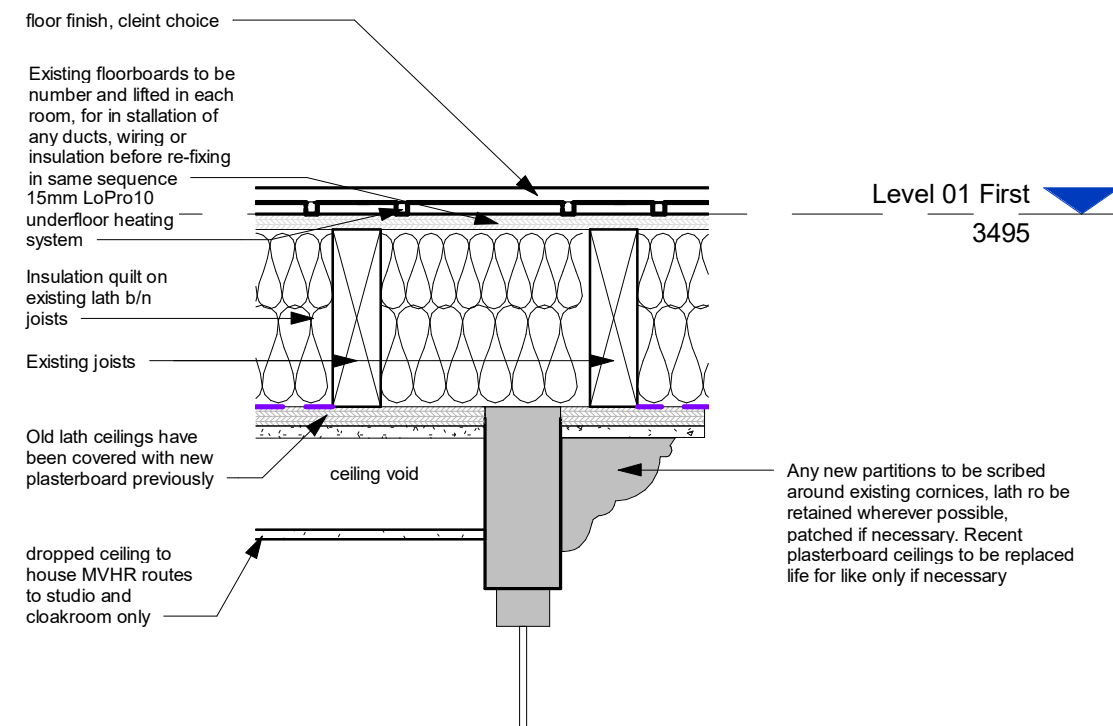
### 1 Kitchen Floor 1 : 10



### 5 Detail - Limecrete floor-wall 1 : 10



### 2 Detail - Coving 1 : 10



### 4 Detail - UFH and Crittal screen 1 : 10

B	Notes updated	CM	18/03/24
A	U values and insulation/construction n updated	CM	07/02/24
	first issue	Author	-
rev	description	by	date

St. Andrew, High St, Llandaff, CF5 2DX  
Matthew Skuse

### Details- Floor, walls

job no. drawing no. rev status scale @ A3  
348 A(20)-01 B Information 1 : 10

DOWNSMERRIFIELD architects

02921 672672 www.downsmerrifield.com