

# EXTERNAL MATERIALS

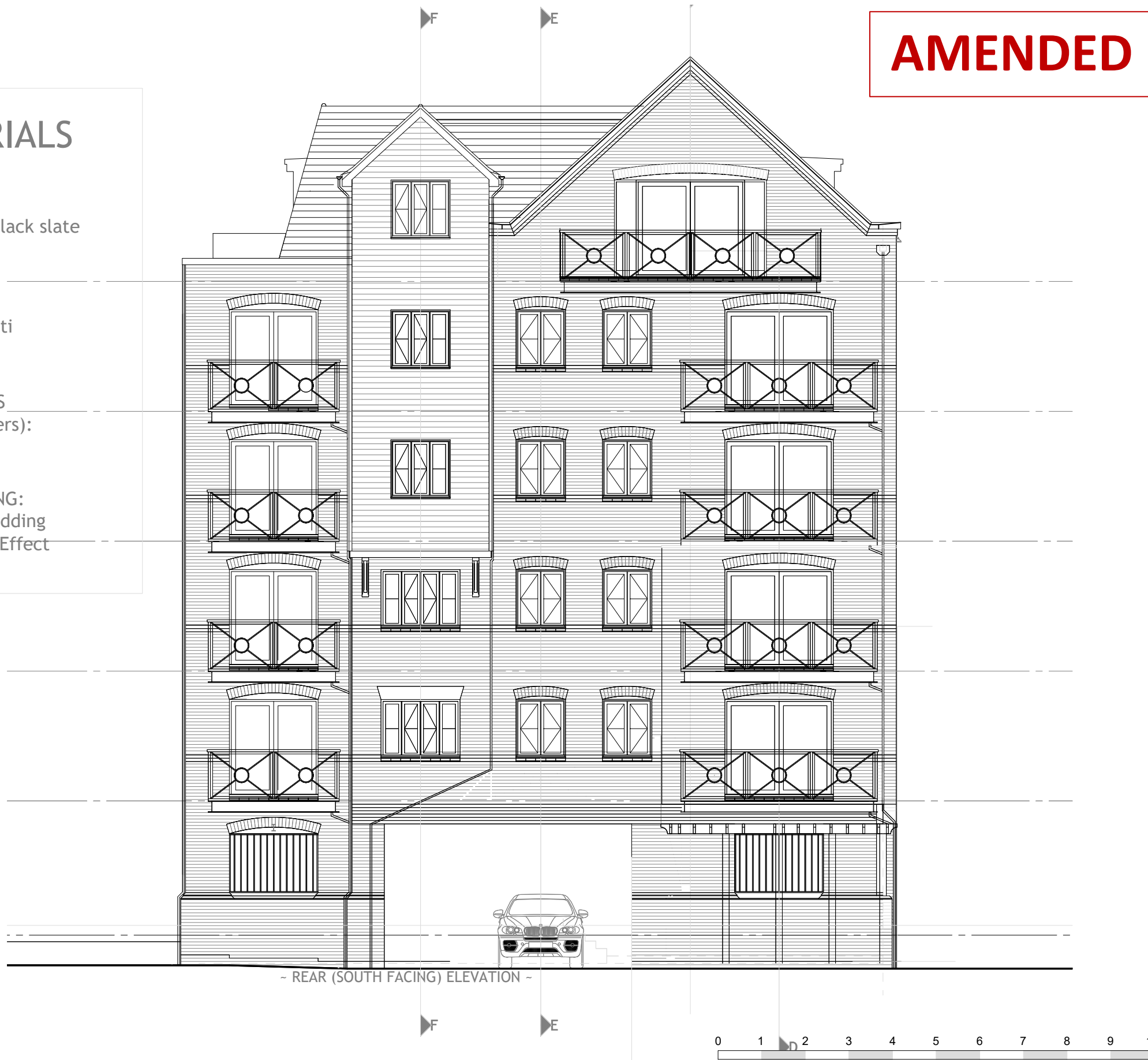
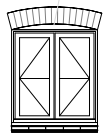
**ROOF TILES:**  
Cembrit 'Zealand' blue/black slate

**MAIN BRICKS:**  
Kent Yellow Multi

**FEATURE BRICKS  
(banding and soldiers):**  
Tornado Stock

**WEATHERBOARDING:**  
Non Combustible Cladding  
Dark Stained Timber Effect

Arch Former over window  
& door openings to match  
in colour & material to  
power coated aluminium  
windows



**AMENDED**

revisions

A - Schedule of Materials

**GB&P**  
**Geoff Beardsley & Partners (UK) LLP**  
 CHARTERED ARCHITECTS AND CDM CO-ORDINATORS  
 Elin House, 1A Elin Grove, Teddington, Middlesex TW11 8RD  
 Tel: 020 86144374 Fax: 020 89778494  
 www.gbarchitects.co.uk

client

MJV Design

job

34-C Gabriel's Hill  
 Maidstone  
 ME15 6JJ

title

APPROVED DRAWING. REF:  
 21/502579/FULL  
 PROPOSED REAR ELEVATION  
 (SOUTH)

dwg no.

2011/ 210A

scale 1:50 @ A1 date SEP 2020  
 1:100 @ A3