



M-Tray Installed



M-Tray



M-Tray® Installation guide

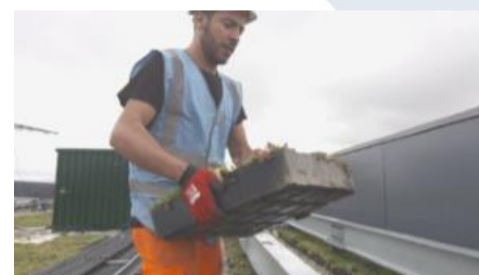
This is your step-by-step guide to unpacking, assembling and installing your Wallbarn product



1 Delivery
The M-Trays® are delivered on pallets to the kerbside. It is the buyer's responsibility to move the pallets from the kerb to the roof/podium.



2 Unpack immediately
Unpack the M-Trays® from the pallets immediately upon delivery to prevent the sedum plants being crushed. If left stacked for more than 24hrs sedum will start to decompose and die.



3 Handballing trays
The trays can be easily transported by hand to where they are being laid.



4 Prepare your roof
Ensure the roof membrane is properly protected and free from dirt and debris. Roll out the supplied geotextile fabric, ensuring an overlap of 20cm. This will act as a protective layer and a filter for drainage.



5 Install metal edging
Once the geotextile is laid, install your aluminium edging (optional). This is placed around the perimeter and loose laid into position. Do not mechanically fix the edging into the waterproofing membrane.



6 Start placing the trays
The trays are laid over the geotextile fabric and clicked together. They fit over the base of the edging bar.

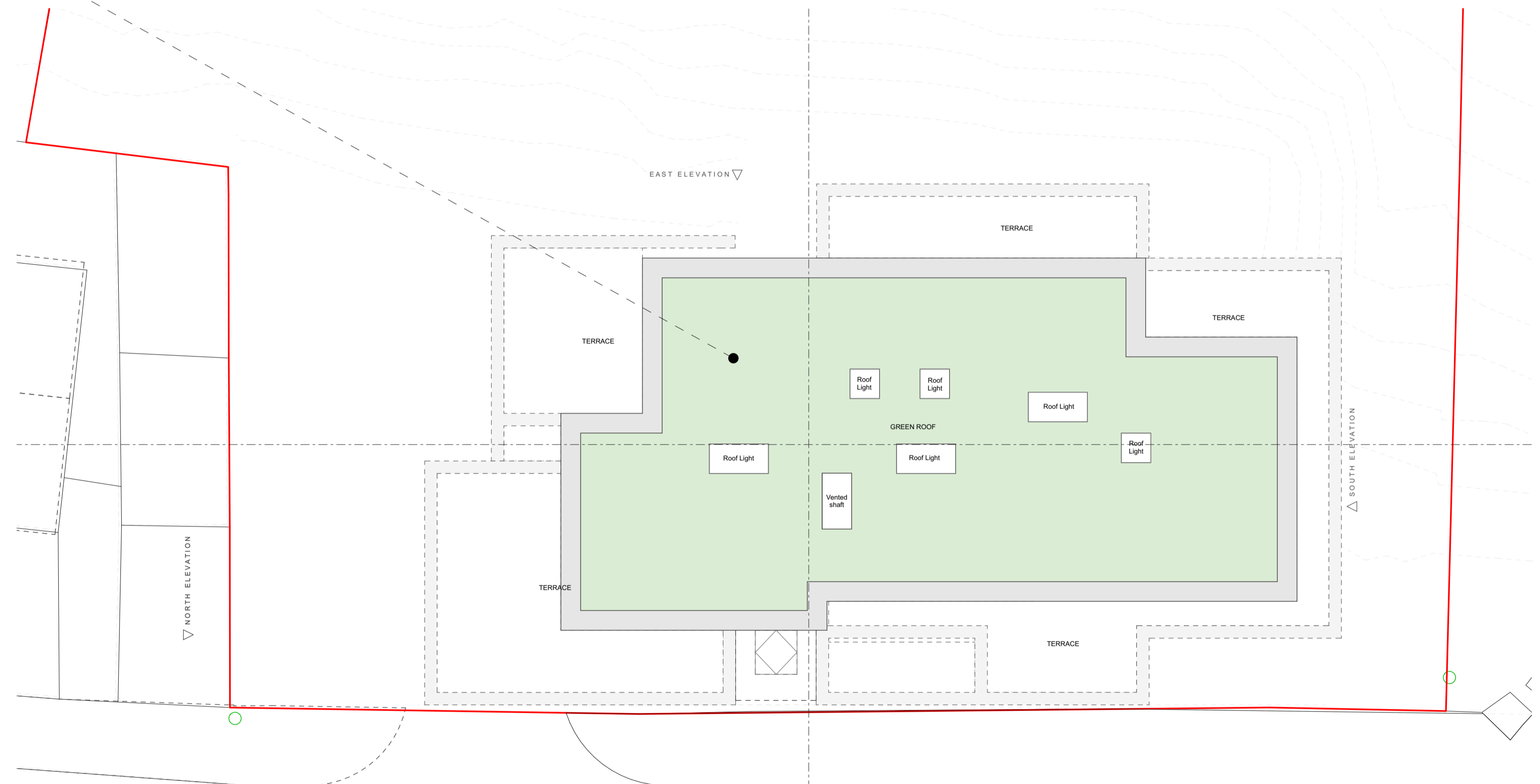


7 Tray orientation
Each module has 2 x clips on the North side and the East side; and 2 x recesses on the South side and the West side.



8 Lay irrigation piping
If an irrigation system has been purchased, install as you lay the modules (see irrigation guide) by laying the pipes in between each tray at the base.

Wallbarn-M-Tray-Installation-guide



NORTH MILITARY ROAD

