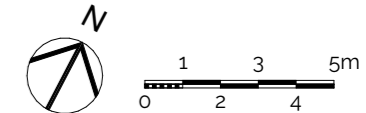


© Copyright: Mattinson Associates Ltd. 2024
 No reproduction, transmission or correspondence to third parties of all or any part of this document or the information it contains is permitted without the prior written consent of Mattinson Associates Ltd. This drawing is not to be scaled for the purpose of setting out. Any discrepancies found in this drawing, or between this drawing and another must be reported to Mattinson Associates Ltd. immediately.

Generic Notes:



Rev	Reason	Date	By

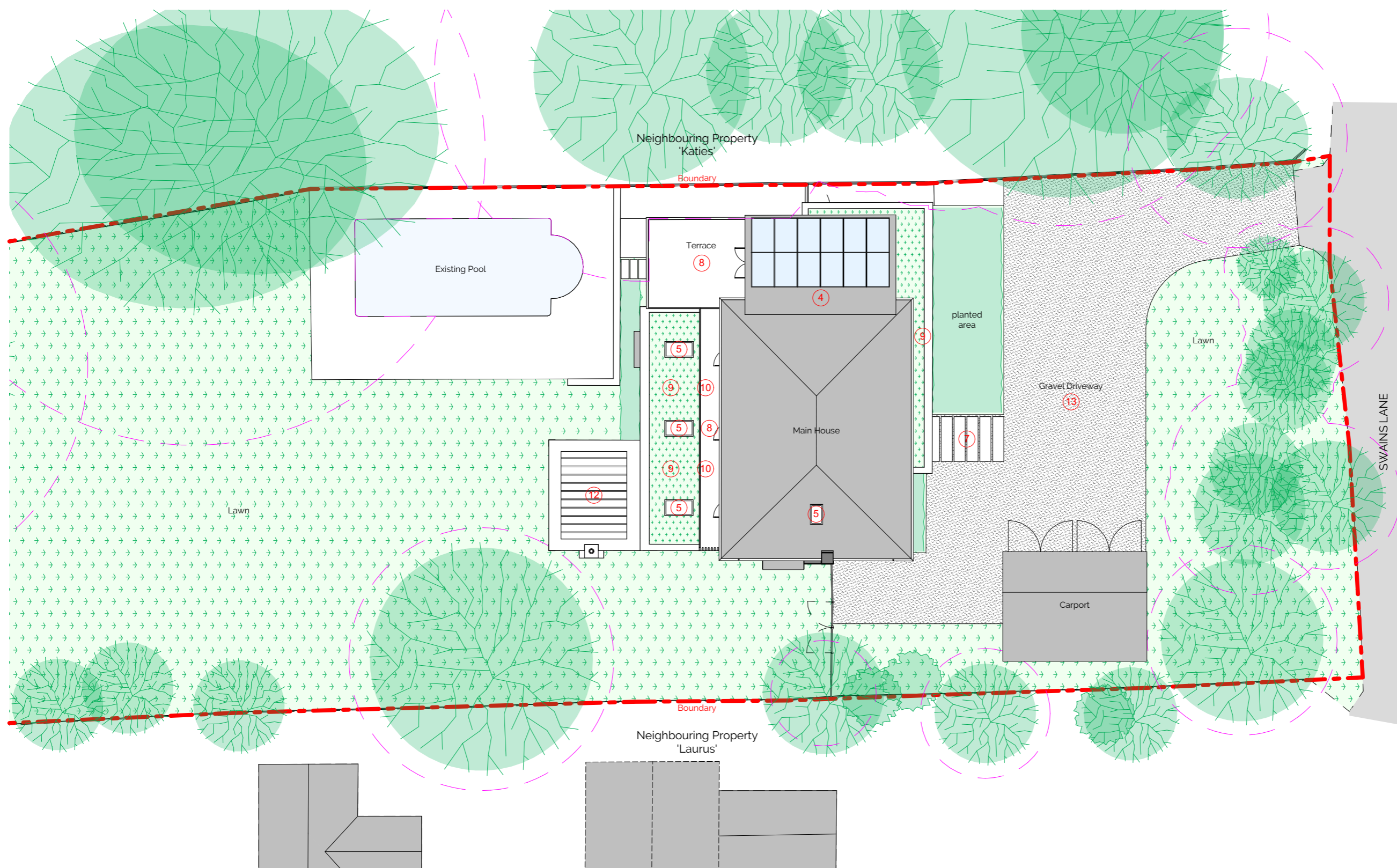
PLANNING

**Mattinson
associates.**

The Studio @ The Old Granary
 Ford Farm, Ford Farm Lane
 Whitwell, Ventnor
 Isle of Wight, PO38 2NZ
 Tel +44(0)1983 840953
 Mob +44 (0)7867533776

enquiries@mattinsonassociates.com
 www.mattinsonassociates.com

Client Ms Henrietta Southby	
Project. Wight Haven	Project No. 3352
Scale. 1:200 @ A3	Date. 11/07/2022
Drawing Name Prp Site Plan	
Drawing Number 3352(P)0110_	



Proposed Part Site Plan 1:200

Root Protection Area

- Notes**
- Materials:**
- Existing External Walls** - Light stone coloured mineral paint on existing brickwork.
 - External Wall Timber Cladding** - Light coloured vertical timber cladding to turn silver eventually.
 - Windows and Doors** - Double glazed system with white colour frame to match existing.
 - Flat Roof** - Alwitra anthracite grey rubber roof membrane.
 - Rooflights** - Double glazed rooflight frame colour to be drak grey RAL 7016 matt.
Lounge, Relaxed Dining, Play Zone (3no) - 780mm x 1400mm rooflight
Ensuite (1no) - 600mm x 1200mm rooflight
 - Paving** - Light coloured stone paving.
 - Decking** - Millboard composite decking.
 - Green Roof** - Self sustaining grass green roof system.
 - Railings** - Frameless glass balustrade with concealed fixings at base.
 - Roof Fascia** - Aluminium clad roof fascia powder coated grey RAL 7035 matt.
 - Timber Fins/Pergola** - Treated timber to match timber cladding.
 - Gravel Driveway** - Natural toned shingles.
 - Garage Wall** - Horizontal timber cladding on timber frame.
 - Garage Roof** - Timber shingles pitched roof.

