



DRAINAGE STATEMENT

28 Dukes Avenue, New Malden, KT3 4HN

GAMUT BUILDING SOLUTIONS

21 Ford Close, London, E3 5LZ

info@gamutbs.co.uk

Introduction

This statement has been prepared to support the planning application submitted. This statement is to establish the principles of a future drainage scheme in line with the drainage hierarchy.

Surface Water Drainage

Risk from rivers or the sea: The site is located within Flood Zone 1 as shown in the map below. The site also has a very low potential for any flooding from rivers and sea as indicated. Similarly, flooding risk from surface water is very low.

The site is believed to have good infiltration rates and has certainly not flooded in recent history or living memory. On this basis surface water will be disposed via existing separate surface water drainage.

Foul Water Drainage

The existing site is currently connected to foul water drainage and this will remain unchanged. All new foul water drainage will be connected to the existing manholes.

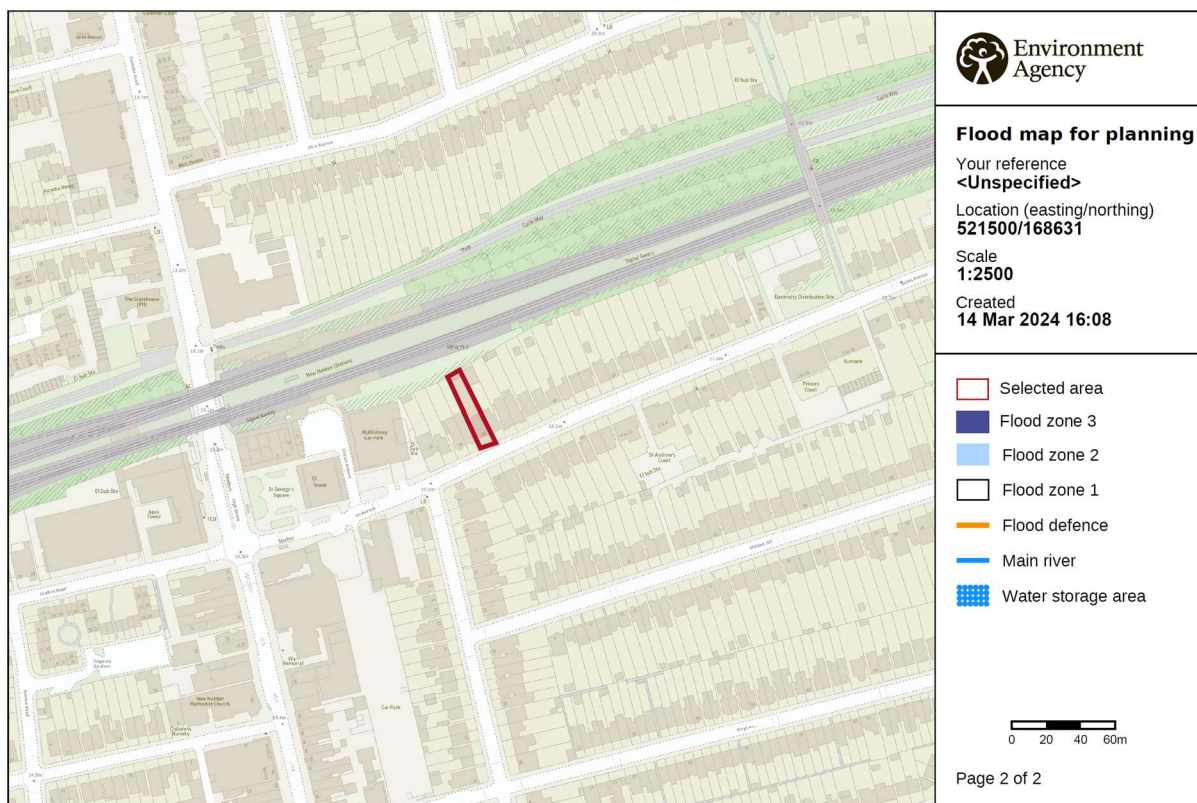


Figure 1 - Flooding Map