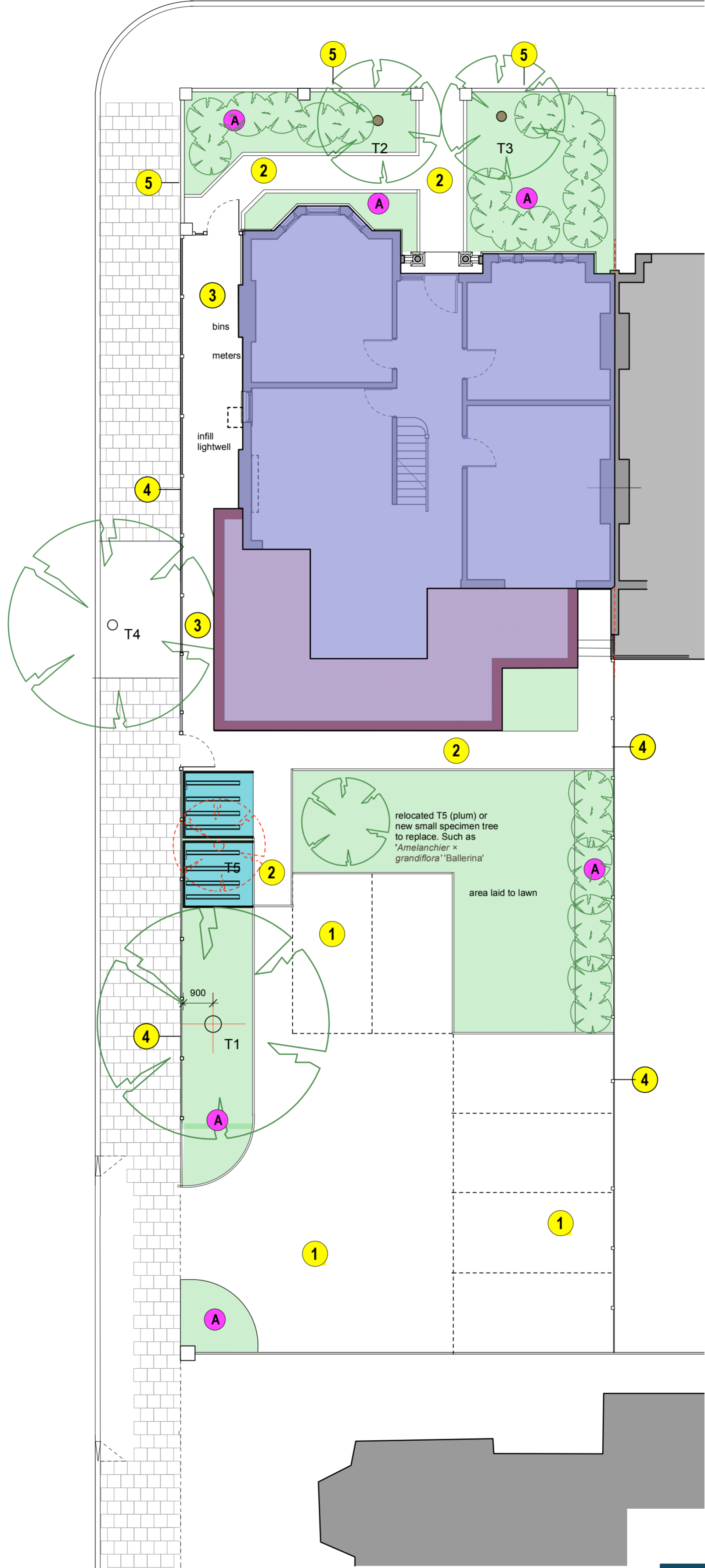




MANOR ROAD

BEVENGTON ROAD



A SOFT LANDSCAPING

NEW LOW LEVEL BORDER PLANTING

Small shrubs & plants (0.15 - 0.9m) to give year long colour & interest. Suitable for partial shade & sun. To be planted max. 0.45m centres in clusters of 3-5 (depending on plant type) interspersed with single feature plants (e.g Yucca, Yew, Phornium).

No plants above 0.6m height to be within pedestrian visibility areas at car park entrance
Planting to comprise:

- Pachysandra terminalis 'Variegata' (low level carpeting plant)
- Ajuga reptans (Bugle)
- Yucca Filamentosa (adams needle)
- Lavendula Angustifolia (English Lavender)
- Geranium Johnsons Blue (Cranesbill)
- Rosmarinus Officinalis (rosemary)
- Hebe 'Red Edge', 'Blue Clouds', 'Pascal', 'Vericosa'
- Hosta Halcyon
- Hosta Hybrid 'Francee'

KEY - HARD LANDSCAPING

Proposed finish to parking area.
Gravel on heavy duty plastic grid by IBRAN or similar. SUDs compliant (free draining) and made for all **part M compliant (wheelchair accessible)** domestic and commercial parking, driveways and footpaths. 50mm concrete edging strip to flush landscaping edges. Stainless steel car parking markers suited to parking grid system to demark parking spaces

1



450x450x50 Marshalls Saxon 'natural' paving slabs on 50mm sand on 150 well consolidated hard core. 50mm concrete edging strip to flush landscaping edges. paving walkways and terraces to be laid to fall to drain naturally into landscaped areas.

2



Permeable paving -SUDs drainage. 100 x 200 x 60 Formpave Aquaflow paving blocks (red brindle) laid on 50mm layer of crushed stone (5mm stone) on Inbitex membrane on Sub base (OGCR) depth to suit ground conditions comprising 20mm open graded clean crushed stone (allow for capping layer if ground drainage conditions poor with CBR below 5%) 50mm concrete edging strip to flush landscaping edges.

3



GARDEN FENCE:
Featherboard fencing panels by Jackson or equivalent. 1.8m high. Timber 1.8m high gates as shown

4



EXISTING BRICK WALL WITH RAILINGS
Retain existing boundary wall. Repair as necessary. Replace/add black railings to match as required.

5



jmartin architects	Project 20 MANOR ROAD, BECKENHAM BR3 5JB		
	Drawing PROPOSED LANDSCAPING LAYOUT		
	Scale 1:100 @A2	Date FEB 2024	Dwg No. 2081 - PC 02
The Manor Farm, 124 Manor Road North, Thames Ditton, KT7 0BH Tel :0208 191 8612 email : jmartinarchitects@btconnect.com			