

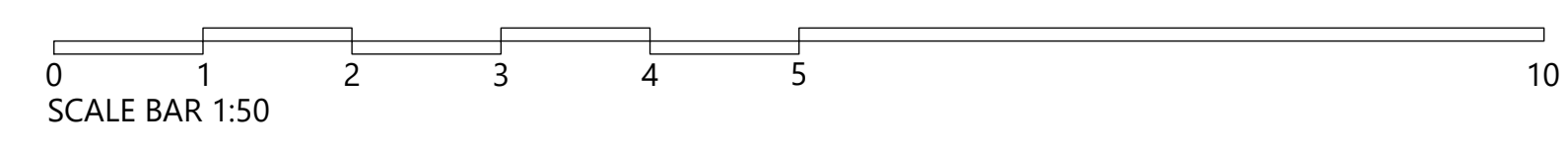
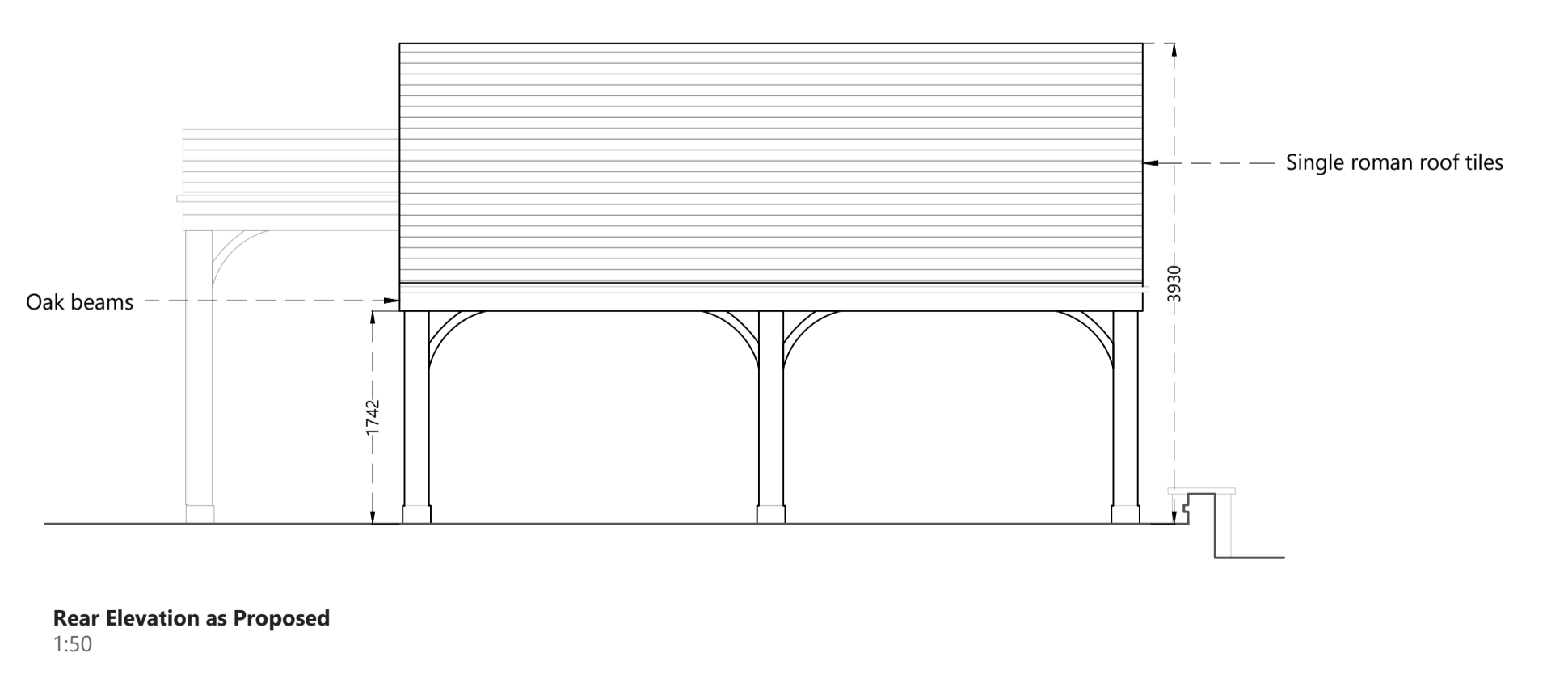
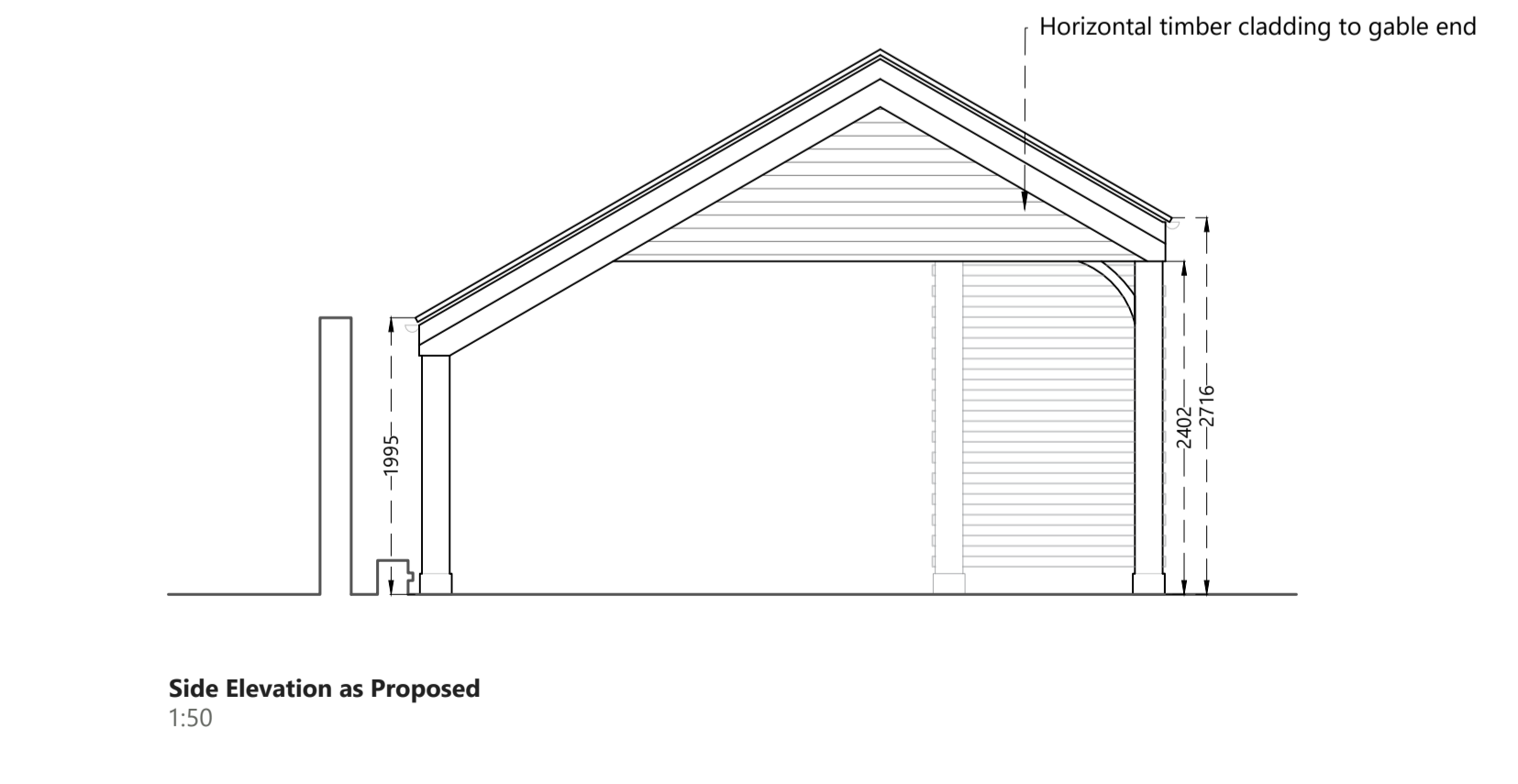
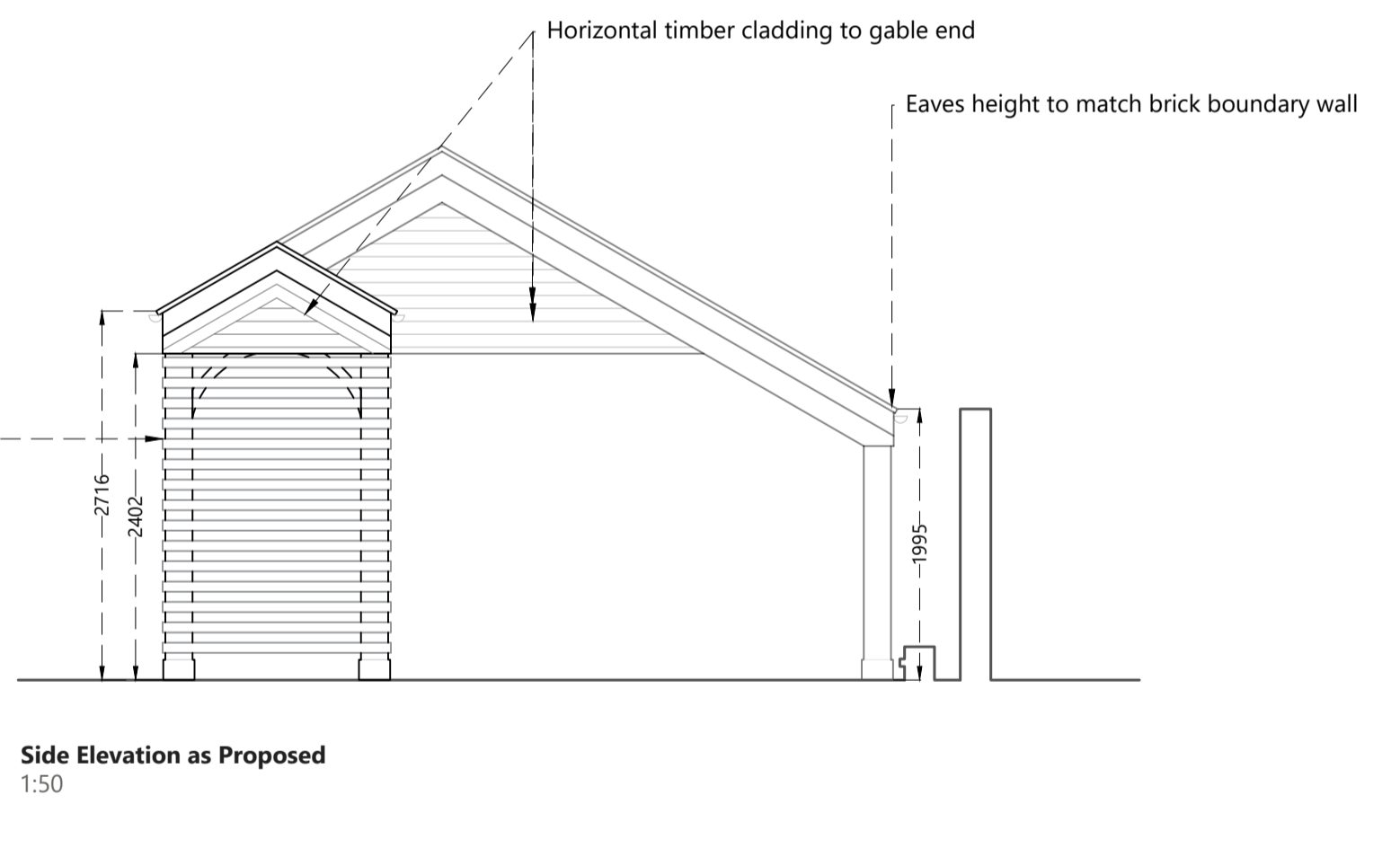
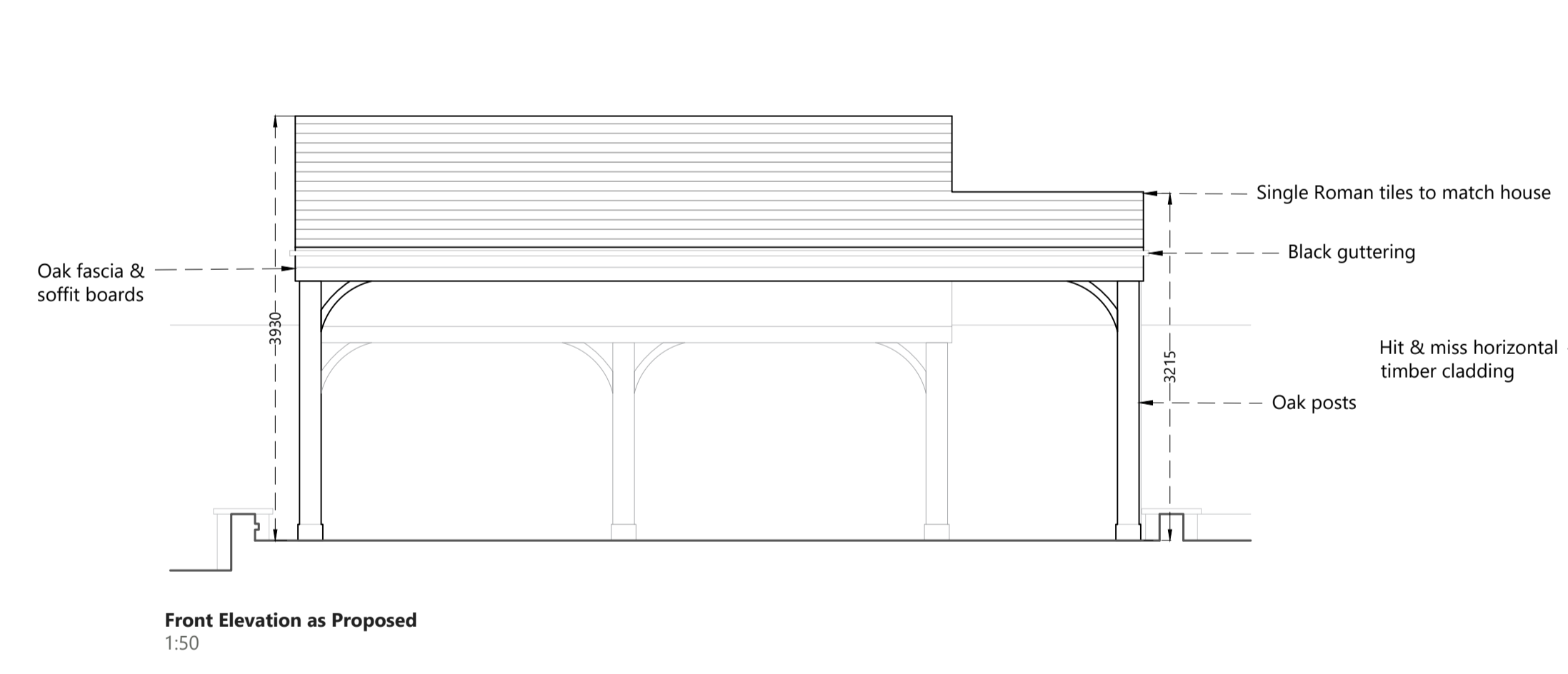
Single Roman tiles to pitched roof



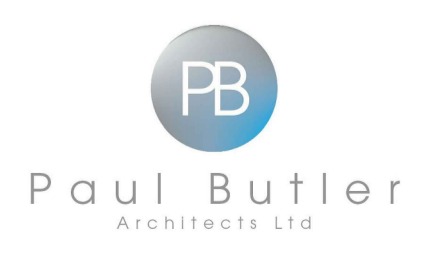
Timber cladding to gable end



Hit & miss horizontal timber cladding



NO	DESCRIPTION	DATE	BY	CHECKED
731	Plans as Proposed	Feb 2024	Porter	Butler
			731	001-PL
				A



Unit 1 Westfield House Millfield Lane Nether Poppleton York YO26 6GA  
 T: 01904 750244 E: paul@pb-architects.co.uk www.pb-architects.co.uk

