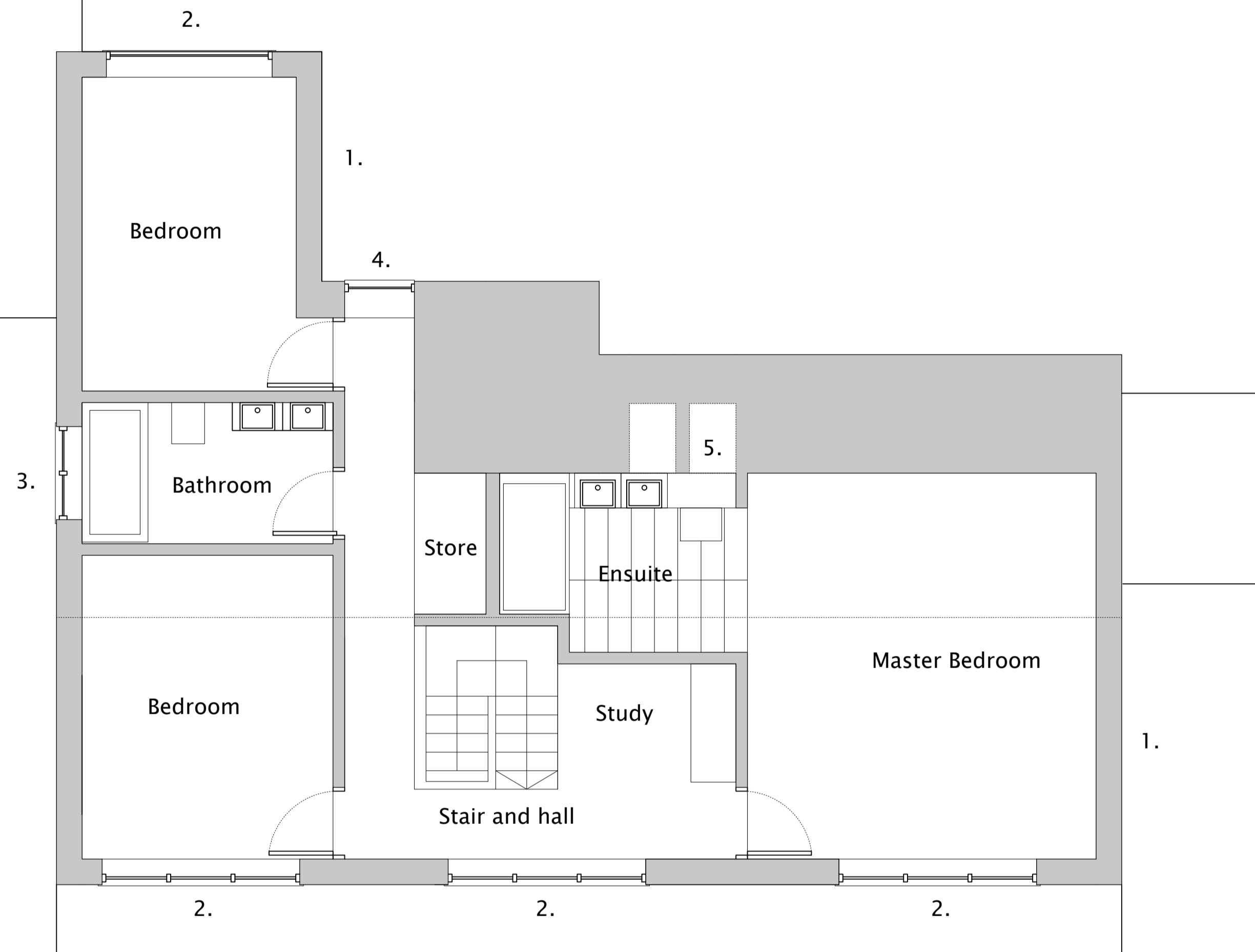


AA

Legend:

- 1. New vertical tiled facades.
- 2. New opening and fixed grey aluminium framed windows with glass guarding.
- 3. Frosted window to bathroom.
- 4. Full height fixed window.
- 5. Velux roof lights.



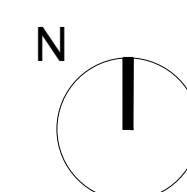
Nick Willson Architects

Second Home
68 Hanbury Street
London
E1 5JL
www.nickwillsonarchitects.com

Notes:

All dimensions to be confirmed by contractor on site.
Do not scale from drawings.

Scale 1:50



Rev	Date	Description	By	Ck

Project 10 Coombe Hill Road, Rickmansworth, Herts	Project description Loft conversion	Scale 1:50@A1	Job No 0777
Title Proposed Loft Floor Plan	Stage Planning	Drawing No A201	Rev -