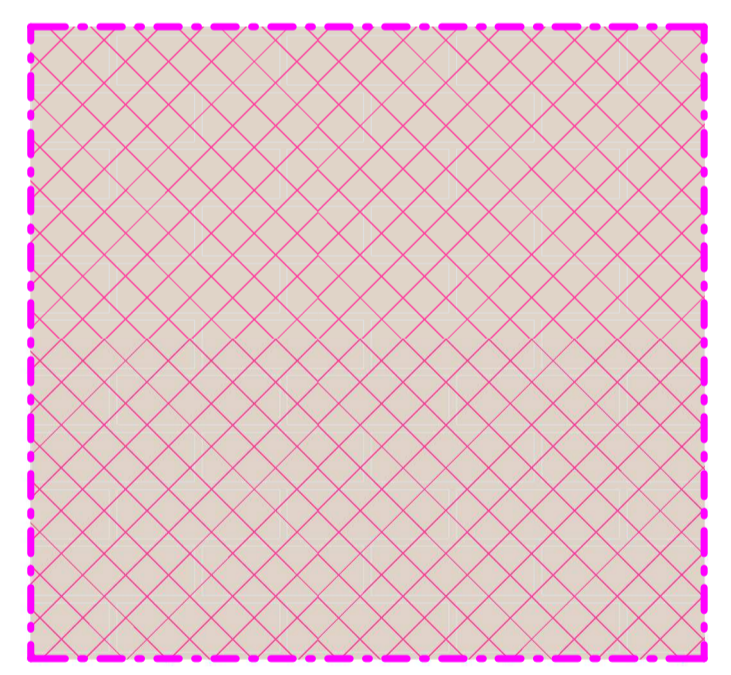
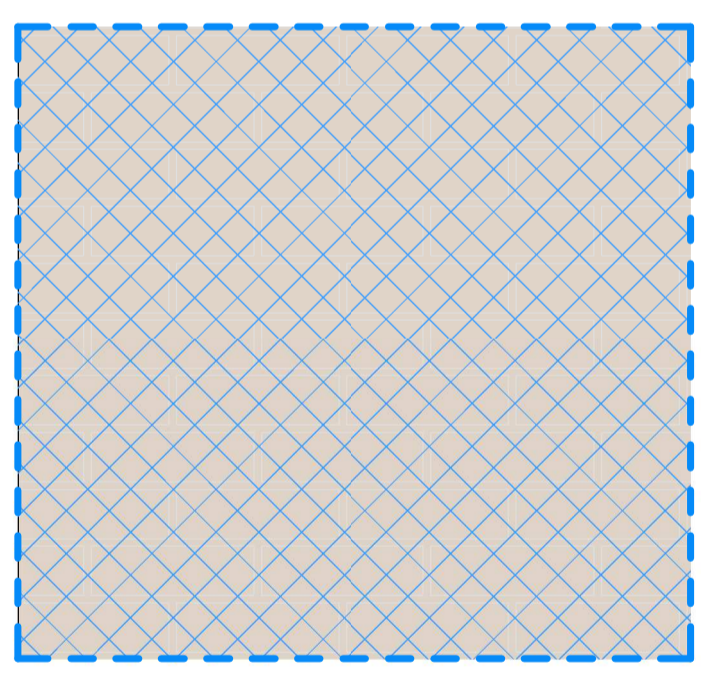
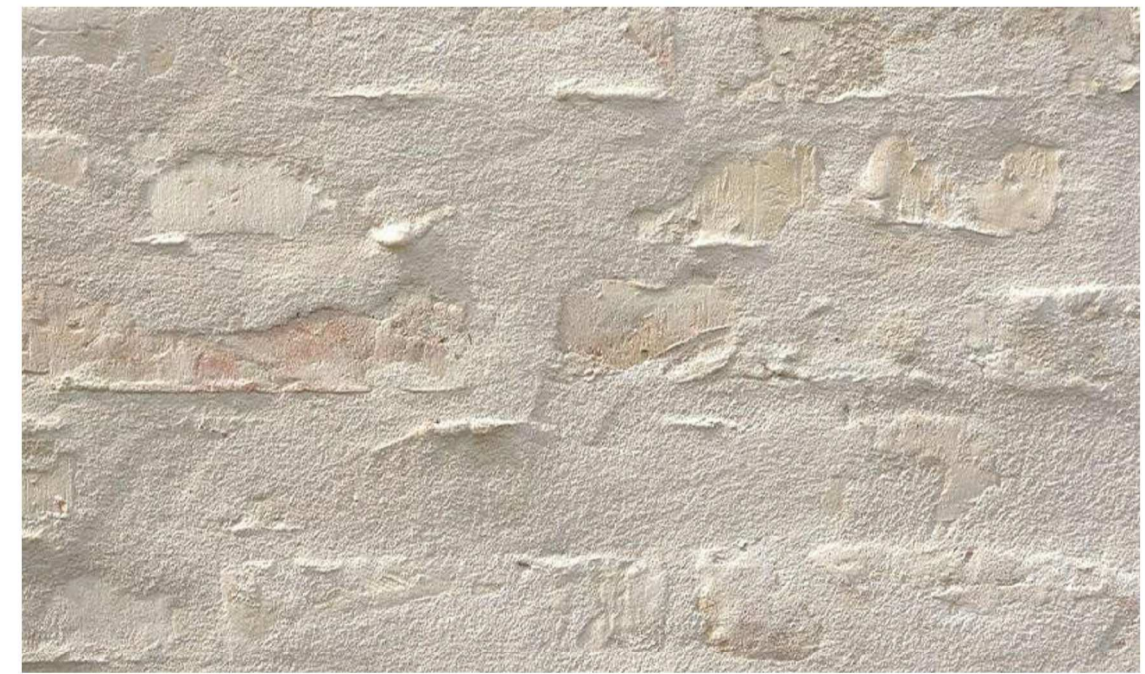


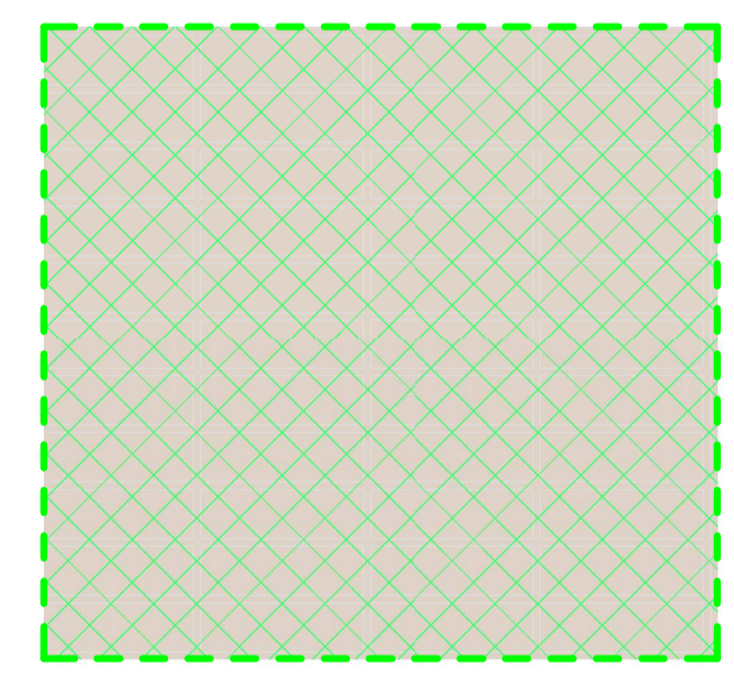
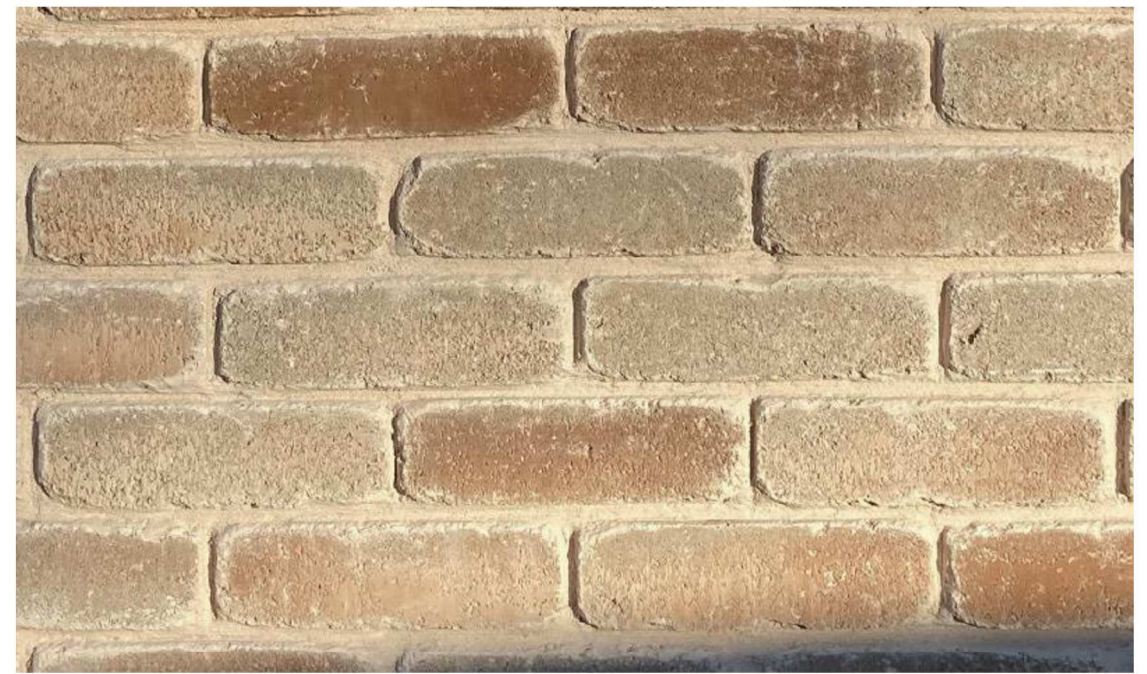
North Elevation MATERIALITY
1:100



BRICK FINISH 01 - Bag Washed Brick. F10/220
1:10



BRICK FINISH 02 - Brick with raked back mortar. F10/215
1:10



BRICK FINISH 03 - Stack bonded brick. F10/215
1:10



Do not scale this drawing
Do not derive dimensions from digital media

| Rev | Date | Drawn By | Checked By | Rev | Date | Revision Notes |
|------|------------|----------|------------|-----|------|---|
| T1 | 14.04.22 | JF | BH | | | ISSUED FOR TENDER |
| T1.1 | 27.09.22 | JF | BH | | | ISSUED FOR PRE-TENDER |
| T2 | 25.11.22 | ESB | JF | | | ISSUED FOR TENDER |
| T3 | 08.02.2022 | ESB | JF | | | NORTH ELEVATION RECESS STACK BOND EXTENTS |
| CD1 | 13.10.2023 | ESB | JF | | | NORTH ENTRANCE FACADE UPDATED. JULIET BALCONY REMOVED. |
| CD2 | 03.11.2023 | ESB | JF | | | ISSUED FOR CONSTRUCTION NORTH ENTRANCE ELEVATION UPDATED AS PER CLIENT INSTRUCTION |

| Drawn By | Checked By | Rev | Date | Revision Notes |
|----------|------------|-----|------|----------------|
| JF | BH | | | |
| JF | BH | | | |
| ESB | JF | | | |
| ESB | JF | | | |
| ESB | JF | | | |

| | | | | | | | |
|-----------------|-----------------------------|--------------|--------------|----------------------------------|---------------------------|-------------|-----|
| Drawing Status: | CONSTRUCTION | Suitability: | A5 | Drawing No: | 3820-FBA-XX-XX-DR-A-21_71 | Rev: | C02 |
| Job Title: | CULTURE HOUSE | Job No: | 3820 | © Drawing & Design Copyright of: | | | |
| Drawing Title: | NORTH ELEVATION MATERIALITY | | | | | | |
| Date: | NOV 22 | Scale: | As indicated | Drawn By: | JF | Checked By: | BH |

FAULKNERBROWNS ARCHITECTS

FaulknerBrowns LLP
Dobson House
Northumbrian Way
Killingworth
Newcastle upon Tyne
NE12 6JW
T+44(0)191 2683007
F+44(0)191 2478132