







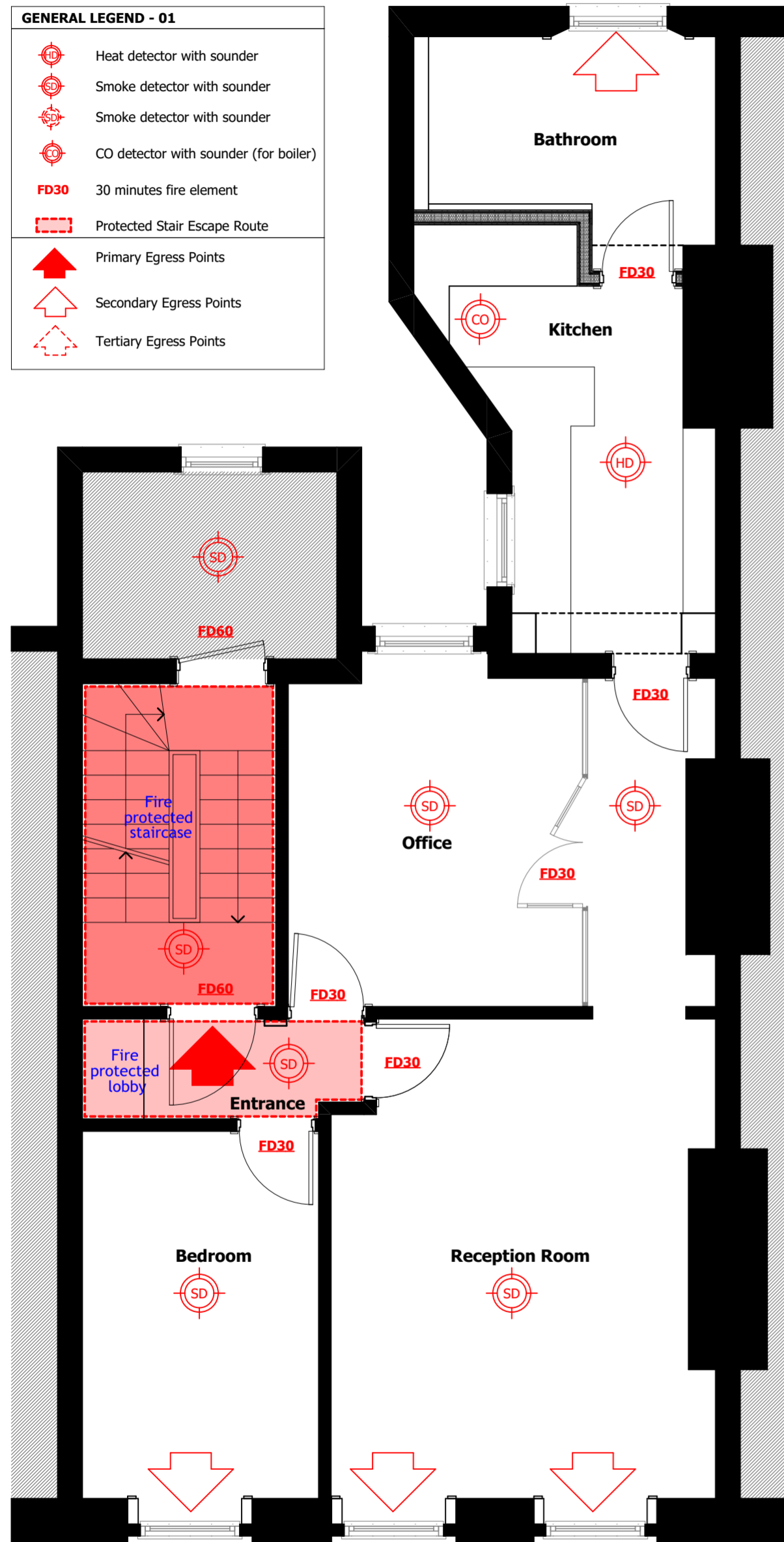


Fire Safety Strategy Plan First Floor Flat

GENERAL LEGEND - 01

-  Heat detector with sounder
-  Smoke detector with sounder
-  Smoke detector with sounder
-  CO detector with sounder (for boiler)
- FD30** 30 minutes fire element
-  Protected Stair Escape Route
-  Primary Egress Points
-  Secondary Egress Points
-  Tertiary Egress Points



Fire Safety Strategy Plan Second Floor Flat

GENERAL LEGEND - 02

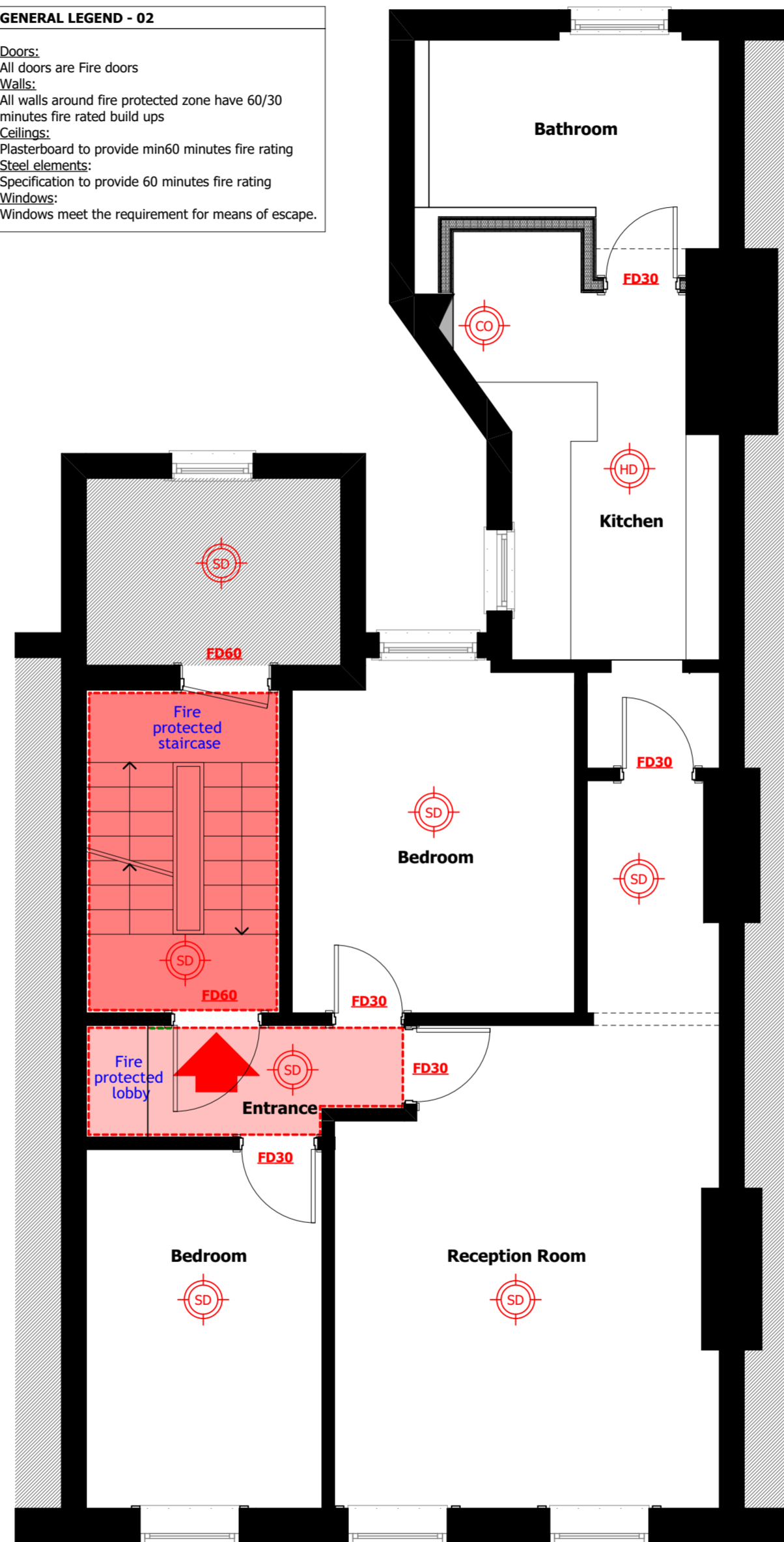
Doors:
All doors are Fire doors

Walls:
All walls around fire protected zone have 60/30 minutes fire rated build ups

Ceilings:
Plasterboard to provide min60 minutes fire rating

Steel elements:
Specification to provide 60 minutes fire rating

Windows:
Windows meet the requirement for means of escape.



Fire Safety Strategy Plan Third Floor Flat

GENERAL LEGEND - 03

FIRE INTEGRITY Fire separation walls and partitions are to continue to underside of main structure/horizontal fire separation members to ensure continuous compartmentalisation. Generally all passive fire protection means from Envirograf or similar.

All metal structure to be protected with fire liner to 1h (two layers as per British Gypsum system). Where boxing out not possible, intumescent paint to be applied (Envirograf 83 or similar approved).

All penetrations through ceilings to be fully fire sealed to retain fire integrity of the structure. Provide fire hoods to all recessed light fitting such as Envirograf Product 31 FT/AC or similar approved. Note that the above specification applies unless the lighting designer designates a specific product for their design. Refer to the lighting design and specification. The final suitability of installation is to be assessed by the qualified electrician/installer.

Where a HVAC system elements are located within an adjoining area that comprises a separate fire zone, integrity of the fire separation between the areas is to be maintained by the means of full fire lining and/or partitioning. Voids incorporating FCU (e.g. ceiling plenums) are to be fully fire lined providing full fire protection to the underside of the floor structure above, including joists. Use of fibrous insulation materials within HVAC installation is prohibited. Refer generic details.

All penetrations through fire separating walls and partitions to be fully sealed and fire dampers to be provided in accordance with building regulations. Gaps around ducts to be fully filled with fire expanding foam.

All risers to receive fire separation between floors (voids and runs). Refer M&E specification for further details on fire dampers.

All sockets and recesses in walls to be protected with Fire and Sound Trap (FST) from Envirograf or similar approved.

Firerated joinery (such as FCU boxing out in adjoining room) to receive fire and smoke seals from Envirograf or Lorient.

