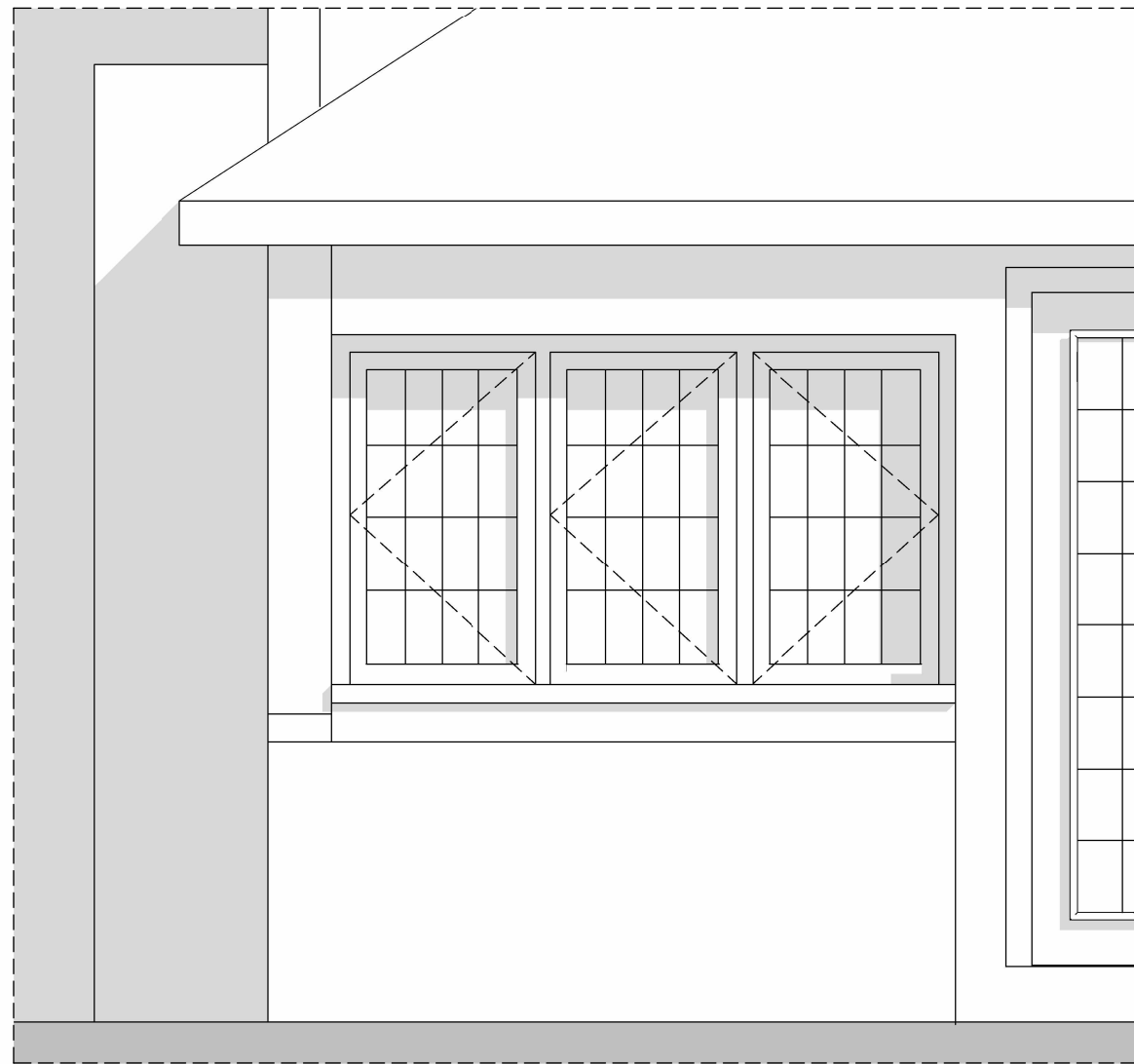
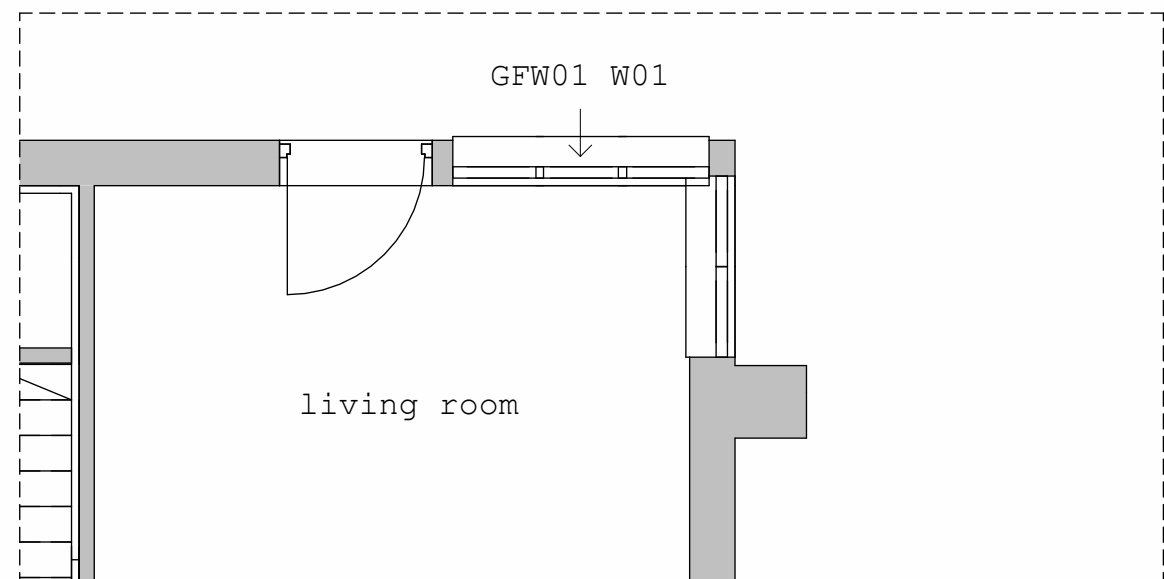


**GFW01 W01**



elevation - 1:20



ground floor plan - 1:50



external view



internal view

current condition:

estimated early C20 casement window  
 painted shut, unable to easily open

window has a poor thermal construction, and has therefore been fitted with internal secondary glazing

images show the windows have previously had internal glazing bars removed (highlighted with adjacent dashed red linework)

proposed replacement unit:

3 light 1 window unit to be replaced with like for like timber unit

replacement unit to contain leadwork to match existing

slimline double glazing to remove the need for any further secondary glazing



current secondary glazing

	Project: Whitfield Farmhouse, Hungerford Lane, Shurlock Row, RG10 0NY Drawing: GFW01 W01		RIBA Chartered Practice
	Collaborating with: Linda Behan	Date: Mar 24	
Job: 997	Drawing: 10-00	Revision:	Drawn By: JB Checked By: EM
Colony Architects Ltd. The Wine Store, Brewery Court, Theale, Reading, RG7 5AJ +44 (0)118 380 0328 hello@colonyarchitects.com colonyarchitects.com			

1:20	0.4m	0.8m	1.2m	1.6m	2.0m
1:50	1m	2m	3m	4m	5m