

0m

2m

Slate roof on battens etc on 12mm ply/OSB sheathing on 200x50 rafters with 150mm rigid insulation. Black UPVC rainwater goods (to RW butts)

Rooflights

Double-glazed obscure window, PPC aluminium frame

Lightweight steel trusses at each end and on c/l supporting steel ridge beams (to SE designs)

20mm horizontal charred larch on vertical plastic battens on VCL over 63/100/63 insulated concrete formwork (ICF) system, 32mm ins plasterboard inner lining

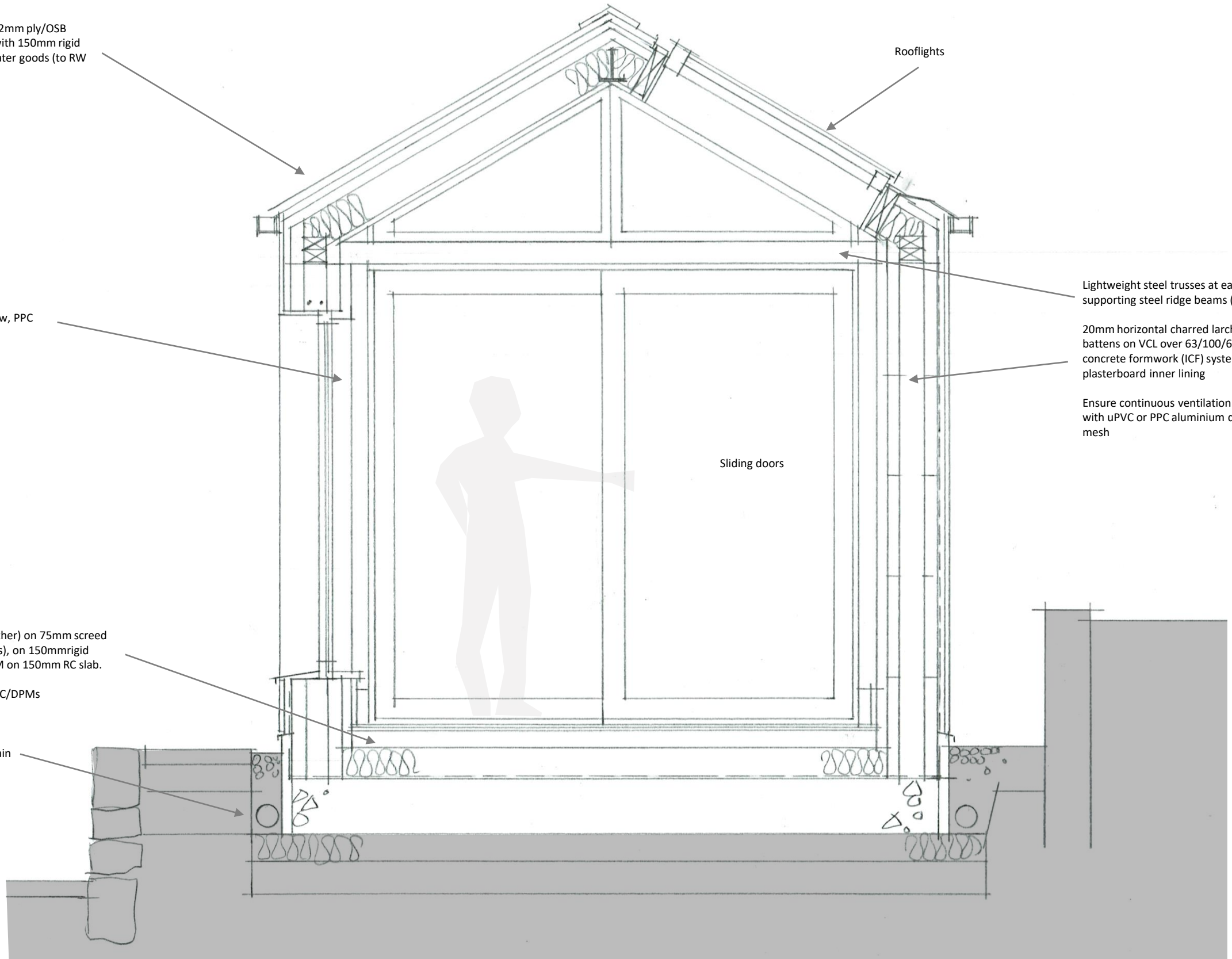
Ensure continuous ventilation behind cladding, with uPVC or PPC aluminium drip profile/insect mesh

Sliding doors

Engineered timber floor (or other) on 75mm screed (with underfloor heating pipes), on 150mm rigid insulation, Radon barrier/DPM on 150mm RC slab.

Ensure continuous/lapped DPC/DPMs

Gravel margin with French drain



Typical section - (Insulated Concrete Formwork construction)