

cottage

ASHTON

Nipper Roof

### Standard Features

- A wide range of sizes to choose from
- Opening windows in each side and fixed windows either side of the double doors
- Lockable double doors
- Plain, single glazed windows and doors
- Black ironmongery
- Toughened glass
- Polyester mineral felt in green, black or red
- Tongue and groove timber roof and floor
- High quality timber treatment applied throughout prior to delivery (excluding pressure treatment)

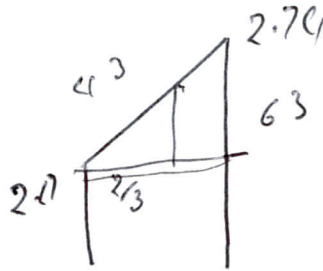
### Options

- A choice of Redwood, Heavy Duty Redwood, Heavy Duty Pressure Treated or Western Red Cedar tongue and groove cladding types
- Georgian style windows and doors
- Square leaded glazing
- Tinted glass (plain glass only)
- Additional windows
- Privacy style windows
- Brass or chrome ironmongery
- Bitumen felt tiles - available in a choice of three colours
- Pressure treated slatted roof
- Cedar slatted roof
- Cedar shingle roof
- Slate effect tiled roof - available in a choice of three colours
- Tongue and groove timber lining and insulation
- Painted MDF lining and insulation
- Comprehensive paint system to protect and decorate available in a variety of colours
- Laminate floor - a wide selection to choose from
- Heavy duty floor
- A set of pressure treated floor bearers

Size w x d (m)	Size w x d (ft)	Standard Redwood	Heavy Duty Redwood	Heavy Duty Pressure Treated	Cedar
2.44 x 1.83	8' x 6'	4,150	4,880	5,705	7,895
3.05 x 1.83	10' x 6'	4,870	5,675	6,650	9,115
3.66 x 1.83	12' x 6'	5,585	6,470	7,565	10,395
2.44 x 2.44	8' x 8'	4,965	5,750	6,665	9,295
3.05 x 2.44	10' x 8'	6,050	6,950	8,130	10,695
3.66 x 2.44	12' x 8'	6,865	7,860	9,075	12,770
4.27 x 2.44	14' x 8'	7,685	8,780	10,135	14,280
4.88 x 2.44	16' x 8'	8,330	9,515	10,985	15,790
3.05 x 3.05	10' x 10'	6,750	7,775	8,985	12,995
3.66 x 3.05	12' x 10'	7,655	8,775	10,160	14,350
4.27 x 3.05	14' x 10'	8,535	9,805	11,325	15,690
4.88 x 3.05	16' x 10'	9,445	10,795	12,415	16,995
5.49 x 3.05	18' x 10'	9,780	11,180	12,860	18,300
3.66 x 3.66	12' x 12'	9,045	10,340	11,870	16,305
4.27 x 3.66	14' x 12'	9,995	11,355	13,025	17,990
4.88 x 3.66	16' x 12'	10,935	12,570	14,425	19,675
5.49 x 3.66	18' x 12'	11,870	13,590	15,635	21,355
6.10 x 3.66	20' x 12'	12,595	14,420	16,590	23,035

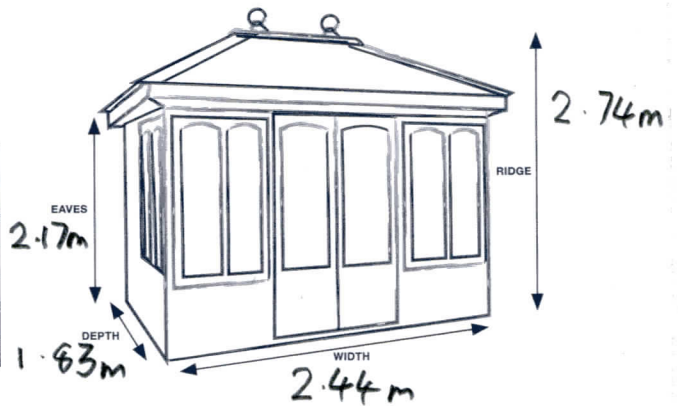
01443 866403  
1230

10772



0.9  
0.45  
1.35  
2ft

ASHTON				
Building Depth (m)	External Height (m)		Internal Height (m)	
	Ridge Height	Eaves Height	Ridge Height	Eaves Height
1.83	2.74	2.17	2.41	2.05
2.44	2.89	2.17	2.56	2.05
3.05	3.05	2.17	2.72	2.05
3.66	3.20	2.17	2.87	2.05



*cottage*

ASHTON

