







## CASEMENT

Thermally broken window that allows for both side hung and top hung outward openings. This solution, with a thermal break zone of 32 mm and a transmittance  $U_w$  from 1.0  $W/m^2K$ , has the British security certification PAS 24, being especially suitable for this market.

### FEATURES

Transmittance		$U_w \geq 1.0$ ( $W/m^2K$ )
Acoustic insulation		Rw up to 45 dB
Air permeability		Class 4
Water tightness		Class E1200
Wind resistance		Class CE 2400
Security test		PASSED

Reference test: 1,438 x 1,355 m / 1 sash + 1 fixed light  
 Security test: Reference test 1,438 x 1,355 m / 1 sash + 1 fixed light

### POSSIBILITIES



SECURITY HARDWARE

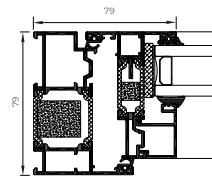


CONCEALED HINGES

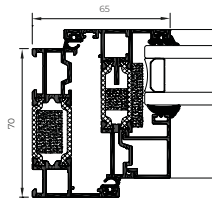
### OPENING POSSIBILITIES



Outward Opening  
 Side hung  
 Top hung



\* Flush Version



\* Standard Version



Thermally broken 

### Sightlines

Frame 70 mm, Sash 70 mm

**Polyamide Strip Length**  
 32 mm

**Profile Thickness**  
 Window 1,6 mm

### Glazing

Max. 44 mm, Min. 23 mm

### Maximum Sash Dimensions

**Slim Sash (Side Hung):**  
 Width (L) 700 mm, Height (H) 1300 mm

**Slim Sash (Top Hung):**  
 Width (L) 1200 mm, Height (H) 1300 mm

**Heavy Duty Sash (Side Hung):**  
 Width (L) 750 mm, Height (H) 1750 mm

**Heavy Duty Sash (Top Hung):**  
 Width (L) 1800 mm, Height (H) 1800 mm

**Maximum Sash Weight**

Side Hung Slim Sash: 35 kg

Top Hung Slim Sash: 50 kg

Side Hung Heavy Duty Sash: 42 kg

Top Hung Heavy Duty Sash: 100 kg

Consult maximum weight and dimensions according to typologies



CASEMENT