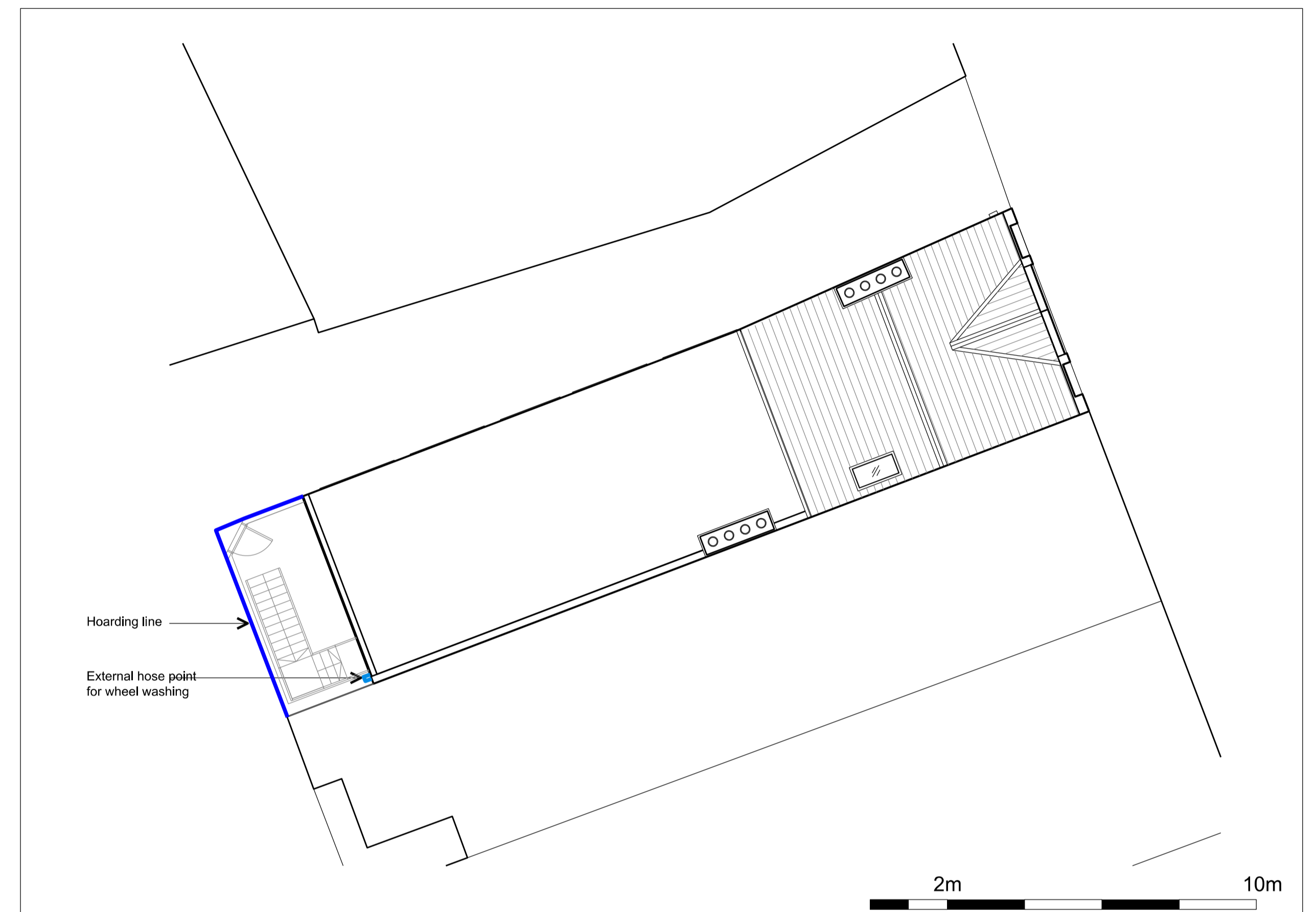


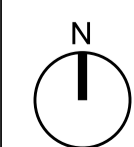
01 LOGISTICS PLAN
SCALE 1:250



02 HOARDING PLAN
SCALE 1:100

- (a) loading and unloading of plant and materials; See drawing 01 opposite
- (b) storage of plant and materials; Inside building and in private rear yard. See drawing 02 above
- (c) programme of works (including measures for traffic management); 7 month programme from commencement date
- (d) provision of boundary hoarding, behind any visibility zones of construction traffic routing; See drawing 02 above
- (e) hours of operation; 8am-6pm Monday - Friday. Saturdays 8am-1pm. No works on Sundays or bank holidays. Deliveries restricted to 9:30am - 3:30pm
- (f) means to prevent deposition of mud on the highway. Washing station for wheel wash down located next to site access and before vehicles return to public highway. See Drawing 2

03 NOTES



General Notes

- Do not scale from this drawing unless for planning.
- All dimensions to be verified on site by the contractor, before proceeding, and such dimensions to be his responsibility.
- Report all drawing errors, omissions and discrepancies to Habtec Ltd.
- All stated areas on this drawing are approximate and to be treated as strictly indicative.
- Any Ordnance Survey mapping data in this drawing is used under license. Its use is strictly for the preparation of information for this project. Where used Ordnance Survey copyright acknowledgement must be displayed.

REV	DATE	DESCRIPTION	CKD
P01	17/02/23	Planning	

JOB TITLE
97 High Street Sutton

CLIENT
--

DRAWING TITLE
Construction Logistics Plan

DRAWING STATUS
Planning

SCALE
1:250@A1 & 1:100@A3

DATE
17/10/23

DRAWN BY

CHECKED

PROJECT
2202

DRAWING NUMBER
(PL)_003

REVISION
P01