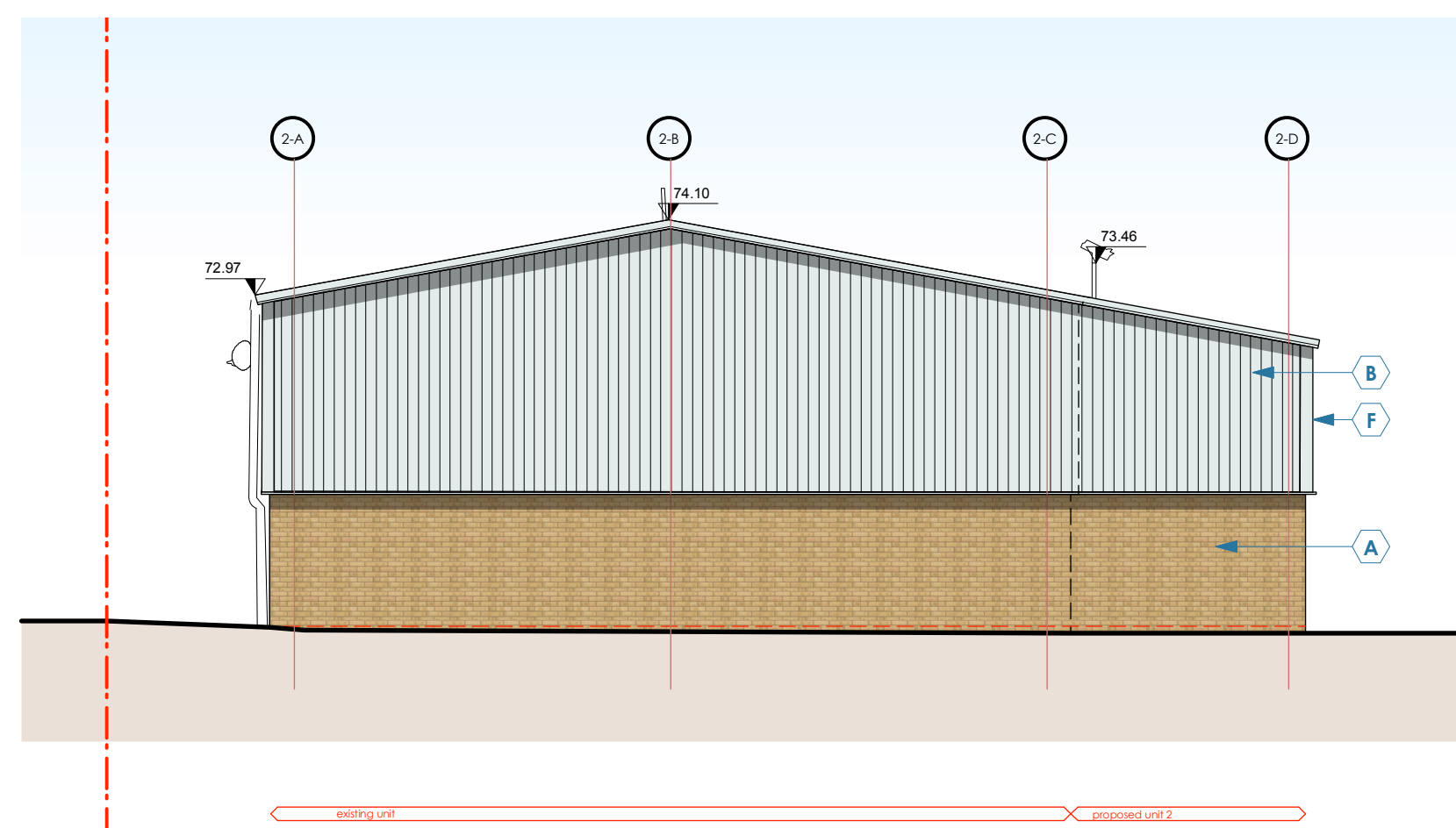
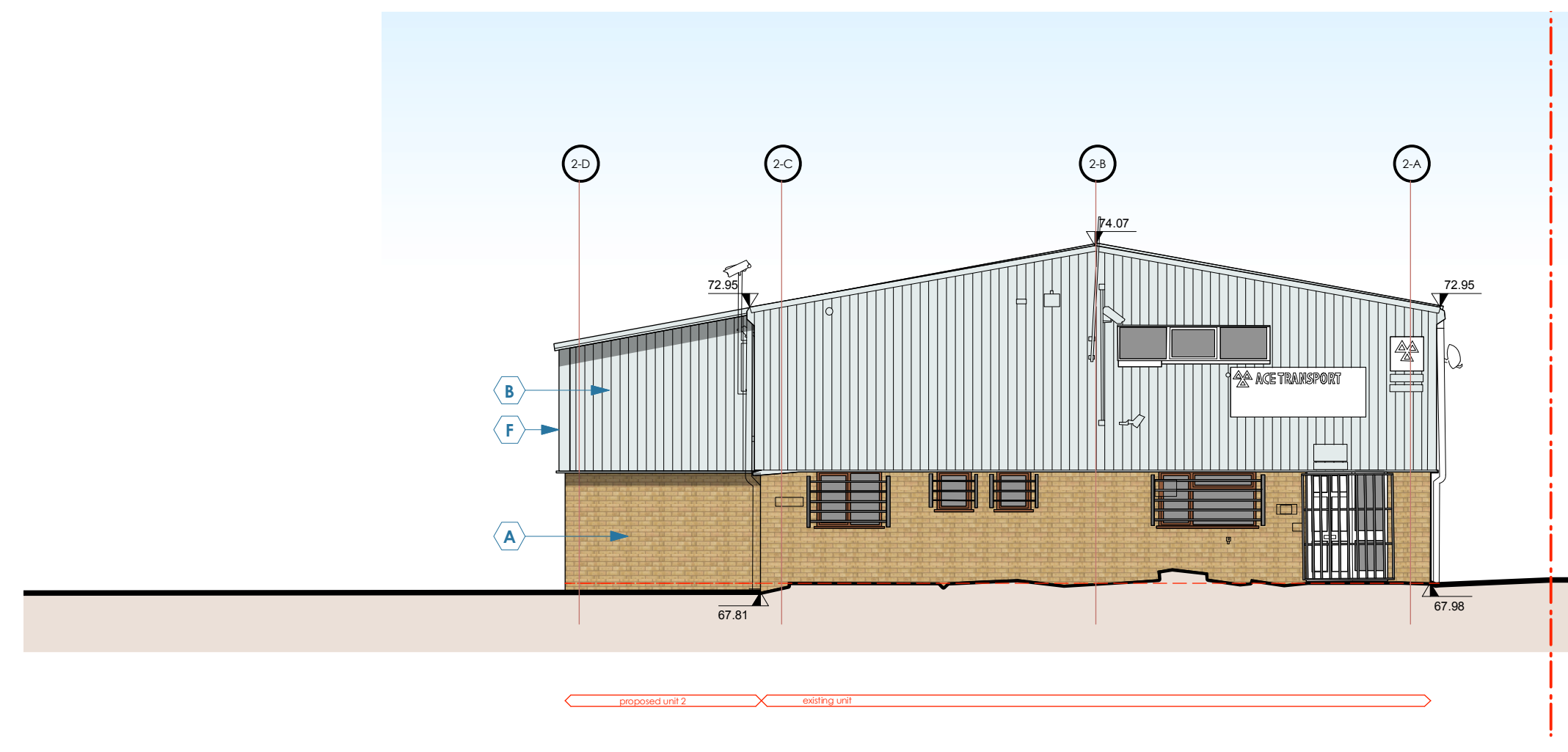


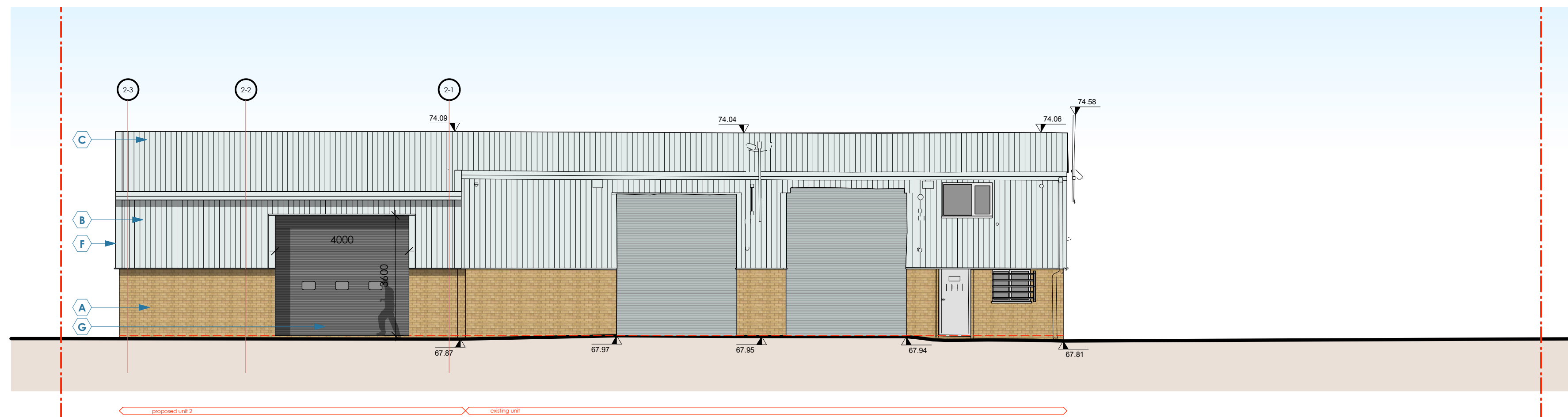
Unit 2 - south elevation
Datum: 60.00m



Elevation 2
Datum: 60.00m



Unit 2 - west elevation
Datum: 60.00m



Unit 2 - south elevation
Datum: 60.00m

materials legend

- A** buff, dragface, brick to match existing - use a brick matching service i.e. E.H.Smith, bond to be stretcher, mortar to be natural, bucket handle struck, U-Value = 0.25W/m.K
- B** CA Group Twintherm wall cladding, Colour - Tata Steel colorcoat (agate grey) RAL 7038 (Confidex Guarantee 25 yrs), Profile sheet - CA 32 1000W, With CA LT 17 1000S liner sheet, U-Value = 0.25W/m.K Firewall, where shown, FW15 240 minutes integrity, 15 minutes insulation
- C** CA Group Twintherm Roof cladding, Colour - Tata Steel colorcoat (agate grey) RAL 7038 (Confidex Guarantee 25 yrs), Profile sheet - CA 32 1000W, With CA LT 17 1000S liner sheet, U-Value = 0.16W/m.K - Roof to incorporate rooflights to 12%. Firewall, where shown, FW15 240 minutes integrity, 15 minutes insulation
- D** potential solar PV array, details to be calculated as part of the SBEM/EPC process.
- E** PPC Double glazed window/door system, thermall broke, with double glazed units containing solar glass and manifestation where shown, Colour - Slate grey RAL 7012.
- F** 2mm pressed aluminium flashing / drip / gutter, Colour - Agate grey RAL 7038.
- G** Hormann or Assa Abloy Level Access door, Three vision panels, Colour - Slate grey RAL 7012, U-Value = 1.3 W/m.K
- H** Steel escape door set, Colour - Slate grey RAL 7012, U-Value = 1.6 W/m.K
- J** Fareface blockwork bond to be stretcher, mortar to be natural, bucket handle struck, U-Value = 0.25W/m.K

date	desc	status
Jan 22	unit 2 elevations	PLANNING
drawn kbl	client Mr K Smith	add Winchester Avenue, Blaby, Leicester LE8 4GZ
Scale 1:100@A1	job no 21-119	dwg no B002
		rev B