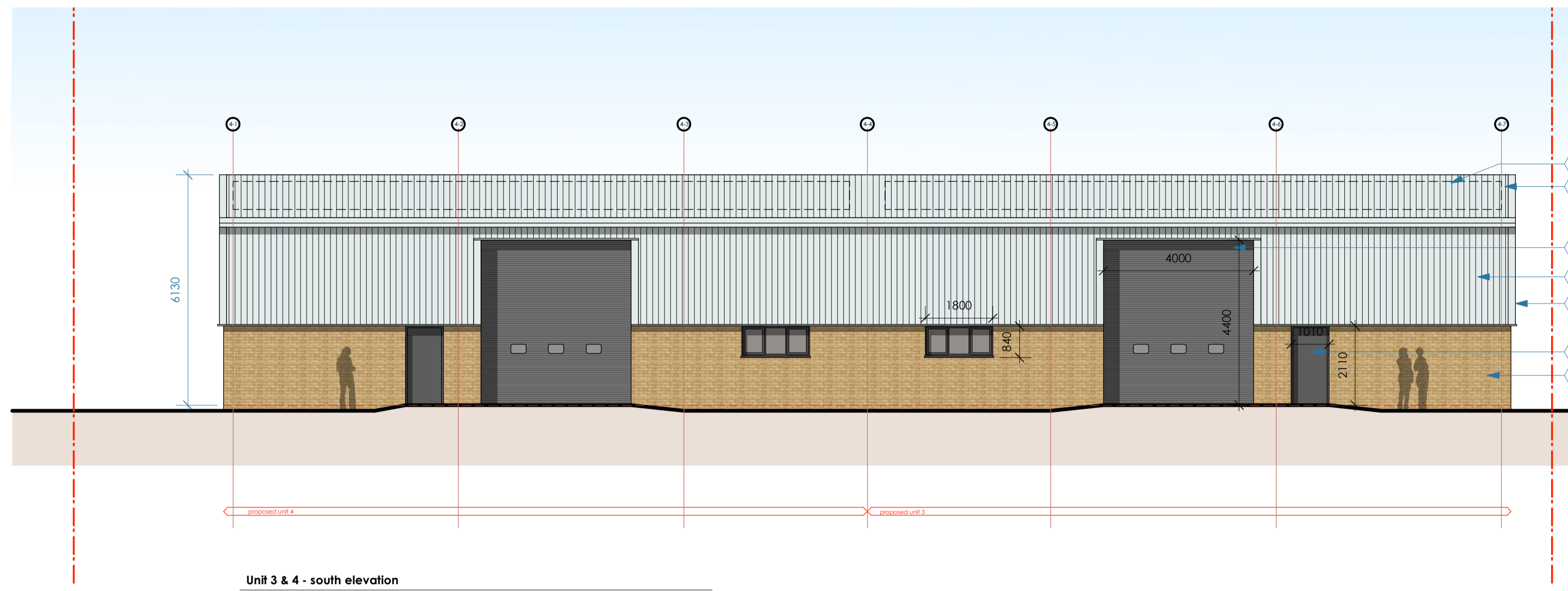


**copyright:**  
the copyright of this drawing, and the design it contains, remains the property of the architect. It may not be reproduced or copied without Hone Architecture Ltd's permission.  
**notes:**  
All dimensions to be checked onsite, written dimensions take precedence over scaled.

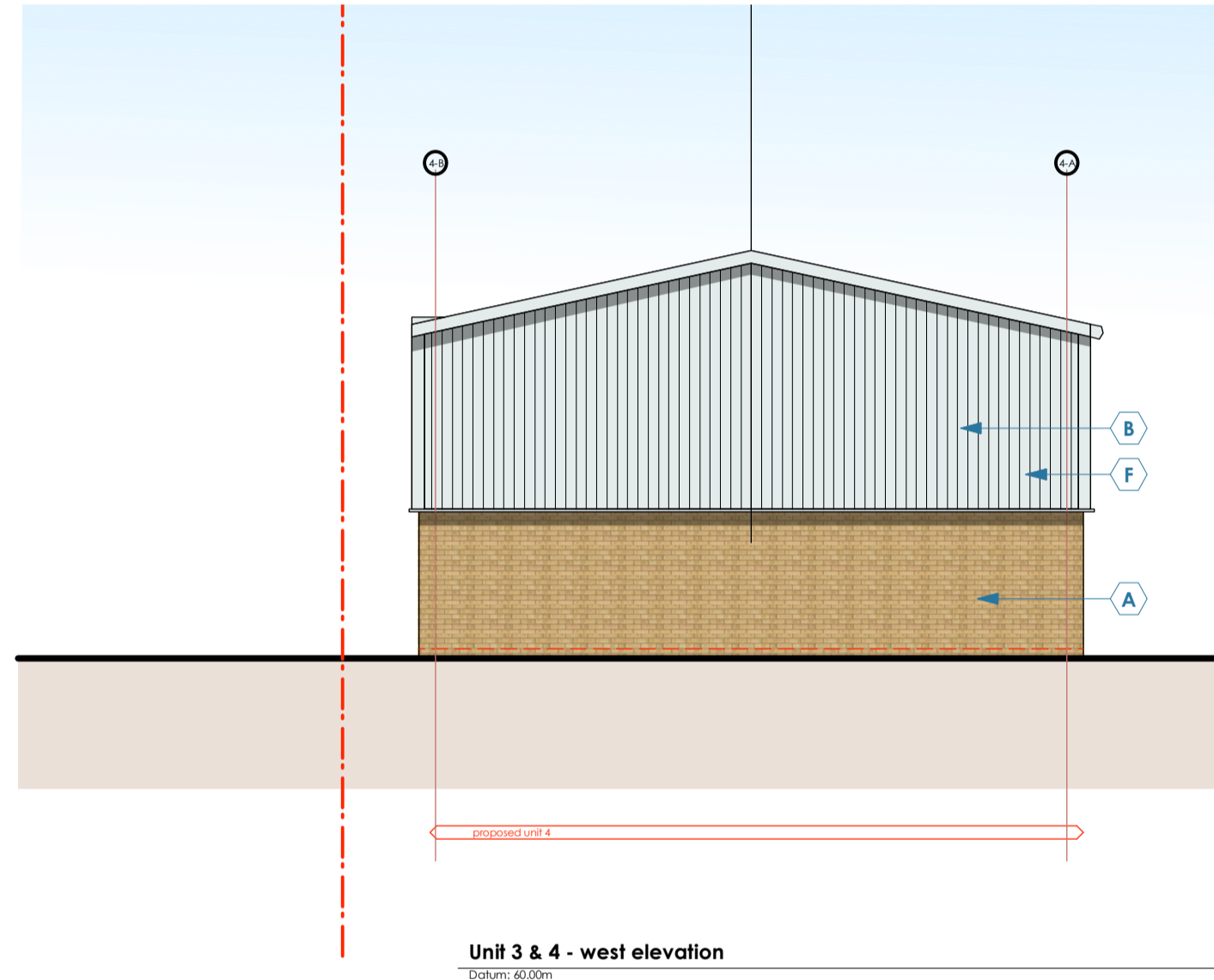
rev date int desc

A:26/03/22 kbl units 3 and 4 moved 1 metre away from boundary

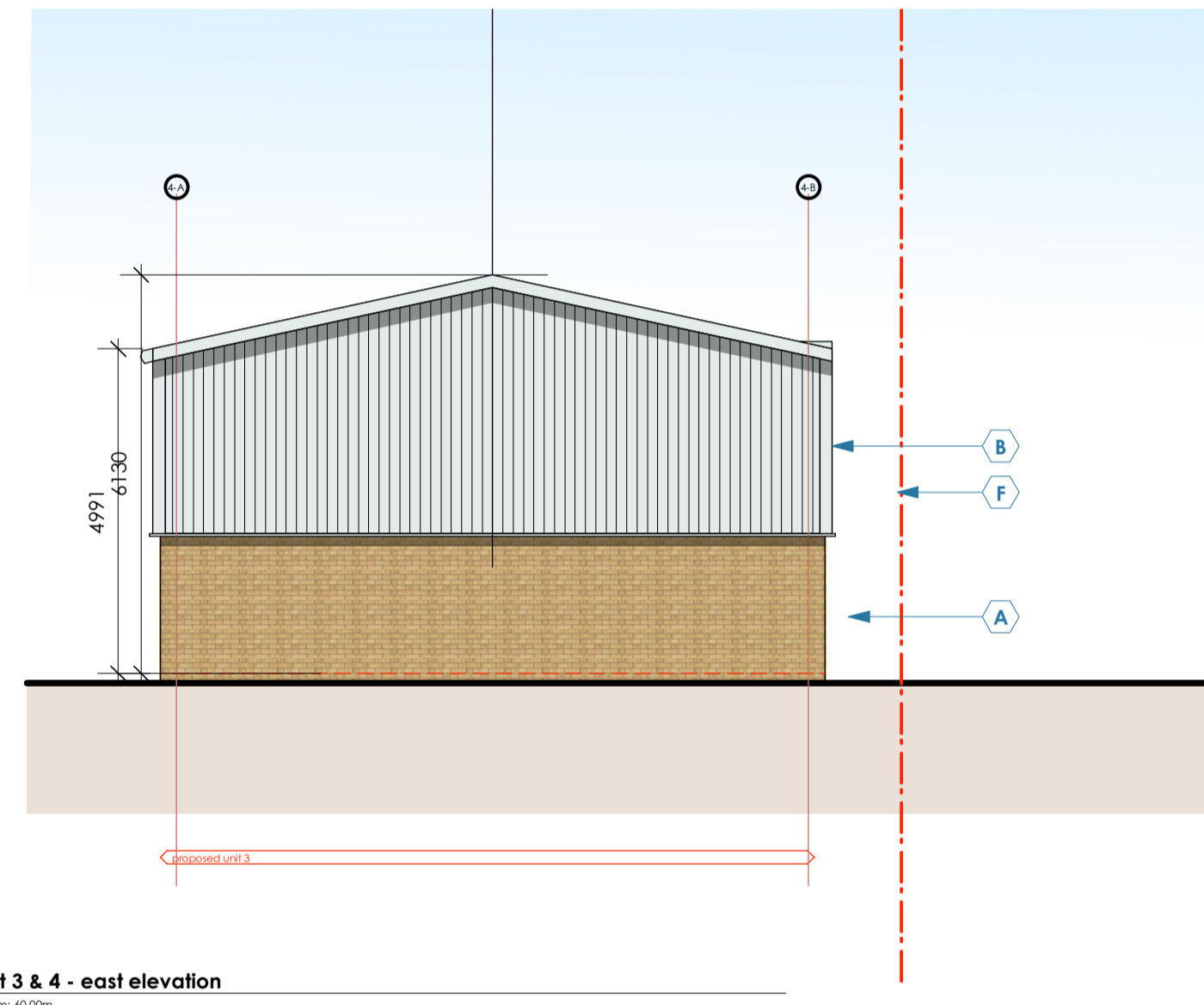
B:11/02/24 kbl units 3 and 4 blockwork shown to rail elev, cladding colour changed to RAL 7038



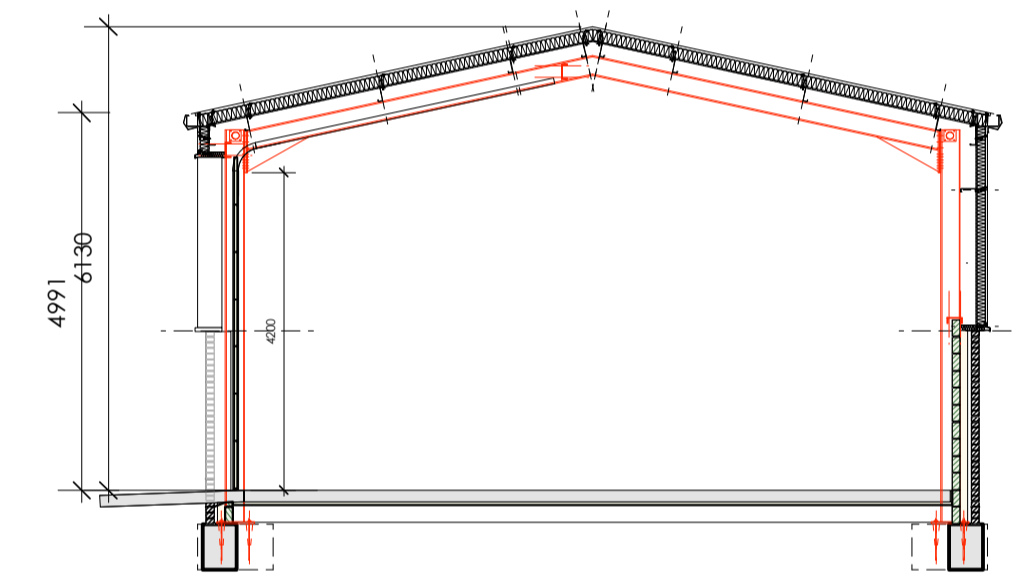
Unit 3 & 4 - south elevation  
Datum: 40.00m



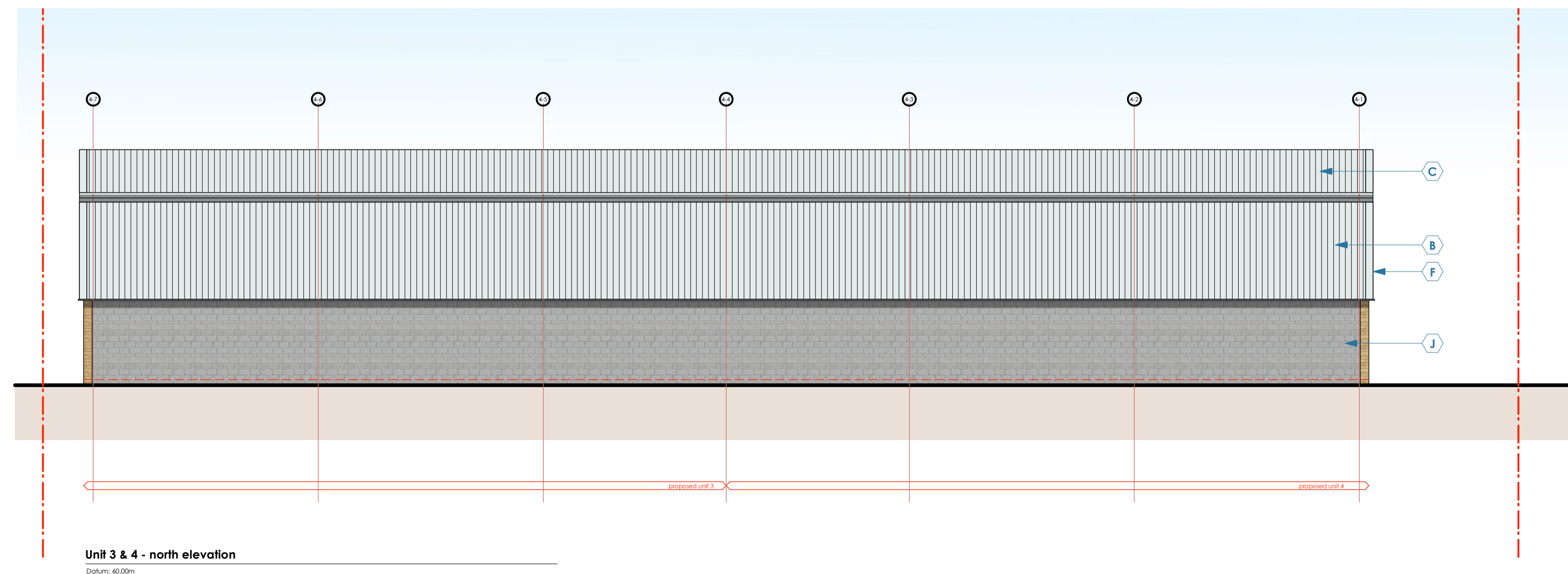
Unit 3 & 4 - west elevation  
Datum: 40.00m



Unit 3 & 4 - east elevation  
Datum: 40.00m



Typical section



Unit 3 & 4 - north elevation  
Datum: 40.00m

**materials legend**

- A** buff, dragface, brick to match existing - use a brick matching service i.e. E.H.Smith, bond to be stretcher, mortar to be natural, bucket handle struck, U-Value = 0.25W/m.K
- B** CA Group Twintherm wall cladding, Colour - Tata Steel colorcoat (agate grey) RAL 7038 (Confidex Guarantee 25 yrs), Profile sheet - CA 32 1000W, With CA LT 17 1000S liner sheet, U-Value = 0.25W/m.K Firewall, where shown, FW15 240 minutes integrity, 15 minutes insulation
- C** CA Group Twintherm Roof cladding, Colour - Tata Steel colorcoat (agate grey) RAL 7038 (Confidex Guarantee 25 yrs), Profile sheet - CA 32 1000W, With CA LT 17 1000S liner sheet, U-Value = 0.16W/m.K - Roof to incorporate rooflights to 12%. Firewall, where shown, FW15 240 minutes integrity, 15 minutes insulation
- D** potential solar PV array, details to be calculated as part of the SBEM/EPC process.
- E** PPC Double glazed window/door system, thermal broke, with double glazed units containing solar glass and manifestation where shown, Colour - Slate grey RAL 7012.
- F** 2mm pressed aluminium flashing / drip / gutter, Colour - Agate grey RAL 7038.
- G** Hormann or Assa Abloy Level Access door, Three vision panels, Colour - Slate grey RAL 7012, U-Value = 1.3 W/m.K
- H** Steel escape door set, Colour - Slate grey RAL 7012, U-Value = 1.6 W/m.K
- J** Faceface blockwork bond to be stretcher, mortar to be natural, bucket handle struck, U-Value = 0.25W/m.K

date	Jan 22	desc	<b>unit 3-4 elevations</b>	status	PLANNING
drawn	kbl	client	Mr K Smith	add	Winchester Avenue, Blaby, Leicester LE8 4GZ
Scale	1:100@A1	job no	<b>21-119</b>	dwg no	<b>B021</b>
				rev	<b>B</b>