



Guide to NMA

at:

Winchester Avenue, Blaby, Leicester LE8 4GZ

Project Description:

New industrial units for

Client:

Mr K Smith.

Document Revision:

A: Initial Issue 11/02/24

1.0 EXISTING PLANNING PERMISSION

1.1 APPROVAL NO 22/0303/FUL

- 1.1.1 Approval was issued on 15th June 2022, this includes a standard condition requiring work to be within three years. The expiration of the permission would therefore be 15th June 2025.
- 1.1.2 Work has begun, and the permission is activated.
- 1.1.3 Similarly of particular note, the permission includes a condition which details the approved drawings:
- 1.1.4 **Condition 2.** The development hereby approved shall be built in strict accordance with the following approved drawings:
- *Block Plan - Dr No - 21-119-A010A*
 - *Proposed Site Plan - Dr No - 21-119-A011A*
 - *Hard landscaping and Fencing - Dr No - 21-119-A012*
 - *Unit 2 GND Plan - Dr No - 21-119-B001A*
 - *Unit 2 Elevations - Dr No - 21-119-B002A*
 - *Units 3 and 4 GND - Dr No - 21-119-B020A*
 - *Units 3 and 4 Elevations - Dr No - 21-119-B021A*

1.2 NON MATERIAL AMENDMENTS SOUGHT

- 1.2.1 This application seeks approval for the following changes:
- NMA 1) Cladding colour change.
- NMA 2) Unit 2 door replacement.
- NMA 3) Units 3 and 4 rear elevation facing rail line – material change.

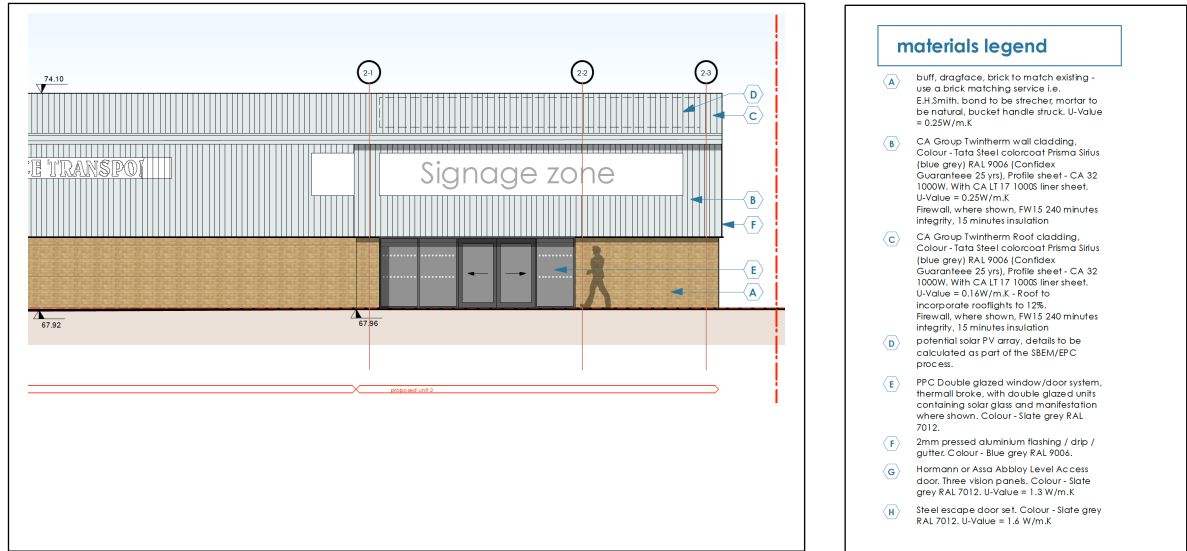
2.0 NMA 1 – CLADDING COLOUR CHANGE

2.1 APPROVED DETAILS

- 2.1.1 The planning approval specifically detailed cladding colours on approved drawings:
- *Unit 2 Elevations - Dr No - 21-119-B002A*
 - *Units 3 and 4 Elevations - Dr No - 21-119-B021A*

2.1.2 The above approved drawings state the cladding material as – Prisma Sirius (blue Grey) RAL 9006, CA Group Twin Therm profiled sheet CA 32 1000W.

2.1.3 Below is an excerpt from the approved drawings.



2.2 PROPOSED DETAILS

2.2.1 The cladding is proposed to change from the approved to – Tata Steel Trisomet composite panel, coloured RAL 7038 Agate Grey

2.2.2 Drawings have been amended to REVISION B:

- Unit 2 Elevations - Dr No - 21-119-B002B
- Units 3 and 4 Elevations - Dr No - 21-119-B021B

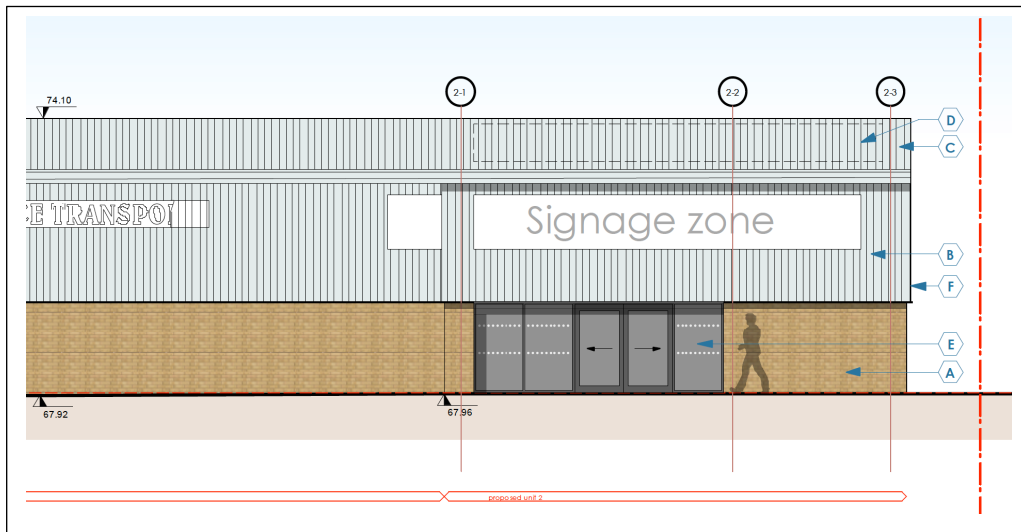
3.0 NMA 2 - UNIT 2 DOOR REPLACEMENT.

3.1 APPROVED DETAILS

3.1.1 The planning approval detailed Unit 2 entrance doorway on approved drawings:

- Unit 2 Elevations - Dr No - 21-119-B002A
- Unit 2 GND Plan - Dr No - 21-119-B001A

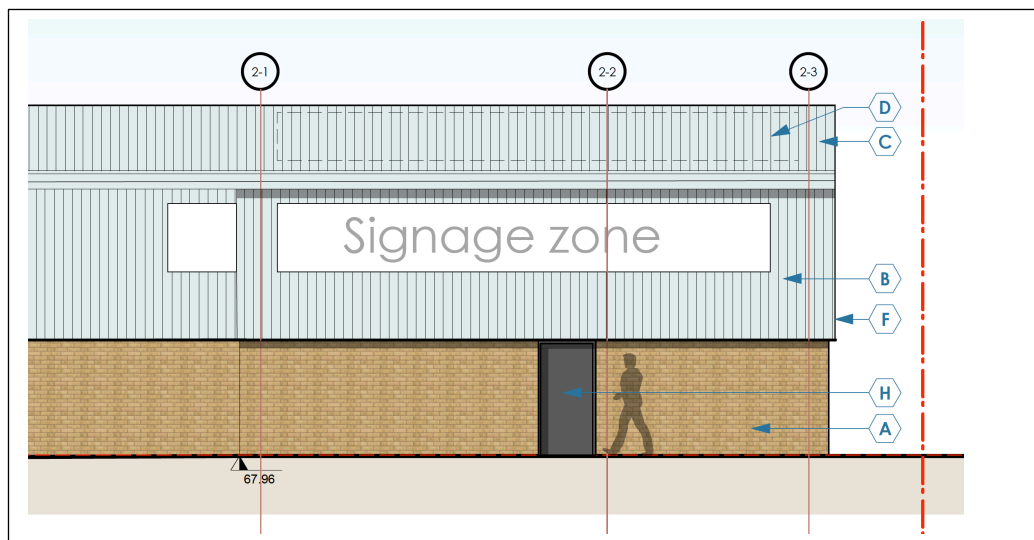
3.1.2 The approved drawings showed a double glazed curtain walling:



3.2 PROPOSED DETAILS

3.2.1 The proposed drawings detail Unit 2 entrance doorway as a steel security door to match the other approved units, on approved drawings:

- Unit 2 Elevations - Dr No - 21-119-B002B
- Unit 2 GND Plan - Dr No - 21-119-B001B

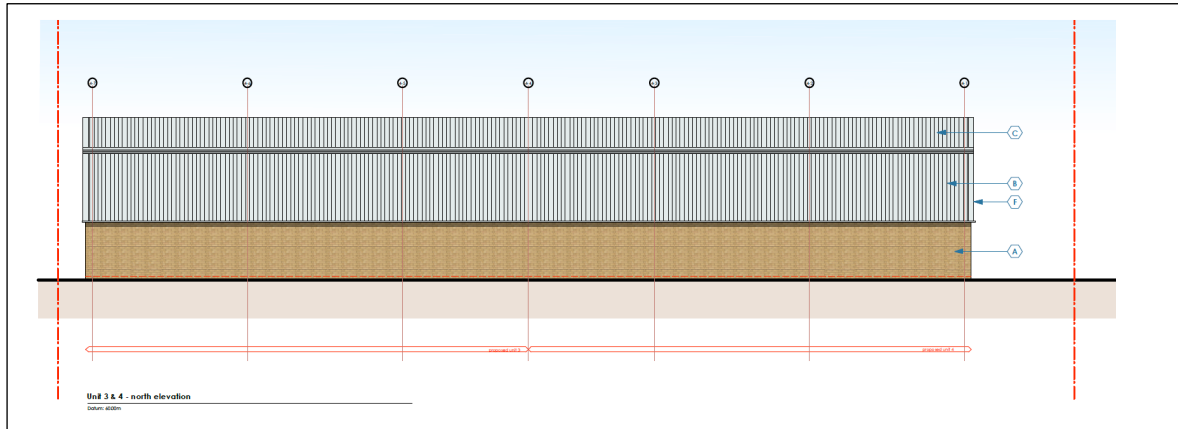


3.2.2 The proposed drawings show a single steel door set:

4.0 NMA 3 – UNIT 3 & 4 REAR ELEVATION MATERIAL CHANGE

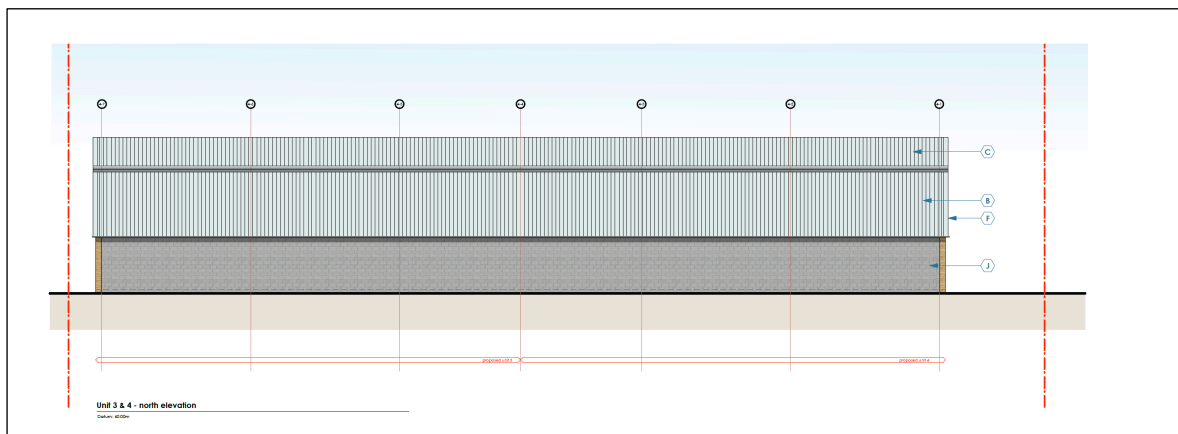
4.1 APPROVED DETAILS

- 4.1.1 The planning approval detailed Unit 3 and 4 rear elevation (facing the railway line) on approved drawings:
- *Units 3 and 4 Elevations - Dr No - 21-119-B021A*
- 4.1.2 The elevation has been approved with brickwork to match the existing Unit 1 and the new three units.



4.2 PROPOSED DETAILS

- 4.2.1 The brickwork is proposed to change from the approved brickwork to – fareface blockwork on the rear elevation only.
- 4.2.2 Drawings have been amended to REVISION B:
- *Units 3 and 4 Elevations - Dr No - 21-119-B021B*



5.0 SUMMARY

5.1.1 The approved and proposed drawings are listed below:

	Approved	Proposed
NMA 1 – Cladding Colour Change	21-119-B002A	21-119-B002B
	21-119-B021A	21-119-B021A
NMA 2 – Door Replacement	21-119-B002A	21-119-B002B
	21-119-B001A	21-119-B001B
NMA 3 – Unit 3 & 4 rear material change	21-119-B021A	21-119-B021B