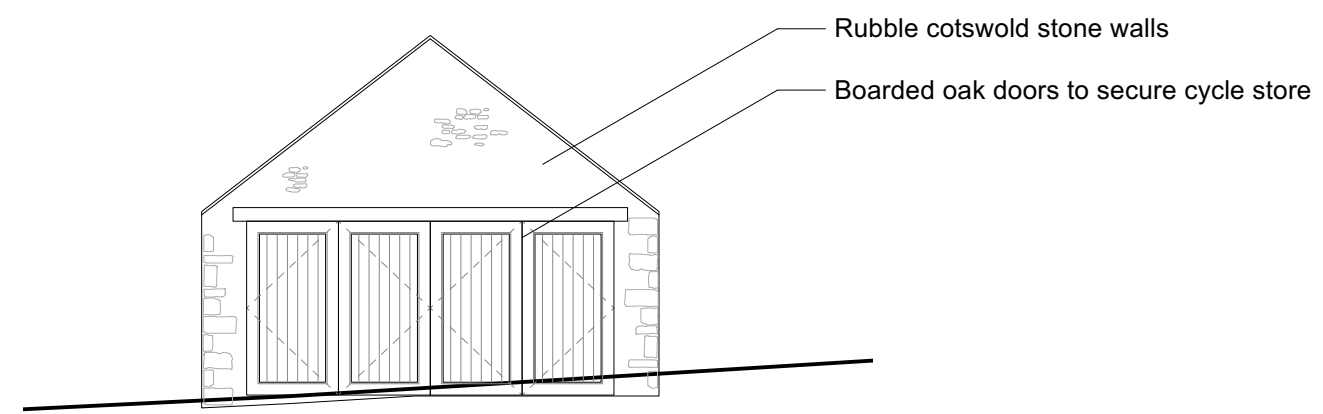
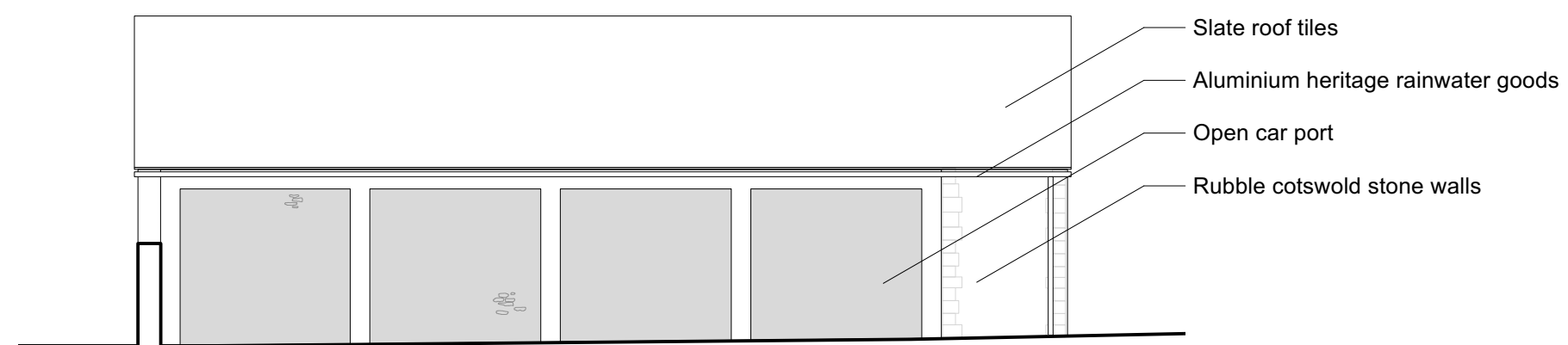


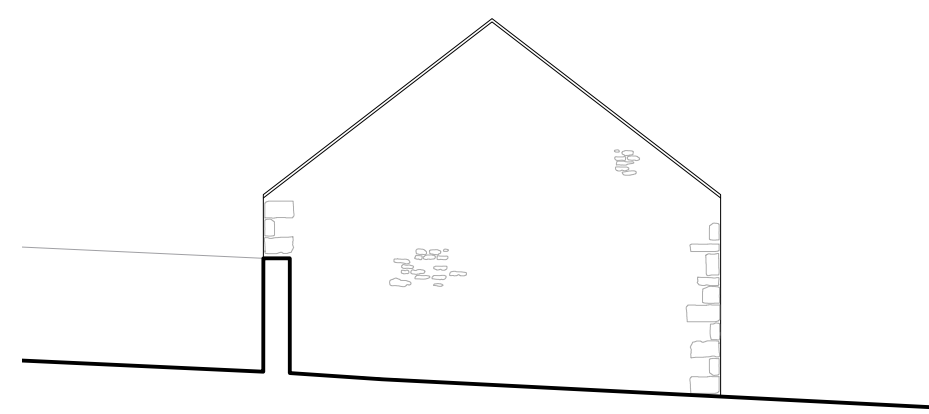
Car Port & Cycle Store
North Elevation



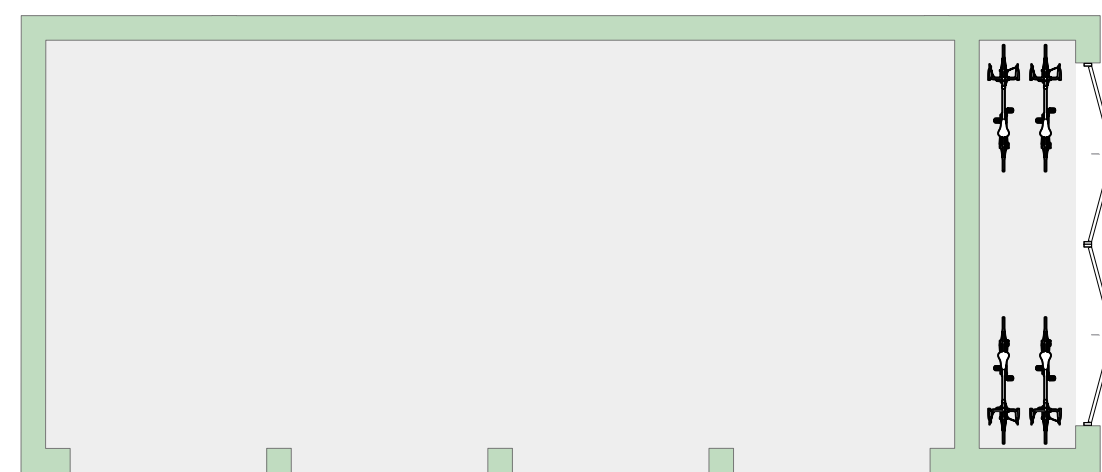
Car Port & Cycle Store
East Elevation



Car Port & Cycle Store
South Elevation



Car Port & Cycle Store
West Elevation



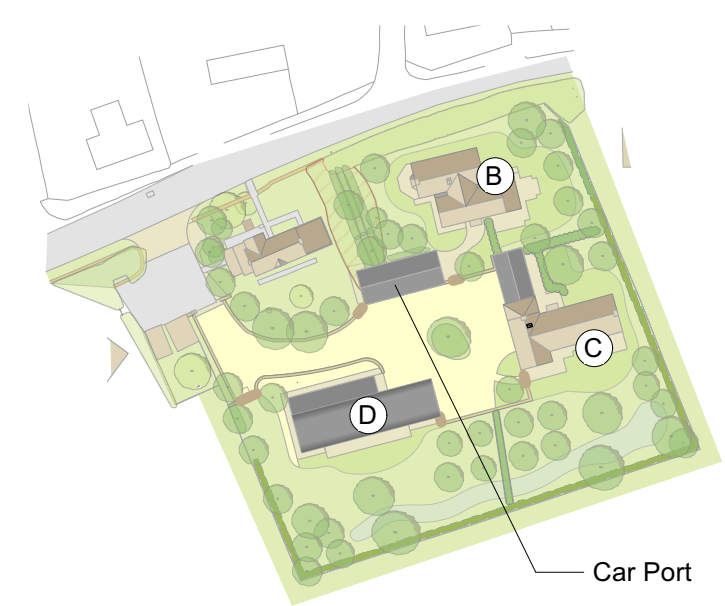
Car Port & Cycle Store
Plan



Car Port & Cycle Store
Roof Plan



0 1 2 3 4 5m



Reference Plan
Not to Scale

Notes

1. This drawing remains copyright of Blake Architects Limited and may not be reproduced or copied without consent in writing.
2. For construction use figured dimensions only.
3. Any discrepancies between site and drawings to be reported to the architect immediately.
4. Read in conjunction with all relevant structural and mechanical & electrical engineers drawings.
5. Survey undertaken by:

REVISIONS				
PROJECT	Stanmore House			
ADDRESS	STANMORE HOUSE, EWEN, CIRENCESTER, GL7 6BU			
B L A K E A R C H I T E C T S	Blake Architects Limited 1 Coves Barn, Winstone Gloucestershire, GL7 7JZ 011295 84407 (t) mail@blakearchitects.co.uk www.blakearchitects.co.uk			
TITLE	Proposed Car Port			
DRAWING NUMBER	23.13.03.04			
STATUS	Planning			
DRAWN	CHECKED	DATE	SCALE	REVISION
HERO	JN	01.02.24	1:100 @ A1	-