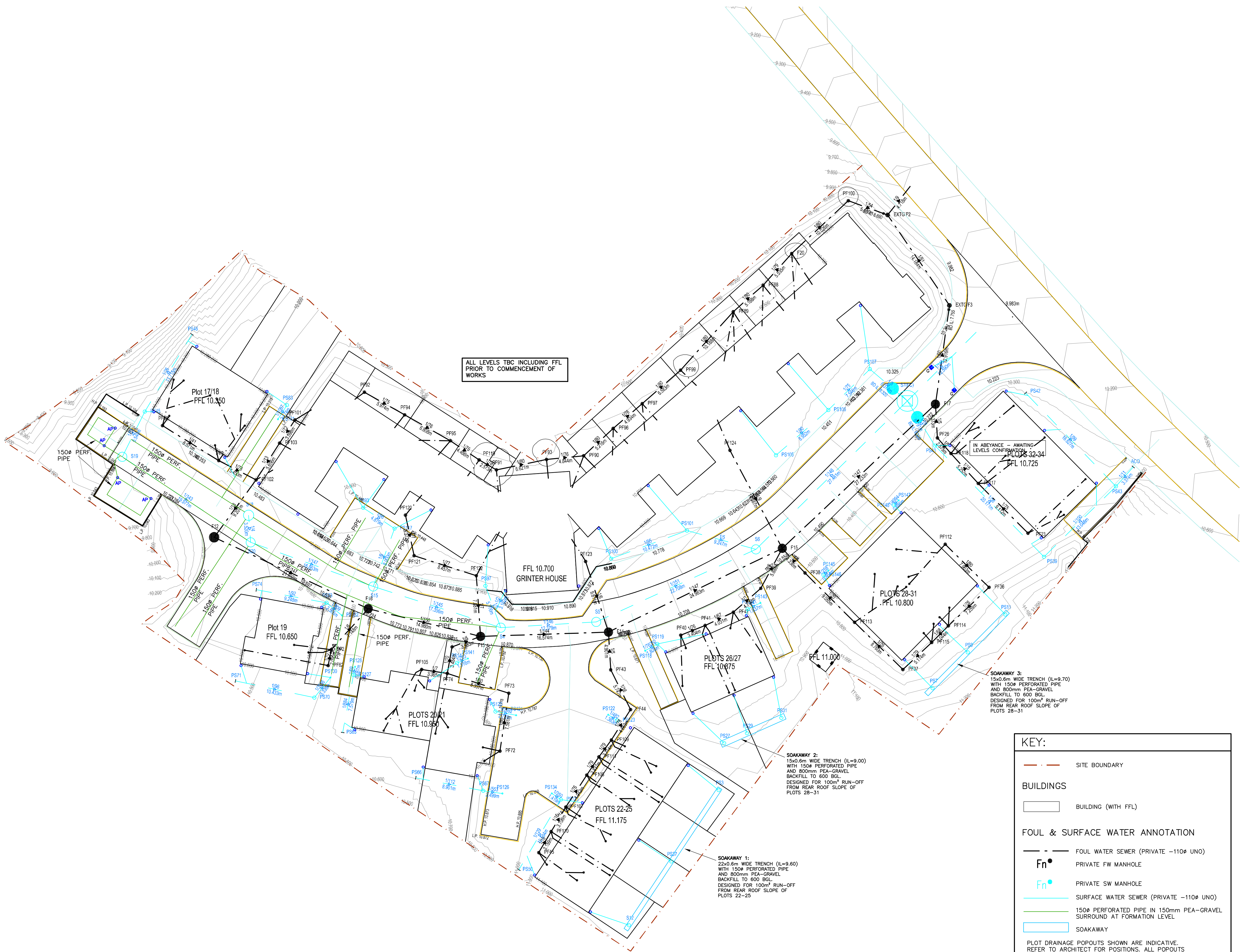


NOTES:

- REFER TO ARCHITECTS DRAWINGS FOR ALL SETOUT DIMENSIONS, OFFSETS AND CO-ORDINATES. ALL SITE LEVELS AND CRITICAL ALIGNMENT AT BOUNDARY AND/OR JUNCTIONS TO EXISTING TO BE VERIFIED AND AGREED ON SITE PRIOR TO COMMENCEMENT OF CONSTRUCTION. DESIGNS BY YORKSILLS ARE BASED UPON THIRD PARTY SURVEYS AND HAVE BEEN SUBJECT TO INTERPOLATION.
- THE SPECIFICATION FOR THE FOUL AND SURFACE WATER DRAINAGE SYSTEM IS TO COMPLY WITH WRC PUBLICATION (7TH ED) "SEWERS FOR ADOPTION" IN ALL RESPECTS AND APPROVED BY ANGLIAN WATER WHERE ADOPTED.
- FULL METHOD STATEMENTS AND RISK ASSESSMENTS MUST BE CARRIED OUT BY THE CONTRACTOR WITH REGARD TO SAFE WORK IN TRENCHES AND THE PROVISIONS OF "SAFE WORKING IN SEWERS AND SEWAGE WORKS" PUBLISHED BY THE NATIONAL HEALTH AND SAFETY COMMITTEE FOR THE WATER SERVICE.
- ALL PRIVATE PIPES WITH LESS THAN 1000mm COVER ARE TO BE ENCASED IN MIN. 150mm CONCRETE WITH JOINTS AT MAX. 5.0m CENTRES. CONTRACTOR TO ENSURE NO DAMAGE OCCURS TO PIPES DUE TO CONSTRUCTION TRAFFIC. PRIVATE CONNECTIONS TO THE ADOPTABLE SEWERS ARE A MINIMUM 100MM DIAMETER AND LAID SOFFIT TO SOFFIT
- USE CLASS 5 BEDDING AND SURROUND ELSEWHERE UNO CONCRETE PIPE PROTECTION WHERE SHOWN TO BE PROVIDED TO THE FULL PIPE LENGTH UNLESS NOTED OTHERWISE
- REFER ARCHITECTS DRAWINGS FOR DOMESTIC FOUL AND SURFACE DRAINAGE, INCLUDING SVP AND RWP POSITIONS. ALL GULLIES AND DOWNPIPES TO BE RODDABLE. USE 110ø PIPEWORK LAID AT MIN 1 IN 80 UNO
- ALL MANHOLE AND CHANNEL DRAIN COVERS IN FOOTWAYS ETC. TO BE MIN. CLASS C250 TO DIN 19580. COVERS IN TRAFFICKED/ADOPTED AREAS TO BE MIN CLASS D400 TO DIN 19580.
- FLOW CONTROL DEVICE TO BE DESIGNED AND SUPPLIED BY OTHERS TO SUIT 1.25m MAX HEAD OF WATER - LIMITING THE OUTFLOW TO max 5.0 l/s.

TO BE READ IN CONJUNCTION WITH ALL RELEVANT YS DRAWINGS: 6873:
 101 - SITE SURVEY
 102 - PROPOSED SITE LAYOUT
 110 - ROAD SETOUT & NOTES
 111 - ROAD LONG SECTIONS (1)
 112 - ROAD CROSS SECTIONS (1)
 115 - ROAD DETAILS (1)
 116 - ROAD DETAILS (2)
 120 - SITE DRAINAGE GENERAL ARRANGEMENT PUBLIC
 121 - SITE DRAINAGE GENERAL ARRANGEMENT PRIVATE
 122 - DRAINAGE SCHEDULE PRIVATE
 125 - DRAINAGE DETAILS PUBLIC
 126/7 - DRAINAGE DETAILS PRIVATE
 150...155 - LCC MINOR WORKS DRAWINGS



KEY:

- SITE BOUNDARY
- BUILDINGS
- BUILDING (WITH FFL)
- FOUL & SURFACE WATER ANNOTATION
- FOUL WATER SEWER (PRIVATE -110ø UNO)
- Fn PRIVATE FW MANHOLE
- Fn PRIVATE SW MANHOLE
- SURFACE WATER SEWER (PRIVATE -110ø UNO)
- 150ø PERFORATED PIPE IN 150mm PEA-GRAVEL SURROUND AT FORMATION LEVEL
- SOAKAWAY

PLOT DRAINAGE POPOUTS SHOWN ARE INDICATIVE. REFER TO ARCHITECT FOR POSITIONS. ALL POPOUTS TO CONNECT INTO CLOSEST MANHOLE. BACK OF HOUSES (22-31) TO CONNECT INTO SOAKWAYS.

CONSTRUCTION ISSUE				
Rev	Revision	Drn	App	Date
D	GRINTER HOUSE PRIVATE FW DRAINAGE MH MOVED	ZB	RW	11/23
C	PRIVATE DRAINAGE AND ROAD DETAILS UPDATED	ZB	RW	10/23
B	PRIV FW DRAINAGE POPOUTS & CONTOURS UPDATED	ZB	RW	09/23
A	CONSTRUCTION ISSUE	ZB	RW	09/23

YORKSILLS
 CONSULTING ENGINEERS LIMITED

YORKSILLS LTD, 5 CHECKPOINT COURT, LINCOLN. LN6 3PW
 01522 690815 www.yorksills.co.uk

Client
Lindum Group

Project
**PROPOSED RESIDENTIAL DEVELOPMENT
 GRINTER CLOSE, NORTH HYKEHAM**

Title
**SITE DRAINAGE LAYOUT
 PRIVATE NETWORKS**

Date	Scale	Drawing No.	Rev
JAN 23	1:250	6873/121	D
Appr	MS		