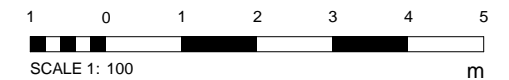
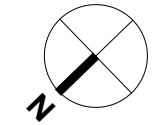
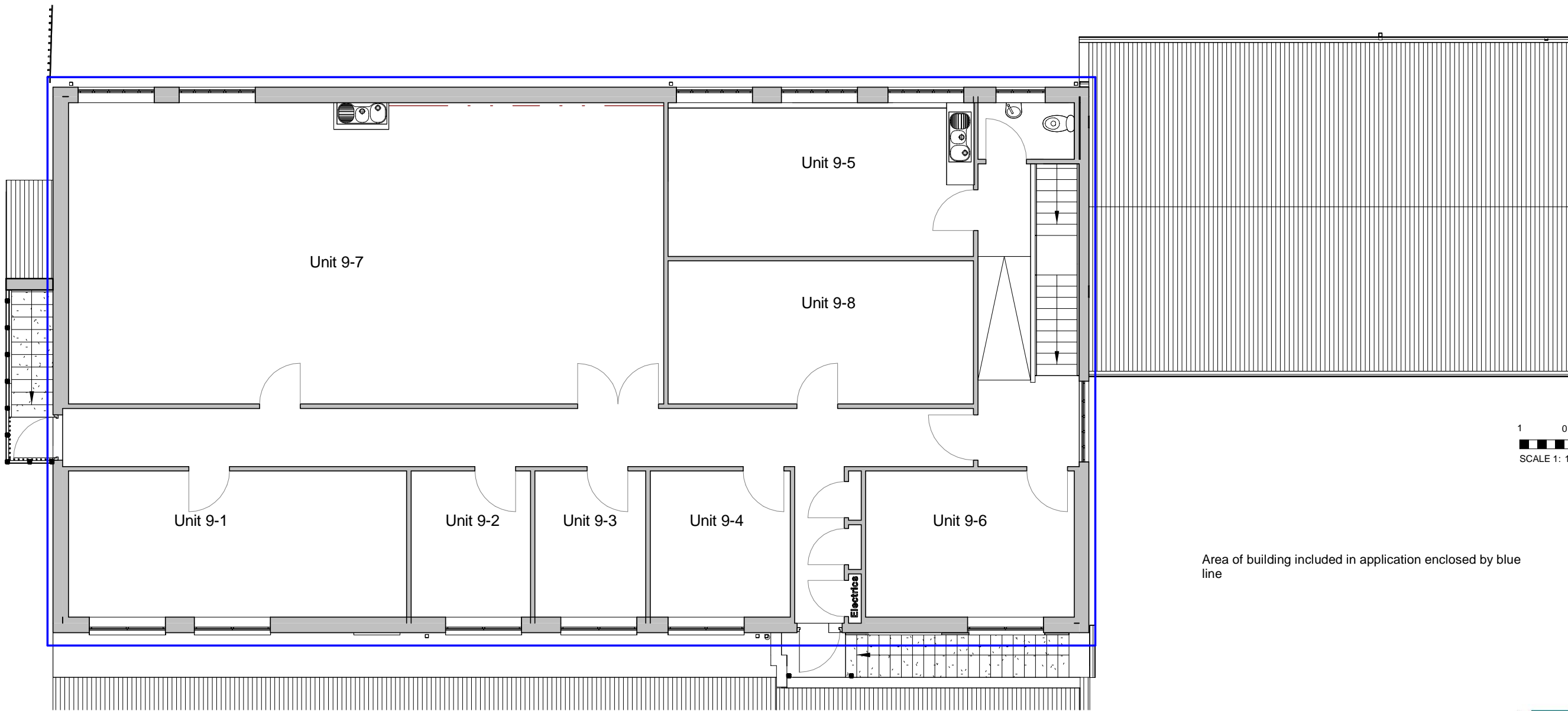


Health & Safety Information

There are no issues associated with this drawing - information is generally "as-built"



Area of building included in application enclosed by blue line

Unit	Tenant	Business Use	Planning Category
9-1	S Gibson	Sports Massage	1A
9-2	European Observatoire of Sport & Employment	Office	1A
9-3	D Paxton Plumbing & Heating	Office	1A
9-4	V Paterson	Nail Bar	1A
9-5	A MacLean Water & Drainage Design	Office	1A
9-6	T Davidson	Skin Care	1A
9-7	Kelso Amateur Operatic Society	Costume Hire	6
9-8	Douglas Home & Co	Document Storage	6

RAY CHERRY ARCHITECT

Ray Cherry RIBA, RIAS, IMApS
 Hillmount Cottage
 Main Street
 Birgham
 Berwickshire
 TD12 4NE
 Telephone: 07800 749 806
 E-mail: info@raycherry-architect.co.uk
 Website: www.raycherry-architect.co.uk

Project:
 U-stor Business Units Ltd
 Spylaw Road, Kelso

Title:
 First Floor Plan - As Built

Scale (@A3) 1 : 100

Date: March 2024 **Project No.:** 23-012

Drg. No.: 202 **Rev.:** D1