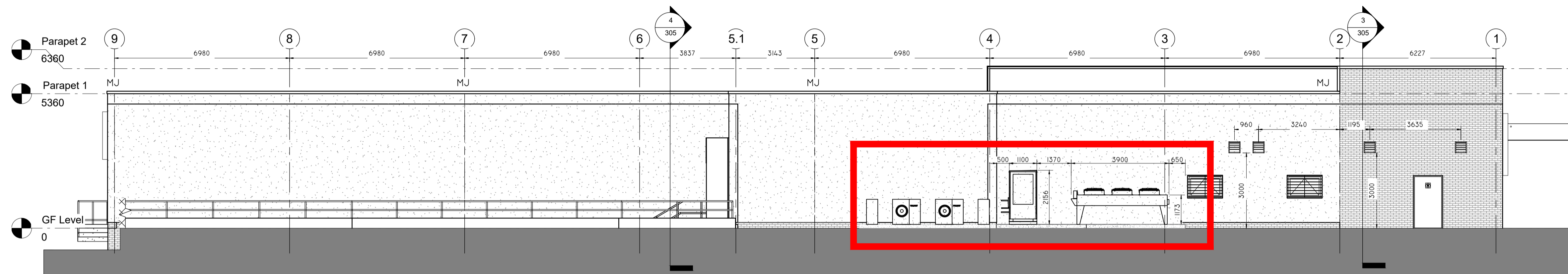
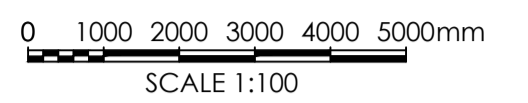
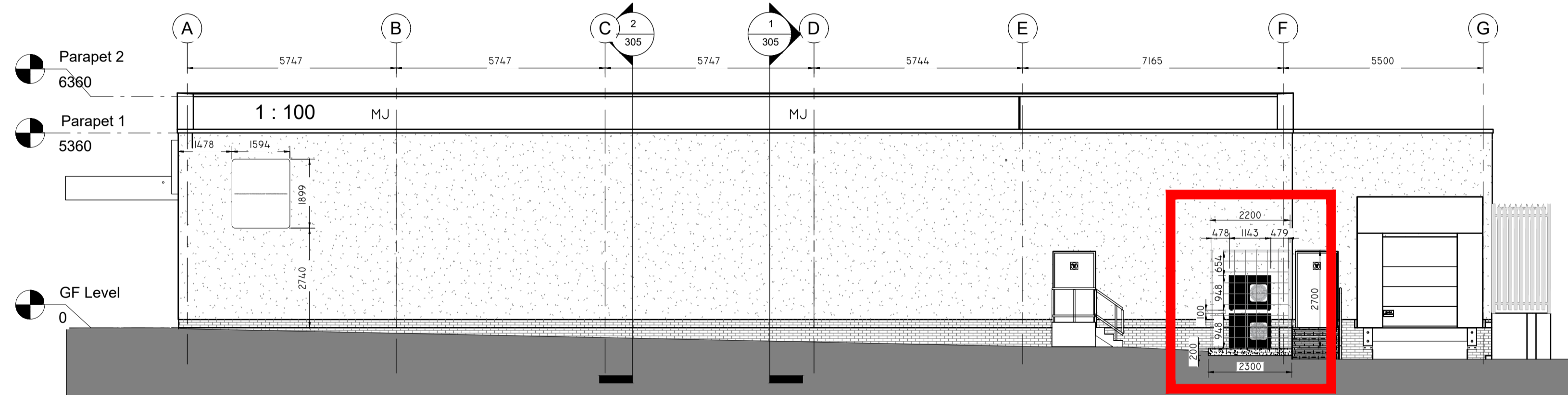


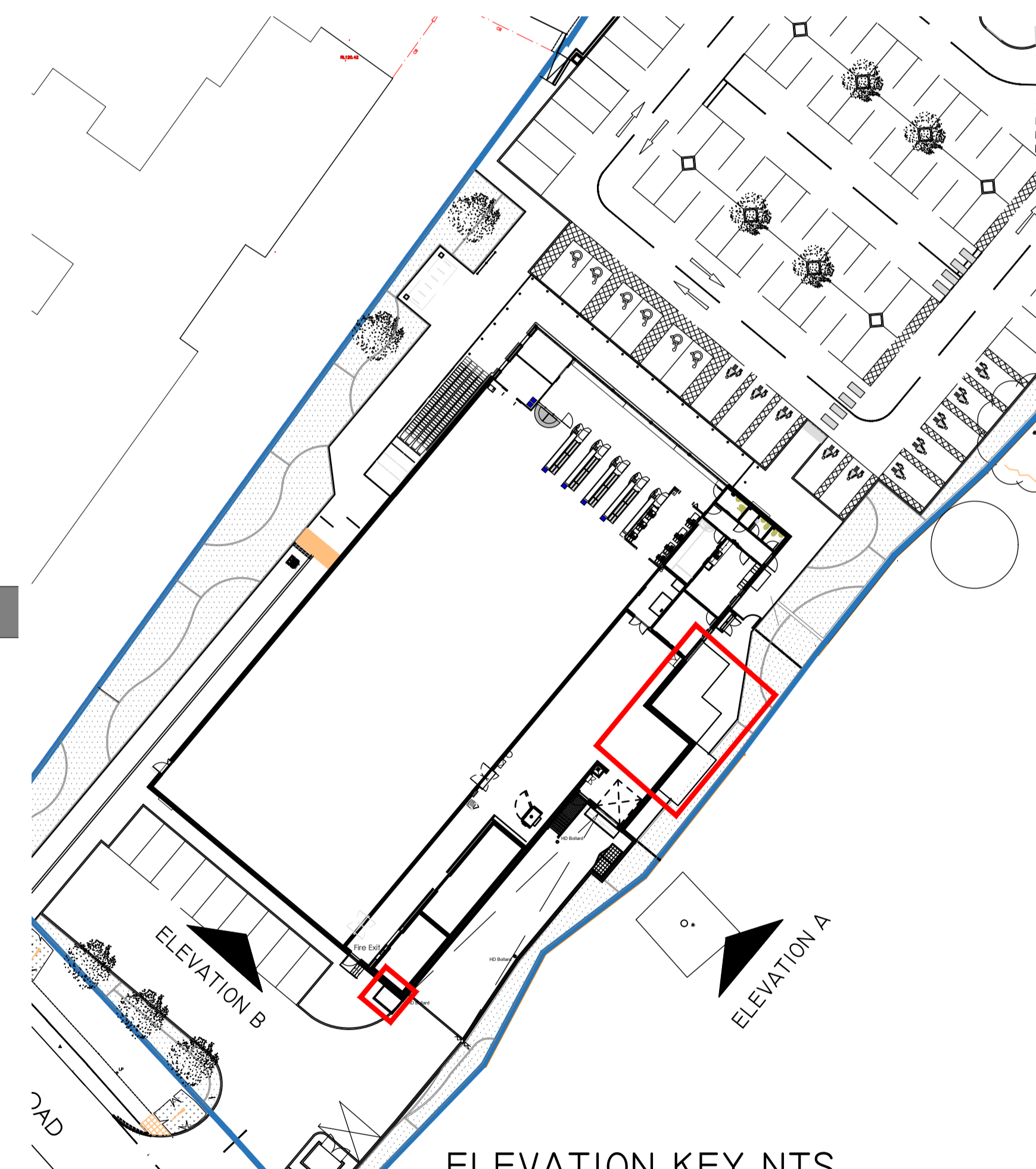
| Rev | Date | Description | Drawn | Chk'd |
|-----|----------|--|-------|-------|
| P1 | 04.03.24 | ISSUE FOR PERMIT | JM | JK |
| P2 | 20.02.24 | UPDATED TO COMMENTS | JM | JK |
| P3 | 04.03.24 | ADDP ASSIGNED WITH LATEST PLANT LAYOUT | JM | JK |



ELEVATION A
1:100



ELEVATION B
1:100



ELEVATION KEY NTS



PLANT

TENDER DRAWING
This drawing has been prepared for assist the Contractor in preparing a Design and Build Tender and is not intended to be a final Construction Drawing. All details shown are subject to design development.
For Structural details refer to the Structural & Civil Engineers detailed design drawings & specifications.
For M&E information refer to the M&E Engineers and sub contractor's design drawings & specifications.
Do not scale from this drawing. Verify all dimensions and setting out on site. Notify any discrepancies for the architect. For Health & Safety information, refer to the Designers Risk Assessment. This drawing is copyright and may not be reproduced in whole or part without written authority.



www.harrispartnership.com

Wakefield Manchester Milton Keynes Reading London Harrogate

Client

ALDI STORES LTD



Project Title
PROPOSED CO2 UPGRADE

SHREWSBURY ROAD
OSWESTRY
SY11 2RT

Drawing Title
PROPOSED ELEVATION

| Drawn | Checked | Scale | Block | Status | Date |
|-------|---------|-------|-------|--------|----------|
| JM | JK | 1:100 | SO | SO | FEB 2024 |

| Drawing Status | Rev. | THP Project No. |
|----------------|------|-----------------|
| PRELIMINARY | P3 | 20106 |

| Project No. | Originator | Volume | Level | Type | Role | Number |
|-------------|------------|--------|-------|------|------|--------|
| | THPM | XX | XX | DR | A | 306 |