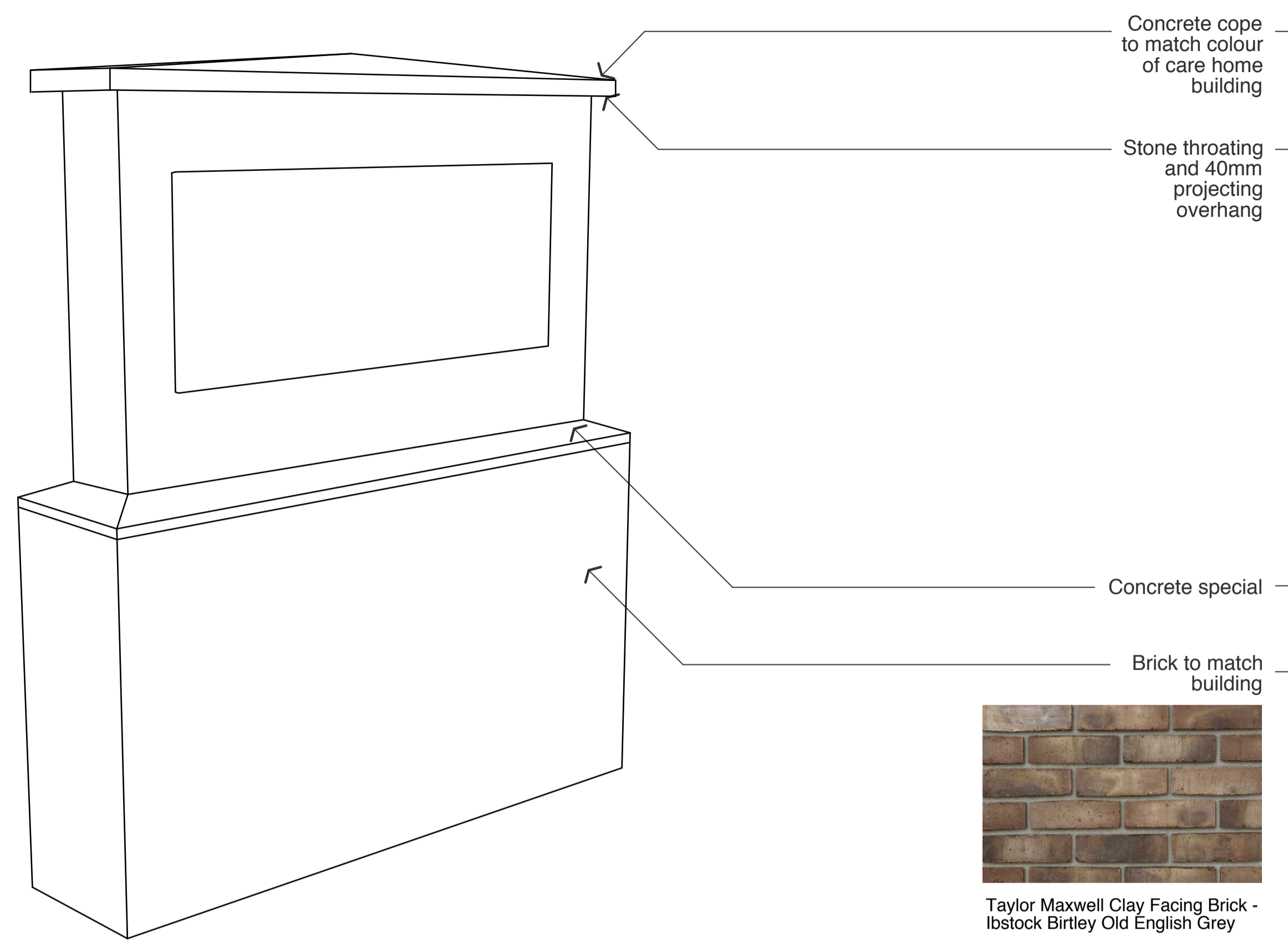
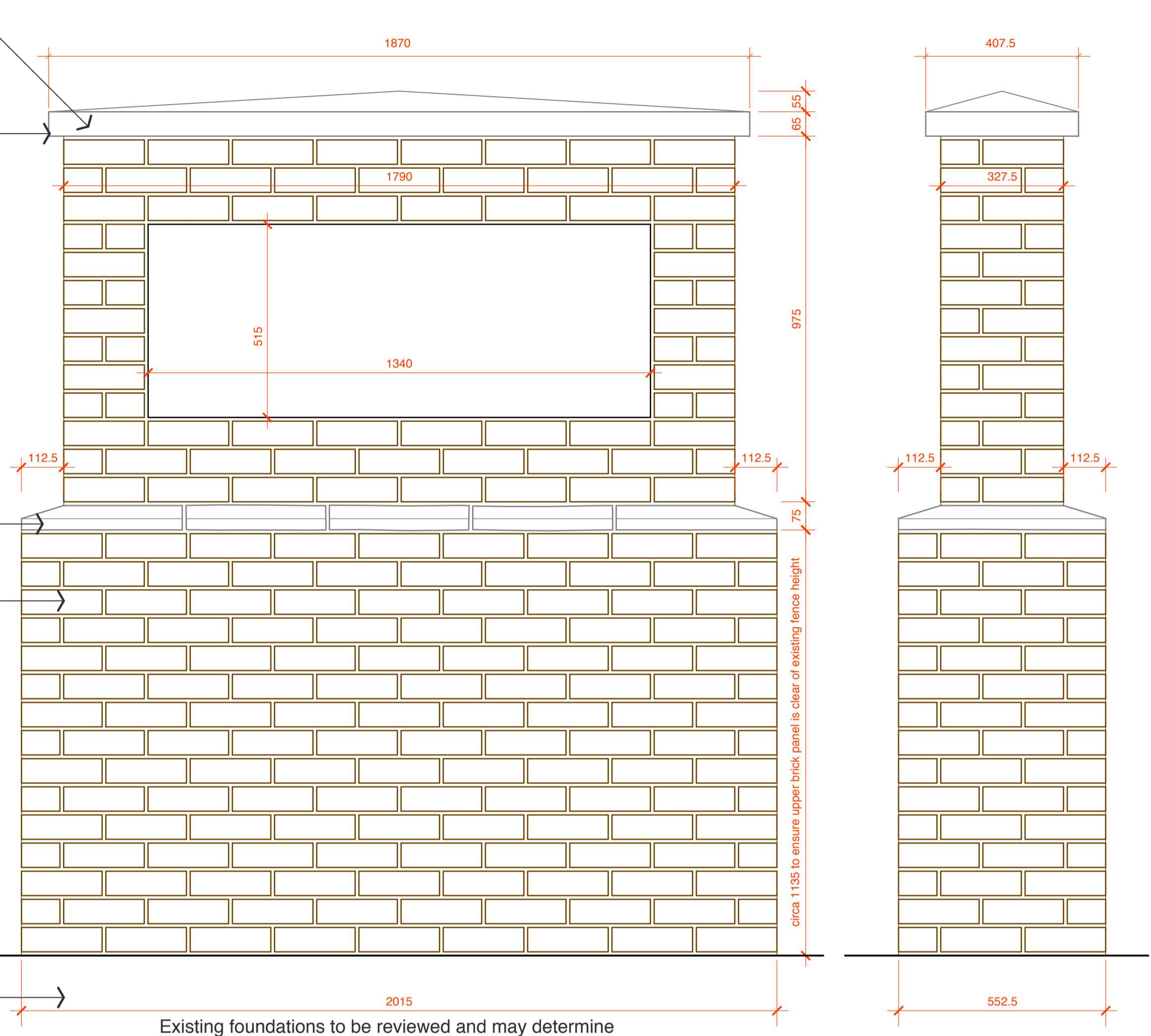


NOTES
 COPYRIGHT ROBERT POTTER & PARTNERS LLP 2022
 DO NOT SCALE DIMENSIONS FROM THIS DRAWING. ALL DIMENSIONS, INCLUDING FIGURED DIMENSIONS, TO BE CHECKED ON SITE PRIOR TO COMMENCING ANY WORKS



Axonometric 'impression'
N.T.S

Note: Entrance sign to have lighting - to be reviewed

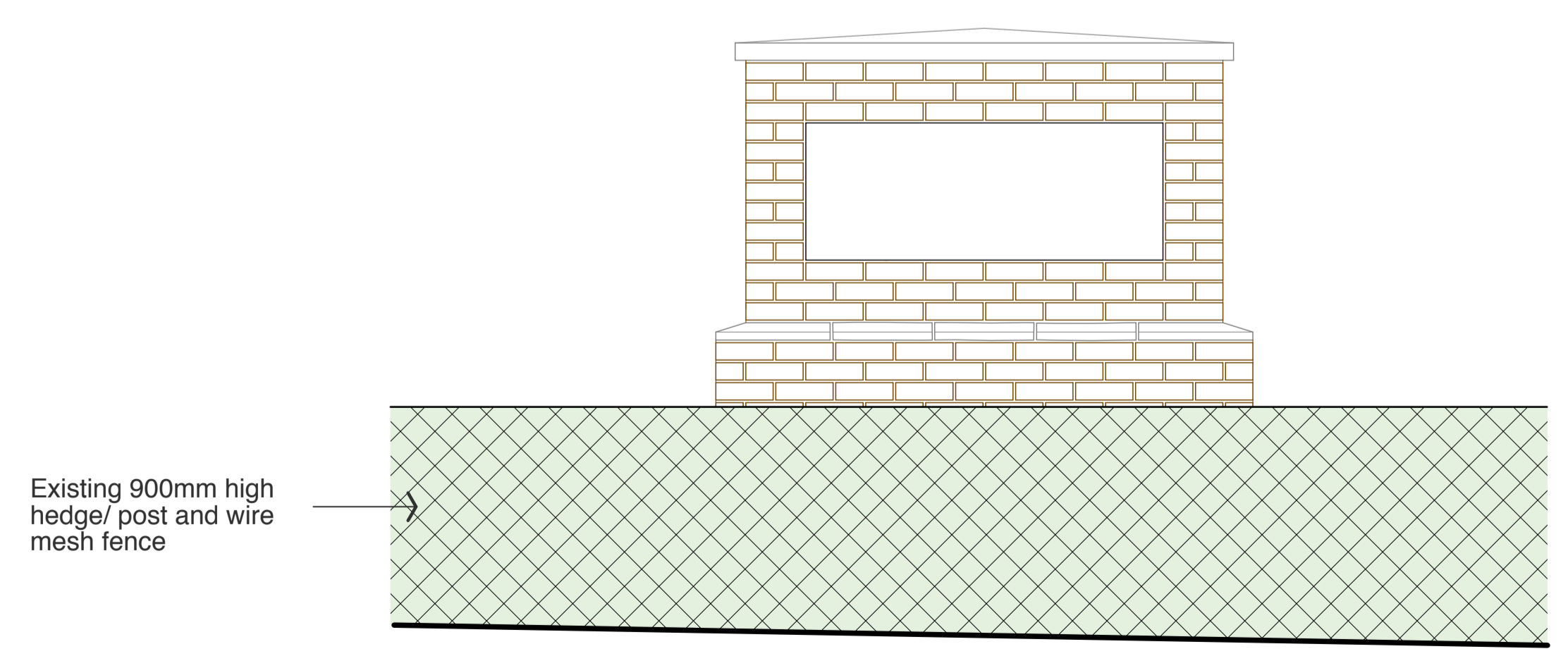


Front Elevation
1:10

Side Elevation
1:10

Foundations by Structural Engineer - to be reviewed

Existing foundations to be reviewed and may determine sign size to avoid clash with adjacent tree RPA



Front Elevation
Entrance
1:20



Partial Plan
Entrance
1:200

REVISIONS & ADDITIONS	DATE	BY

CONSTRUCTION

PROJECT
 Priory CC17 Limited,
 Proposed Care Home at Ancaster
 House, Crieff.

DRAWING TITLE
 Entrance Sign as Existing

ROBERT POTTER & PARTNERS
 CHARTERED ARCHITECTS & PROJECT MANAGERS

7 MILLER ROAD, AYR KAT 2AX 01292 - 261228
 51 NEWALL TERRACE, DUMFRIES DG1 1LN 01387 - 255509
 110 WEST GEORGE STREET, GLASGOW G2 1QJ 0141-332 9111
 2 KINGDOM STREET, LONDON W2 6BD 020 3479 5931

SCALE	1:10, 1:20@A1	6390/305
DATE	Nov. 2022	
DRAWN BY	ARN	
CHECKED BY		REVISION