

Advice : HSL-240328135728-301 DO NOT ADVISE AGAINST

Your Ref: 24/00214/PLF

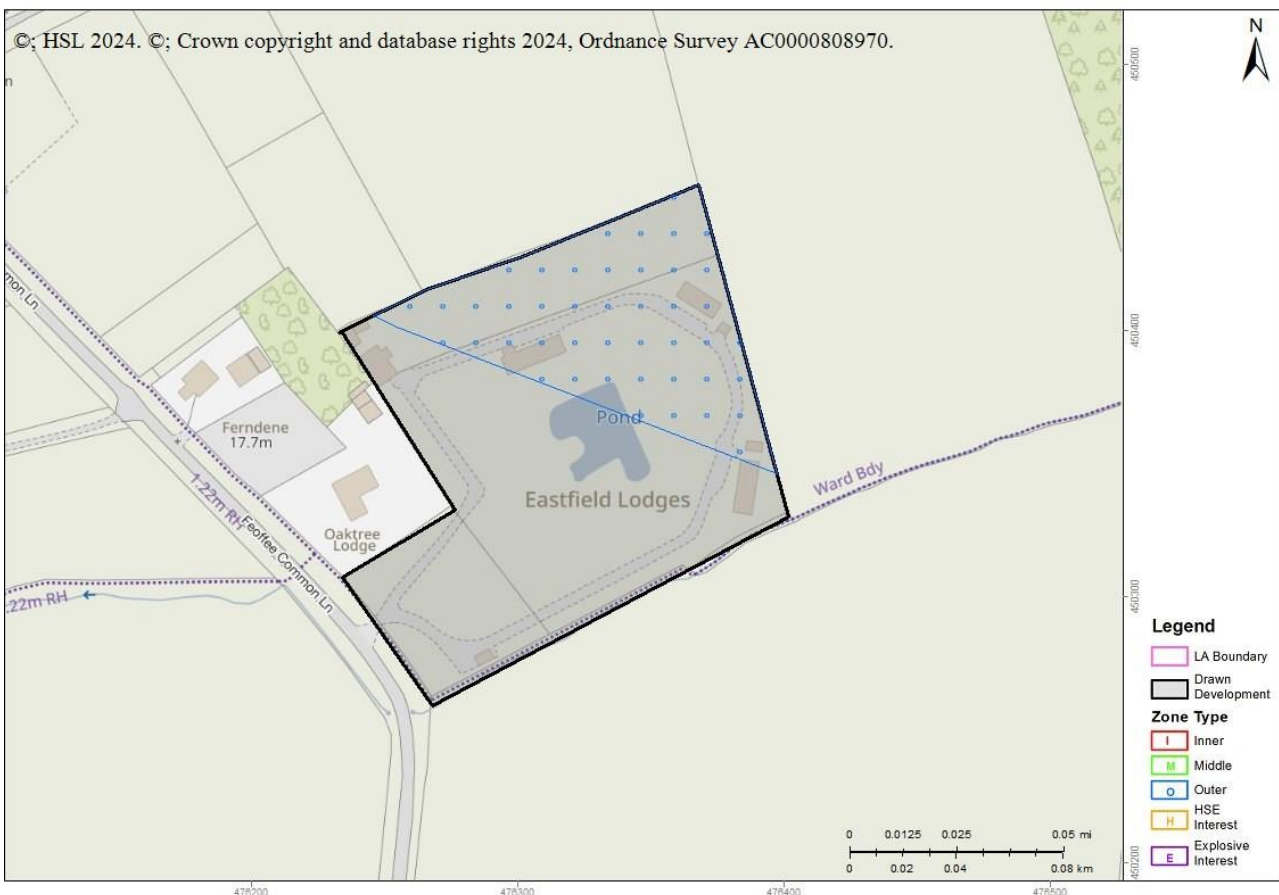
Development Name: Change of use of land for holiday use including erection of 2 holiday lodges, siting of 1 lodge, use of existing shed as bin store, excavation of a lake, internal access roads and landscaping works (retrospective), and siting of 2 additional holiday lodges and erection of a staff facilities building with associated parking (Resubmission of 23/00896/PLF)

Comments: Eastfield Feoffee Common Lane Barnby Moor East Riding Of Yorkshire YO42 1PG

Land Use Planning Consultation with Health and Safety Executive [Town and Country Planning (Development Management Procedure) (England) Order 2015, Town and Country Planning (Development Management Procedure) (Wales) Order 2012, or Town and Country Planning (Development Management Procedure) (Scotland) Regulations 2013]

The Health and Safety Executive (HSE) is a statutory consultee for certain developments within the Consultation Distance of Major Hazard Sites/ pipelines. This consultation, which is for such a development and is within at least one Consultation Distance, has been considered using HSE's planning advice web app, based on the details input on behalf of East Riding of Yorkshire.

HSE's Advice: Do Not Advise Against, consequently, HSE does not advise, on safety grounds, against the granting of planning permission in this case.

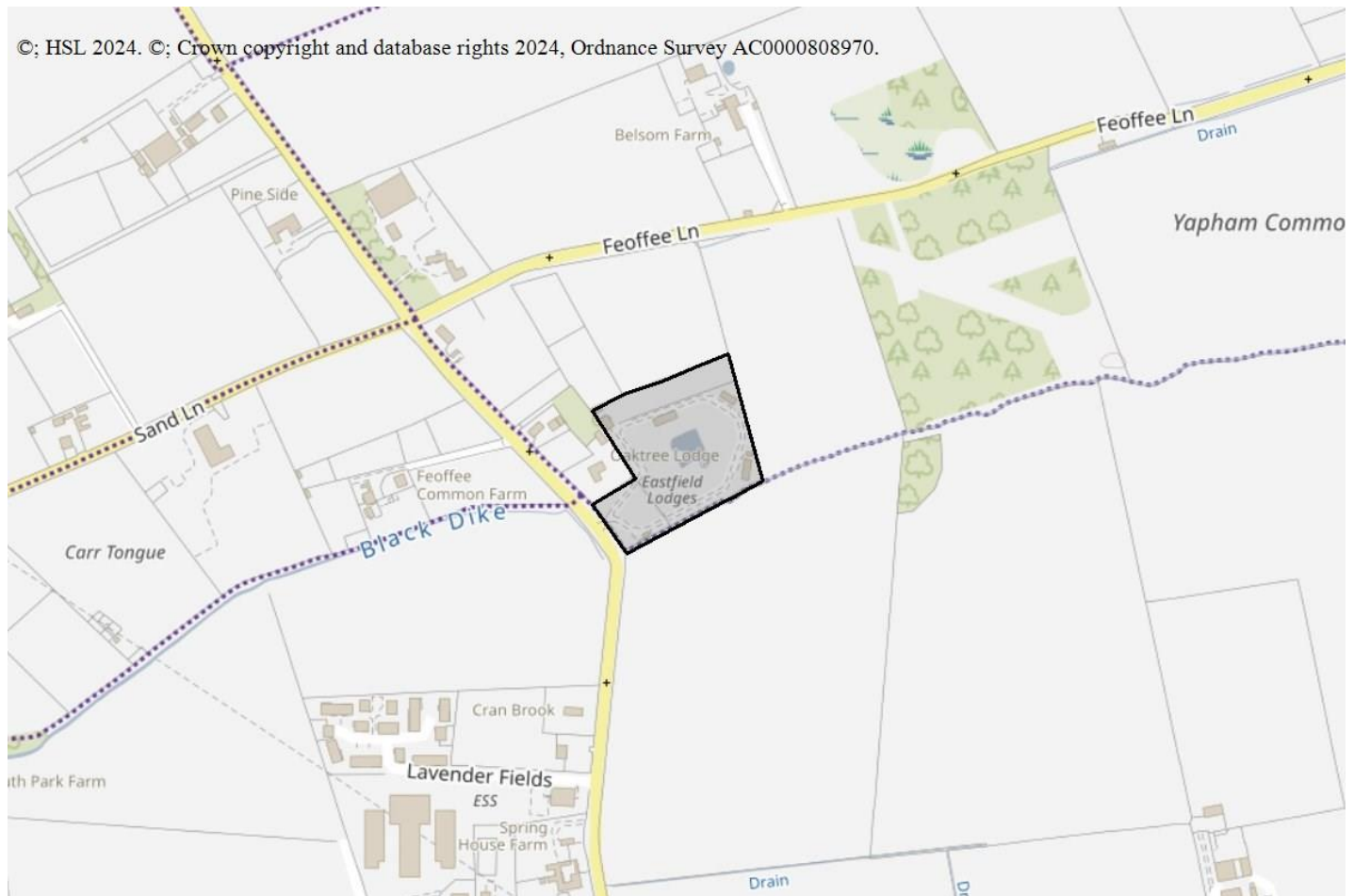


Breakdown:

Hotel Hostel Holiday Accommodation : Do Not Advise Against

Is the accommodation for caravans and/or tents? Yes

How many caravans and/or tents is the accommodation for (that lie partly or wholly within a consultation distance)? 3 to 33 inclusive



Pipelines

- 9669_ Ineos Manufacturing (Hull) Limited

As the proposed development is within the Consultation Distance of a major hazard pipeline you should consider contacting the pipeline operator before deciding the case. There are two particular reasons for this:

- The operator may have a legal interest (easement, wayleave etc.) in the vicinity of the pipeline. This may restrict certain developments within a certain proximity of the pipeline.
- The standards to which the pipeline is designed and operated may restrict occupied buildings or major traffic routes within a certain proximity of the pipeline. Consequently there may be a need for the operator to modify the pipeline, or its operation, if the development proceeds.

HSE's advice is based on the situation as currently exists, our advice in this case will not be altered by the outcome of any consultation you may have with the pipeline operator.

This advice report has been generated using information supplied by Janet Holden at East Riding of Yorkshire on 28 March 2024.

Note that any changes in the information concerning this development would require it to be re-submitted.

