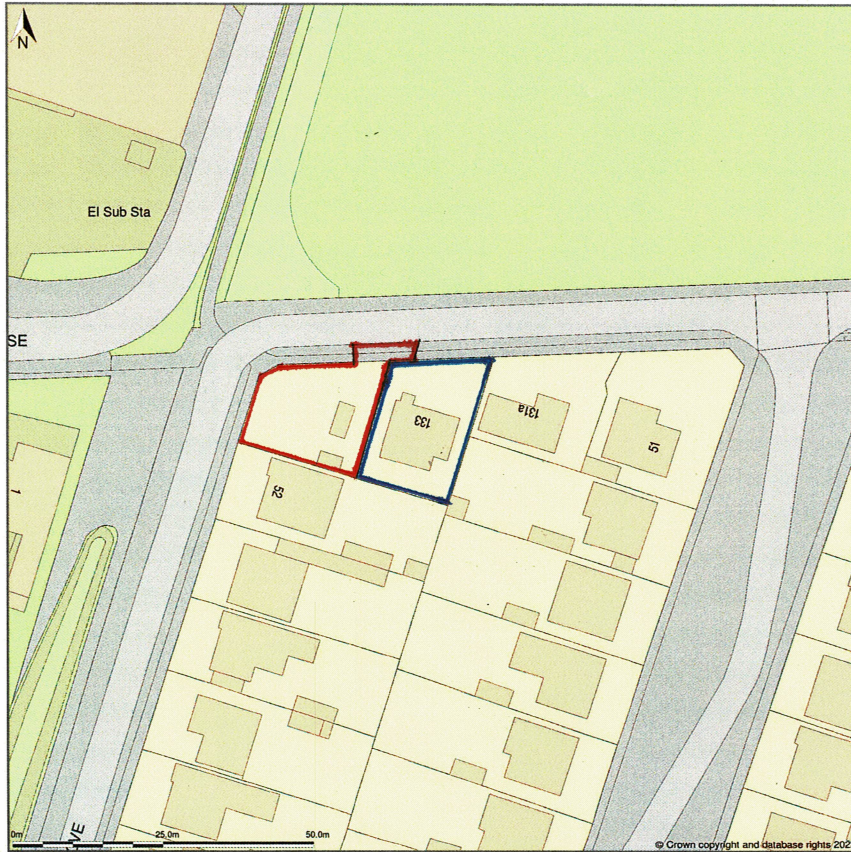


133, Harrow Way, Andover, Hampshire, SP10 3DY



Location Plan shows area bounded by: 434518.27, 146334.2 434659.69, 146475.63 (at a scale of 1:1250), OSGridRef: SU34584640. The representation of a road, track or path is no evidence of a right of way. The representation of features as lines is no evidence of a property boundary.

Produced on 20th Dec 2023 from the Ordnance Survey National Geographic Database and incorporating surveyed revision available at this date. Reproduction in whole or part is prohibited without the prior permission of Ordnance Survey. © Crown copyright 2023. Supplied by [www.buyaplan.co.uk](http://www.buyaplan.co.uk) a licensed Ordnance Survey partner (100053143). Unique plan reference: #00868197-1B62DF.

Ordnance Survey and the OS Symbol are registered trademarks of Ordnance Survey, the national mapping agency of Great Britain. Buy A Plan<sup>®</sup> logo, pdf design and the [www.buyaplan.co.uk](http://www.buyaplan.co.uk) website are Copyright © Passinc Ltd 2023.