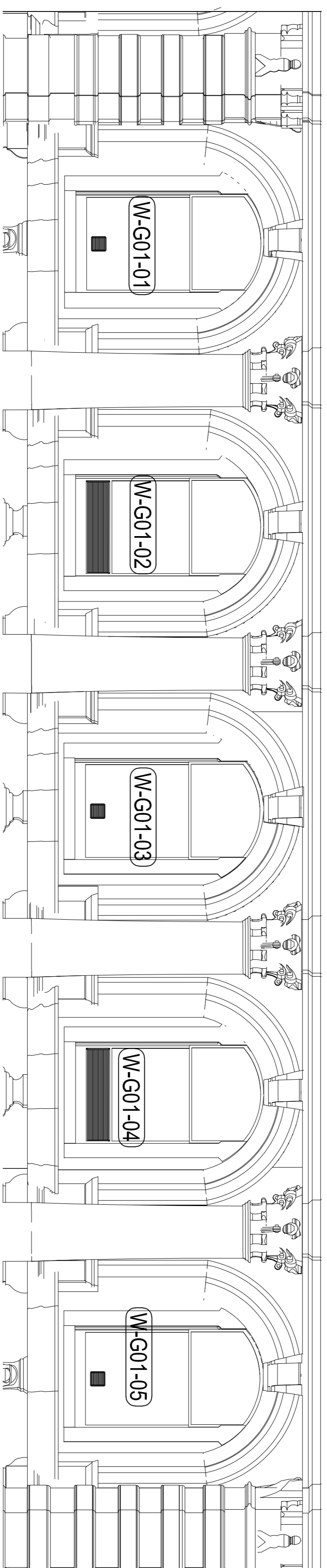


Elevation to existing sash and case windows in changing areas and WC's below stage Scale 1:50



Elevation to proposed sash and case windows in changing areas and WC's below stage Scale 1:50

Replacement double glazed windows, sized to match existing to be supplied by-
 Preservation Windows
 124 Great Western Road,
 Glasgow,
 G4 9AD
 All dimensions must be confirmed, by window manufacturer.
 Maximum tolerance 12mm.
 U value to be 1.8 W/m²K

toilets behind the town hall stage.
 The ceiling to each of the three rooms features a sloped internal soffit at the ceiling to the window head as shown. The contractor may, if required, carefully remove internal timber facings and bulkhead to permit sufficient access to fit the new windows. CA to be consulted prior to any downtakings. Contractor must make good finishes after window installation.

Note- Existing sash and case windows feature sash chains rather than chords.

Windows to be supplied by-
 Preservation Windows
 124 Great Western Road,
 Glasgow,
 G4 9AD
 All dimensions must be confirmed, by window manufacturer. Maximum tolerance 12mm.

Schedule Number Key:

(W-G01-1)
 Component (window)
 Level & Room / space tag
 Component number

Level Prefix:
 B - Basement
 G - Ground Floor
 F - First Floor

Please read with drawing AC(31)006.

Read with NBS Sections:
 L10 Windows / Screens
 L20 Doors
 M60 Paint
 P21 Ironmongery

1100



Arched timber inserts to window sash

Sash chains to pulleys

2715

Hole formed between panes with sealed cavity spacer to suit size instructed by Mechanical Engineer. Temporary weather sealed cover plate to be fitted over opening to accommodate follow-on installation of extract fan.

175 Moulded architraves

Internal elevation to W-G01-01, W-G01-03 and G-WG01-05 sash and case windows. Scale 1:10

1100



Arched timber inserts to window sash

Sash chains to pulleys

2715

Lower sash to accommodate a full width louvre to comply with Mechanical Engineers instructions. Louvre to be fitted into opening with back box to accommodate shower room extract fan and rear changing area extract.

175 Moulded architraves

Internal elevation to windows W-G01-02 and W-G01-04 Scale 1:10

2. No windows to feature louvres as shown
 March 24 18
 Rev: 0000 1:50

Inverclyde
 council
 Environment, Regeneration and Resources
 Eddie Montgomery BSc MRICS,
 Interim Head of Property Services,
 107 Dalrymple Street,
 Greenock,
 PA15 1HU

Client:
 Property Services

Project:
 Greenock Town Hall
 Roofing & window replacement

Project No:
 21-089
 Dwg No:
 AC(31)007
 Rev:
 A

Drawing Title:
 Window replacement
 interior first floor

Status:
 Planning

Drawn: WB Date: July 2023
 Checked: A1 Scale: 1:50