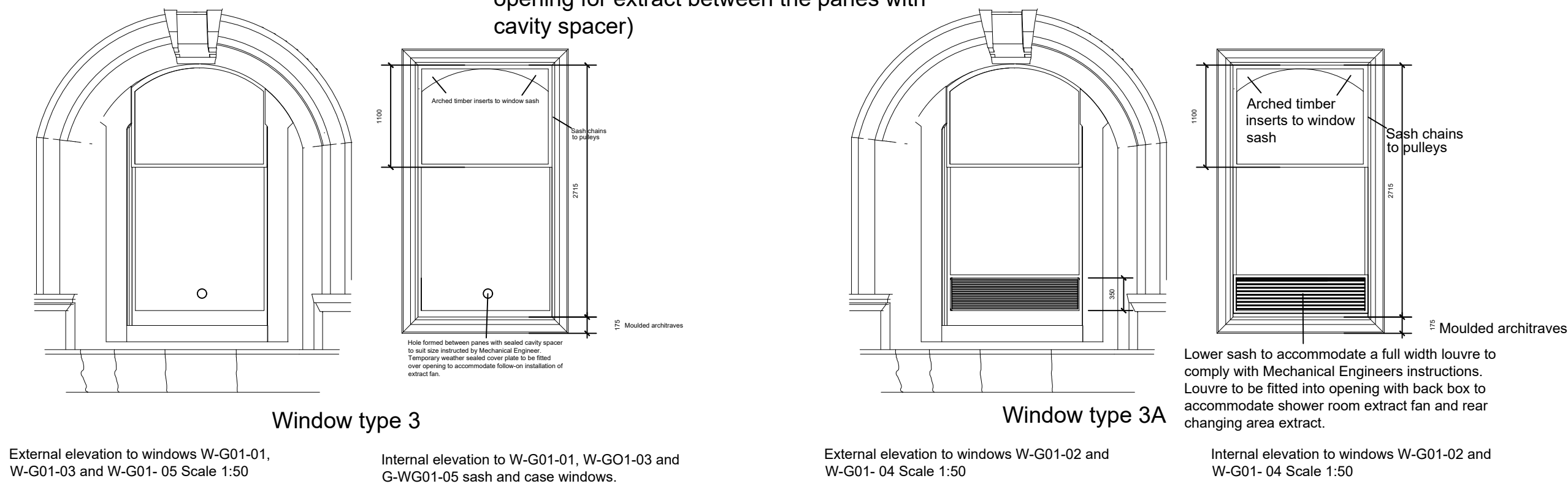


Replacement double glazed windows, sized to match existing to be supplied by-  
Preservation Windows  
124 Great Western Road,  
Glasgow,  
G4 9AD  
All dimensions must be confirmed.  
by window manufacturer.  
Maximum tolerance 12mm.  
U value to be 1.8 W/m²K.

Note- Existing sash and Case windows feature sash chains rather than chords.

Window type 3 and 3A Note- See drawing AC(31)007  
(Fixed windows with suitably sized circular opening for extract between the panes with cavity spacer)



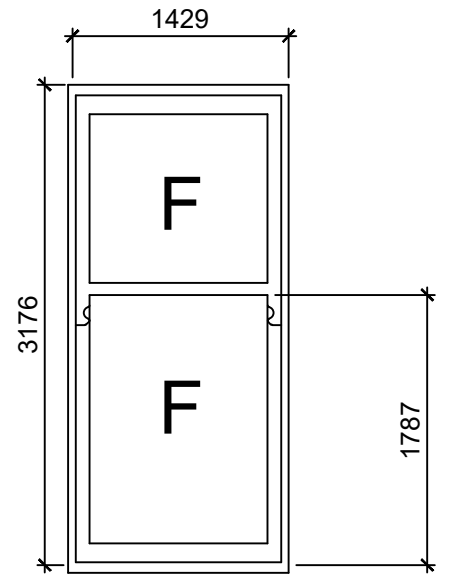
Window type 3  
External elevation to windows W-G01-01, W-G01-03 and W-G01-05 Scale 1:50  
Internal elevation to W-G01-01, W-G01-03 and G-WG01-05 sash and case windows.

Window type 3A  
External elevation to windows W-G01-02 and W-G01-04 Scale 1:50  
Internal elevation to windows W-G01-02 and W-G01-04 Scale 1:50

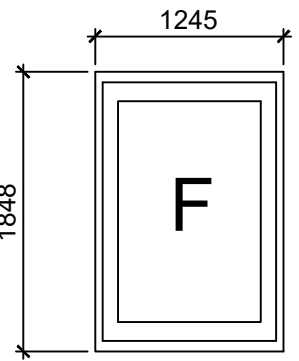
Internal and external elevation to changing room sash and case windows Scale 1:50

Internal and external elevation to changing room sash and case windows Scale 1:50

Window type 1  
(Box sash and case)  
W-F01-01, W-F01-05 to stairwells

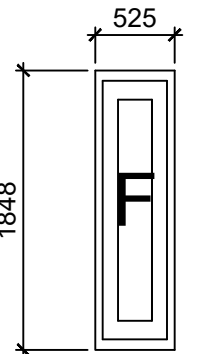


Window type 2  
(Fixed windows)  
W-F01-02, W-F01-03, W-F04 to stage.



Window type 4  
(Fixed window, 1 hr fire rated glass)

W-B01-01,  
W-B01-02



Window type 5  
(Fixed window, 1 hr fire rated glass)

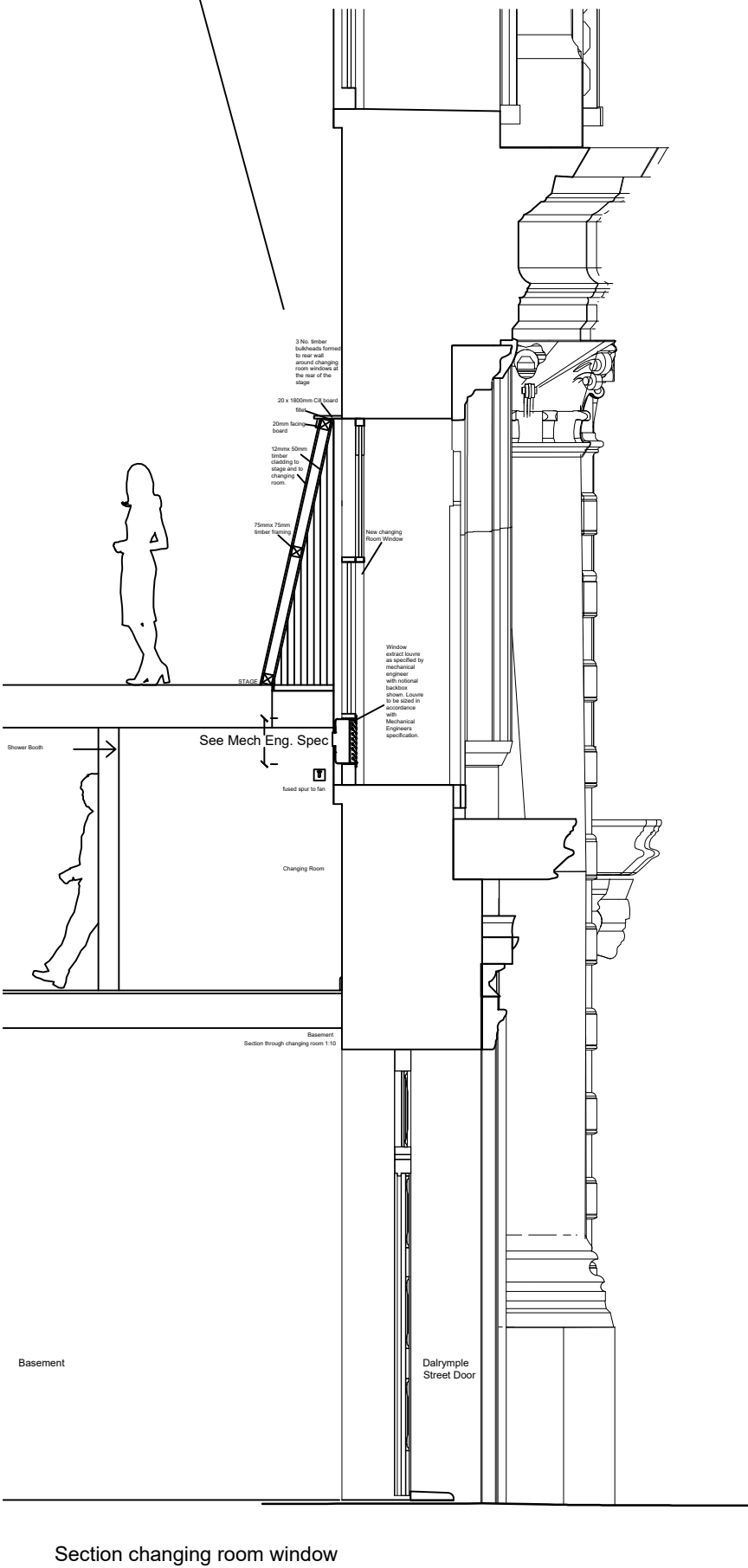
W-B02-01, W-B02-02, W-B02-03, W-B02-04,  
W-B02-05, W-B02-06.

New double glazed windows to be supplied by-  
Preservation Windows  
124 Great Western Road,  
Glasgow,  
G4 9AD  
All dimensions must be confirmed.  
by window manufacturer.  
Maximum tolerance 12mm.  
U value to be min 1.8W/m²K.

Window type 3  
(Box sash and case)

W-G01-02, W-G01-03, W-G04

Each window above serves changing rooms and toilets behind the town hall stage.  
The ceiling to each of the three rooms features a sloped internal soffit at the ceiling to the window head as shown. The contractor may, if required, carefully remove internal timber facings and bulkhead to permit sufficient access to fit the new windows. CA to be consulted prior to any down takings. Contractor must make good finishes after window installation.

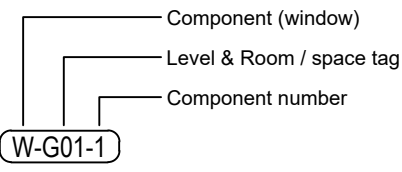


Section changing room window

Contractor To carefully remove existing external metal mesh protective cage and refurbish. Brush off existing coatings and remove all oxidation, recoat using oil-based primer and two coats of oil based metal paint with fade-in protection.

Windows to be supplied by-  
Preservation Windows  
124 Great Western Road,  
Glasgow,  
G4 9AD  
All dimensions must be confirmed. by window manufacturer. Maximum tolerance 12mm.

Schedule Number Key:



Level Prefix:  
B - Basement  
G - Ground Floor  
F - First Floor

Please read with drawing AC(31)006.

Read with NBS Sections:  
L10 Windows / Screens  
L20 Doors  
M60 Paint  
P21 Ironmongery

**Inverclyde council**  
Environment, Regeneration and Resources  
Eddie Montgomery BSc MRICS,  
Interim Head of Property Services,  
107 Dalrymple Street,  
Greenock,  
PA15 1HU

Client:

Property Services

Project:

Greenock Town Hall  
Reroofing & window replacement

Project No:

21-089

Dwg No:

AC(31)004

Rev:

C

Drawing Title:

Window replacement  
Sheet 1

Status:

Planning

Drawn:

WB

Date:

July 2023

Checked:

A1 Scale: 1:50