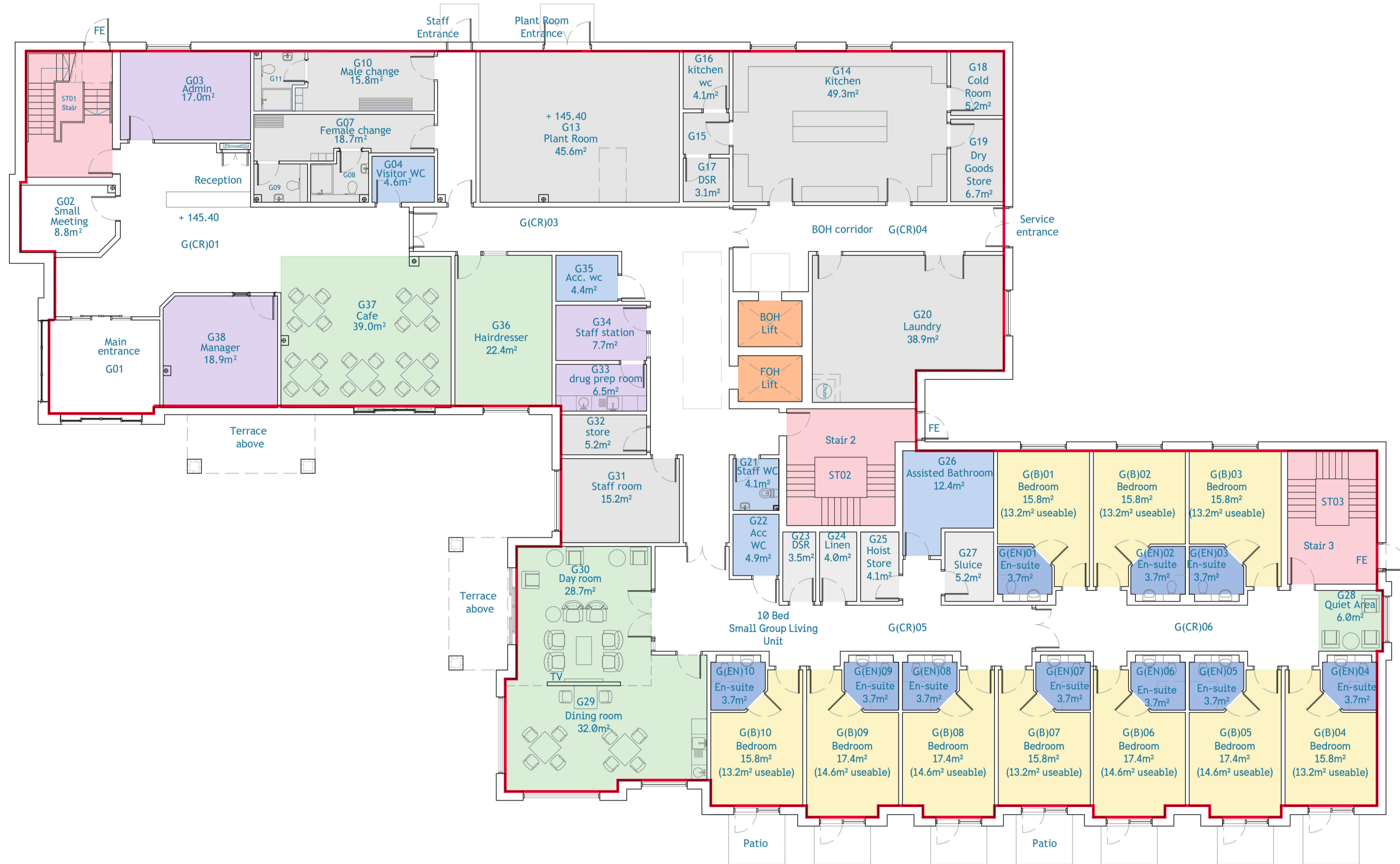


This copy has been made by or with the authority of Midlothian Council pursuant to Section 47 of the Designs and Patents Act 1988. Unless that Act provides a relevant exception to copyright, the copy must not be copied without the prior permission of the copyright owner.



Revision A	01.03.23
by MP	
+ Changes as per Client's comments.	
Revision B	08.03.23
by MP	
+ Changes as per Client's comments.	
Revision C	24.03.23
by MP	
+ Changes as design development.	
Revision D	31.03.23
by MP	
+ Overall building width reduced.	
Revision E	19.04.23
by MP	
+ Manager room and visitor WC changed.	
+ Sheet size updated.	
Revision F	06.03.24
by SI	
+ Balcony size increased, patio access doors indicated.	
Revision G	15.03.24
by SI	
+ Entrance area and levels revised	



DRAWING LEGEND	
GIA area on Plan	
Ground Floor GIA:	1004m ²
First Floor GIA:	966m ²
Second Floor GIA:	960m ²
Total GIA:	2930m ²
GIA per Resident:	58.60m ²

planform

PROPOSED 50 BED CARE HOME
HAWTHORN GARDENS
LOANHEAD

PROPOSED GROUND FLOOR PLAN

DWG NO. 173-300 REV. G

SCALE 1:100 SIZE A1

DWN BY MP CHECK BY SD

© PLANFORM ARCHITECTS LTD
CENTRUM BUILDING, 38 QUEEN STREET, GLASGOW, G1 3JX

Planform Architects accepts responsibility for this document only to the commissioning party and not to any other. Planform Architects do not accept liability for the accuracy or veracity of the survey information provided by others and used in the preparation of this drawing.

