

Revision A	16.05.23
By MW	+ ASHPs indicated.
Revision B	27.02.24
By SE	+ Roof profile, balcony size
Revision C	15.03.24
By SI	+ Made changes as per client's comments
Revision D	18.03.24
By SI	+ Made changes as per client's comments
Revision E	19.03.24
By SI	+ Amended rear elevation as per client's comments
Revision F	20.03.24
By SI	+ AHU location, parapet height amended

MATERIAL LEGEND

- ① FACING BRICK BUFF COLOURED
- ② CAST STONE
- ③ RENDER
- ④ GREY COLOURED UPVC TO WINDOWS AND DOORS
- ⑤ GLASS BALUSTRADE
- ⑥ CAST STONE CILL
- ⑦ MARLEY MODERN CONCRETE INTERLOCKING ROOF TILE (SMOOTH GREY)



ELEVATION A: South-West Elevation to Hawthorn Gardens (Front Elevation)
Scale- 1:100

This copy has been made by or with the authority of Midlothian Council pursuant to Section 47 of the Designs and Patents Act 1988. Unless that Act provides a relevant exception to copyright, the copy must not be copied without the prior permission of the copyright owner.



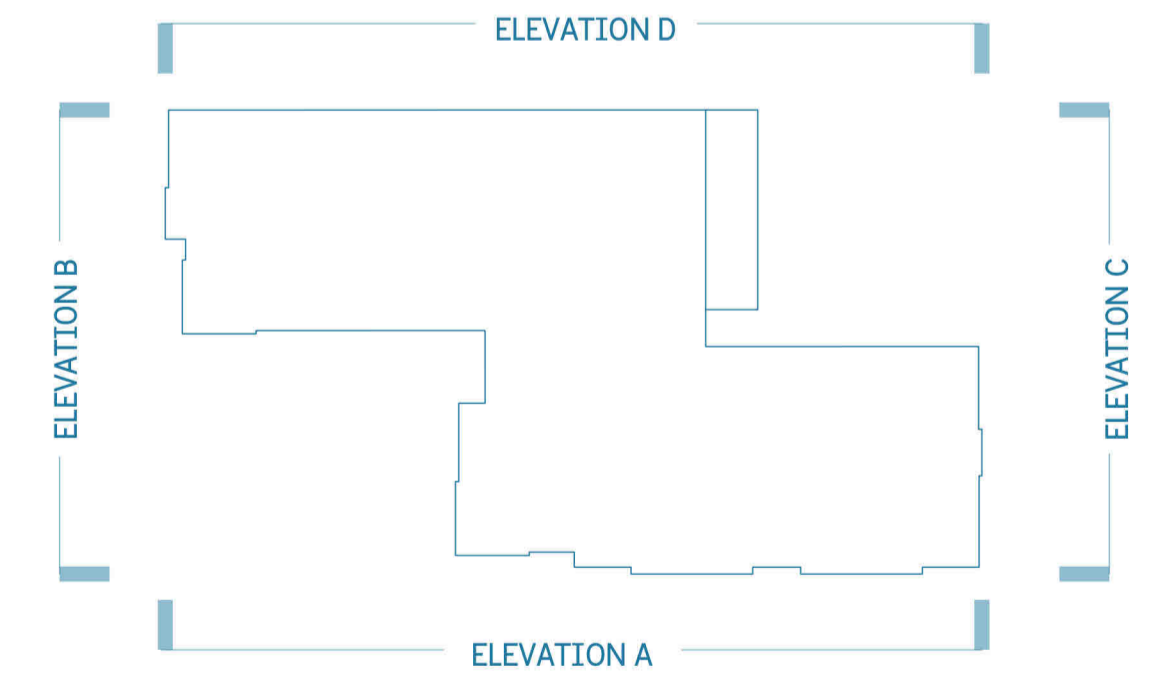
ELEVATION B: North-West Elevation (Left Elevation)
Scale- 1:100



ELEVATION C: South-East Elevation (Right Elevation)
Scale- 1:100



ELEVATION D: North-east Elevation (Rear Elevation)
Scale- 1:100



KEY PLAN
Scale- 1:500



PROPOSED 50 BED CARE HOME
HAWTHORN GARDENS
LOANHEAD

PROPOSED ELEVATIONS

DWG NO.	173-501	REV.	F
SCALE	1:100	SIZE	A1
DWN BY	MP	CHECK BY	SD



© PLANFORM ARCHITECTS LTD
CENTRUM BUILDING, 38 QUEEN STREET, GLASGOW, G1 3XJ
Planform Architects accepts responsibility for this document only to the commissioning party and not to any other. Planform Architects do not accept liability for the accuracy or veracity of the survey information provided by others and used in the preparation of this drawing.