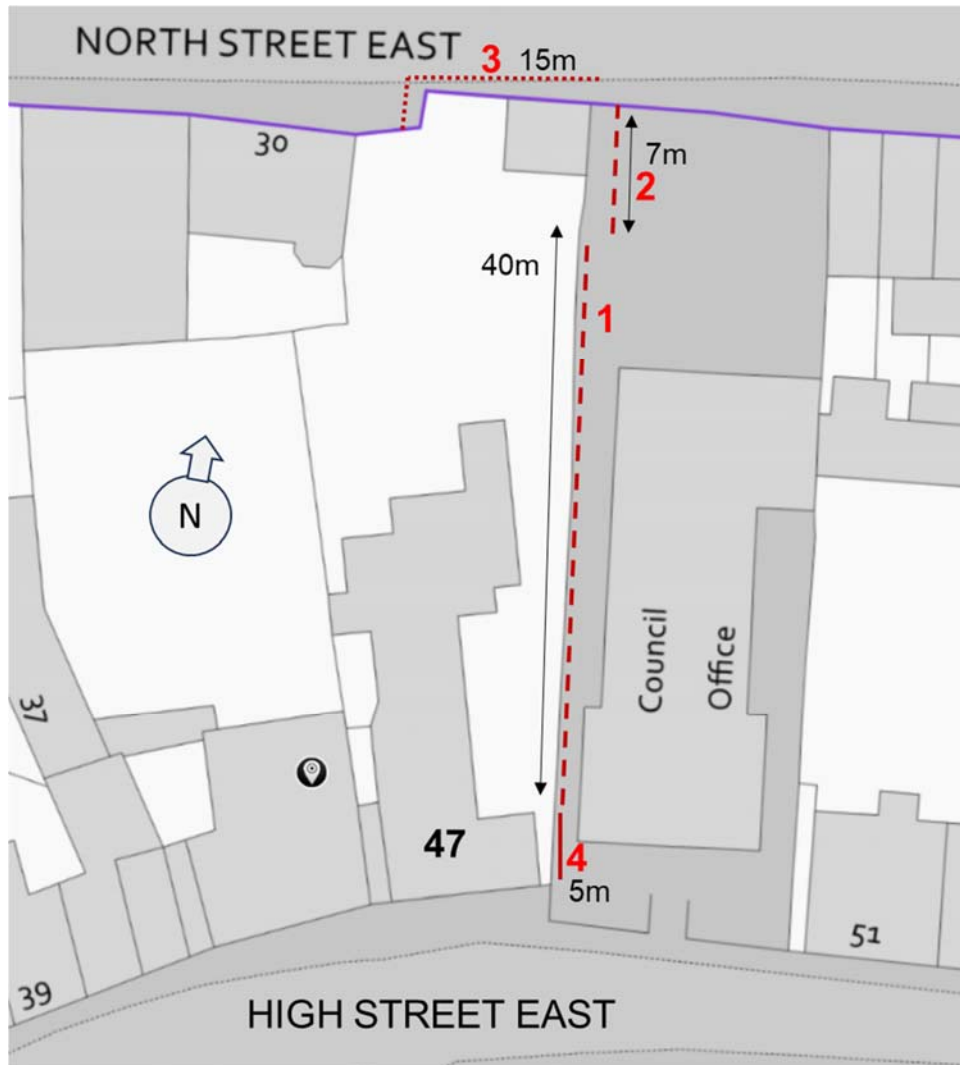


Plans & Drawings

Plan View of the Sites of Work

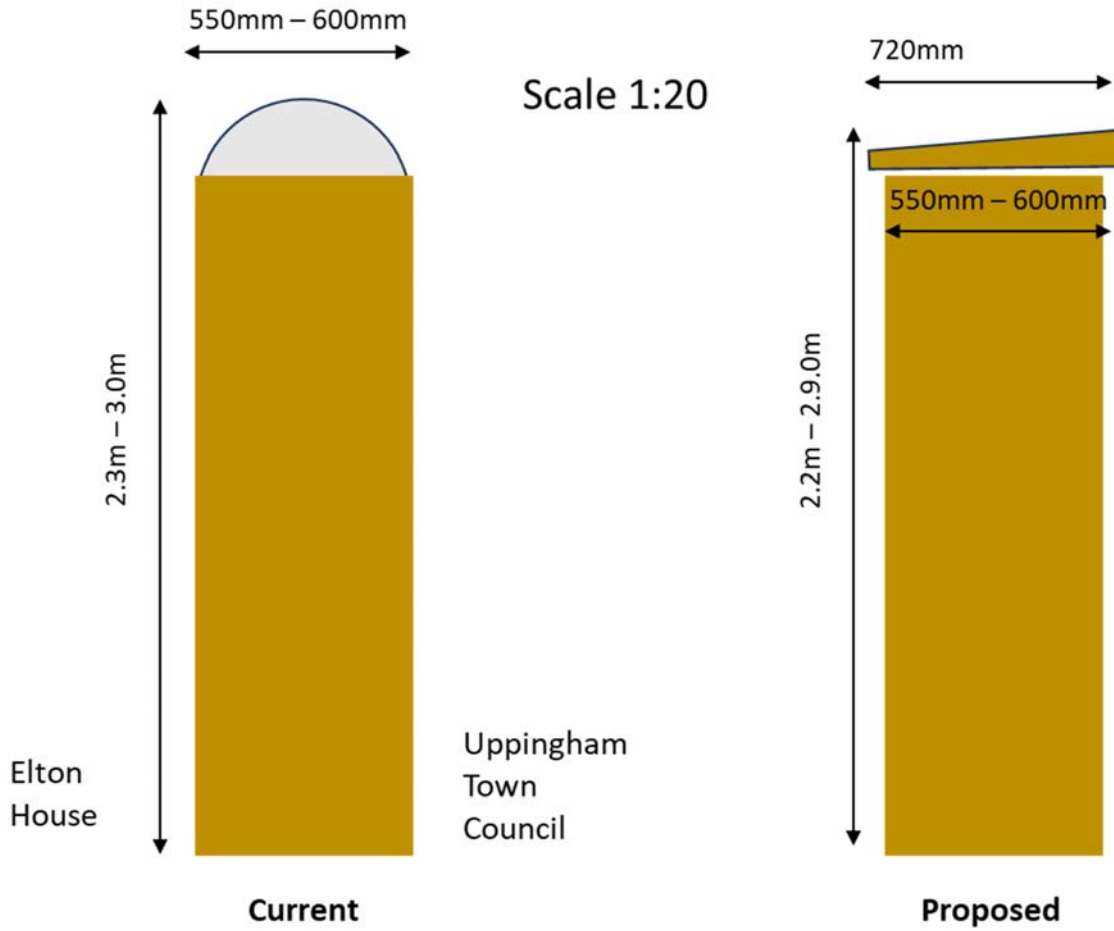


Work Part 1

Description:

Wall

- Remove existing pointing and replace with Lime Mortar
- Remove badly blown stone and replace with iron stone
- Remove wall capping of concrete / cement and replace with sandstone slabs.

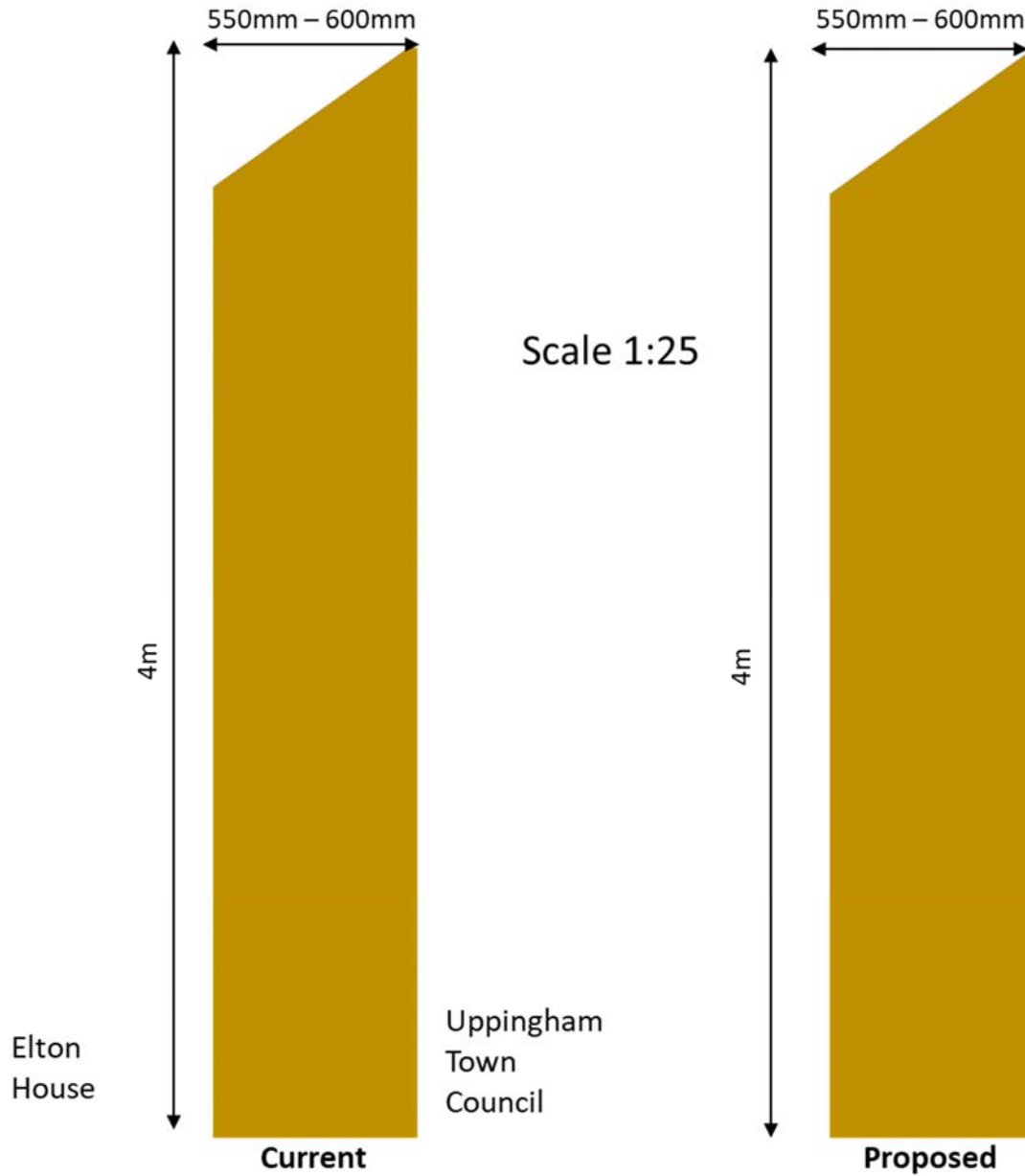


Work Part 2

Description:

Wall

- Remove existing pointing and replace with Lime Mortar
- Remove badly blown stone and replace with iron stone

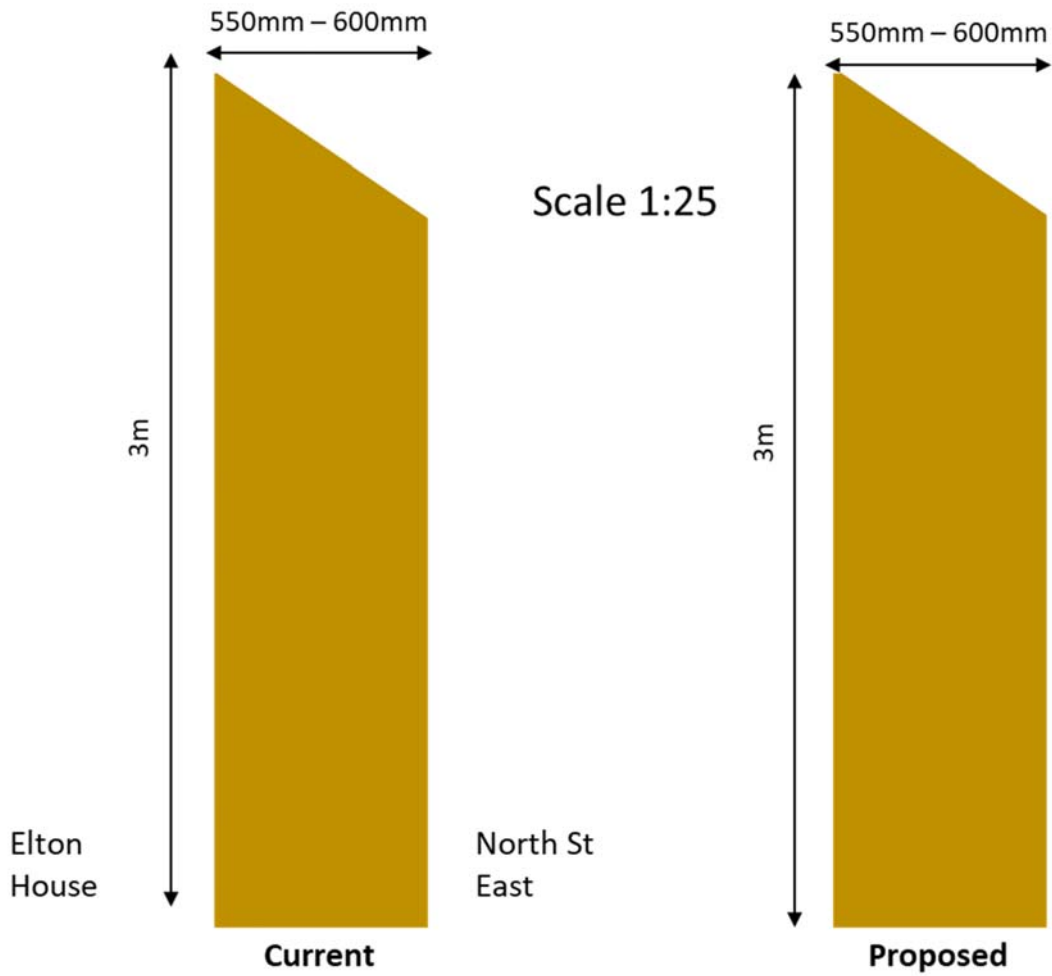


Work Part 3

Description:

Wall

- Remove existing pointing and replace with Lime Mortar
- Remove badly blown stone and replace with iron stone



Work Part 4

Description:

Gable

- Remove existing pointing and replace with Lime Mortar
- Remove badly blown stone and replace with iron stone
- Remove existing window and replace with like-for-like

