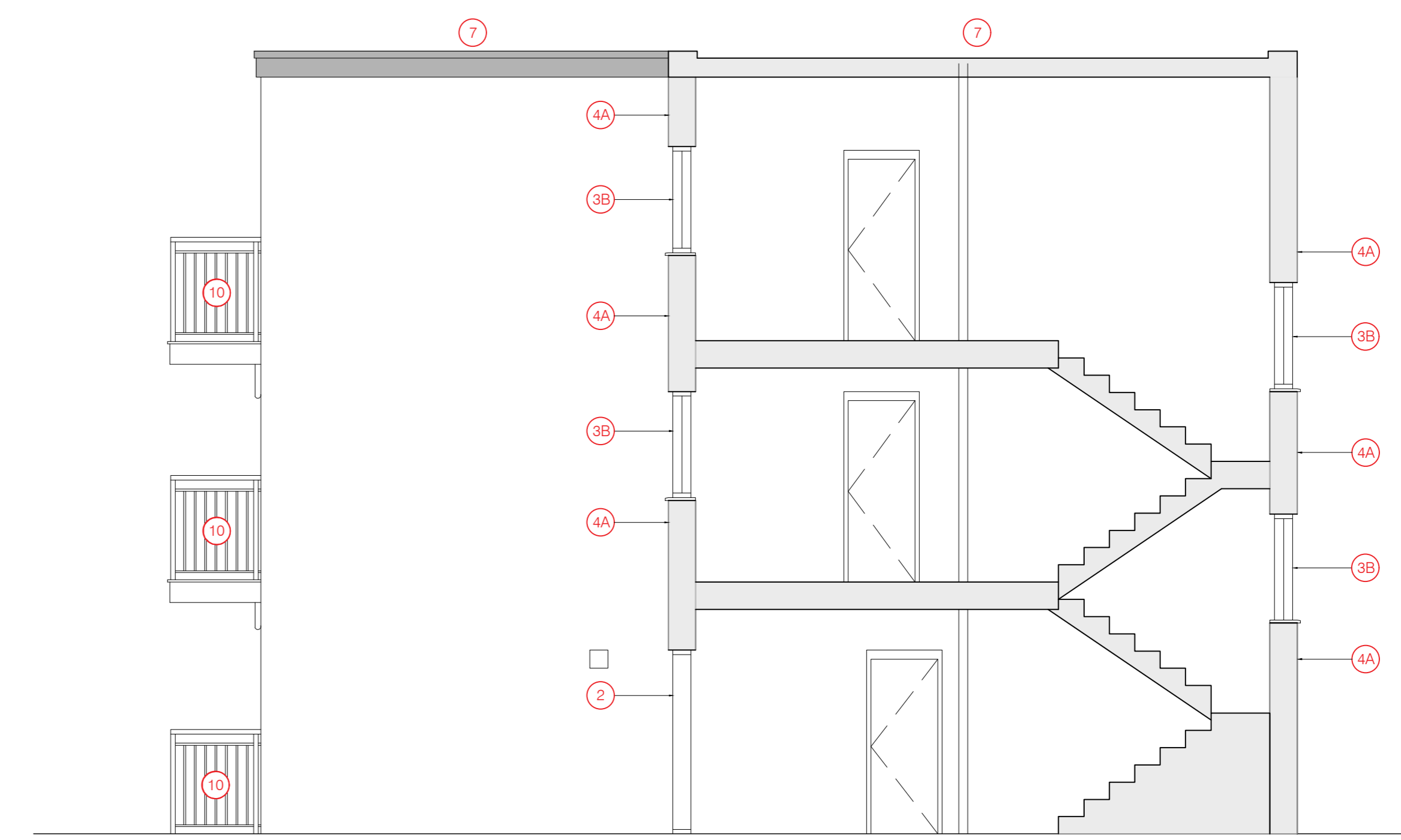
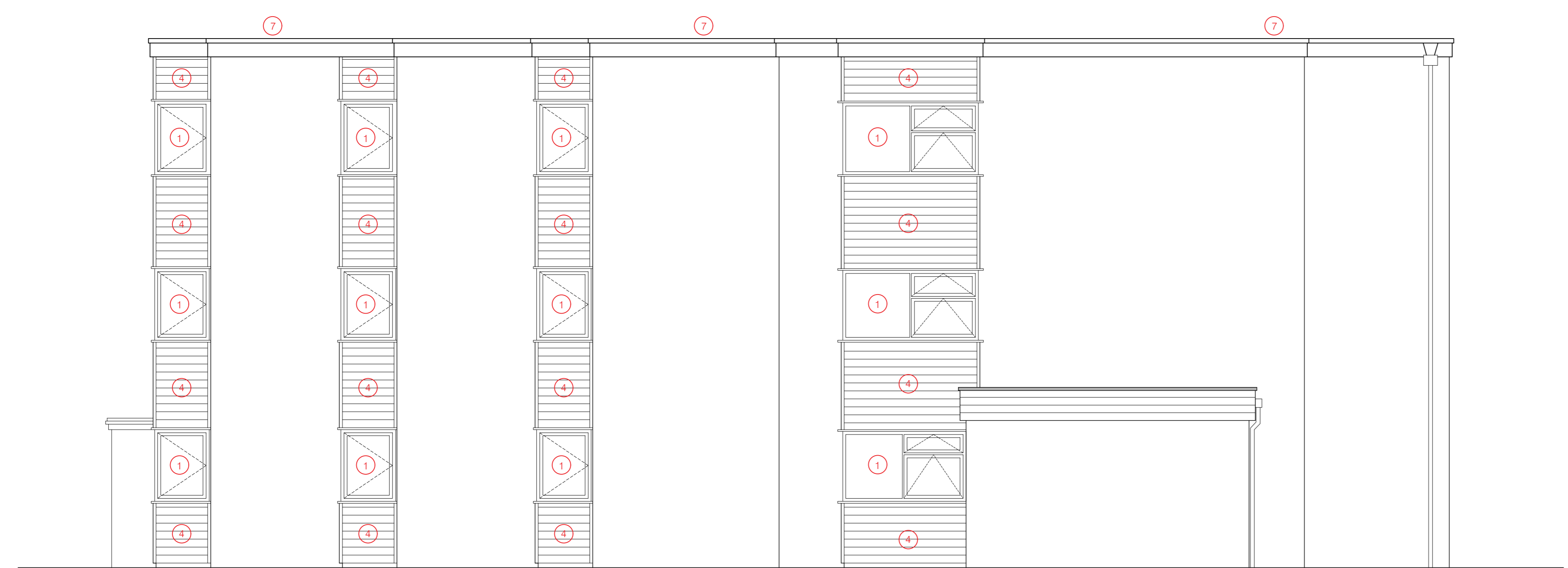


Proposed Elevation B



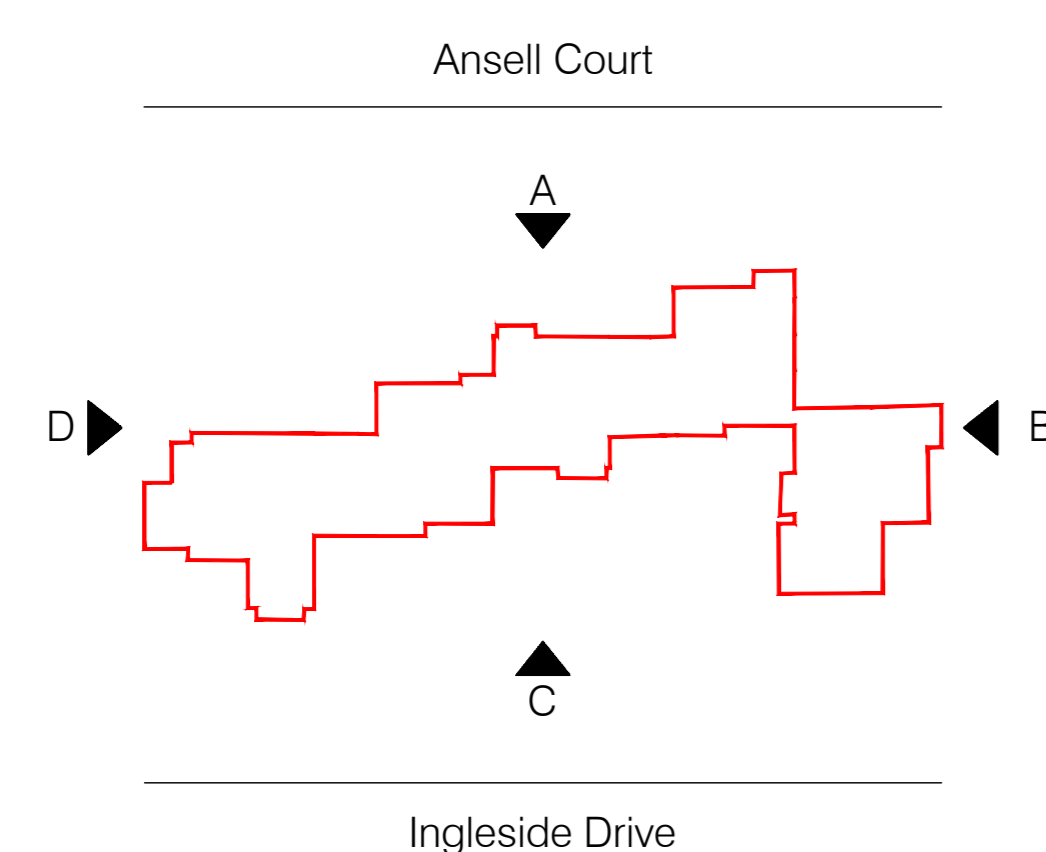
Proposed Section A-A



Proposed Elevation D

STEVENAGE PHASE 5 SPECIFICATION NOTES

- ① NEW PVCU DOUBLE GLAZED WINDOWS TO FLATS TO REPLACE EXISTING, WHITE, EXTENT TO CLIENT REQUIREMENTS
- ①A NEW INFILL BLANKING PANEL TO GLAZED WINDOWS TO FLATS, TO REPLACE EXISTING & APPEARANCE TO MATCH EXISTING
- ② NEW COMMUNAL ENTRANCE DOORS WITH ASSOCIATED FITTINGS, TO REPLACE EXISTING, INCLUDING SIDE PANEL WHERE APPLICABLE ALUMINIUM FRAMES WITH GLAZED PANELS, PPC TO RAL 7011 IRON GREY, MATT FINISH
- ③B NEW PVCU GLAZED WINDOWS TO COMMUNAL AREAS, TO REPLACE EXISTING, WHITE
- ④ NEW CLADDING AND ASSOCIATED FITTINGS TO FLATS, TO REPLACE EXISTING- HORIZONTAL SHIPLAP CLADDING SYSTEM, EUROCELL 125MM HIGH PVC-UE, WHITE
- ④A NEW CLADDING AND ASSOCIATED FITTINGS TO COMMUNAL AREAS, TO REPLACE EXISTING- HORIZONTAL SHIPLAP CLADDING SYSTEM, EUROCELL 125MM HIGH PVC-UE, WHITE
- ⑦ NEW FLAT ROOF COVERING, uPVC FASCIAS, GUTTERS AND DOWNPIPES, TO REPLACE EXISTING.
- ⑧ NEW EXTERNAL DOORS TO SUPPORT ROOMS
- ⑩ NEW EXTERNAL BALUSTRADING TO BALCONIES AND GROUND FLOOR PATIOS, BLACK PAINTED METAL WORK TO REPLACE EXISTING.



Scale 1:50 (metres)

Notes	Revisions	Date	Drawn By	Checked By	Revision	Date	Drawn By	Checked By	Revision	Date	Drawn By	Checked By	Revision	Date	Drawn By	Checked By	Revision
	P1: Issued for planning	25.03.24	WB	DR													