

The contractor is responsible for checking dimensions, tolerances and references. Any discrepancy to be verified with the Architect before proceeding with the works. Where an item is covered by drawings to different scales the larger scale drawing is to be worked to.  
 Do not scale drawing. Figured dimensions to be worked to in all cases.  
 CDM REGULATIONS 2015. All current drawings and specifications for the project must be read in conjunction with the Designer's Hazard and Environment Assessment Record.  
 All intellectual property rights reserved.

**General Notes**

1. Dimensions are in millimeters unless stated otherwise.
2. Levels are in metres AOD unless stated otherwise.
3. Dimensions govern. Please do not scale off drawing.
4. All dimensions to be verified on site before proceeding.

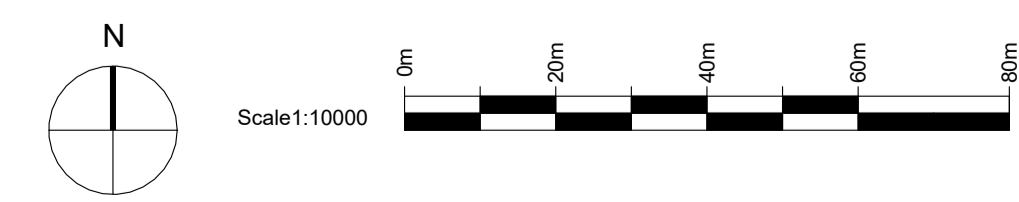
**Key**

- Planning Application Boundary
- - - Illustrative Scheme
- ⊙ Maximum Building Heights (in meters)

**Maximum Building Heights**

⬜ +09m AOD	⬜ +49m AOD
⬜ +15m AOD	⬜ +55m AOD
⬜ +25m AOD	⬜ +58m AOD
⬜ +28m AOD	⬜ +61m AOD
⬜ +33m AOD	⬜ +64m AOD
⬜ +34m AOD	⬜ +70m AOD
⬜ +36m AOD	⬜ +73m AOD
⬜ +40m AOD	⬜ +75m AOD

**Note:** All heights are AOD.  
 The following may exceed the maximum building heights up to a maximum of 75m AOD:  
 1. Access stairs 'pop-ups'  
 2. Lift over runs  
 3. Maintenance cranes  
 4. Communication devices  
 5. Energy Centre Flues



P00	2024-03	Issued for Planning	CC	CF
Rev	Date	Description	Dwn	Ckd

**Waterfront Masterplan Royal Arsenal**  
 Proposed maximum heights plan Parameter plan

**Z429- PRP01- STW- ZZ- DR- A-880-901**  
**REV P00**  
**FOR PLANNING**  
 Drawn CC Checked CF Date 2024-03 Scale @ A1 1: 1000