

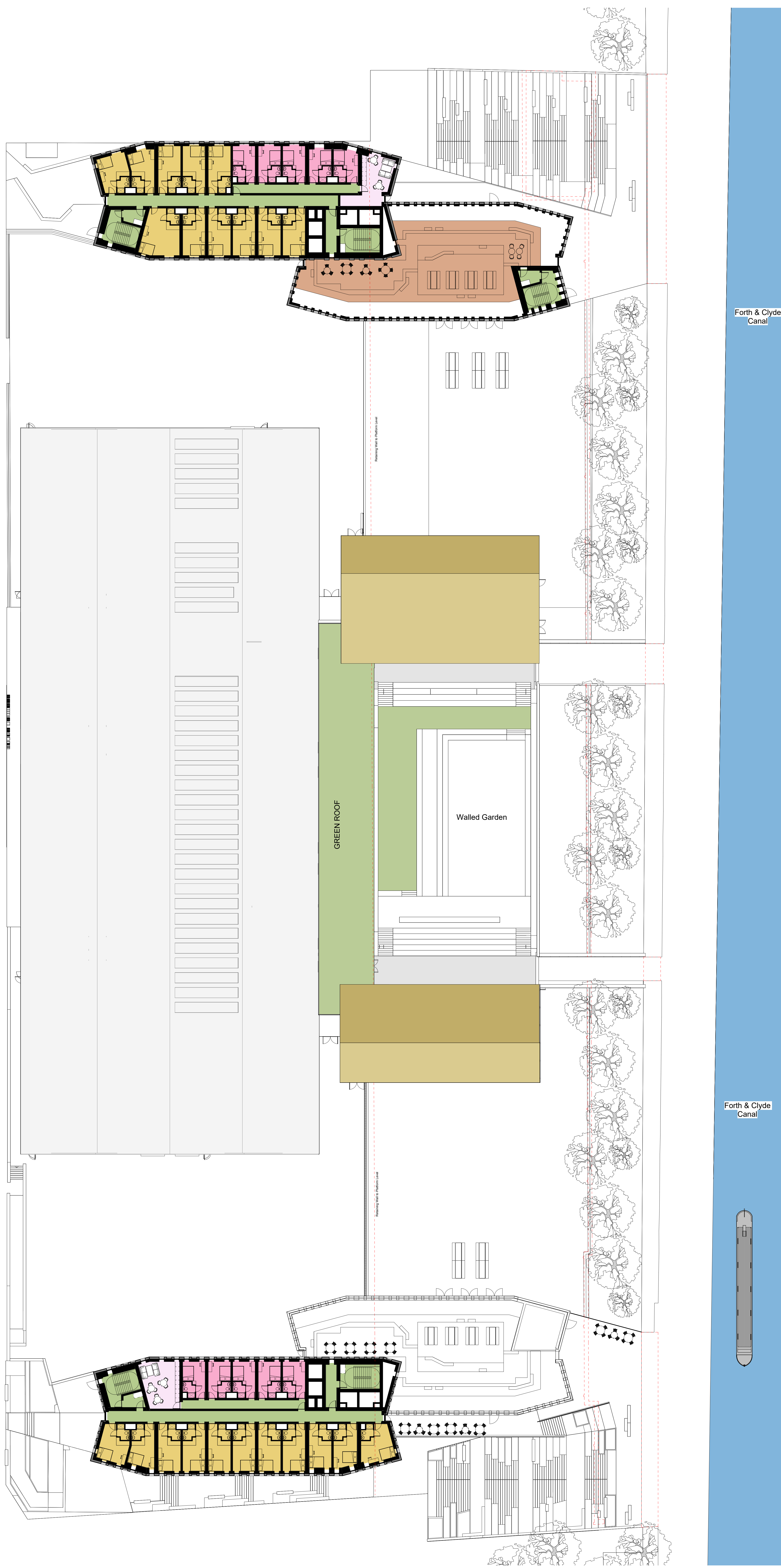
Do not scale from drawing. Use figured dimensions only.
All dimensions to be checked on site by the contractor and any discrepancies to be notified to the architect prior to works being carried out.

Scottish Opera

- Office Space
- Education
- Practice/Rehearsal Room
- Cafe / Lobby (Public - Semi-public)
- Technical Areas / Workshops
- Wardrobe / Wig Department / Changing
- Circulation
- Support

PBSA Residential

- Circulation
- Support
- Internal Amenity
- Accommodation Room
- Commercial



Forth & Clyde Canal

Forth & Clyde Canal