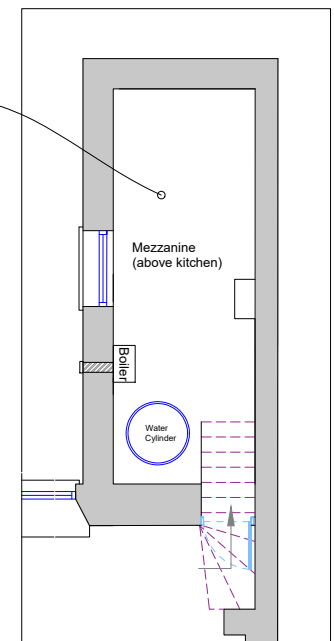


Ground Floor Layout as Proposed
Scale: 1/100 @ A3

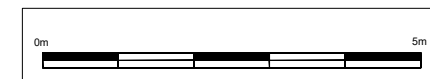


Rear Elevation
Scale: 1/100 @ A3



Mezzanine above kitchen as Existing
Scale: 1/100 @ A3

Legend	
	Energy pendant light
	Energy efficient downlighter fitted with a heat & moisture resistant shroud. Fitting to be extra low voltage, 50 volts alternating current or 120 volts direct current. To BS 7571:2008
	Fluorescent Strip Light
	Mains powered smoke alarm with standby power supply. Interconnected on separate circuit
	Single light switch (two way) - 900mm from F.F.L
	Single 13amp socket outlet
	Double 13amp socket outlet
	Accessible shower trap
	Boiler switch with pilot light above worktop level
	Extract fan to kitchen with a min extract rate of 30% utility rate to be min. 30% with humidistat
	Flue extract for gas boiler
	Extract fan to bathrooms and WCs with a minimum extract rate of 15% with humidistat
	Existing wall mounted gas combi boiler
	Heat detector
	CO2 Detector
	Spur for installation of electric towel rail, 400mm from FFL. Switched from outside.
	13amp spur switch with Neos 1100mm above floor level to provide isolation to low level sockets
	Ceiling mounted drying fixture, 2no rows @900mm long = 1m3
	Water Supply
	12,000sq/m trickle vent
	Recycling of solid waste: Provide a dedicated internal space with a volume of at least 0.12m3 (120 litres) and no dimension less than 450mm for storing recyclable material
	Floor joist span direction
	Gas supply
	Wiring circuit - Lights
	Waste pipework - uPVC
	Heat Emitter - on flow and return circuits



Rev	Date	Details
Issued for Listed Building Consent / Building Warrant		
Proposed Layout		
555 Shields Road, Glasgow, G41 2RW		
Scale	Drawn By	
1/100	A3	FH
Date	Drawing No.	
08/03/2024	(P)-01	Issue