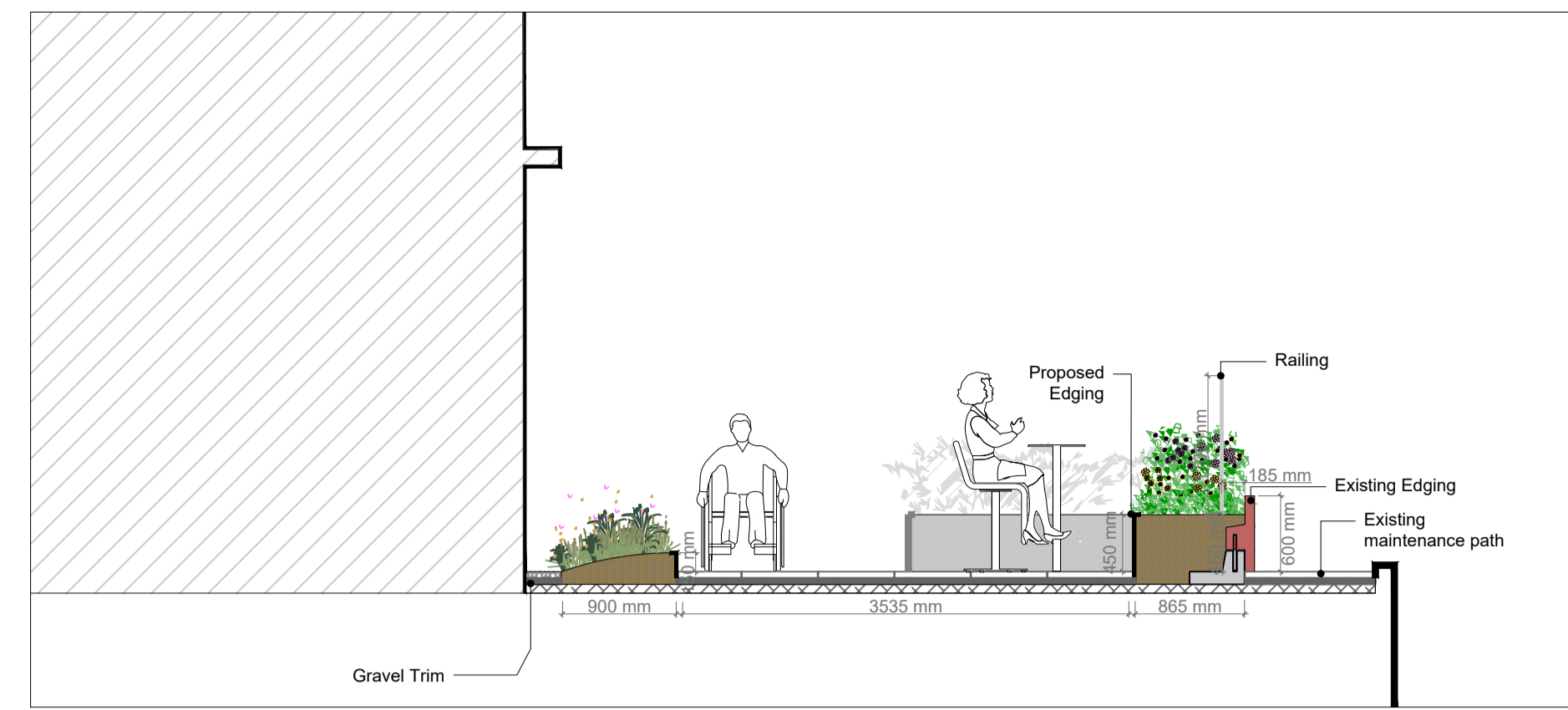
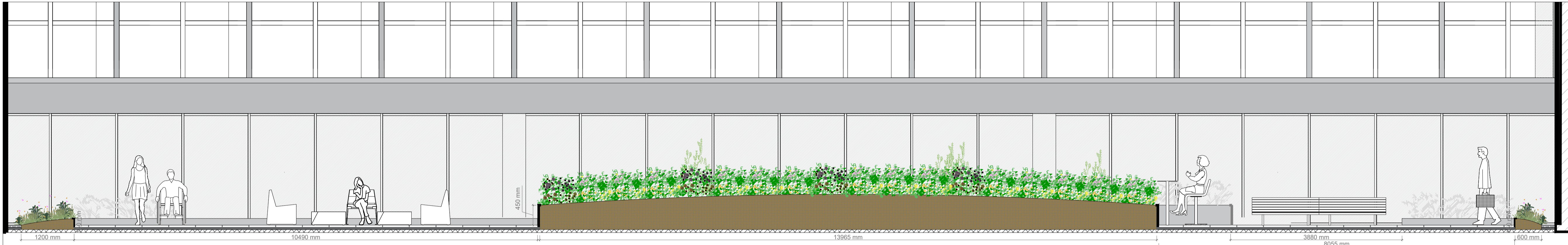


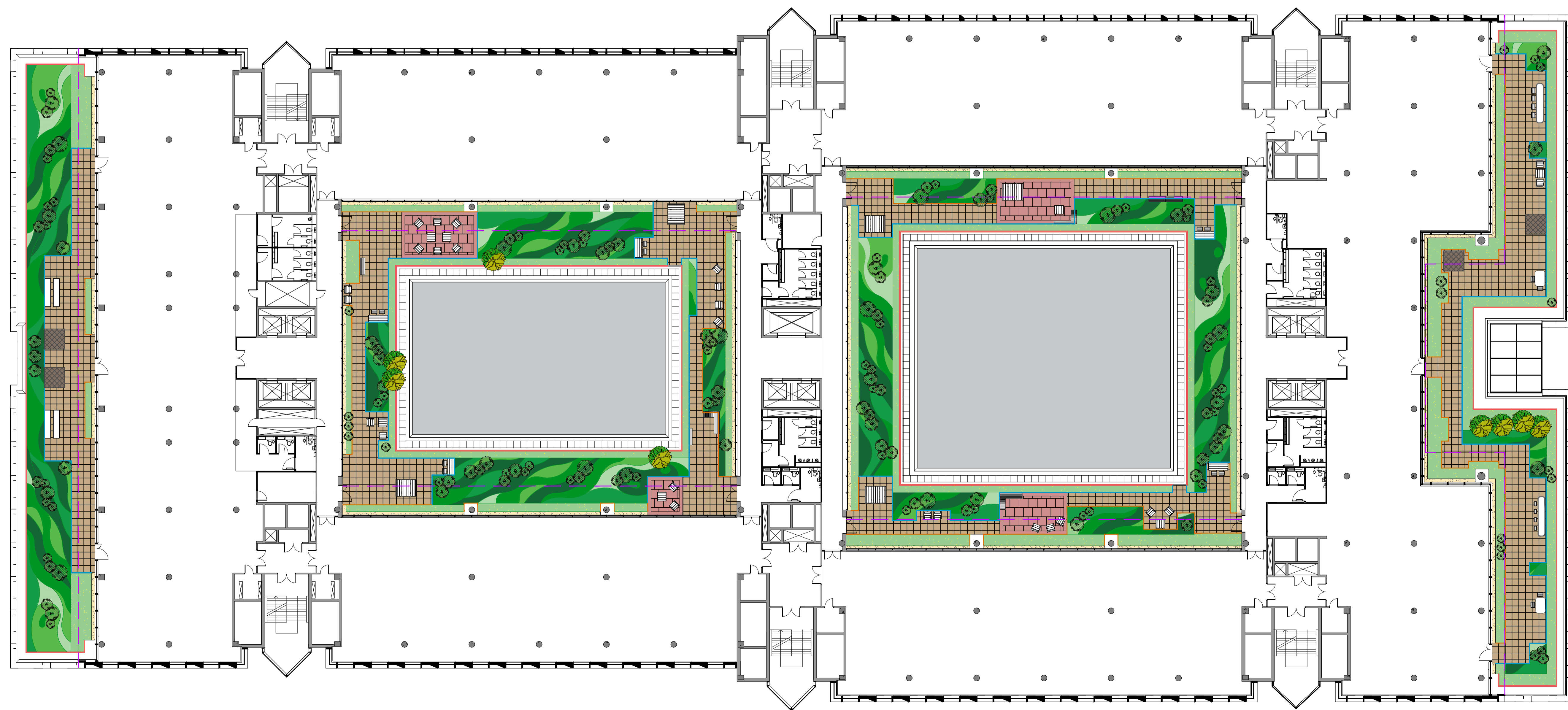
Key Plan
Scale 1:1000



Section CC
Scale 1:50



Section BB
Scale 1:50



Scale 1:200

- Legend:**
- Soft Landscape**
- Existing vegetation to retain
 - Trees/Specimen Shrubs
Ilex aquifolium **, *Corylus avellana* **, *Betula jacquemontii*, *Parrotia persica*, *Viburnum opulus* **
 - Ornamental Native Planting
- Perennials - *Allium schoenoprasum* **, *Achillea ptarmica* **, *Cornus suecica* **, *Salvia verbenaca* **
- Grasses - *Calamagrostis* spp., *Molinia caerulea* "Variegata"
 - Ornamental Pollinator Planting
- Shrubs - *Cornus sanguinea* **, *Mahonia aquifolium* **, *Lavandula angustifolia* "Hidcote" **, *Sarcococca hookeriana* var. *hookeriana* "Chorepani" ^
- Perennials - *Echinacea purpurea* "White Swan", *Echinops barmicus* **, *Bergenia purpurascens* var. *delavayi* **, *Hebeborus argutifolius* **, *Helium Moonheim Beauty* **, *Oenothera lindheimeri* "Whirling Butterflies" **, *Geranium dissectum* **, *Aquilegia vulgaris* **, *Eupatorium "Snowball"* **, *Eupatorium "Chocolate"* **, *Iris "Just Around Midnight"* **, *Astrantia major* "Pink Pride"
 - Ornamental Native Shade Planting
- Shrubs - *Hypericum hircinum* **,
- Ferns - *Polystichum aculeatum* **, *Dryopteris affinis* **, *Osmunda regalis* **, *Athyrium filix-femina* **,
- Perennials - *Luzula* spp. **, *Convallaria majalis* **
 - Other Ornamental Planting**
- Perennials - *Miscanthus sinensis* "Silver Charm", *Libertia grandiflora*, *Hosta "Hands Up"* **, *Hosta "First Blush"* **, *Salvia "Little Spire"* **, *Astibe "Cappuccino"* **, *Astibe "Vision Volcano"* **, *Ophiopogon planiscapus*
 - Sensory Planting**
- Shrubs - *Helichrysum italicum* **, *Lavandula angustifolia* **, *Rosmarinus officinalis* "Miss Jessop's Upright"
- Perennials - *Artemisia absinthium* **, *Foeniculum vulgare* **, *Salvia verbenaca* **, *Tubaghia violacea*
 - Groundcover Low-maintenance Evergreen Planting**
- Shrub - *Vinca* spp., *Fachysandra*, *Veronica albicans* **,
Euonymus japonicus "Microphyllus"
- Grasses - *Carex* spp. **,
- Climbers - *Hedera helix* **

* Native | ^ Pollinator

Minimum soil depths:
Specimen Shrubs - 600mm;
Shrubs - 400mm;
Ferns - 300 to 450mm;
Perennials, Grasses & Climbers - 300mm.

NOTE: All planting indicative and to be reviewed at a further and more detailed stage

- Hard Landscape**
- Light Grey Paving Flags or Existing Paving retained subject to further analysis and suitability assessment
 - Feature Paving
 - Gravel Trim
 - Existing concrete edging - 600mm height
 - Proposed metal edging - 450mm height
 - Proposed metal edging - 150mm height
 - Diverse Furniture - Individual and multiple benches, low, high and picnic tables. Mix of fixed and movable furniture.
 - Shelter with seating
 - Pergola on feature paving area
 - Overhang - Please refer to Architects drawings for details and specifications

1. This drawing is intended to show landscape architectural proposals only. Please refer to Architects and Engineer's drawings for relevant details of buildings, structures, roads, parking, etc.

2. The copyright of this drawing is vested with Murray & Associates. This drawing may not be copied or reproduced without written consent.

3. All materials related to this drawing, including plant species, are indicative and subject to change following detailed site investigation. Significant changes, if any are required, will be referred to the relevant authority for agreement.

4. This drawing is not suitable for use for construction purposes.

5. Discrepancies to be referred to Murray & Associates for clarification.

murray & associates
landscape architecture

14 The Seapoint Building, m01@murray-associates.com
44-45 Convent Road, www.murray-associates.com
Dublin-3, D03 RFE3, +353 (0)1 854 0090

REV	DATE	REVISION	DRAWN	CHECKED
0	05/03/24	Planning	JB	MB

CLIENT
Osborne + CO on behalf of Santander

PROJECT TITLE
301 St Vincent Street

SHEET TITLE
Landscape Plan - Level 3

SHEET NO.	SHEET SIZE
1918_PL_P_03	A1
SCALE	REVISION
As Shown	0
STAGE	DATE
Planning	05/03/24