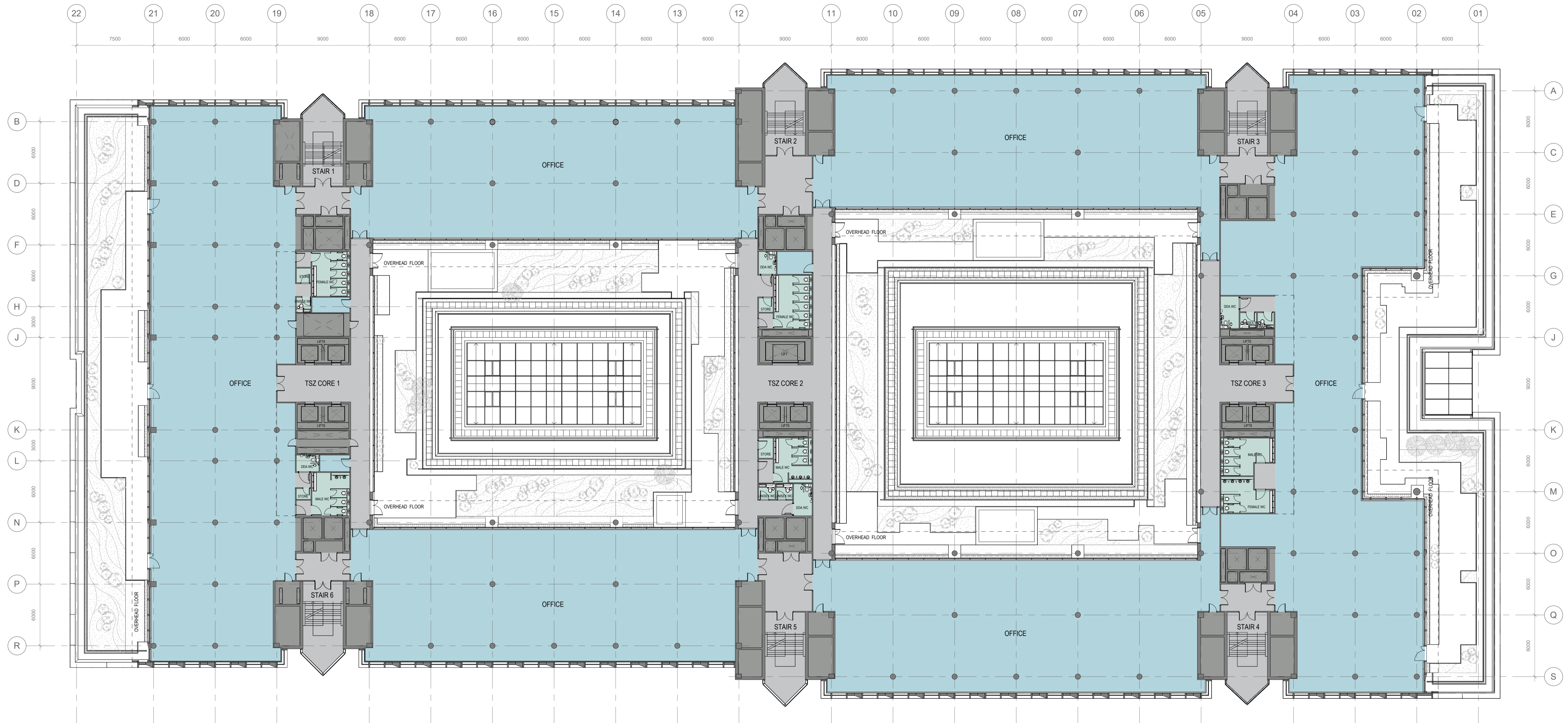


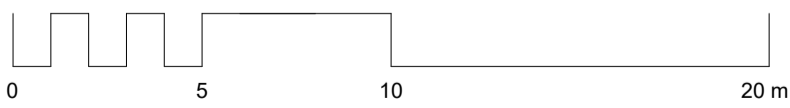
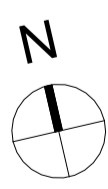
KEY

- OFFICE
- WC
- CIRCULATION
- LIFT / RISER



NOTES

- Drawings are design intent and subject to further design development and coordination with engineering and landscape consultant's information.
- Internal configurations of meeting, event and other building amenity spaces are subject to further design development and are shown for indicative purposes only.
- All furniture indicated is indicative for space planning purposes only.
- Elevations are based on survey information provided by a third party.
- Full survey information is required for basement, car park mezzanine, lower ground floor, ground floor, L1, L3 and L4. Internal layouts may be subject to change.
- Building stacking and letting configuration subject to further development. Floor entrances, WC configurations and access arrangements may be subject to change.



USE OF DRAWINGS
 DO NOT SCALE FROM THIS DRAWING. USE WRITTEN DIMENSIONS AND CHECK ON SITE. THIS DRAWING IS BASED ON SITE INFORMATION SUPPLIED BY THIRD PARTIES AND ACCURACY OF EXISTING FEATURES IS NOT GUARANTEED. ANY ERROR, OMISSION OR DISCREPANCY NOTED ON OR BETWEEN DRAWINGS AND OTHER DOCUMENTS MUST BE REPORTED IN WRITING IMMEDIATELY. ALL MECHANICAL, ELECTRICAL AND STRUCTURAL LAYOUTS COMPONENTS ARE INDICATIVE AND MUST BE DESIGNED AND CHECKED BY SPECIALISTS. DO NOT START WORK ON SITE BEFORE CONFIRMING THAT ALL NECESSARY STATUTORY AND OTHER CONSENTS HAVE BEEN OBTAINED. THIS DRAWING IS COPYRIGHT AND MUST NOT BE DISTRIBUTED WITHOUT PERMISSION. ELECTRONIC CAD FILES MUST NOT BE ALTERED OR COPIED.

REVISIONS		
REV	DATE	DESCRIPTION
-	24.03.01	PLANNING ISSUE

DRAWN: _____
 CHECKED: _____

client	OSBORNE + CO ON BEHALF OF SANTANDER
sheet size	A1
status	PLANNING

project	301 ST VINCENT STREET GLASGOW	project number	2088
drawing title	PROPOSED LEVEL 3 GA PLAN		
scale	1:200@A1	drawing no.	2088- A- P1130
approved by		revision	-

LOM architecture and design
 The Glass House 5 Sclater Street London E1 6JY UK
 Tel +44(0)20 8444 2999 Email mail@lom-fdp.com
 Web www.lom-architecture.com