

Places for People – Outdoor Art Installation Site Information

47 ST PATRICKS SQUARE, EDINBURGH, EH8 9ET (21 Buccleuch Street)

6 images in total:

Proposed material – ACM Board

6 x images as below (all portrait format) long edge 150cm

2 x images on long stretch before door, 1 image on short stretch.

In one linear hang at same height from ground



30 POTTERROW, CITY CENTRE, EDINBURGH, EH8 9BT

3 images in total:

Proposed material – ACM Board

Big image on its own wall should be 120CM high and 180CM wide.

There should ideally be a wooden frame around the image that is 5-10cm wide.

Smaller images on the opposite wall above the gas box should be 60CM high and 90CM wide.



69 Buccleuch Street:

16 images in total:

Proposed material – ACM Board

Wall A - 4 x (175 cm x 117 cm)

Wall B - 7 x (175 cm x 117 cm)

Curve - 5 x (24 cm x 24 cm)

Wall A

5 small squares to be placed on blue tiles at the entrance.

4 larger images to be placed on the wall between the lamppost and the light fixture towards the back of the tunnel.

Wall B

7 larger images to be placed between the building information signs at the entrance and the end of the tunnel at the back.

Mock up below is a general representation of how the site is set to look.



GRAYS COURT, WEST NICOLSON STREET, EDINBURGH, EH8 9EX

1 Image in total:

Proposed material – ACM Board

250 cm x 250 cm to replace existing image in the square frame.



11 WEST TOLLCROSS, EDINBURGH, EH3 9QN

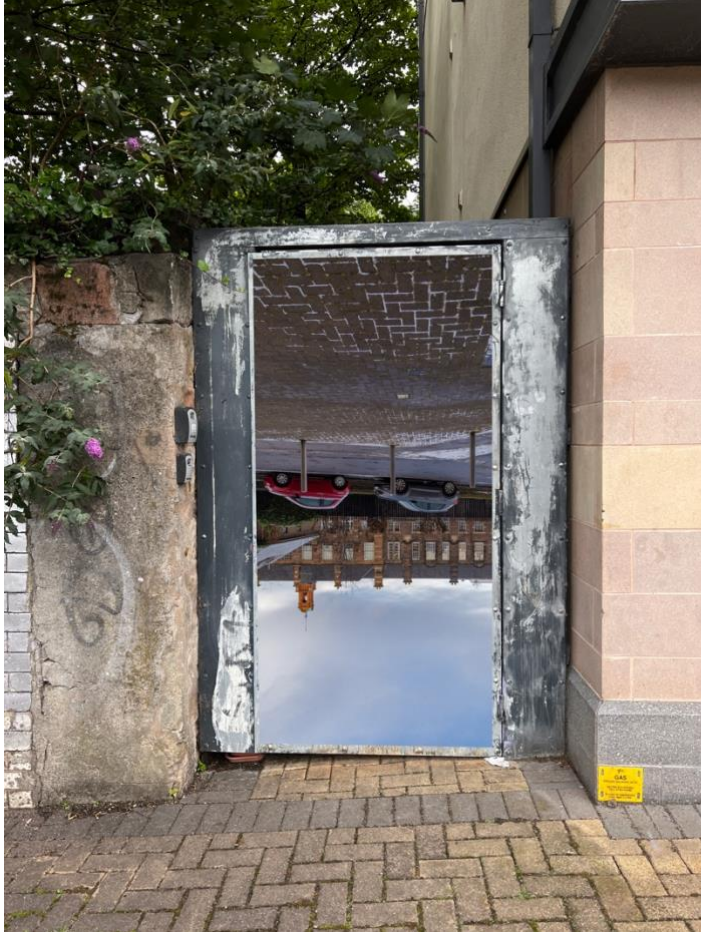
3 images in total:

Proposed material - ultratack vinyl

Left door 98cm x 200cm

Double door left 75cm x 147cm

Double door right 75cm x 147cm





146 Cowgate, EH1 1RP (pillars)

8 images in total:

Proposed material - vinyl

1. 275 x160
2. 257 x160
3. 257 x 160
4. 266 x 160
5. 272 x 160
6. 275 x 160
7. 327 x 160
8. 320 x 160

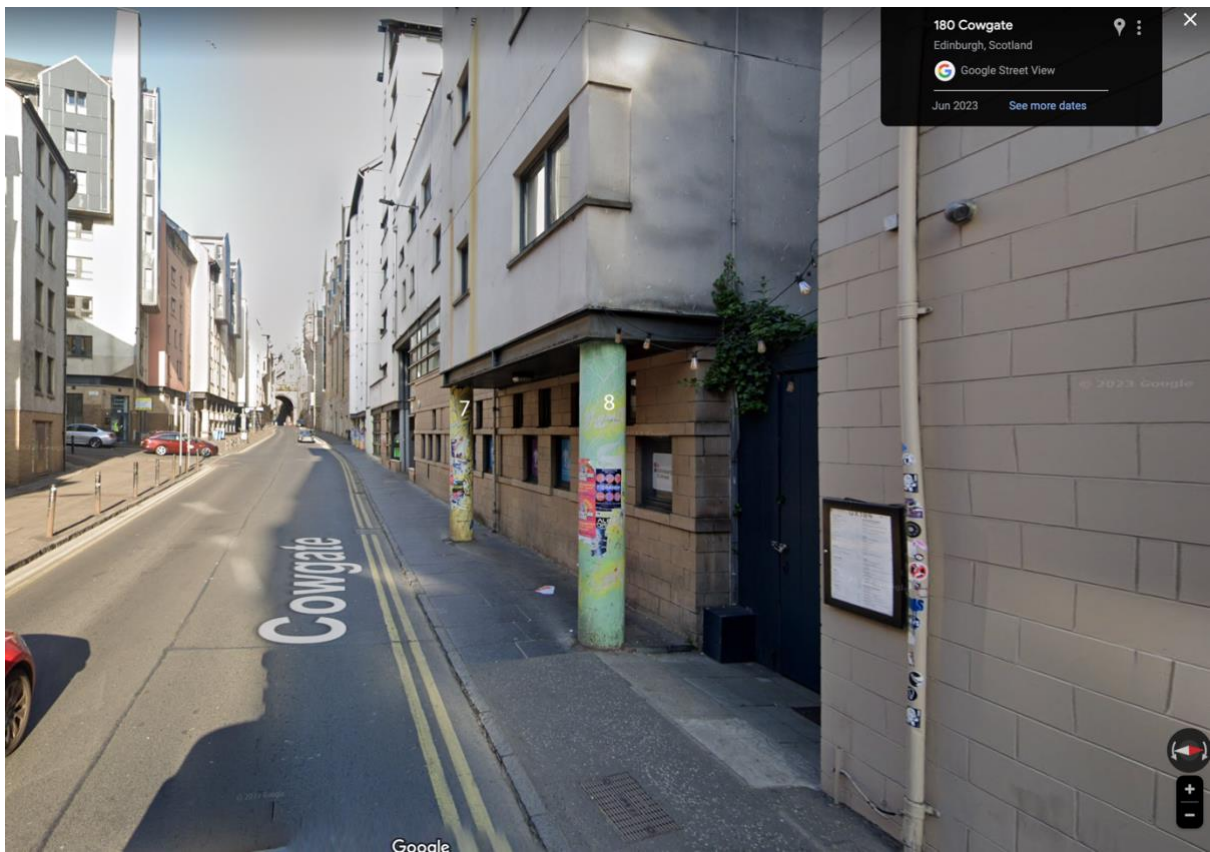
Images of related columns:



Columns 1,2,3



Columns 4,5,6



Columns 7,8