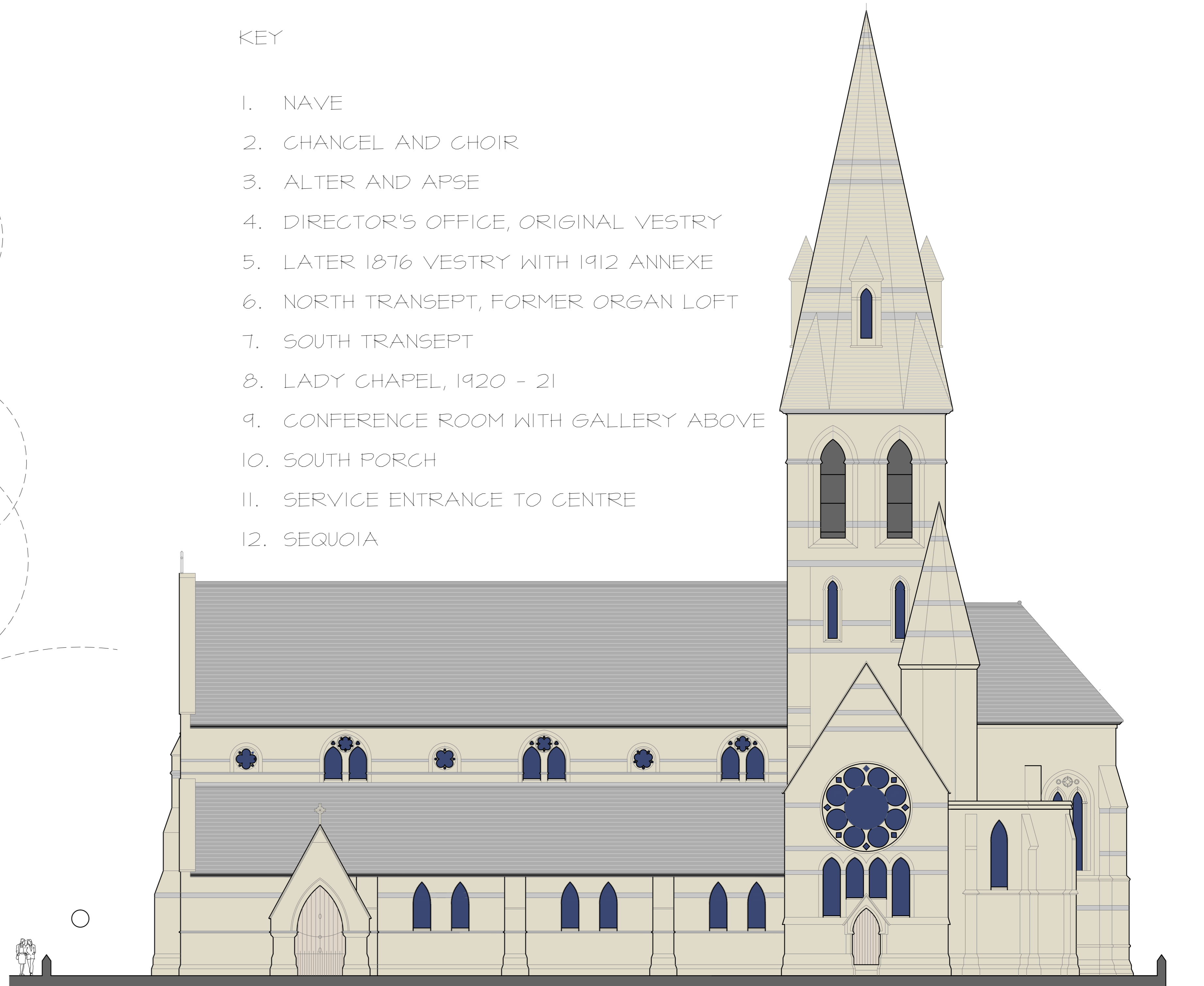


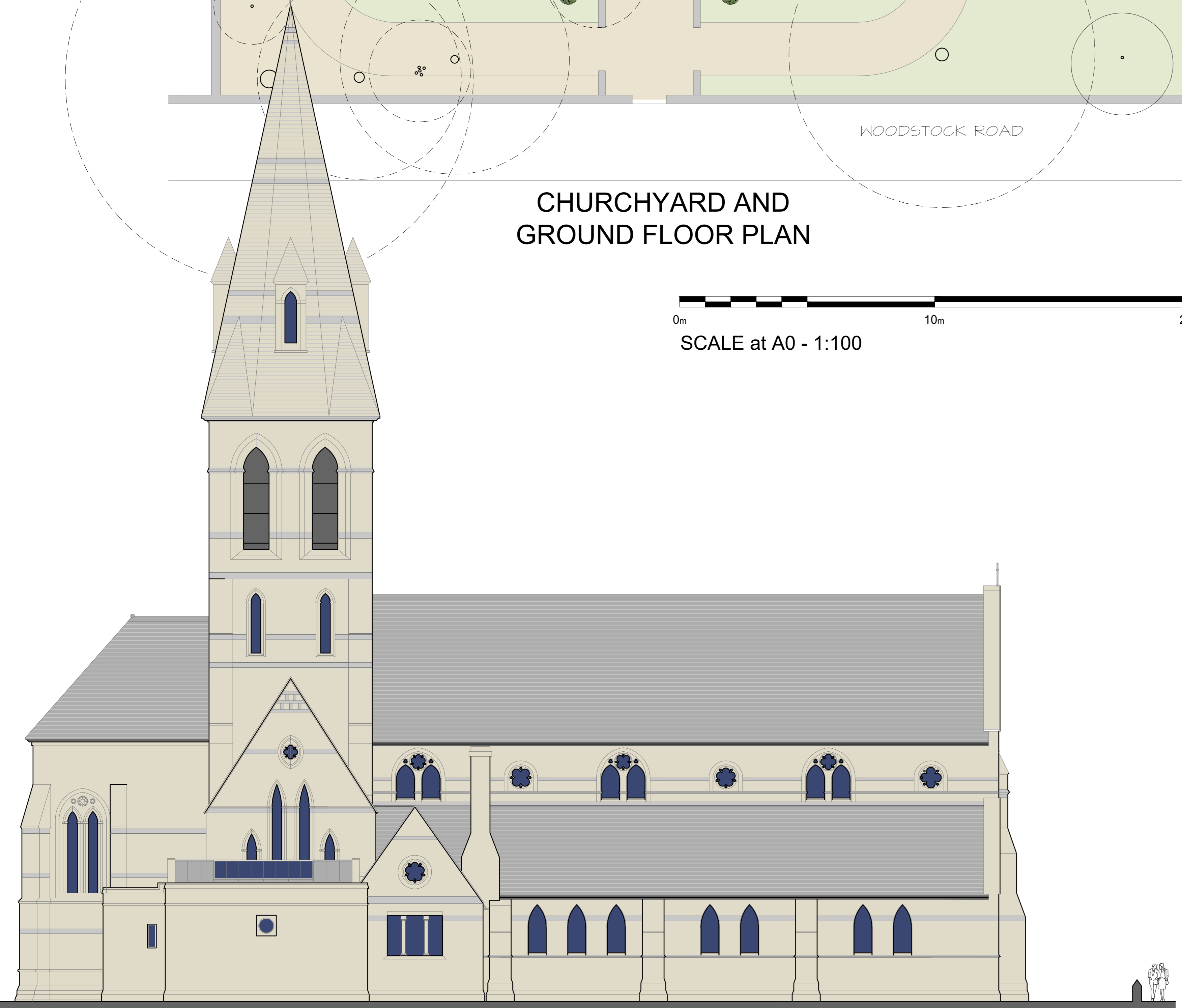
KEY

- 1. NAVE
- 2. CHANCEL AND CHOIR
- 3. ALTER AND APSE
- 4. DIRECTOR'S OFFICE, ORIGINAL VESTRY
- 5. LATER 1876 VESTRY WITH 1912 ANNEXE
- 6. NORTH TRANSEPT, FORMER ORGAN LOFT
- 7. SOUTH TRANSEPT
- 8. LADY CHAPEL, 1920 - 21
- 9. CONFERENCE ROOM WITH GALLERY ABOVE
- 10. SOUTH PORCH
- 11. SERVICE ENTRANCE TO CENTRE
- 12. SEQUOIA

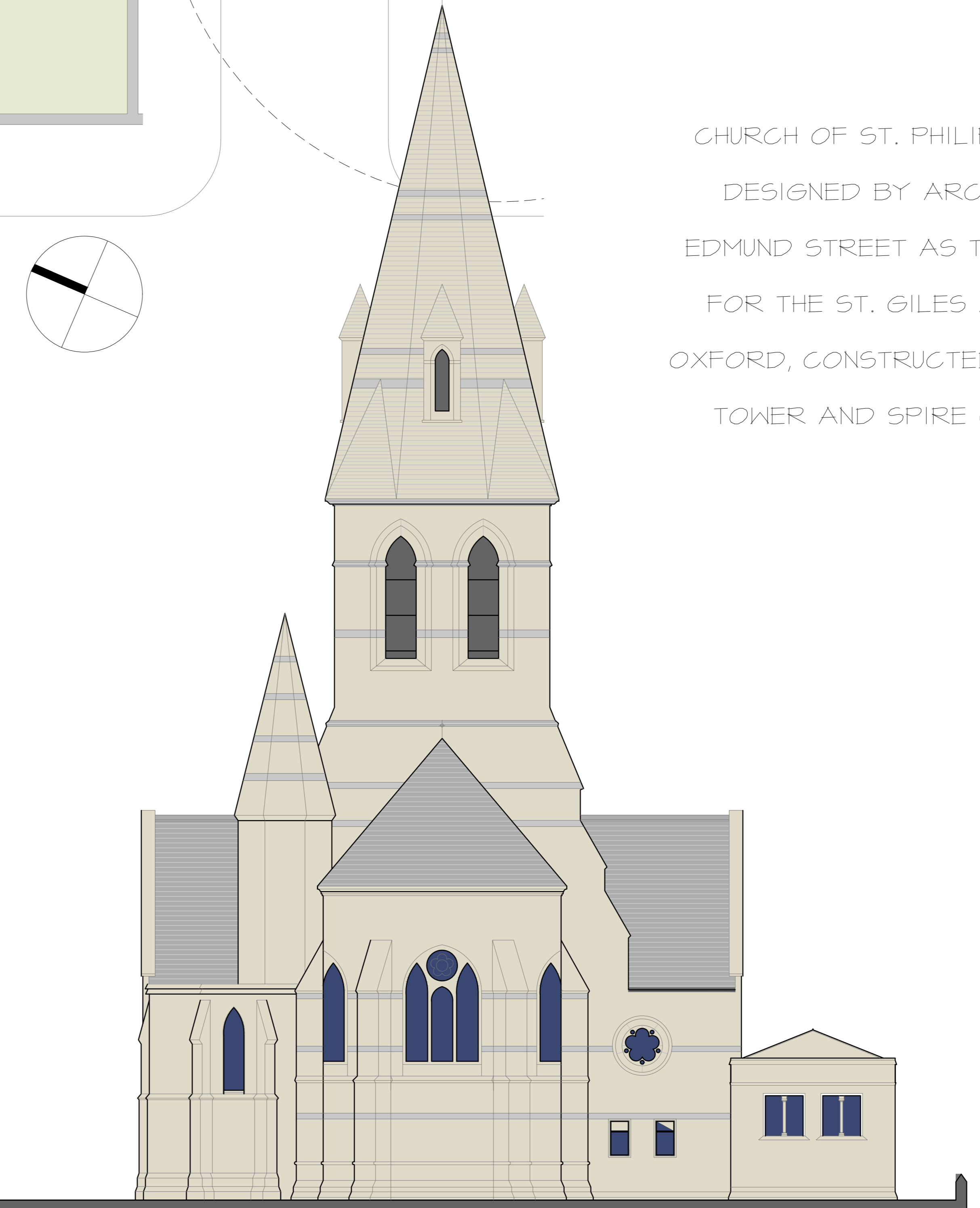


SOUTH ELEVATION

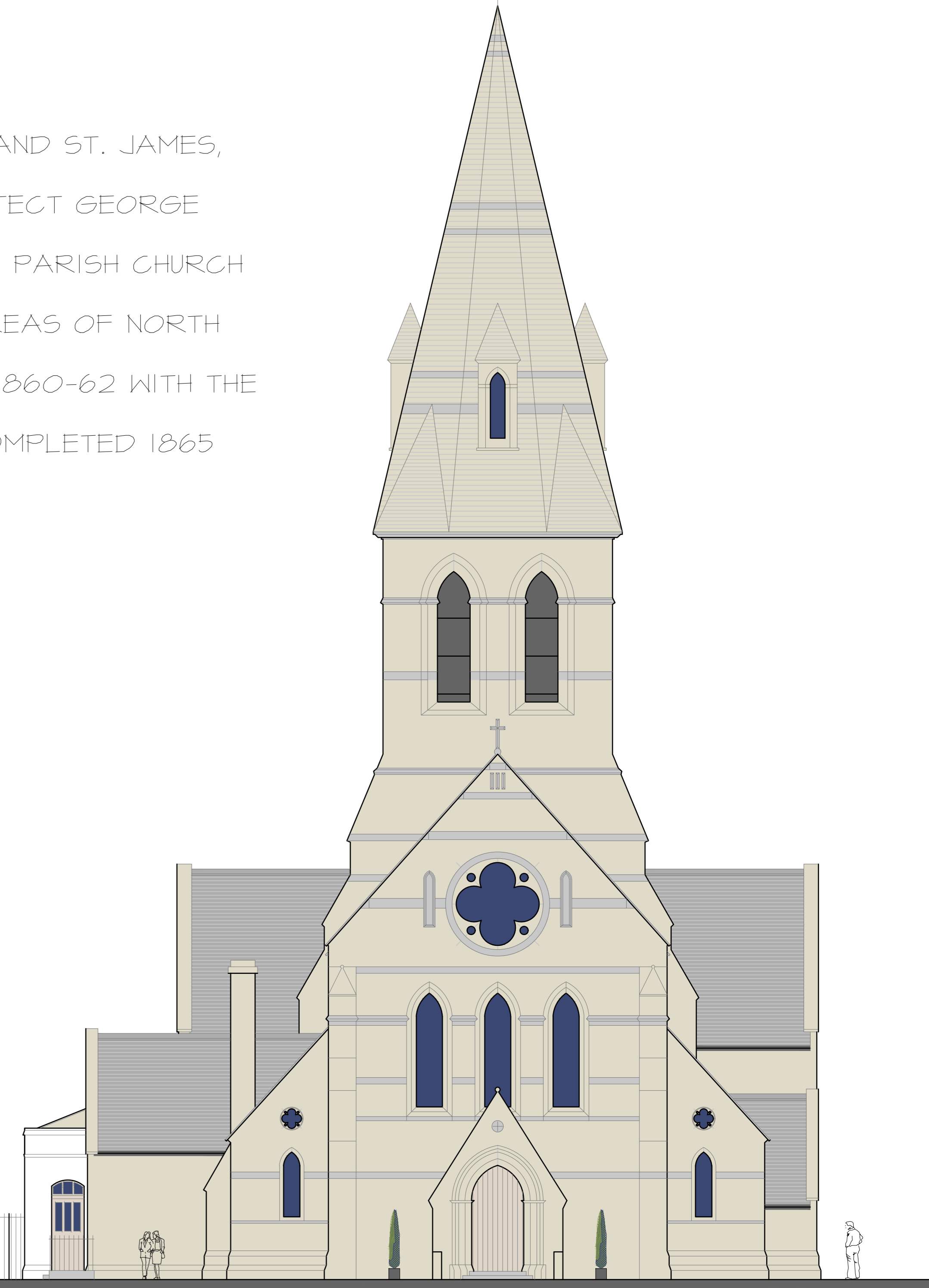
CHURCH OF ST. PHILIP AND ST. JAMES,
DESIGNED BY ARCHITECT GEORGE
EDMUND STREET AS THE PARISH CHURCH
FOR THE ST. GILES AREAS OF NORTH
OXFORD, CONSTRUCTED 1860-62 WITH THE
TOWER AND SPIRE COMPLETED 1865



NORTH ELEVATION



EAST ELEVATION



WEST ELEVATION TO WOODSTOCK ROAD