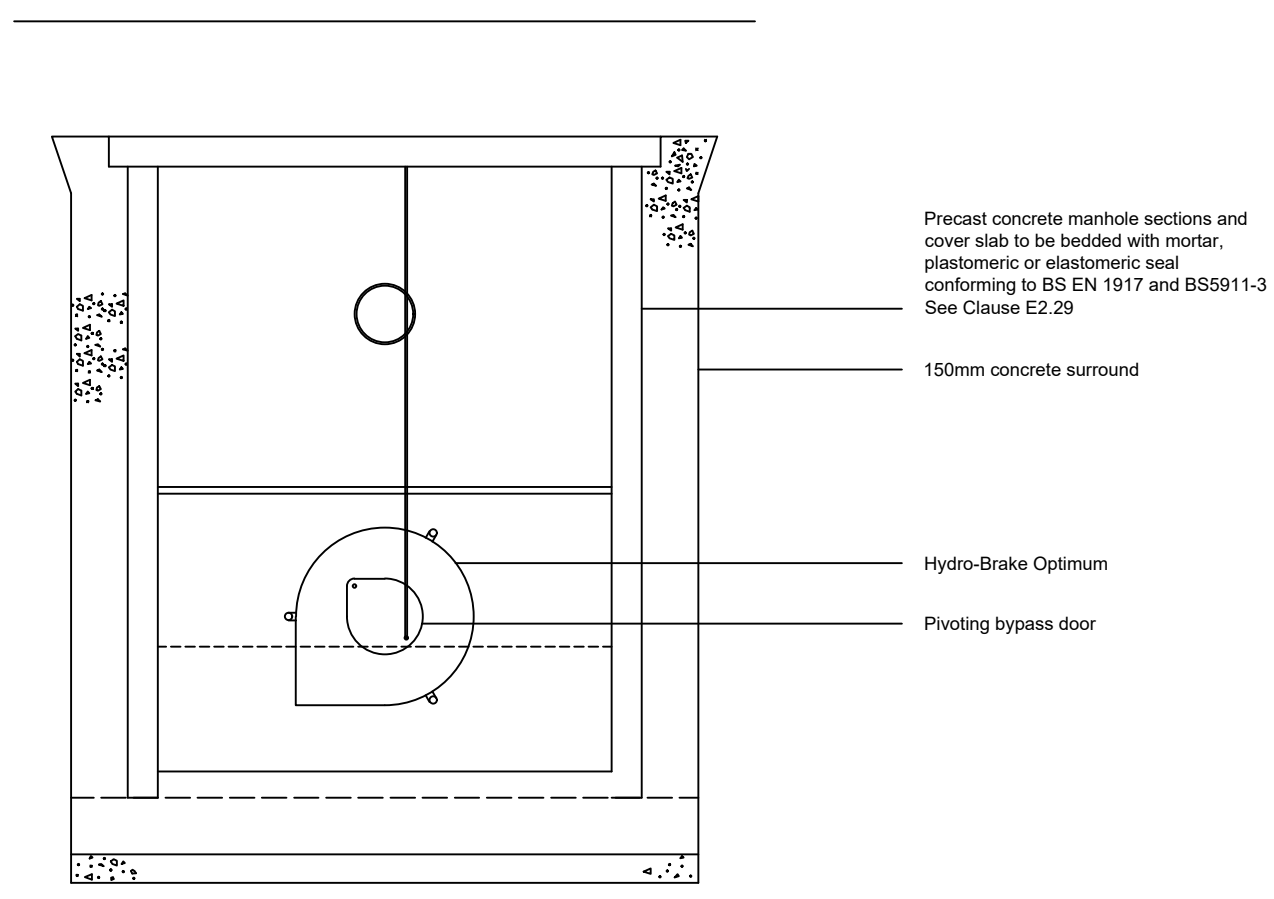
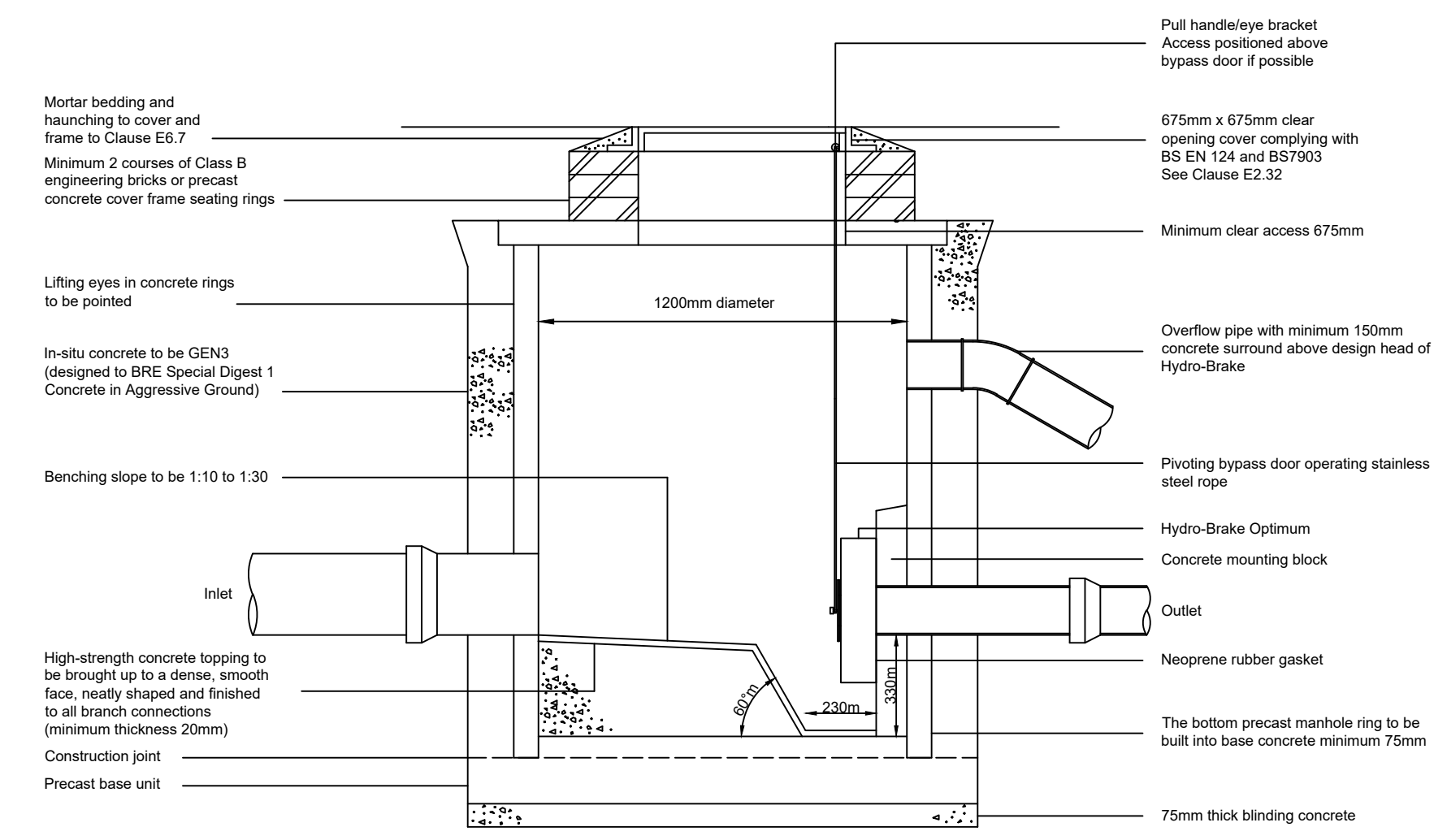
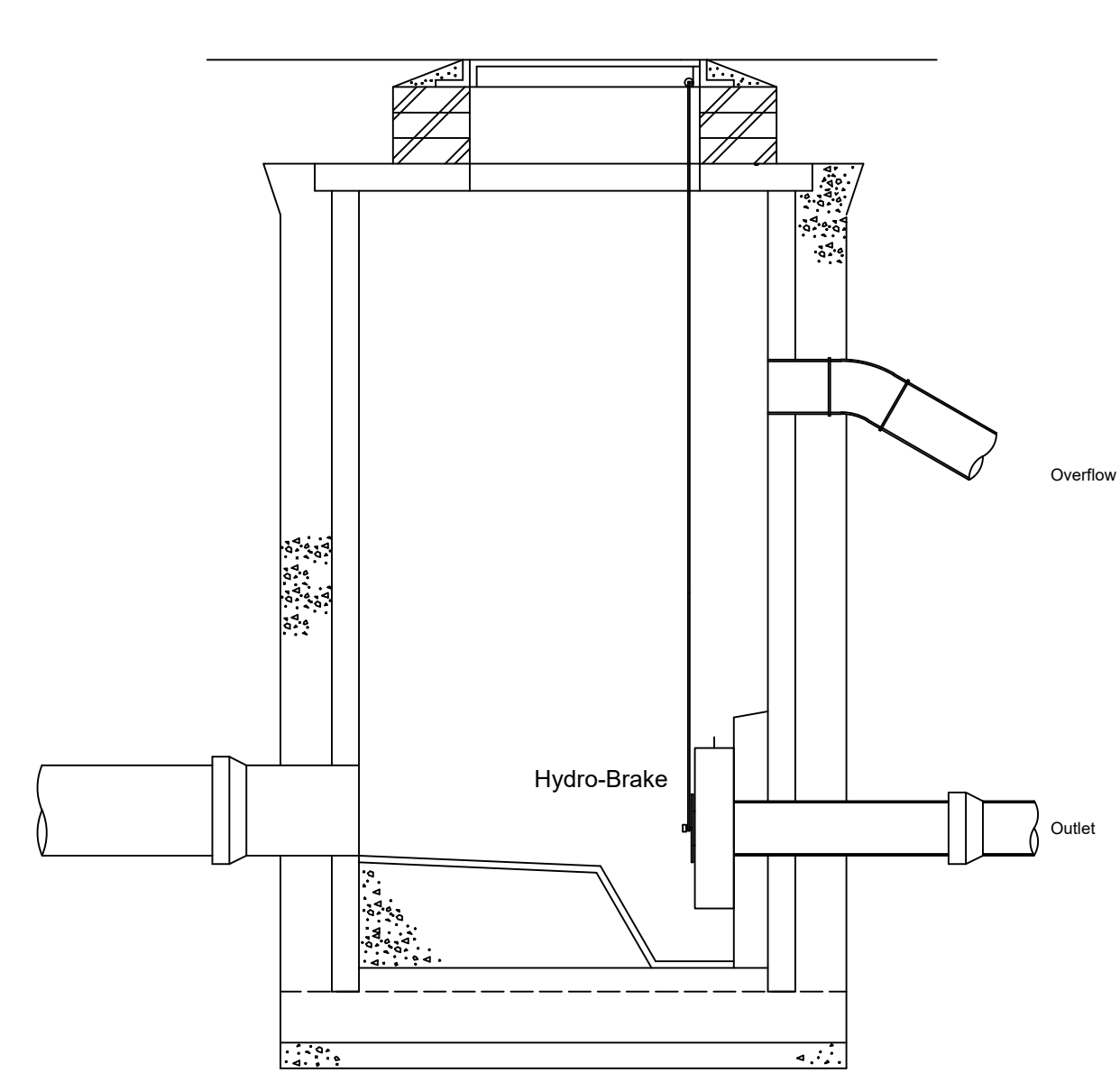


Notes:
 Please report all discrepancies, errors and omissions.
 Verify all dimensions on site before commencing any work on site or preparing shop drawings.
 All materials, components and workmanship are to comply with the relevant British Standards, Codes of Practice, and appropriate manufacturers recommendations that from time to time shall apply.
 For all specialist work, see relevant drawings.
 This drawing and design are copyright of RMB Consultants (Civil Engineering) Ltd.
 When this document is provided in electronic file format it is intended as a guide only and the recipient is to verify all dimensions and details with the Architects. If this is not acceptable, the files must be returned unused together with a written communication declining acceptance of this condition.



Type B Manhole Detail - With Hydro-Brake Flow Control

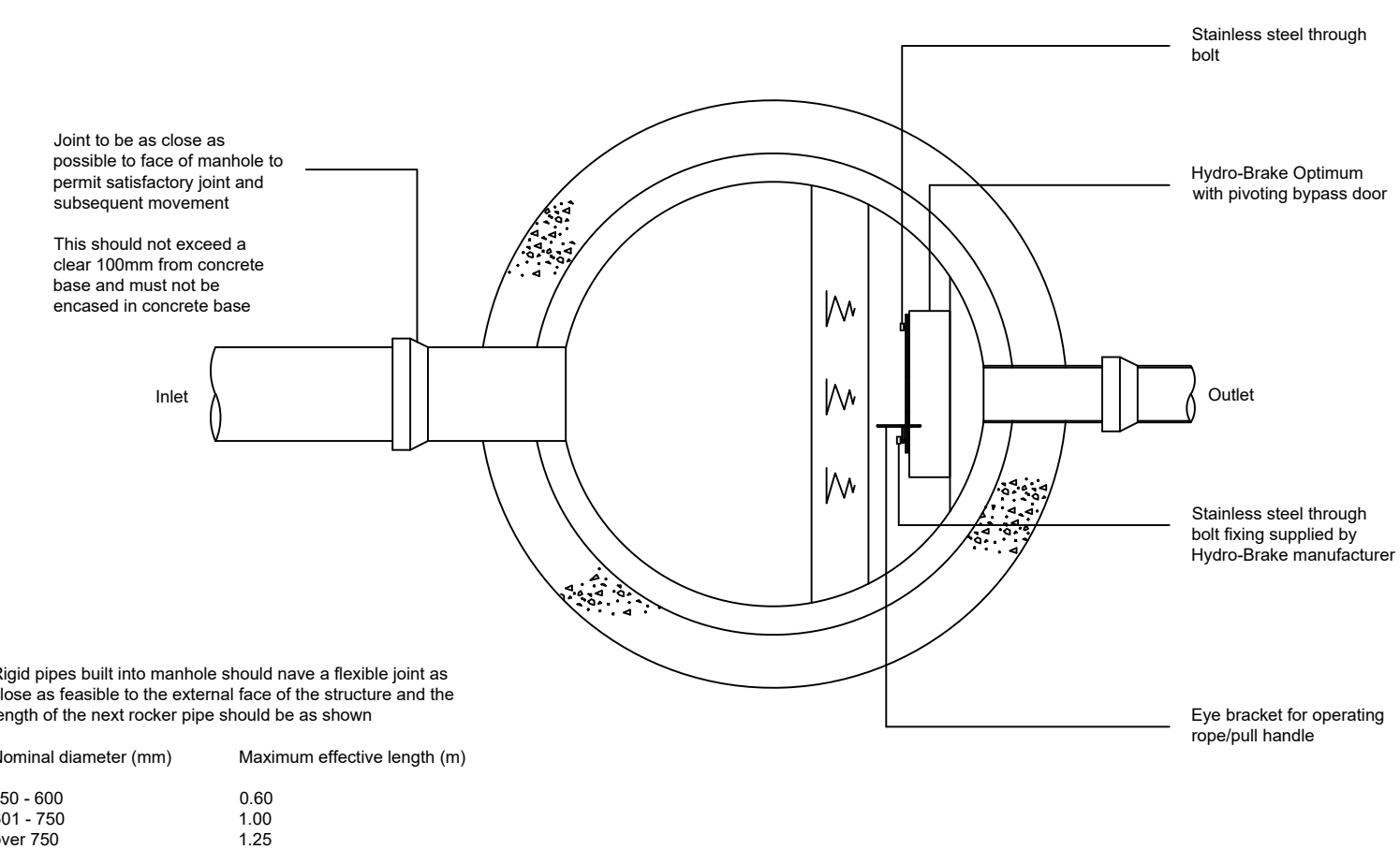
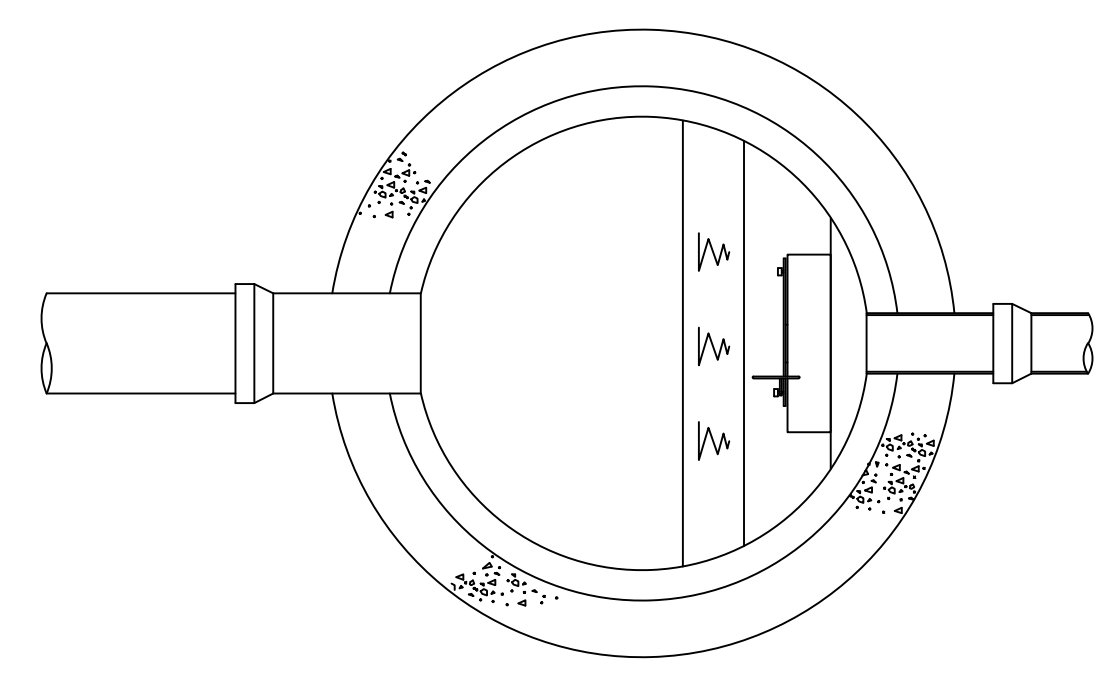
To be constructed in accordance with the Design and Construction Guidance manual ("the Code").

SW14 Technical Specification Criteria		
	Head (m)	Flow (l/s)
Design Point	0.500	2.0
Unit Reference	CTL-SHE-0075-2000-0500-2000	

NOTE - A pre-formed Hydro-Brake® Chamber Base is available from Hydro International with Hydro-Brake Optimum™ pre-fitted

SW14 Overflow Invert Level 5.900mAOD

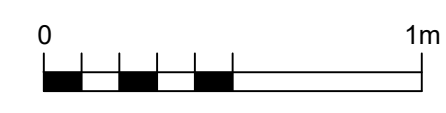
Online Storage Manifold Connection and Hydrobrake Control Detail



Rigid pipes built into manhole should have a flexible joint as close as feasible to the external face of the structure and the length of the next rocker pipe should be as shown

Nominal diameter (mm)	Maximum effective length (m)
150 - 600	0.60
601 - 750	1.00
over 750	1.25

Rev.



39 Cossington Road Canterbury Kent CT1 3HU Tel: Fax: 01227 471238 Mobile 07886 185705 www.rmbconsultants.co.uk robert.bee@rmbconsultants.co.uk			
client	project	drawing	scale
Fleet House	Fleet House Upnor Road Lower Upnor ME2 4UP	HydroBrake Details	1:20 @ A1
		date	drawn by
		March 2024	RB
		drawing no.	1262/304