



3

Cladding System



RAL7023 - Concrete Grey

4

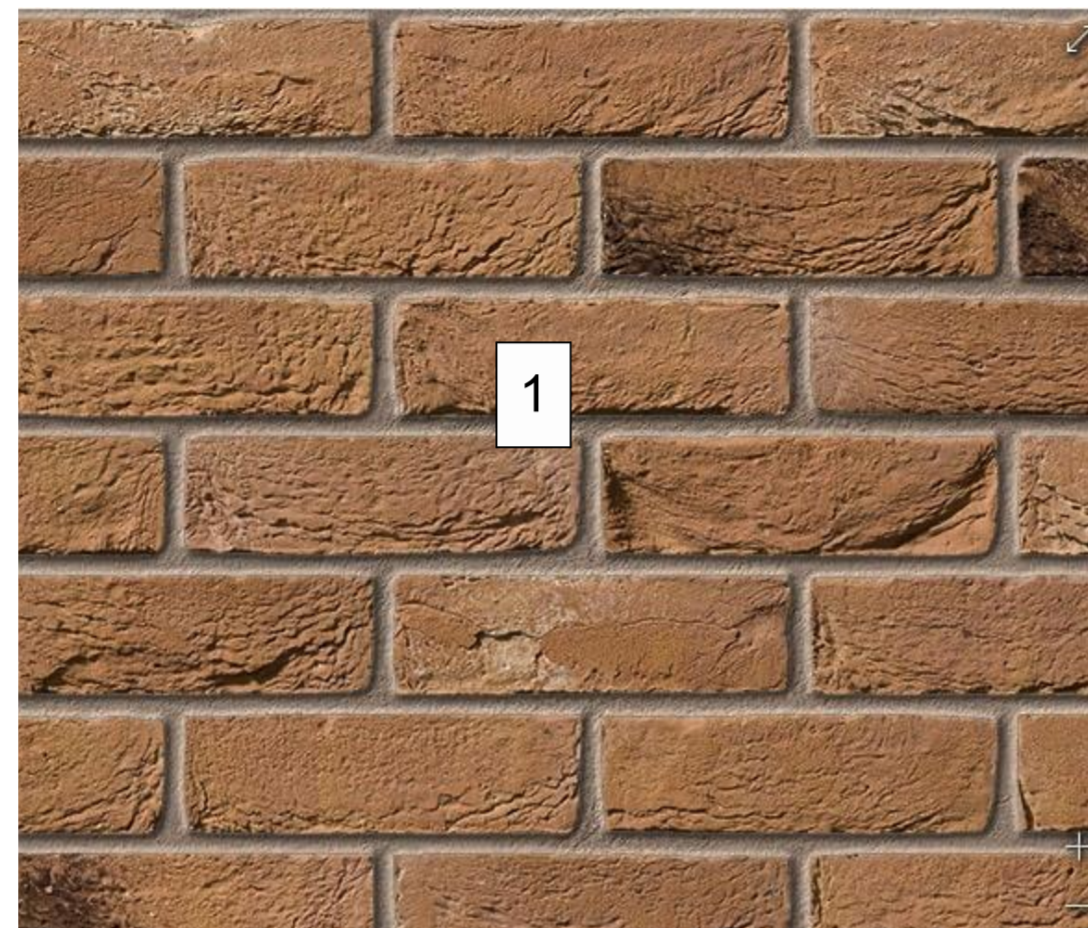


RAL5024 - Pastel Blue

5

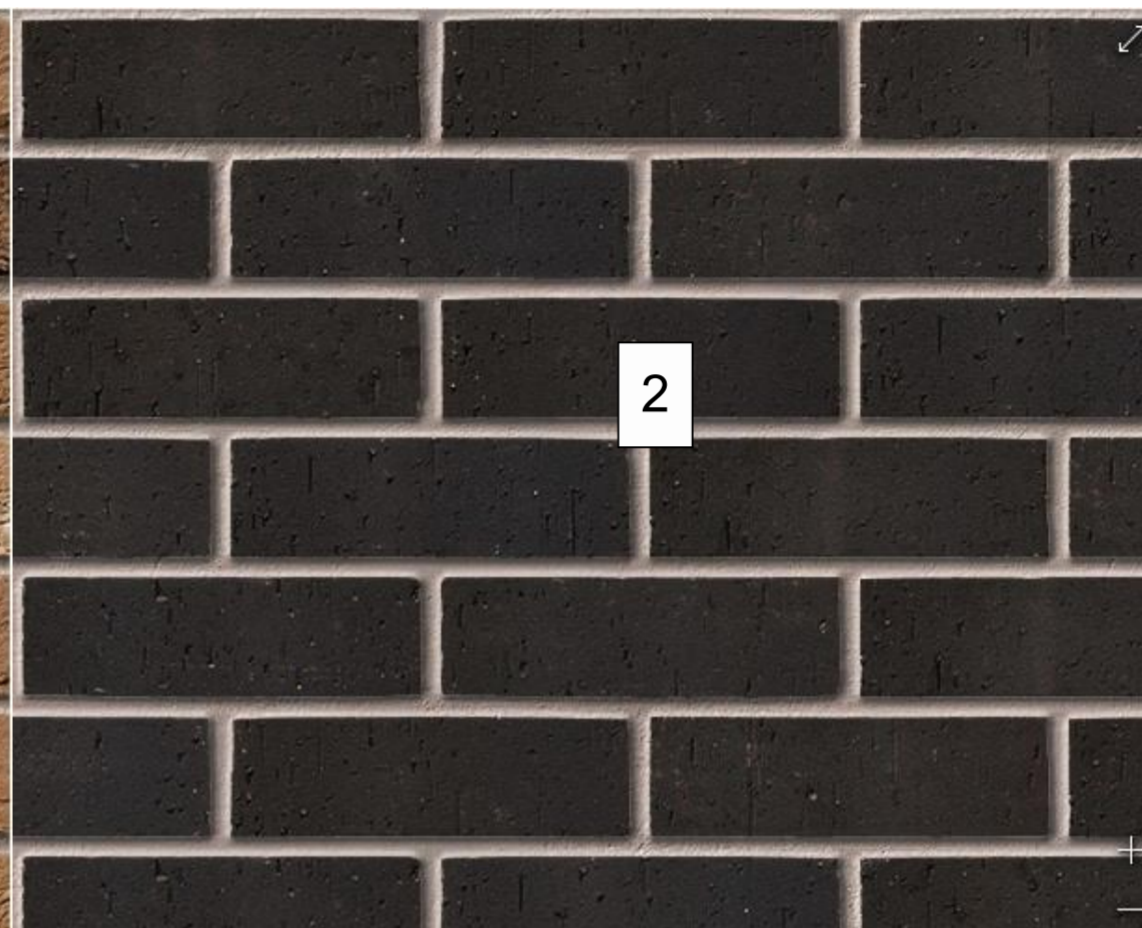
- 1 - Brickwork - Buff Brick - Stretcher Bond - Ibstock, Ivanoe Athena Blend (A0061A).
- 2 - Brickwork - Dark Brick - Stretcher Bond - Ibstock, Himley Ebony Black (A0354A).
- 3 - Aluminium Cladding system for Entrances and Sports Hall.
- 4 - Concrete Grey RAL7023 for Windows, Aluminium detailing and Sports Hall.
- 5 - Pastel Blue RAL5024 for feature colour Entrances.
- 6 - Mortar (same for both brickwork types) - Bucket Handle Profile - Silka, Parex Standard Mortar - Light Grey.
- 7 - School Signage - Stainless Steel

6



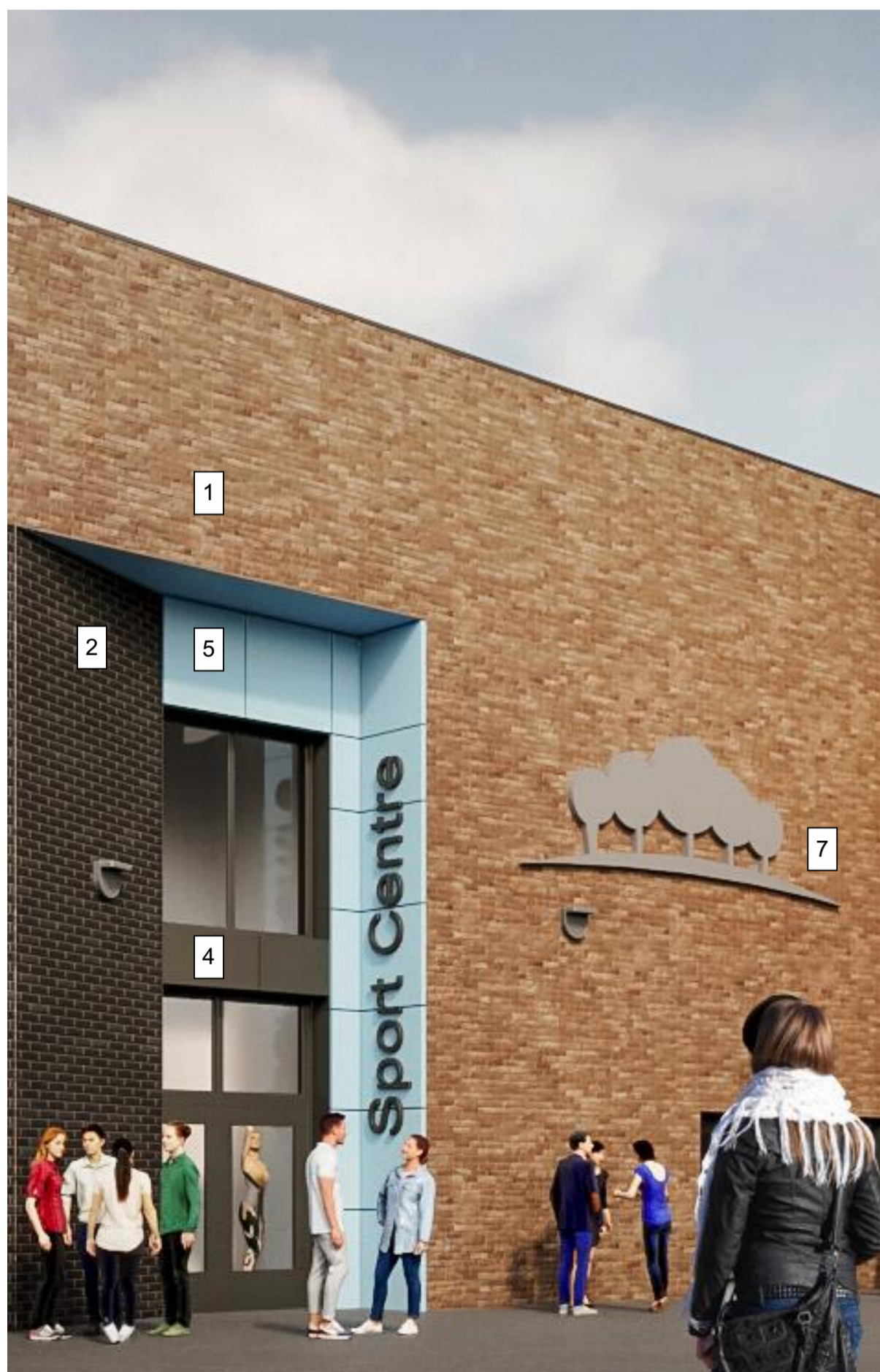
1

Brickwork: Stretcher Bond - Ivanoe Athena Blend
Mortar: Bucket Handle Profile - Light Grey



2

Brickwork: Stretcher Bond - Himley Ebony Black
Mortar: Bucket Handle Profile - Light Grey



Indicative Visualisation Reference



Elevation extract to indicate general window/ brick arrangements

This document is © Bond Bryan Architects Ltd.
If in doubt ASK. Drawing measurements shall not be obtained by scaling. Verify all dimensions prior to construction.
Immediately report any discrepancies on this document to the Originator. This document shall be read in conjunction with associated models, specifications and related consultants' documents. All dimensions in mm unless noted otherwise

Key plan	North

Please note:
This page illustrates precedents of materials. Arrangements not representing Orchards Academy setting out. Refer to Elevations.

P02	Reviewed and updated.	DJW	AP	06/02/2024
P01	Issued for planning	DJW	AP	02/06/2023
Rev	Description	Drawn	Checked	Date

B

B O N D B R Y A N

w www.bondbryan.co.uk
e orchards-team@bondbryan.co.uk

DfE

Orchards Academy
St Mary's Rd, Swanley, BR8 7TE

Materials Proposal (External)	
Originator project ref 22237	Purpose of Issue Design Development
Scale(s)	
Paper size A2	Revision description Preliminary

project	originator	volume	level	type	role	number	revision
SRP1072-BBA-	01	-ZZ-	D	-A-		1501	P02

Native model: 22237-Building