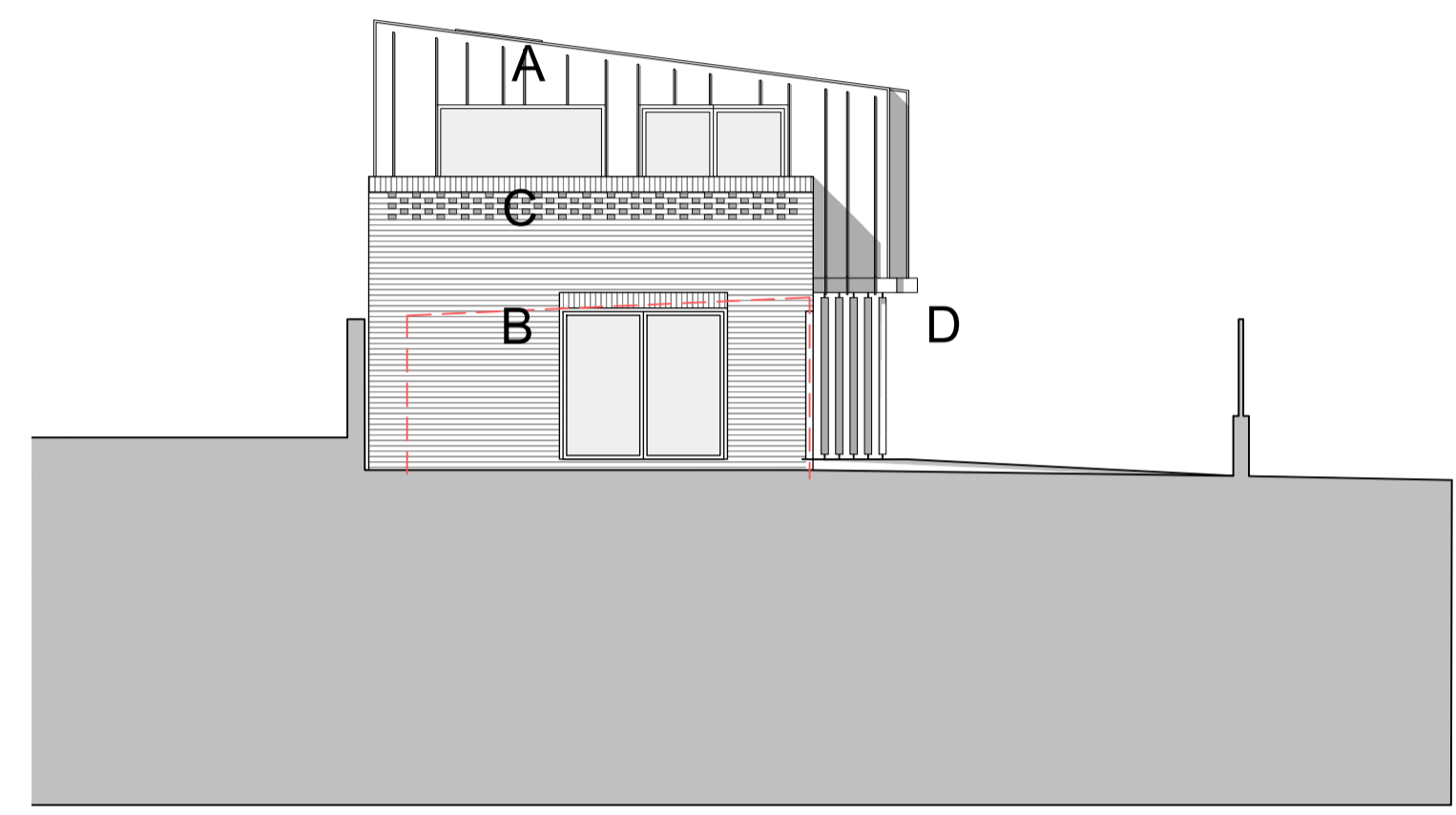
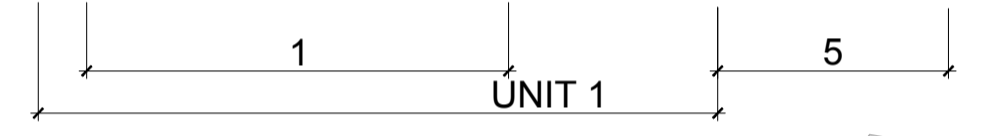


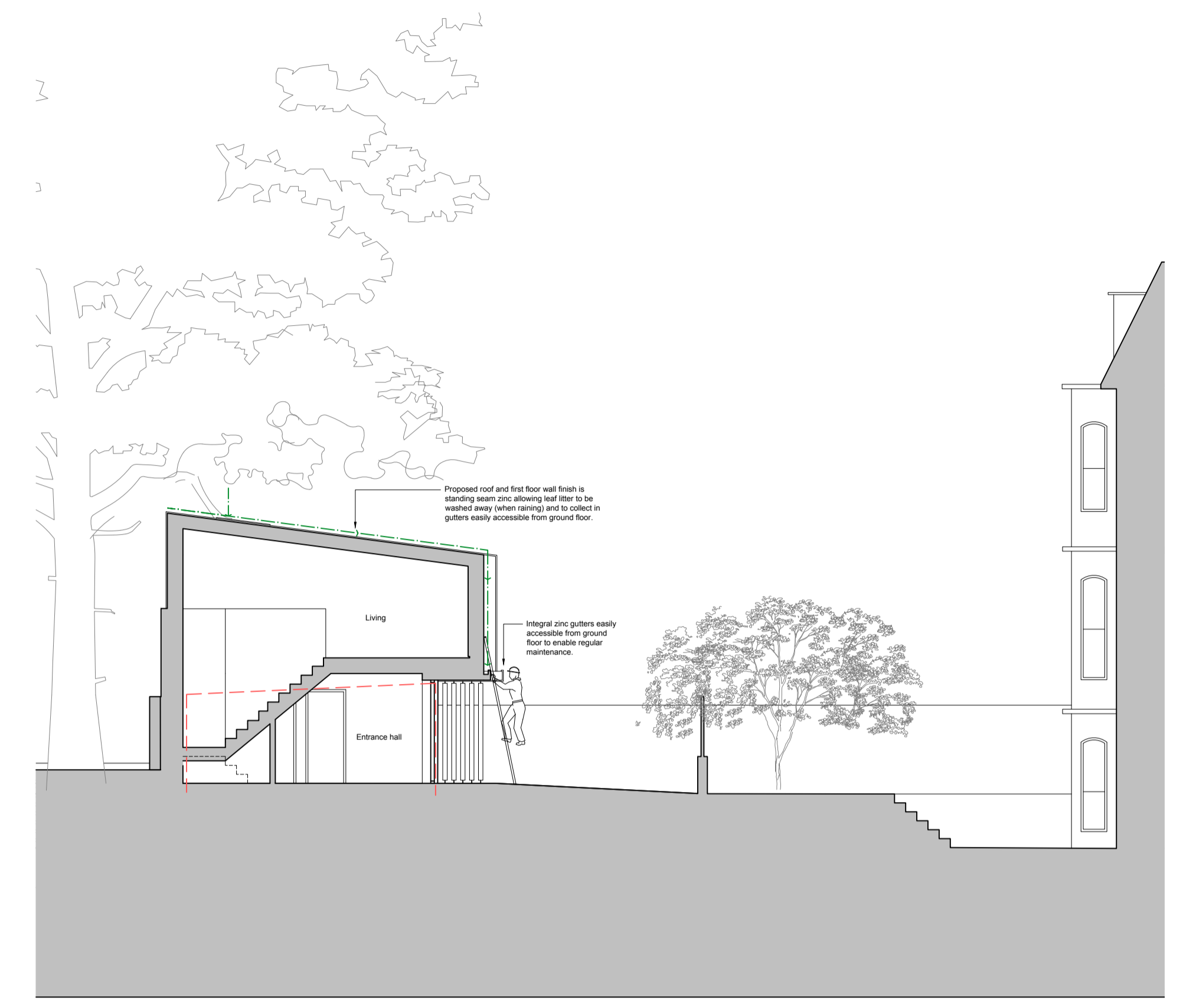
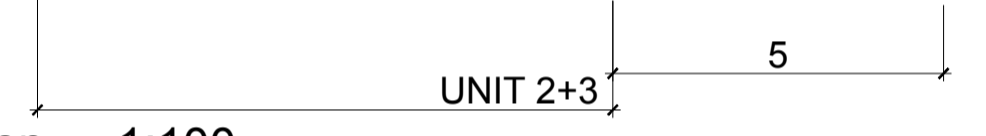
amendments			
rev.	date	comment	auth./chkd.
-	-	-	-



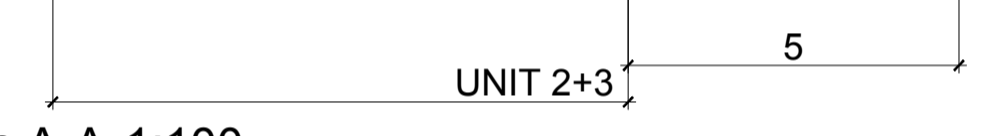
South Elevation 1:100



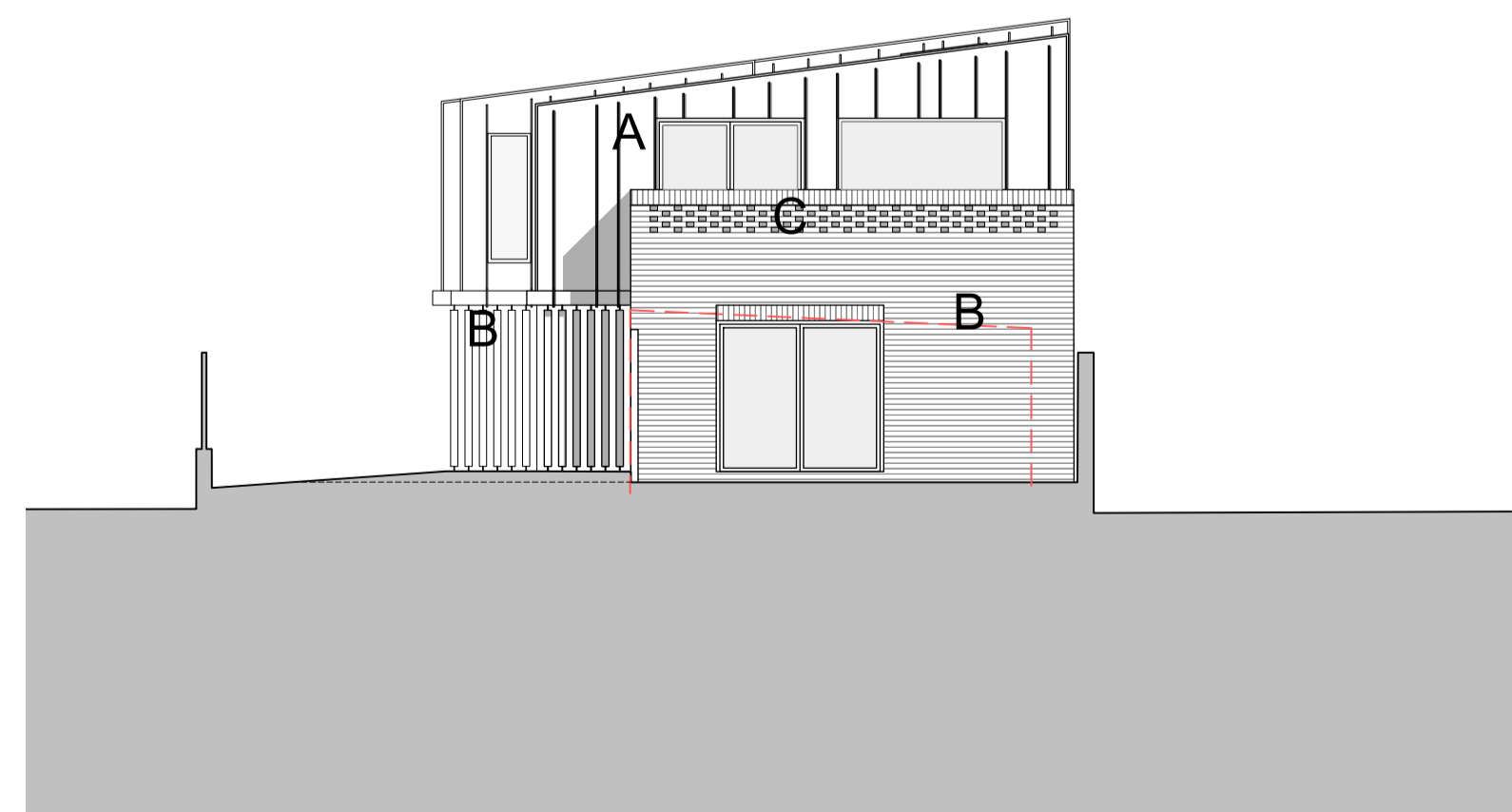
South Elevation 1:100



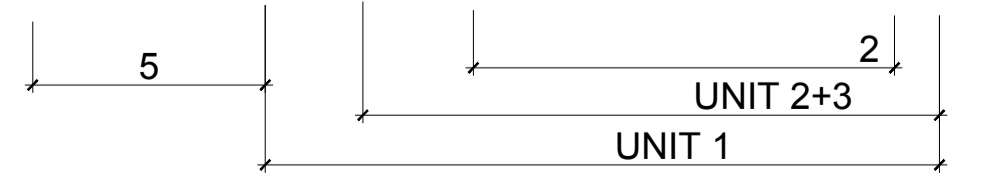
Section A-A 1:100



North Elevation 1:100



North Elevation 1:100



Key to materials:

- A - VM Zinc - Azengar - matt silver
- B - Buff brick with white brick accents
- C - Perforated buff brick
- D - Timber doors/gates

----- Existing garages for demolition

- 1 - South Store Retained
- 2 - North Store Retained
- 3 - Garden Store Unit One
- 4 - Garden Store Unit Two
- 5 - B Neighbour Access Path

client	Skep Projects	drawing number	0697.PL.403	revision	-
project	LRO 57-63 Willbury Road, Hove, BN3 3PB	drawing title	Proposed Side Elevations		
			PLANNING		
drawn by	E.S	checked by	G.I	riba work stage	2
				date	Jan '24
				scale/original sheet size	1:100 @ A1
<small>www.abr.co.uk studio@abrarchitects.co.uk Unit 1, Sels House, 52, John's Road, Hove, BN3 2FX, United Kingdom Hove +44 (0)1273 724 384 Company No 06877117 VAT No 971 4147 17</small>				<small>© ABR Architects Ltd. Check all dimensions on site before work is undertaken. All goods, materials and workmanship to conform with current building regulations, BSS and COP's.</small>	