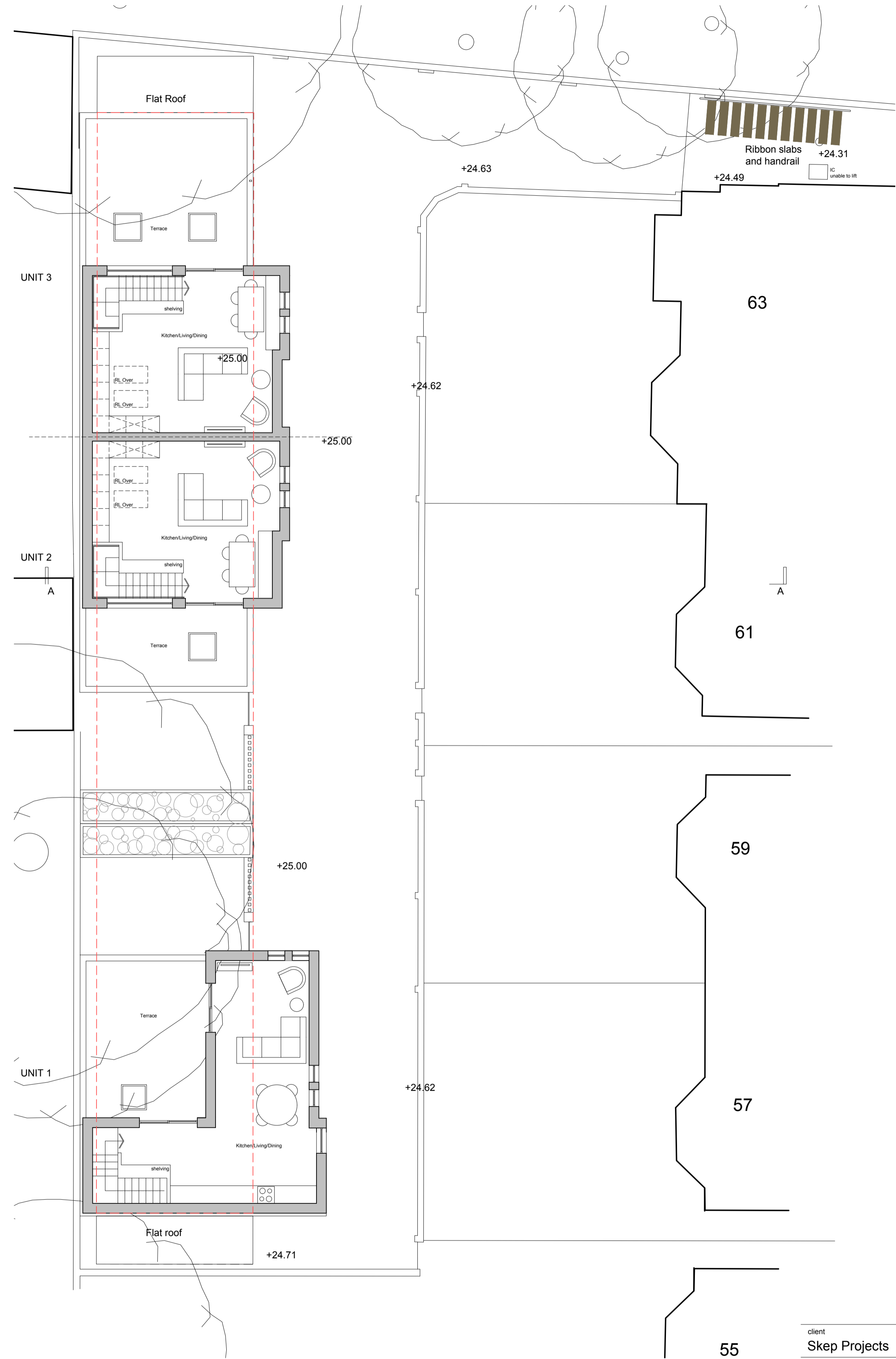
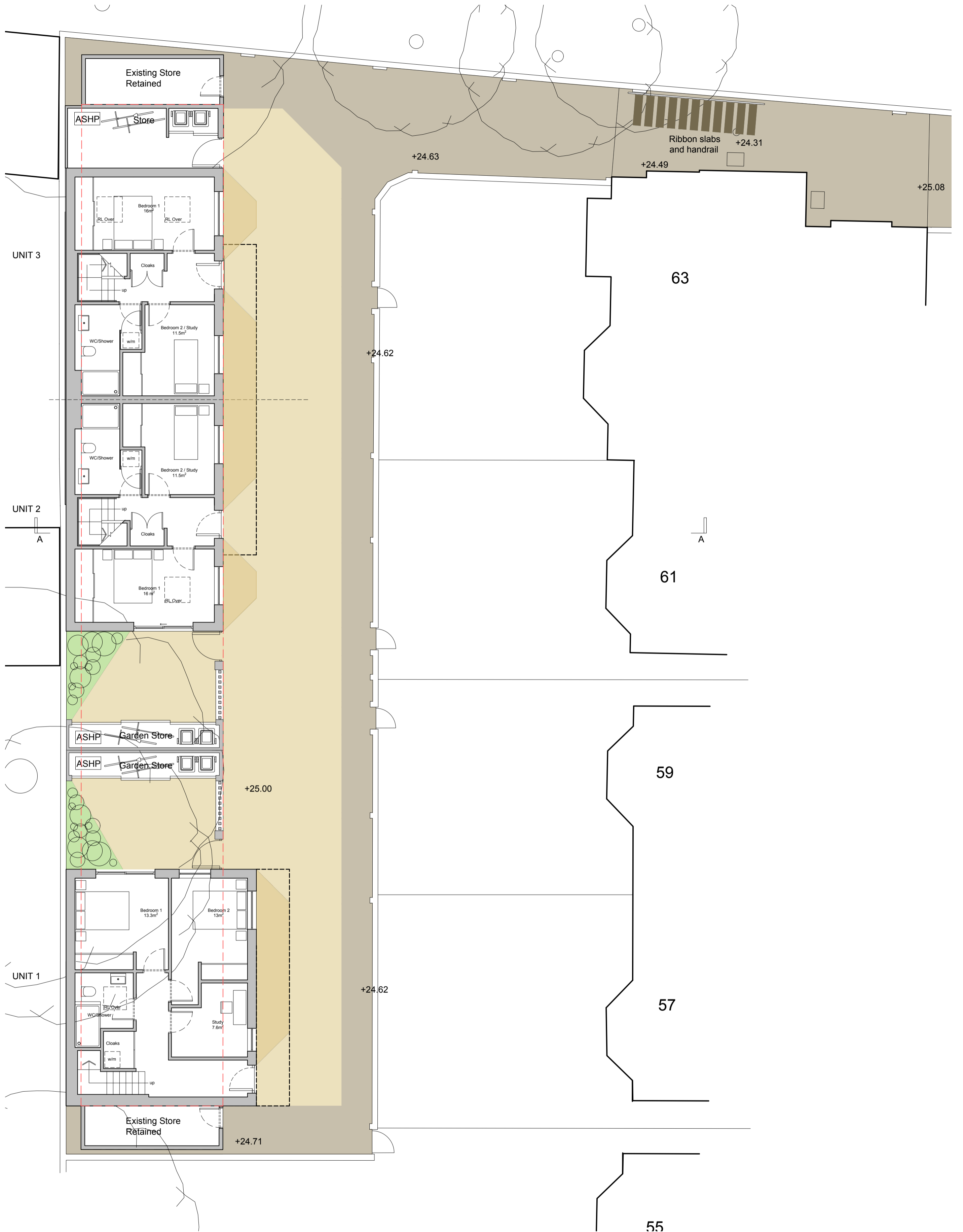


amendments		auth	chkd
rev.	date		
A	29.11.23	ES	GI



Schedule of accommodation:

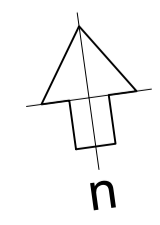
UNIT 1: 2 Bed, 5 Person, 100.5m²
Terrace: 22.5m²

UNIT 2: 2 Bed, 4 Person, 84m²
Terrace: 16m²

UNIT 3: 2 Bed, 4 Person, 84m²
Terrace: 30.5m²

- Ground Floor Plan 1:100
- Type A brick paviors
- Type B brick paviors
- Cobbled ground surface
- Biodiverse ground planting

--- Existing garages to be demolished



client	drawing number	revision
Skep Projects	0697.PL.401	A
project	drawing title	
LRO 57-63 Willbury Road, Hove, BN3 3PB	Proposed Ground and First Floor Plans	PLANNING
drawn by	checked by	riba work stage
ES	G.I	-
date	scale/original sheet size	
Jan '24	1:100 @ A1	