



Sirius Geotechnical Ltd  
Russel House  
Mill Road  
Langley Moor  
Durham  
DH7 8HJ

0191 3789972  
www.thesiriusgroup.com

Mr E Martindale  
Partner Construction  
Ribble House  
Mandale Business Park  
Durham  
DH1 1TH

Date: 13<sup>th</sup> March 2024  
Ref: C8785E/8546/DCB

Dear Elliott,

## GROUND GAS VERIFICATIONS – STEPHENSON ROAD, PETERLEE (PLOTS 21, 22, 29, 30, 32 AND 44 TO 46)

Sirius Geotechnical Ltd (Sirius) was appointed by Partner Construction to undertake verification of the successful implementation of ground gas protection measures at their site at Stephenson Road, Peterlee.

This letter report considers Plots 21, 22, 29, 30, 32 and 44 to 46 at the development, which comprise a combination of semi-detached and link properties. These are the final plots to be verified for gas protection and this correspondence concludes the verification process for the site.

---

### INTRODUCTION

In connection with the site and the proposed development, a number of site investigations have been completed by Sirius Geotechnical Ltd (SGL), most relevant being Sirius' Gas risk letter report Ref C8785/7712/MG/MG dated 30<sup>th</sup> October 2020.

The report concluded that the ground gas regime for the site represents "Characteristic Situation 2 – CS2", due to elevated carbon dioxide, and locally methane concentrations, associated with deep made ground, hence the requirement for ground gas protection measures. Sirius' remediation strategy ref C8785 Remediation Strategy and Gas Protection Verification Plan (June 2022) provides details of the measures to be installed to mitigate risks from ground gas and how the installation of such measures should be verified.

---

## GROUND GAS PROTECTION MEASURES

Gas protection measures utilised at the site comprise a ventilated void (minimum 150mm in height), underlying a “beam and block” floor and with a proprietary gas-resistant membrane.

In accordance with the current (2019) version of BS8485, for residential developments, CS2 conditions require 3.5 protection points, which in this case would be achieved by the combination of the ventilated void (minimum 1.5 points) and the verified membrane (2 points).

The membrane used was a “Solshield Ultra” product, with associated Solcourse shaped cavity trays and approved detailing membrane used to form corners and seal service penetrations. It is understood that the membrane was installed by a qualified specialist company (Chris Wood) who hold the NVQ Level 2 diploma. A copy of the Solshield Ultra datasheets are included with this letter.

---

## VERIFICATION WORKS

Verification works were undertaken as summarised in Table 1 below.

Date	Verification completed	Plot Nos	Completed by
23.11.22	Visual inspection of subfloor voids	21	Sirius
30.08.23	Inspection of membranes	21 and 22	Site manager
30.08.23	Inspection of membranes	29 and 30	Site manager
30.08.23	Inspection of membranes	44 to 46	Site manager
15.01.24	Internal service penetrations	21, 22, 44, 45, 46	Site manager
11.03.24	Internal service penetrations	29 and 30	Site manager

Membrane joints were in the form of heat-welds, and where penetration of the membrane had locally occurred, patches of self-adhesive bitumen tape or off cut patches of the membrane which had been heat welded had been applied, with a minimum dimension of 150mm.

Site record sheets including photographs of the key features of the plots verified are appended.

Sirius have not directly inspected every membrane, sub-floor void or Internal service penetration covered by this report, although have directly inspected other installations on site which were found to meet the required standards of installation. The overall frequency of independent inspections has exceeded that required by the verification strategy. Sirius have been provided with satisfactory records from site for all membranes and seals not directly inspected. This is in compliance with the requirements of the verification plan.

---

CONCLUDING COMMENTS

In conclusion, it is considered that the required gas protection measures have been successfully installed at the plots considered herein.

Care must be employed to ensure that membranes and seals are not damaged by follow on trades as the developments are completed.

We trust that you will forward this letter to the appropriate regulatory bodies and / or warranty provider, but if you require any other information, please do not hesitate to contact us directly.

Yours sincerely,



David Brooks  
Technical Director

For and on behalf of  
Sirius Geotechnical Ltd

Encl.

Attachments Gas Protection Verification Photographs  
Solshield Ultra Datasheet and Foundation Details  
Site Layout Drawing

30<sup>th</sup> August 2023

Gas Protection Verification  
Photographs



01 C8785E Plot 21/22 Membrane

C8785E

Stephenson Road,  
Peterlee

Partner Construction



30<sup>th</sup> August 2023

Gas Protection Verification  
Photographs



02 C8785E Plot 20/21 Corner detail

C8785E

Stephenson Road,  
Peterlee

Partner Construction

30<sup>th</sup> August 2023

Gas Protection Verification  
Photographs



03 C8785E Plot 21/22 Service entry

C8785E

Stephenson Road,  
Peterlee

Partner Construction



30<sup>th</sup> August 2023

Gas Protection Verification  
Photographs



04 C8785E Plot 20/21 Corner details

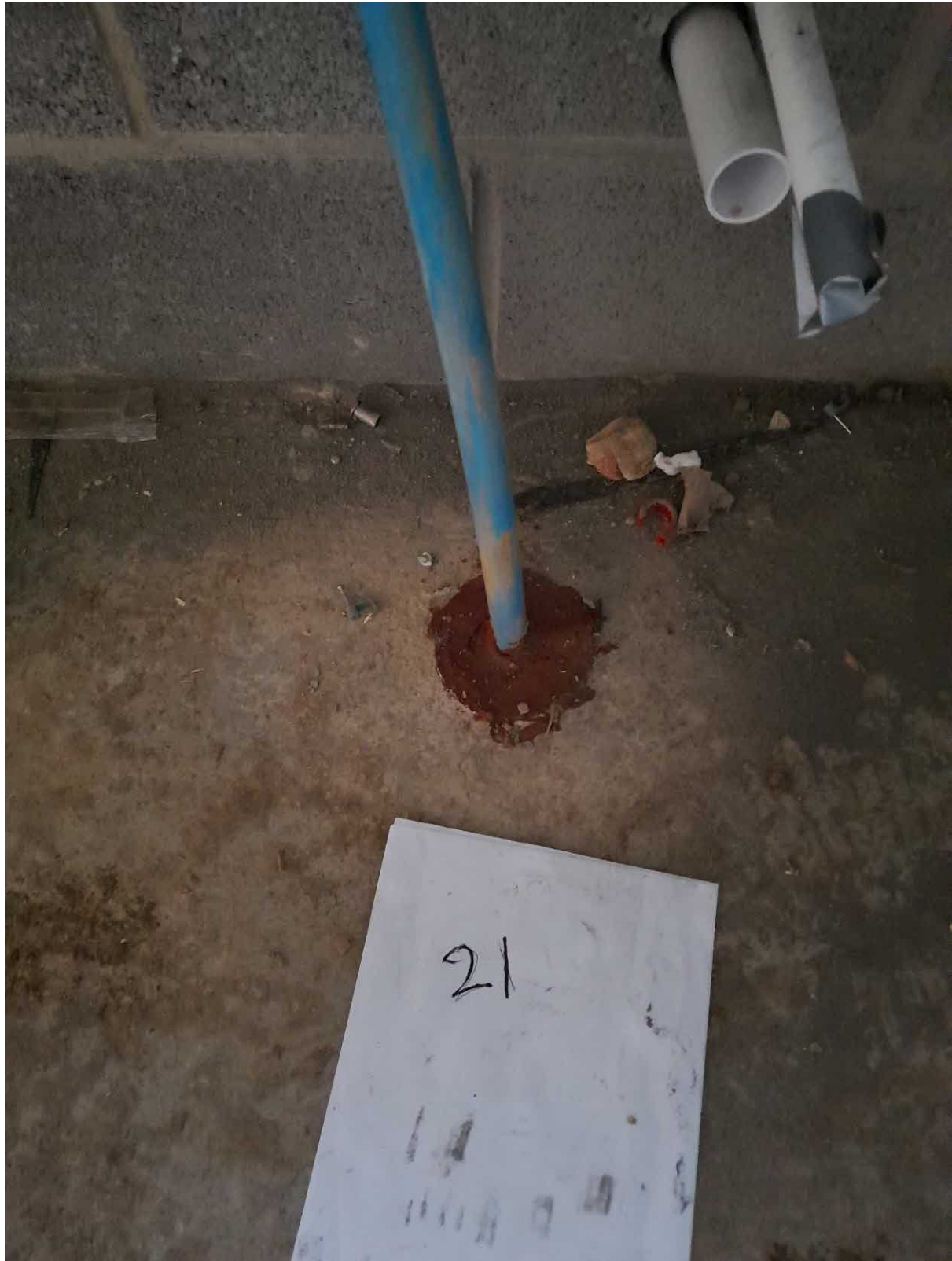
C8785E

Stephenson Road,  
Peterlee

Partner Construction

30<sup>th</sup> August 2023

Gas Protection Verification  
Photographs



05C8785E Plot 21 Internal service seal

C8785E

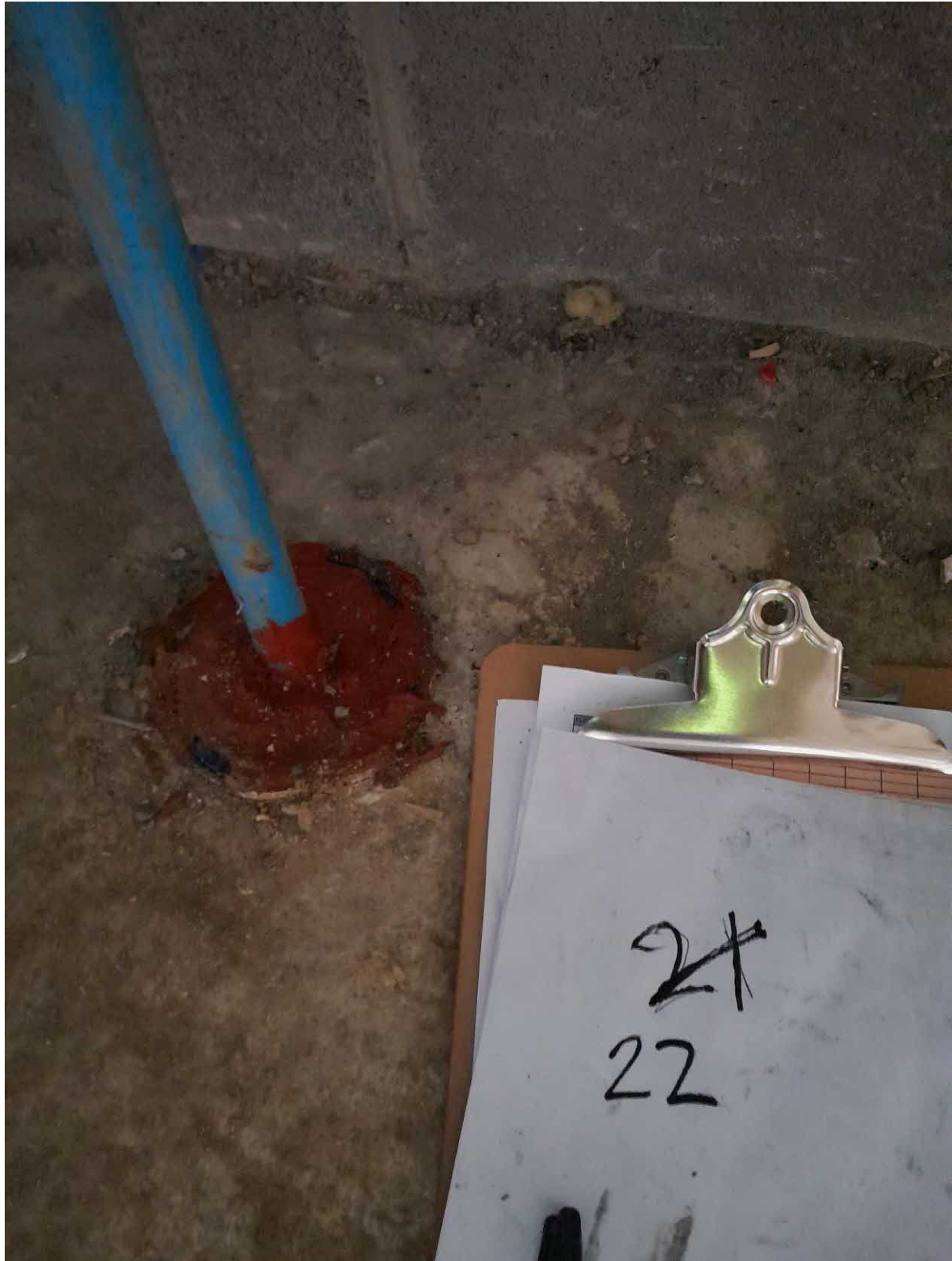
Stephenson Road,  
Peterlee

Partner Construction



30<sup>th</sup> August 2023

Gas Protection Verification  
Photographs



06 C8785E Plot 22 Internal service seal

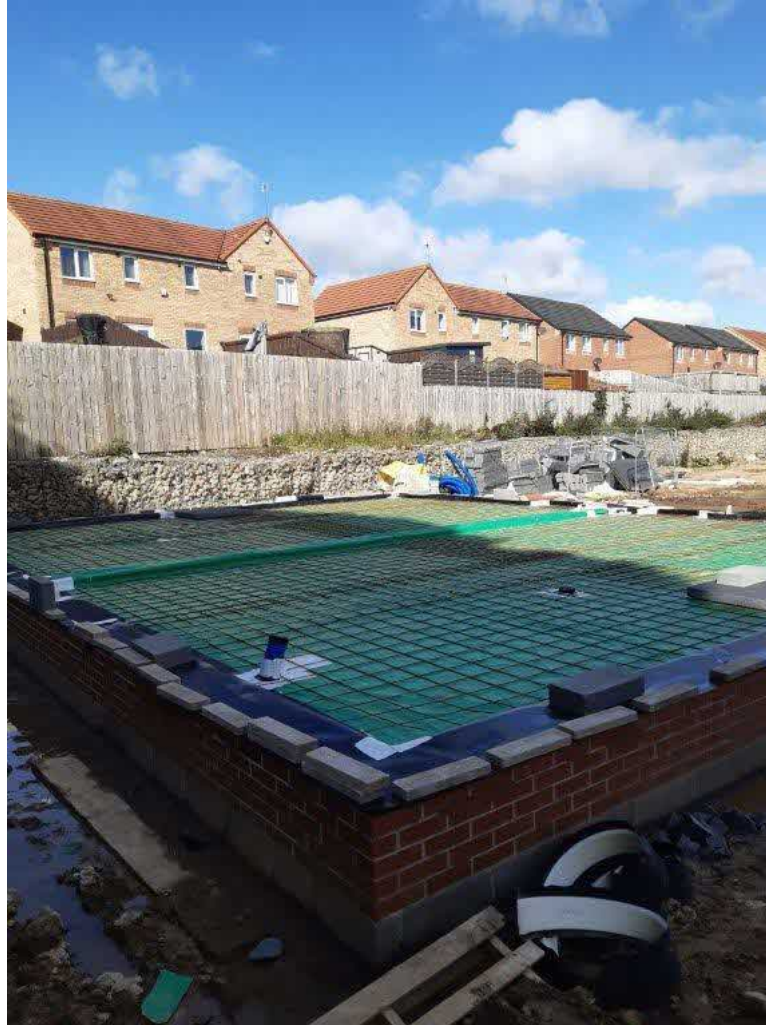
C8785E

Stephenson Road,  
Peterlee

Partner Construction

30<sup>th</sup> August 2023

Gas Protection Verification  
Photographs



01 C8785E Plot 29/30 Membrane

C8785E

Stephenson Road,  
Peterlee

Partner Construction

30<sup>th</sup> August 2023

Gas Protection Verification  
Photographs



02 C8785E Plot 29/30 Corner detail

C8785E

Stephenson Road,  
Peterlee

Partner Construction



30<sup>th</sup> August 2023

Gas Protection Verification  
Photographs



03 C8785E Plot 29/30 Service entry

C8785E

Stephenson Road,  
Peterlee

Partner Construction



04C8785E Plot 29 Internal service seal



05 C8785E Plot 30 Internal service seal



29<sup>th</sup> September 2022 and  
23<sup>rd</sup> January 2023

## Gas Protection Verification Photographs



01 C8585E 29.09.22 Plot 32 Void Space



02 C8785E 23.01.23 Plot 32 Corner

C8785E

Stephenson Road,  
Peterlee

Partner Construction

29<sup>th</sup> September 2022 and  
23<sup>rd</sup> January 2023

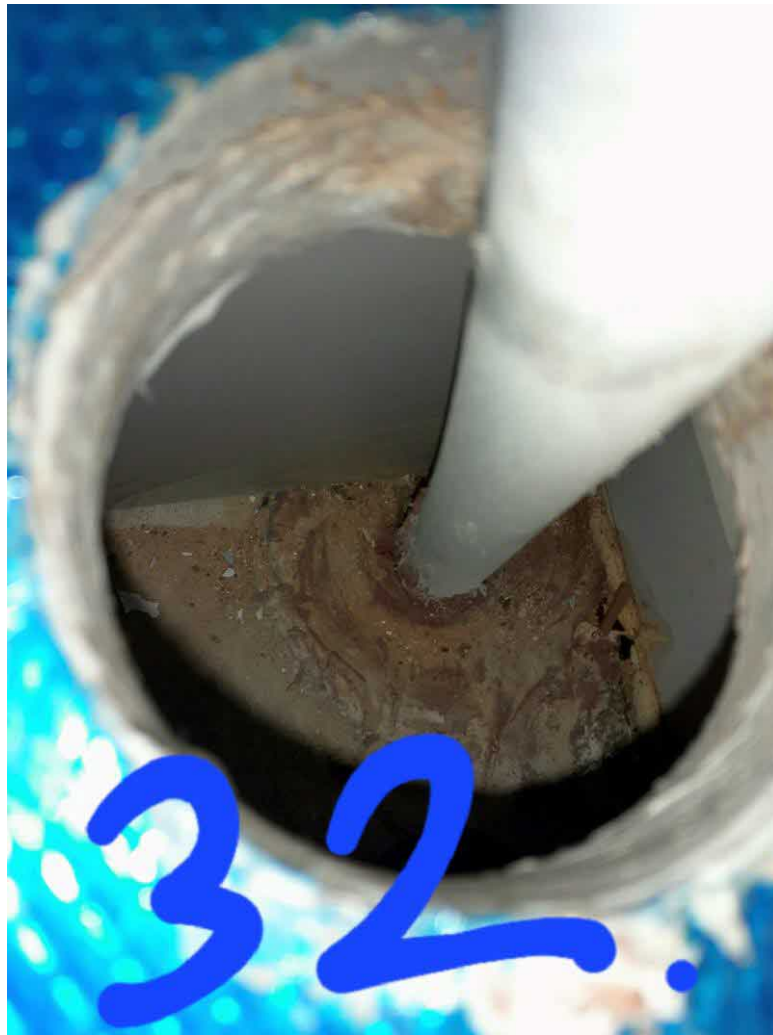
## Gas Protection Verification Photographs



03 C8785E 23.01.23 Plot 32 Service Entry Ducts

29<sup>th</sup> September 2022 and  
23<sup>rd</sup> January 2023

Gas Protection Verification  
Photographs



04 C8785E Plot 32 Internal service entry



8<sup>th</sup> March 2023

Gas Protection Verification  
Photographs



01 C8585E Plot 44 Void Space

C8785E

Stephenson Road,  
Peterlee

Partner Construction



8<sup>th</sup> March 2023

## Gas Protection Verification Photographs



02 C8785E Plots 44, 45, 46 Overview / Corners

**C8785E**

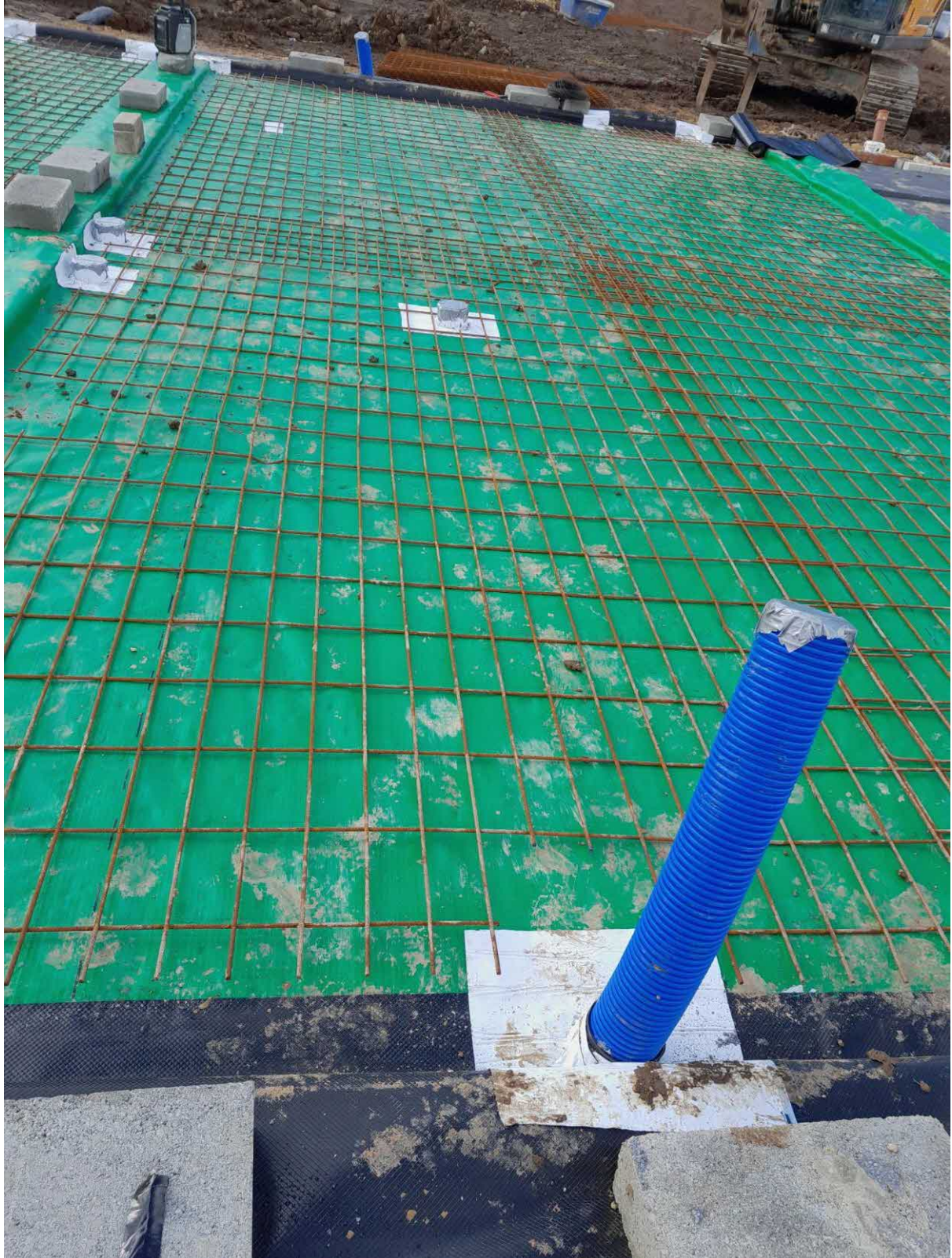
**Stephenson Road,  
Peterlee**

**Partner Construction**



8<sup>th</sup> March 2023

Gas Protection Verification  
Photographs



03 C8785E Plots 44, 45, 46 Service entry

C8785E

Stephenson Road,  
Peterlee

Partner Construction



8<sup>th</sup> March 2023

Gas Protection Verification  
Photographs



04 C8785E Plots 44, 45, 46 Overview

C8785E

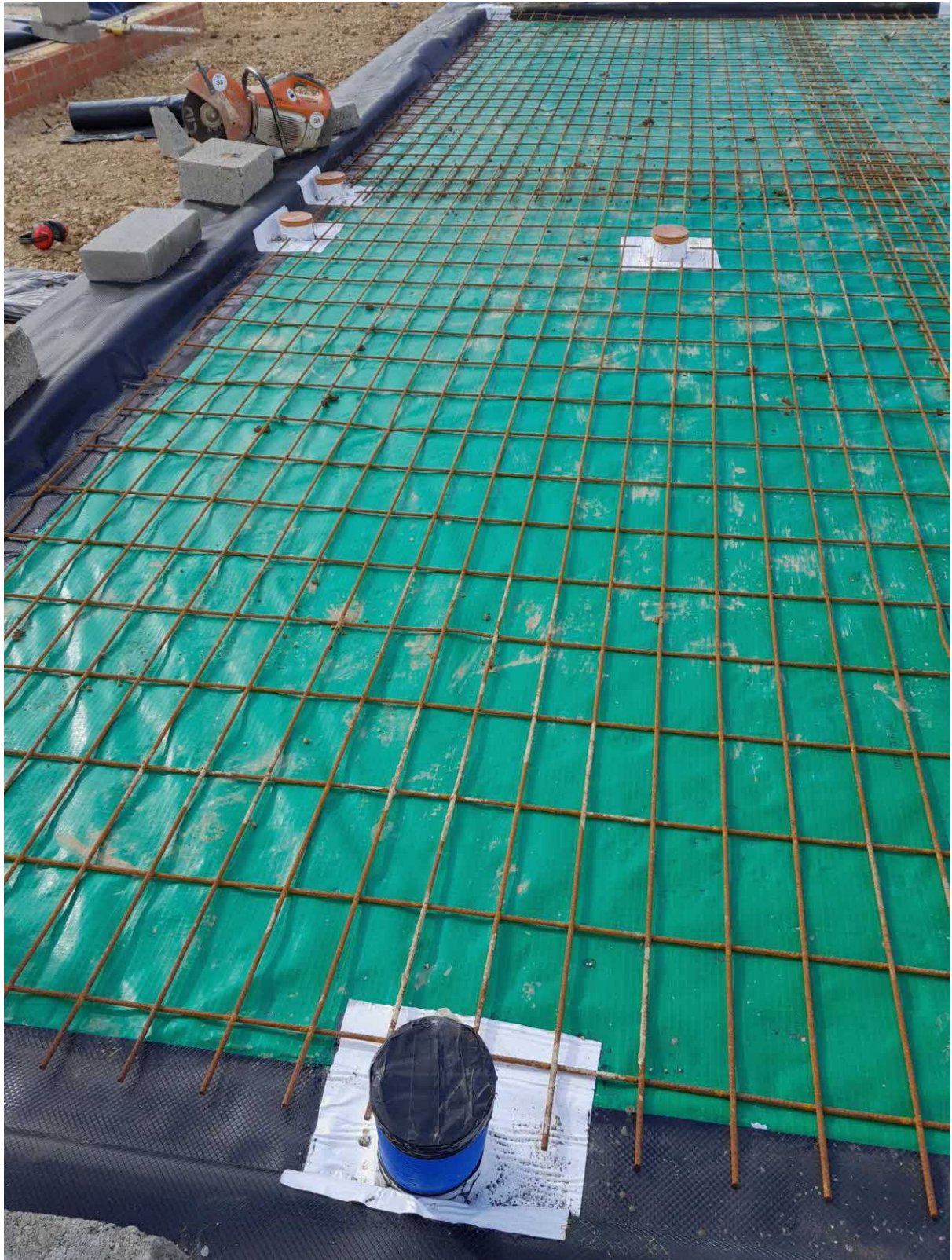
Stephenson Road,  
Peterlee

Partner Construction



8<sup>th</sup> March 2023

Gas Protection Verification  
Photographs



05 C8785E Plots 44, 45, 46 Service entry

C8785E

Stephenson Road,  
Peterlee

Partner Construction



8<sup>th</sup> March 2023

Gas Protection Verification  
Photographs



06 C8785E Plot 44 Internal service seal

C8785E

Stephenson Road,  
Peterlee

Partner Construction



8<sup>th</sup> March 2023

Gas Protection Verification  
Photographs



07 C8785E Plot 45 Internal service seal

C8785E

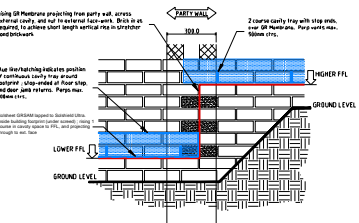
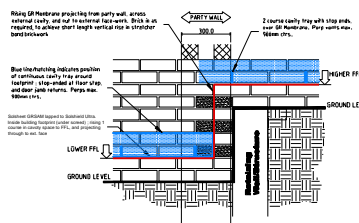
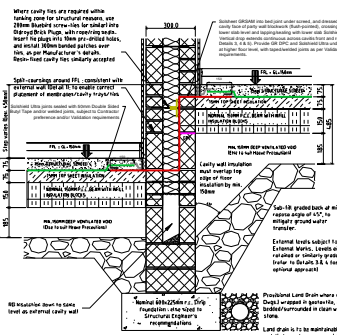
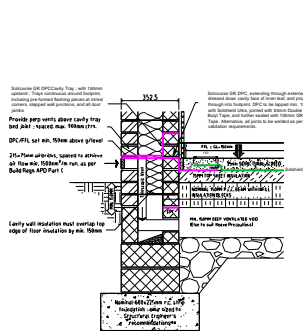
Stephenson Road,  
Peterlee

Partner Construction



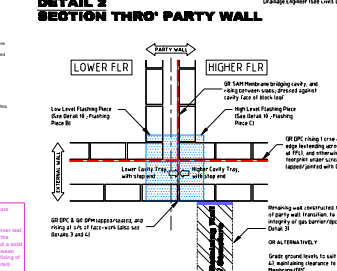
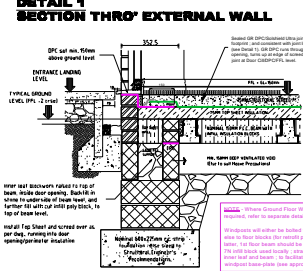
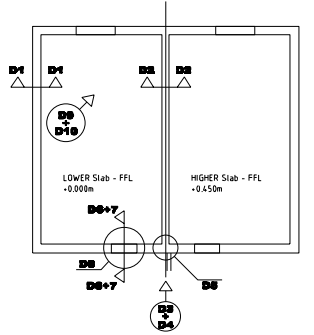
08 C87875 Plot 46 Internal service seal





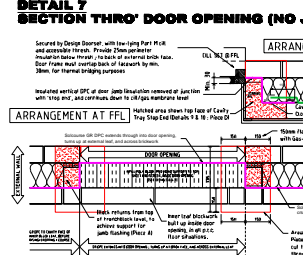
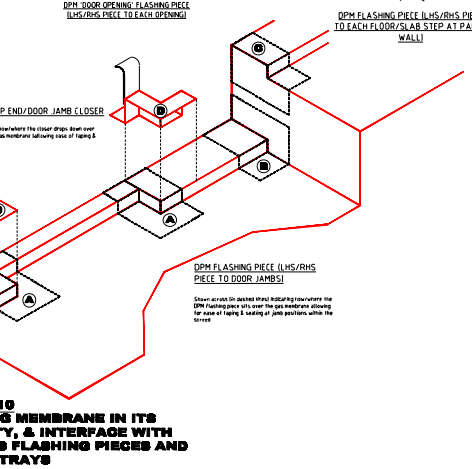
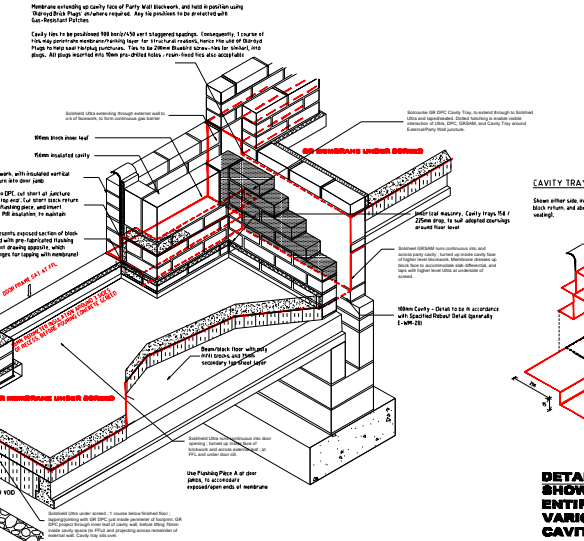
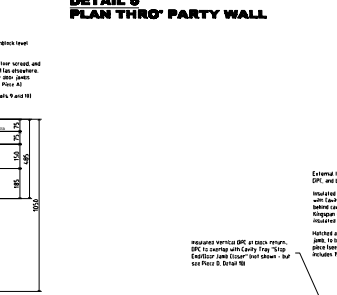
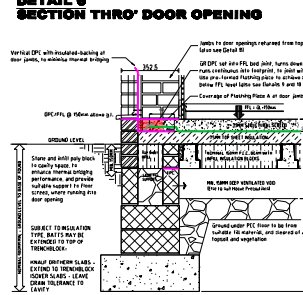
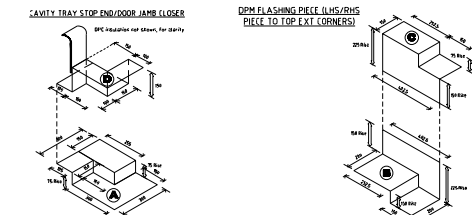
**NOTE - ALL DETAILS ARE BASED UPON SPRINGFIELD 'BIA' FLOOR SYSTEM, INCORPORATING 180MM BEAM DEPTHS, INSULATION 'BETWEEN + OVER' BEAMS, AND 70MM TOP BEHMT. IF WHERE BEAM SIZES DIFFER, BEAM BEARING POINTS TO BE ADJUSTED TO SUIT.**

**IN THE EVENT THAT ALTERNATIVE SYSTEMS ARE ADOPTED WITH INSULATION 'BETWEEN + UNDER' BEAMS (EG. SPRINGVALE 'BEAMSHIELD' / BEAMSHIELD PLUS), SEPARATE DETAILS ARE AVAILABLE.**



ADOPTED DPM MATERIAL SUBJECT TO GROUND CONDITIONS AND REQUIRED GAS PROTECTION. THE FOLLOWING PRODUCT SELECTOR IS BASED UPON SOLCO PRODUCTS:

Gas Product Selector	Radon	CO <sub>2</sub>	Methane	Hydrocarbon Vapours	Hydrocarbon Immersions
SolsShield Reinforced	Yes	Yes		Yes	
SolsShield Ultra	Yes	Yes	Yes	Yes	
SolsShield Flexible Hydrocarbon	Yes	Yes	Yes	Yes	Yes
Solco GP 'Tambon' / Transition	Yes	Yes	Yes	Yes	Yes
SolsShield GR SAM	Yes	Yes	Yes	Yes	
SolsShield Liquid Gas Barrier	Yes	Yes	Yes	Yes	
SolsShield PB-2K	Yes	Yes	Yes	Yes	Yes



**DETAIL 9 ISOMETRIC DETAIL, SHOWING TYPICAL FLOOR/MEMBRANE COMPOSITION, WITH PARTY WALL STEP**

**General Notes**

**Solsheet GR**  
Self-Adhesive Membrane (bonded to Primed Surface)

**SolsShield Ultra**

**Solco 50mm Double Sided Butyl Tape**

**Solco 100mm GR Lap Tape**

**Solcourse GR DPC**

**SolsShield Liquid Gas Barrier**

**FOUNDATION /FLOOR DETAILS PCC (TOP SHEET) : GAS PROTECTED : 'GRADED'**

**SOLCO**  
Unit 51, Portmanmoor Road Industrial Estate  
Ocean Park Cardiff CF24 5HB

Project Name and Address  
**Partner Construction**  
2018 Standard Details - Substructure

Project PCL(2018)-SD-SUB/009  
Date 5-Dec-19  
Scale N.T.S.



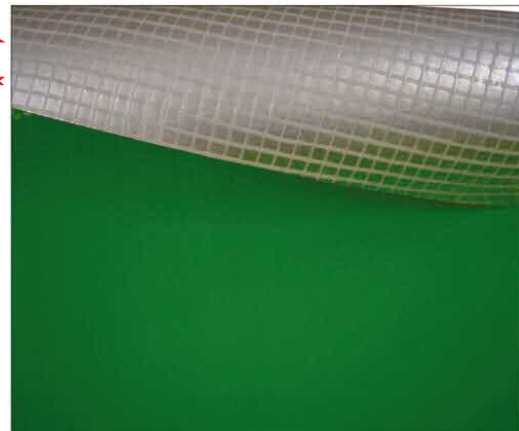
# SOLSHIELD Ultra Gas Barrier



Solshield Ultra Gas Barrier is a flexible, loose laid proprietary gas barrier for use on sites with Radon (RN), Carbon Dioxide (Co<sup>2</sup>), Methane (CH<sup>4</sup>) and Hydrocarbon Vapours.



- **Complies with latest codes of practice as published by BRE, CIRIA & BSI (BS8485:2015).**
- **BBA Cert 16/5382, NHBC Compliant & CE Marked**
- **Suitable to protect against the ingress of Radon (RN), Carbon Dioxide (Co<sup>2</sup>), Methane (CH<sup>4</sup>) and Hydrocarbon/VOC Vapours.**
- **A multi-layer reinforced polyethylene membrane with integral aluminium foil.**
- **Suitable for use as gas protection for NHBC Green, Amber 1, and Amber 2 site situations.**
- **High resistance to puncture.**
- **Also acts as a damp proof membrane.**



## SOLSHIELD - Gas Protection Systems

Last Issue Date: 27.03.19  
Rev E

### Product Description

**Solshield Ultra Gas Barrier** is a multi layer low density polyethylene gas barrier and damp-proof membrane reinforced with a polypropylene grid with an integral aluminium foil, for use in concrete ground floors, above and below slab not subject to hydrostatic pressure, to protect the building against moisture, radon, methane & carbon dioxide from the ground.

**Resistance to Hydrocarbon Vapours** - when the membrane is separated from the ground e.g. above a block and beam floor.

**Resistance to water & water vapour** - the membrane provides an effective barrier to the passage of water & water vapours from the ground.

**Resistance to puncture** - the membrane has a strong resistance to puncture and on smooth surfaces will not be damaged by foot / site traffic.

**Durability** - the membrane remains effective against the ingress of water and water vapour, will restrict the ingress of radon, methane and carbon dioxide during the lifetime of the flooring construction in which it is installed.

### Compliance

• NHBC Standards 2019, Chapters 4.1/5.1. • CE Marking Standard EN13967:2012. • BS8485:2015. • CP 102:1973, section 2. • BS8000-4:1989.

### General

Solshield Ultra Gas Membrane should not be installed at temperatures below 5°C, to prevent the risk of surface condensation.

The membrane must be installed and fixed in accordance with BRE Report BR 211:2015, and guidance given in BS 8485:2015.

The membrane should be installed on a sand blinding layer, Solshield P30 protection fleece, or a smooth concrete float finish. In order to provide a continuous barrier across the cavity, Solshield Ultra Gas Barrier should be taken through the blockwork and incorporated below the damp proof course cavity tray in the outer leaf.

Solshield Ultra Gas Membrane is suitable for installation with beam and block floor application with 150mm clear void in an Amber 2 category project with hydrocarbons, reinforced raft foundation and in situ suspended slab providing the membrane is laid above the ground and not in direct contact with the source of hydrocarbon/VOC vapour.

Long periods of exposure to ultraviolet light will reduce the effectiveness of the membrane.

### Storage & Handling on Site

Solshield Ultra Gas Barrier is classified as non-hazardous (code of practice CP102 1973).

The product is chemically inert and any acids or alkalis present in the subsoil will not affect the membrane.

It is not recommended for use when exposed to sunlight and general outdoor weather conditions for long periods of time. Weathering will not occur when installed.

Rolls should be stored undercover and protected from sunlight, on a flat surface.

Quality control during the laying of the membrane is extremely important the membrane should be protected either through the use of temporary protection over its whole area or the immediate laying of the concrete slab.

## Technical Data & Test Results

Characteristic			Size
Thickness	EN 1849 - 2	mm	0.6
Width	EN 1849 - 2	M	2
Length	EN 1849 - 2	M	50
Weight	EN 1849 - 2	g/m <sup>2</sup>	370
<b>Hydraulic Properties</b>			
Water Column Test	EN 20811		>300
Resistance to Water Penetration	EN 13967, EN 1928		Pass
Durability of watertightness against ageing	EN 1296, EN 13967, EN 1928		Pass
<b>Mechanical Properties</b>			
Resistance to Static Loading	EN 12730 - B	Kg	20
Tensile Strength MD	EN 12311 - 1	N/50mm	600
Tensile Strength CMD	EN 12311 - 1	N/50mm	480
Tensile Elongation MD	EN 12311 - 1	%	20
Tensile Elongation CMD	EN 12311 - 1	%	20
Puncture Resistance	EN 12236	kN	1.25
Resistance to tearing (nail shank) MD	EN 12310 - 1	N	330
Resistance to tearing (nail shank) CMD	EN 12310 - 1	N	400
<b>Durability &amp; Chemical Resistance</b>			
Transmission rate of volatile liquids - Diesel	ISO 6179:2010 (B)	g/m <sup>2</sup> /h	0.246
Transmission rate of volatile liquids - Xylene	ISO 6179:2010 (B)	g/m <sup>2</sup> /h	0.571
Transmission rate of volatile liquids - Toluene	ISO 6179:2010 (B)	g/m <sup>2</sup> /h	0.583
Transmission rate of volatile liquids - Petrol	ISO 6179:2010 (B)	g/m <sup>2</sup> /h	0.135
<b>Gas Permeability</b>			
Methane Permeability	BS EN ISO 15105 - 1	ml/m <sup>2</sup> /day/atm	<0.09
Carbon Dioxide Permeability	BS EN ISO 15105 - 1	ml/m <sup>2</sup> /day/atm	<0.09
Radon Permeability	K124/02/95	m <sup>2</sup> /s	8 x 10 <sup>-15</sup>

# SOLSHIELD - Gas Protection Systems

Last Issue Date: 27.03.19  
Rev E

## Installation

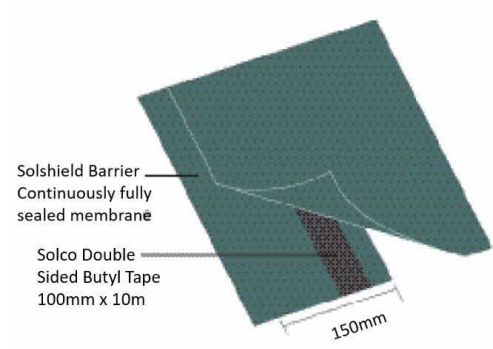
1. The membrane must only be applied to surfaces that have a smooth finish - free from voids, projections and mortar deposits. Surfaces should be dry and free from dust and frost. In order to provide a continuous barrier across the cavity, Solshield Ultra Gas Barrier should be taken through the blockwork and incorporated below the damp proof course cavity tray in the outer leaf.
2. Concrete surfaces should be dense. Vertical surfaces of brickwork and blockwork must be dry and rendered to provide an even surface. Brickwork or blockwork not rendered must be flush pointed to give a smooth surface without sudden changes in level.
3. The membrane is rolled out with the printed side uppermost, ensuring that it is properly aligned. All overlaps should be a minimum of 150 mm.
4. When the membrane is laid below the concrete slab, it should be loose-laid to accommodate any small movements.
5. All surfaces must be dried thoroughly prior to joining. Roll edges can be welded or taped.
6. Service ducts should be vented to prevent the possibility of gas accumulating in confined spaces.
7. The continuity of the gas protection must extend over the footprint of the building, and the membrane must be sealed to a gas-resistant damp-proof course where required.
8. The membrane should be covered by a screed or other protective layer, such as Solco Protection Fleece, as soon as possible after installation. Care must be taken to avoid damage to the membrane during construction if blockwork protection is used.
9. The membrane installation should be subject to third-party independent validation, in accordance with BS 8485 : 2015.

## Jointing Detail

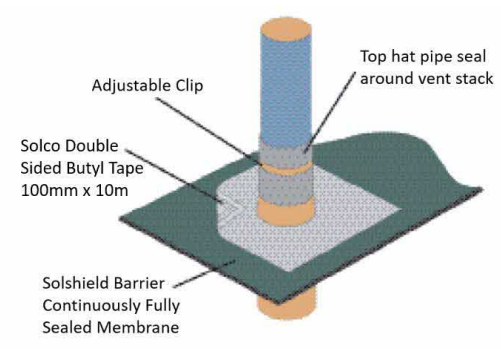
We recommend that particularly in situations where site investigation demonstrates chemicals or harmful gases are present in significant concentrations, all of our gas barriers are to be heat welded or tape jointed - ensuring the integrity of the membrane at the joint location. Seam welding provides maximum performance integrity and enables installers to complete installations quickly and efficiently.

Apply Solco Double Sided Butyl Tape 50mm from the membrane edge, leaving the backing paper on. Lay the next width of membrane overlapping the first by 150mm. Remove the backing paper from the double sided butyl tape and join the top sheet to the bottom sheet, by applying pressure with a hand roller. Where the membranes overlap apply the Solco single sided foil tape, equidistant on both membranes (see detail). All service entry points must have airtight seals Top hats and corner pre-forms must be sealed using double sided butyl tape.

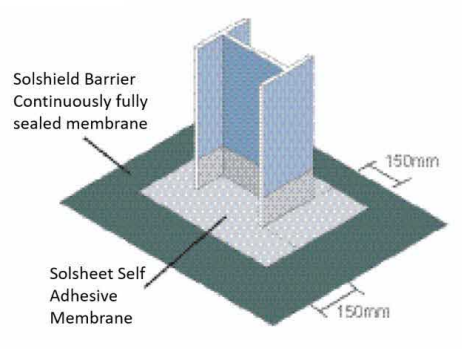
## Typical Jointing Details for Solshield Ultra Gas Barrier



**Typical Lap Detail**



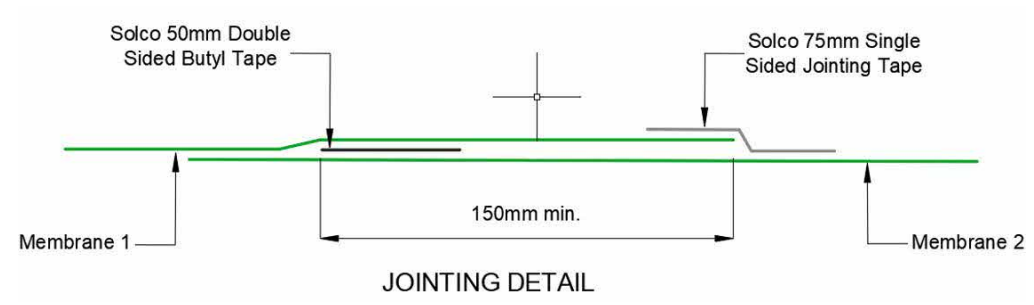
**Typical Penetration Detail**



**Typical Column Detail**

**Note:**

All service entry points must have airtight seals. Top hats and corner pre-forms must be sealed using double sided butyl tape.



### Venting

Solshield Ultra Gas Barrier can be used on sites where passive or active ventilation is required. Solshield Geocomposite Drainage & Venting Mat should be used in conjunction with the relative vent connectors where required. These types of systems are designed on a bespoke site specific nature, please contact us for our design advice.

### Gas System Accessories



Product	Description	Sizes	Application	Supply
Solco Foil Backed Jointing Tape to BS EN ISO 15105 - 1	Single sided tape for securing laps and joints	75mm x 50m	Securing laps and joints	Rolls
Solco Double sided Butyl Jointing Tape	Butyl Adhesive Tape	50mm x 10m 100mm x 10m	Butyl based double sided tape for joints and laps	Rolls
Solco Top Hat Units	Polymeric	Various	For sealing around penetrations through gas membrane	Each
Solcourse Hydrocarbon DPC	A flexible Tri-polymer DPC	300mm - 1000mm	To prevent the transmission of Radon, CO <sub>2</sub> , Methane Gas and Hydrocarbons	20m Rolls
Solco Gas Sump Units	Part of the Radon Protection System	430 x 430 x 220mm	Radon Sumps are used in full protection areas, where sub floor depressurisation may be required.	Each
Solco XL Jointing Tape	Reinforcing Tape	100, 150 & 300mm wide	Overband tape self-adhesive	100mm x 20m 150mm x 15m 300mm x 20m
Solseal HP Primer	Primer for SA Membrane	10L	Surface Primer	Drums
Solco Protection Boards	Bitumen / Polymeric	3mm thick	For heavy duty use	2m x 1m
Solco Corrugated Board	Plastic Corrugated	2mm thick	For light duty use	2.4m x 1.2m
Solco P30 Fleece	Geotextile Protection	2 x 50mt	For foot traffic	Roll



# SOLCOURSE GR DPC

## Gas Resistant Tri-polymer DPC

Solcourse GR DPC is a specially engineered tri-polymer construction that provides a highly effective barrier against Radon, Methane, Carbon Dioxide and Hydrocarbon gases



- CE Marked
- Gas Resistant to Radon, Methane, CO<sub>2</sub> & Hydrocarbons
- Capable of withstanding high superimposed loads.
- Flexible at low temperatures
- Very High Strength & Puncture Resistant
- Suitable for use with the Solco Cavity Tray System
- Independently Tested



Colour	Product Code	Roll Sizes
Black	SOLCOURSEGRDPC	300mm - 900mm

## SOLCOURSE - DPC / DPM Systems

Last Issue Date: 22.03.15  
Rev 1

### Product Description

Solcourse GR provides protection against the ingress of gases when sealed to both the slab membrane and dpc or cavity tray system. The use of factory welded preformed units, i.e. pipe penetrations, corners, stop ends and changes of level can be used as part of a gas protection scheme for either a passive, or active system. Solcourse GR conforms to the current requirements for use as part of a gas resistant membrane system.

Radon enters buildings by airflow from the underlying ground. The two methods for sealing against Radon are, the passive system, normally achieved by increasing the air tightness of the damp protection within the floors and walls, and an active system, which requires providing a powered radon extraction system by means of an integral fan

In areas where significant concentration of radon is present, sufficient protection can be provided by a well installed damp-proof membrane linked to the damp proof course or sealed to a cavity tray system. Dwellings in areas where higher Radon protection is required should be supplemented by the provision of sub floor ventilation or depressurisation.

### Storage

Solcourse GR DPC is chemically stable and free from solvents and aggressive chemicals. Solcourse GR DPC is safe to handle & requires no specific condition for storage or disposal

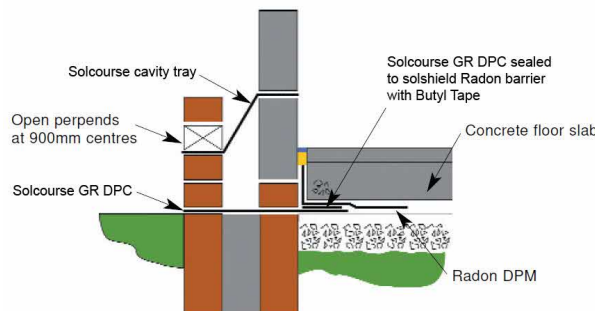


Fig 1: Passive System

Roll Width	Roll Length	Roll Weight
300mm	20m	6.3 kg
337.5mm	20m	7.2 kg
450mm	20m	9.5 kg
600mm	20m	12.5 kg
900mm	20m	19.0 kg

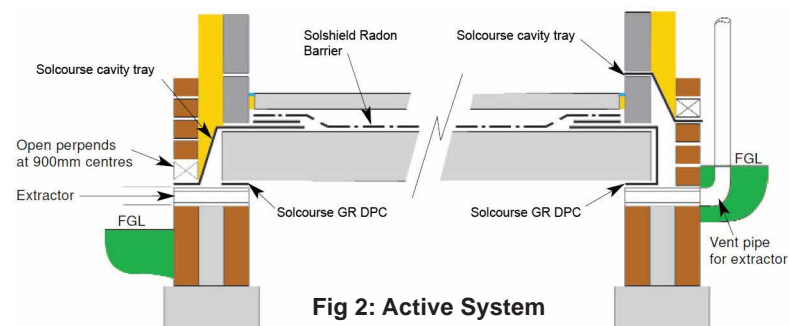


Fig 2: Active System

### Technical Performance & Test Data

Mass	EN 1849-2	g/M <sup>2</sup>	+2% / -2%	921
Tensile Strength - MD / CD	EN EN 12311	N/mm <sup>2</sup>	≥MLV	24 / 22
Resistance to impact	EN 12691	mm	≥MLV	660
Resistance to static loading	EN12730	Kg	≥MLV	20
Resistance to nail tear - MD / CD	EN 12310-1	N	≥MLV	700 / 750
Water vapour permeability	EN 1932	g/ m <sup>2</sup> /day	≥MLV	0.08
Methane permeability	ISO 2782	M <sup>3</sup> / (M <sup>2</sup> .day.atm)	MDV	2.53 x 10 <sup>-4</sup>
Radon Permeability		M <sup>2</sup> /S	≥MLV	9.5 x 10 <sup>-12</sup>

## Gas System Accessories

Product	Description	Sizes	Application	Supply
Solco Foil Backed Jointing Tape	Single sided tape for securing laps & joints	75mm x 50m	Securing Laps & Joints	Rolls
Solco Double sided Butyl Jointing Tape	Butyl Adhesive Tape	50mm x 10m 100mm x 15m	Butyl based double sided tape for joints and laps	Rolls
Solco Top Hat Units	Polymeric	Various	For sealing around penetrations through gas membrane	Each
Solcourse Hydrocarbon DPC	A flexible Tri-polymer DPC	300mm - 1000mm	To prevent the transmission of Radon, CO <sub>2</sub> , Methane Gas & Hydrocarbons	20m Rolls
Solco Gas Sump Units	Part of the Radon Protection System	430 x 430 x 220mm	Radon Sumps are used in full protection areas, where sub floor depressurisation may be required.	Each
Solco XL Jointing Tape	Reinforcing Tape	100, 150 & 300mm wide	overband tape self-adhesive	20m Rolls
Solseal Bitumen Primer	Primer for SA Membrane	5L & 25L	Surface Primer	Drums
Solco Protection Boards	Bitumen / Polymeric	3mm thick	For heavy duty use	2m x 1m
Solco Corrugated Board	Plastic Corrugated	2mm thick	For light duty use	2m x 1m

### Accessory Products for Jointing and Supporting Solcourse DPC Materials

#### Features and benefits

- DPC joint fully supported
- Product enables designer and installer to comply with best practice
- Provides a clean and watertight joint
- Improves installation procedures helping to reduce overall costs

Product	Description	Size(s) / Coverage	Pack Sizes
SOLCO DPC Joint Support System	Polypropylene Support Boards used in conjunction with Solco Butyl DPC Jointing Tape	15 No. 350 x 220mm 1No. Solco Butyl Jointing Tape	System
SOLCO Double sided Butyl Jointing Tape	Butyl double sided Adhesive Tape for securing joints and laps in DPC's, Cavity trays & pre-formed Cloaks	100mm x 10m	Rolls
SOLCO DPC Lap Adhesive	A brush applied synthetic rubber / resin mixture. It is used to seal joints between Solcourse high performance DPCs, cavity trays and preformed cloak unit	750ml (Covers approx 4-5m <sup>2</sup> )	Cans
SOLCO Primer	A rubber modified bituminous primer for preparing block, concrete or metal surfaces prior to the application of Solsheet self adhesive tanking membranes and Solco Butyl DPC Jointing Tape	Coverage is 3 to 4m <sup>2</sup> per litre.	5 Litre Can & 25 Litre Drum
SOLCO DPC Mastic	A thick synthetic rubber mastic adhesive with gap filling properties up to 6mm. Solco DPC Mastic is suitable for bonding surface-fixed Solcourse high performance DPC cavity trays and preformed cloak units to a wide range of common building materials such as block, concrete or metal. No primer is necessary.	Coverage is 1.2 to 2m <sup>2</sup> per litre. A 400ml Cartridge equates to 14 linear meters @ 6mm bead.	2.5 litres Tins 400 ml Cartridge
SOLCO DPC Fixing Strips	Solcourse DPC Fixing Strip is corrosion resistant rigid plastic strip, It is used to surface fix Solcourse high performance DPC cavity trays and preformed cloak units to the inner leaf	25mm x 2mm x 2m pre-drilled at 150mm centres c/w DPC Fixing pins	Pack of 40 LM
SOLCO DPC Fixing Pins (Masonry)	Solco DPC Fixing Pins for Masonry are corrosion resistant and can be used for surface fixing Solcourse high performance DPC systems to any solid internal substrate such as brick, stone and concrete	6mm x 35mm Fixing pins	Pack of 200
SOLCO DPC Fixing Pins (Insulation)	Solco DPC Fixing Pins for Insulation are corrosion resistant and can be used for surface fixing to the rigid insulation of composite inner skins.	6mm x 35mm Fixing pins	Pack of 1000
SOLCO Membrane Fixing plugs	The fixing plug is used in damp proofing applications, to secure the specialist membranes to the base material, usually brickwork and concrete.	70mm x 30mm (head) Sealing washer also available	Pack of 100



# SOLSHEET GR SAM

## Gas Resistant Self Adhesive Membrane

SOLSHEET Gas Resistant Self Adhesive Membrane is a preformed waterproofing and gas proofing system, compatible with concrete, smooth brickwork and blockwork or screeded substrates.

- Excellent resistance to chlorides, sulphates, alkalis and acids.
- Can also be used as a gas resistant DPM - resistant to Radon, Methane and CO<sub>2</sub> gases, as well as Hydrocarbon vapours.
- Cross-laminated film – provides dimensional stability, high tear strength, puncture and impact resistance.
- Flexible - will accommodate minor settlement and shrinkage.
- Meets the requirements of BS 8485:2015 and EN ISO 15105-1.
- Polymer modified bitumen coating - resistant to UV.
- Cold applied – no heating required on site.
- Full design and on-site technical support.
- **BBA Approved & CE Marked.**



Product Details	
Thickness	1.5mm ± 0.2
Widths (m)	≥ 1.0m
Length (m)	20m
Roll Weight	32kg
Colour	Black
Coverage	18.9m <sup>2</sup> (inc. Standard Laps)

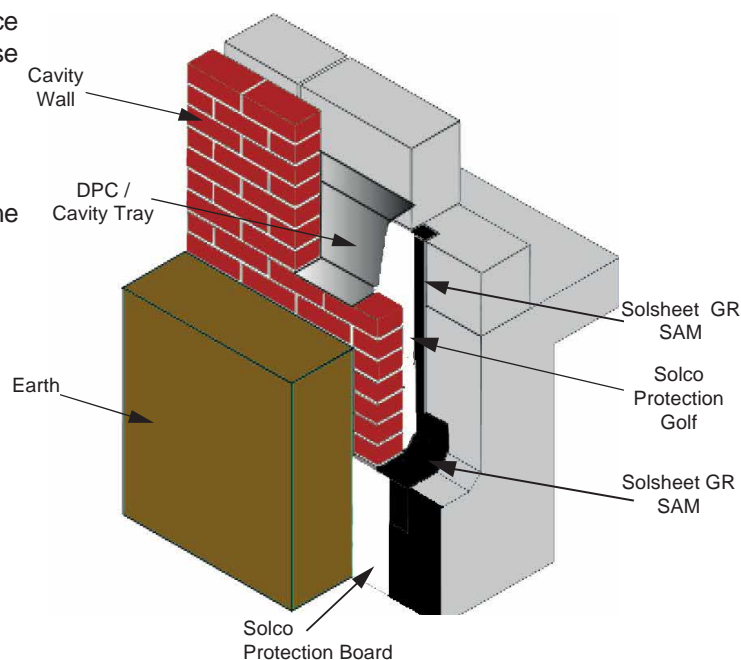
## SOLSHEET - Waterproofing Systems

Last Issue Date: 01.01.19  
Rev 3

SOLSHEET Gas Resistant Self Adhesive Membrane is a 1.5mm thick, cross-laminated, polythene membrane coated on the lower surface with a layer of polymer-modified bitumen - protected by a layer of release film.

Resistance to gas is achieved with a SBS polymer-modified bitumen compound reinforced with HDPE, laminated with a 50 micron thick aluminium film. The membrane has a thin thermally bonded polyethylene protective film on the upper side and a release film on the lower.

SOLSHEET Gas Resistant Self Adhesive Membrane conforms to the requirements of BS 8485 and BS 8102. Substrates should be primed with SOLSEAL Bitumen Primer prior to application. SOLSHEET Gas Resistant Self Adhesive Membrane can be used with Solcourse GR DPC and other Solshield Gas Membranes



### Typical Detail

Please contact our Technical department for project specific application details

Technical Data	Value	Test Method
Watertightness	Pass (10kPa)	EN 1928:2000 (B)
Longitudinal tensile strength	300 ± 70 N/50 mm	UNE-EN 12311-1
Transversal tensile strength	300 ± 70 N/50 mm	UNE-EN 12311-1
Peeling Strength	4 N/mm	UNE-EN 12316
Elongation (L x T)	10 ± 5 %	UNE-EN 12311-1
Resistance to root penetration	Pass	prEN 13984
Resistance to static loading	≥ 5 Kg	UNE-EN 12730
Resistance to impact	NPD	EN 12691:2006
Longitudinal resistance to tearing (nail shank)	180 ± 50 N	UNE-EN 12310-1
Transversal resistance to tearing (nail shank)	140 ± 70 N	UNE-EN 12310-1
Flexibility at low temperature	< -15	UNE-EN 1109
Humidity resistance factor	115.000	EN 1931
Softening point	110°C	UNE-EN 1427
Penetration at 25°C	70 dmm	UNE-EN 1426

Technical Data	Value	Test Method
Water Vapour Transmission	<0.1 g/m <sup>2</sup> /day	EN 1931
Methane Gas Permeability	<2.90 ml/m <sup>2</sup> /day	EN ISO 15105-1
Radon Gas Permeability	< 50 Bq/m <sup>3</sup>	( <sup>222</sup> Rn) (CSI)
Heat resistance at elevated temperature	>90 °C	UN-EN 1110
Dimensional stability at elevated temperature (longitudinal)	< 1.0 %	UNE-EN 1107-1
Dimensional stability at elevated temperature (transversal)	< 1.0 %	UNE-EN 1107-1

# Self Adhesive Membrane Installation Guide

The installation and repair should be subject to third-party independent validation, in accordance with BS 8485 : 2015.

## Surface Preparation: Applied To Concrete, Masonry, Steel & Timber

All surfaces should be smooth, clean and dry. Loosely adhering material and sharp protrusions should be removed by mechanical means. Concrete or renders should be allowed to dry before applying Solsheet membrane.

### Priming:

All vertical surfaces should be primed using **Solseal HP Emulsion/Primer**. Horizontal surfaces do not require priming where the membrane is covered with a screed, floor slab etc. Priming should be carried out as follows:

1. Roll can well before use.
2. Apply at the rate of approximately 6m<sup>2</sup>/L. Only prime the area which is to be covered with Solsheet within the next 4 hours. Allow to dry for at least 1 hour until touch dry. Keep free from dust.
3. On very porous surfaces, use two coats of primer.

### Application:

Waterproofing of Basements, Ground Floors, Reservoirs & Retaining Walls.

Internal angles must always be provided with an adequate sand cement fillet. After priming as previously described a 300mm wide reinforcing strip of Solsheet must be applied with 150mm on either side of the centre of the fillet.

External angles or corners must be provided with a 25mm x 25mm splay and this covered with a 300mm wide strip of **Solsheet XL**, applied equidistant from the centre of the splay.

### Horizontal membrane:

This should preferably be laid prior to the application of the vertical membrane, adequately protected from damage by a minimum 25mm screed or protection board, with the membrane bonded to the vertical surface at least 200mm above the top of the screed so that the vertical Solsheet can be overlaid. If it is not possible to apply the screed over the DPM before the application of the vertical membrane, full and adequate protection must be given to the horizontal membrane to prevent damage.

### Vertical membrane:

Cut off the appropriate length of membrane, then starting at the top of the area to be waterproofed, peel off at least 200mm of release sheet and bond the Solsheet firmly to the surface, tucking the end of the material into the appropriate DPC or chase. Gradually peel off the remainder of the release sheet downwards, at the same time rolling the material against the surface until the bottom of the wall is reached. At the base, the vertical membrane must overlap the horizontal membrane by at least 100mm. All subsequent sheets must overlap the preceding sheet by 50mm at the edges and by 100mm at ends. Overlaps must be thoroughly rolled to ensure adequate bonding.

### Backfilling:

On vertical applications where an abrasive backfill is to be used the Solsheet membrane should be protected by a concrete outer skin, brick skin or Solsheet protection board, the latter being held in place by Solco 50mm Butyl tape.

### Precautions:

Solsheet and Solsheet Primer must not be applied when the surface temperature of the substrate falls below 5°C. When a brick-skin is applied to the face of the vertical Solsheet, care must be taken not to damage the membrane and a gap of 40mm should be left which is filled with sand/cement mortar as work proceeds. Only sufficient Solsheet should be laid which can be protected as work proceeds. When areas of Solsheet are left exposed for any length of time ensure that all edges are held in place by battens.

### Storage & Handling on site

SOLSHEET Self Adhesive Membrane is classified as non-hazardous (code of practice CP102 1973). The product is chemically inert and any acids or alkalis present in the subsoil will not affect the membrane. It is not recommended for use when exposed to sunlight and general outdoor weather conditions for long periods of time. Weathering will not occur when installed. Rolls should be stored undercover. Quality control during the laying of the membrane is extremely important the membrane should be protected either through the use of temporary boarding over its whole area or the immediate laying of the concrete slab.

Rolls should be stored in dry conditions under cover, on their end. The temperature must be maintained at between 5°C and 30°C.

### Repair

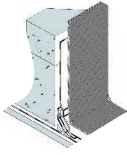
Damage to the products can be adequately repaired by patching prior to the application of protection or backfilling.

# Solsheet Waterproof System Ancillaries



**Solseal HP Emulsion/Primer** is a quick drying liquid applied, low viscosity bitumen solution used to prime and seal porous substrates and promotes the adhesion of bituminous waterproofingsystems prior to application of Solsheet Membranes.

Technical Data	
Packaging	5, 25 & 205 Litres
Coverage	10m <sup>2</sup> /L



**Solco HD Bitumen Protection Board** is a tough, reinforced flexible bitumen modified board for the protection of adhesive waterproofing membrane and other types of waterproofing membranes against damage by abrasive backfill materials and poured concrete

Technical Data	
Sheet Size	1.0m x 2.0m
Thickness	3mm / 6mm
Weight	8kg / 16kg



**Solco XL Jointing / Reinforcing Tape** is a self adhesive tape is used as reinforcing / over-banding tape for securing waterproofing membranes at overlaps edge and corner details and is available as standard or as a Gas Resistant XL Tape.

Technical Data	
Roll Width(s)	100 / 150 / 300mm
Roll Length	20m
Thickness	1.5mm

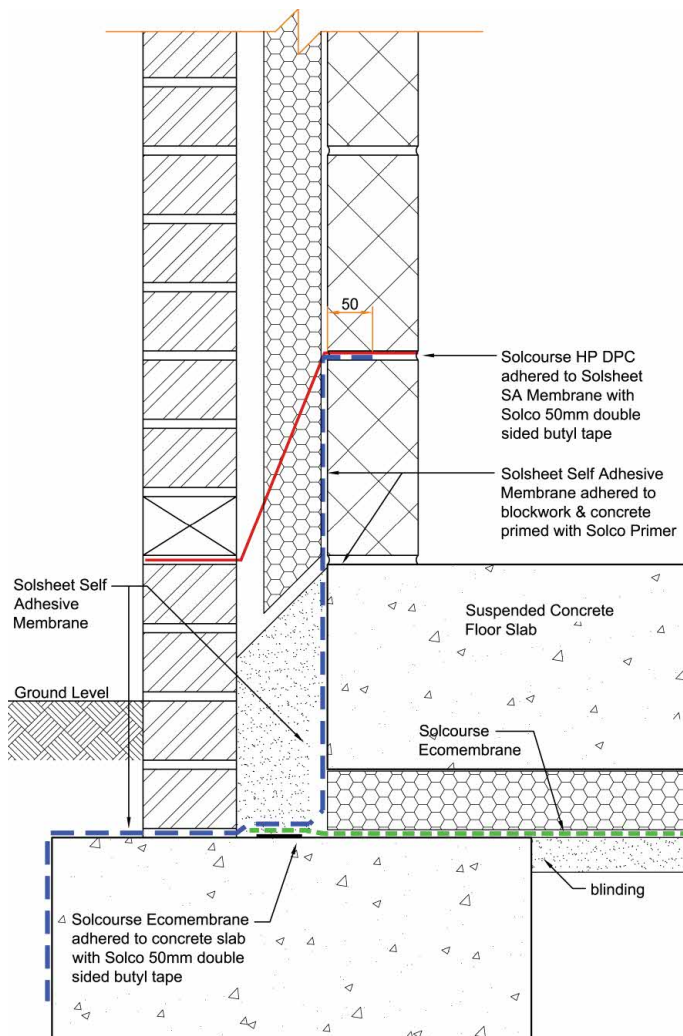


**Solco Butyl Tape** is a black double sided synthetic rubber based high performance butyl mastic tape. It can be used for bonding waterproofing and gas protection membranes at overlaps and for bonding membranes to DPCs, and fixing of other accessories such as top hats

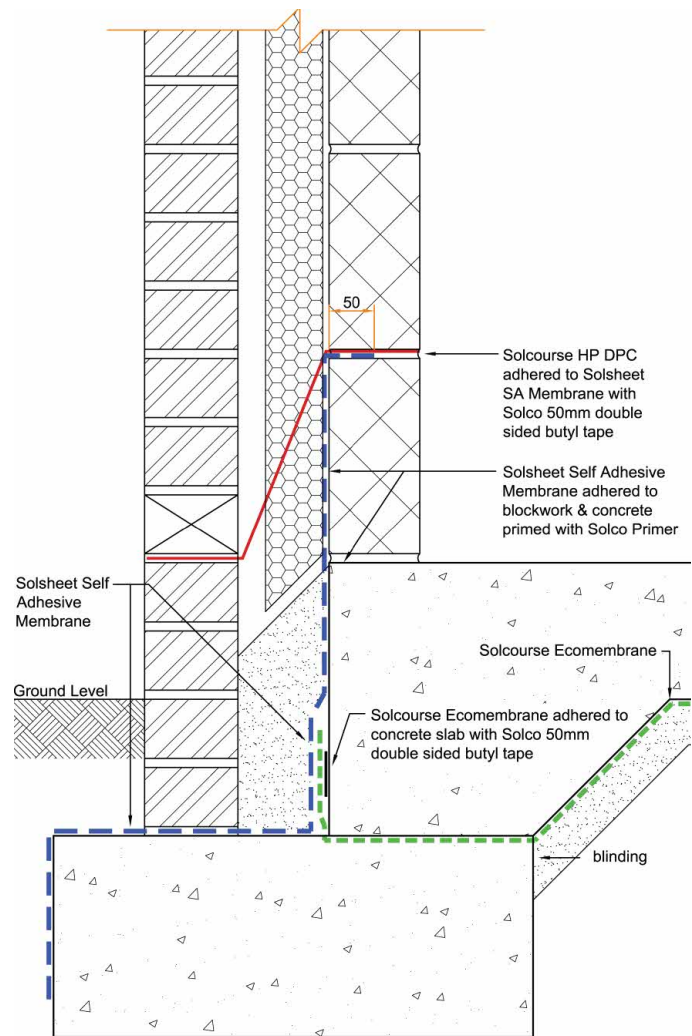
Technical Data	
Roll Width	50 / 100mm
Roll Length	10m

## SOLSHEET - Waterproofing Systems

Last Issue Date: 01.01.19  
Rev 3



**Typical Slab Edge Detail (Suspended)  
Standard Construction**



**Typical Slab Edge Detail (Ground Bearing)  
Standard Construction**

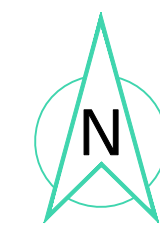
Please contact our Technical department for project specific application details

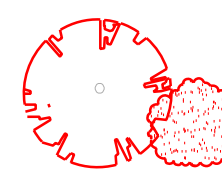




CODE	NDSS	M4(2)	TYPE	NO	SQM	TOTAL SQM	SQFT	TOTAL SQFT
NDS 36	✓	✓	2 Bed 3P	6	63.26	379.56	681	4086
NDS 33 M4(2)	✓	✓	2 Bed 4P	15	80.62	1209.3	868	13020
NDS 13 (fa)	✓		3 Bed 5P	3	94.84	284.52	1021	3063
NDS 31 M4(2)	✓	✓	3 Bed 5P	21	94.84	1991.64	1021	21441
F119			4 BED 6P	6	105.2	631.0	1137	6822
F112			3 Bed 5P	6	83.7	502.2	901	5406
F114			2 Bed 4P	2	72.6	145.2	781	1562
				<b>59</b>		<b>5143.38</b>		<b>55400</b>

Note:  
Do note scale from this drawing.  
This drawing is copyright of Ergo Projects Ltd.  
All dimensions to be checked prior to any work commencing. Any discrepancies to be reported to Ergo Projects immediately.

 **TOTAL SITE AREA - GROSS**  
= 4.63 Acres - 1.88 Hectares

 Indicates trees and hedges to be removed

Note: All perimeter hedges and trees to be cut back where necessary to facilitate construction works

R	Plot 30 & 31 footpath alterations following ENG Drawing 28.04.22	17.05.22
Q	Fence line to follow RTW to the rear of plots 29-33.	10.05.22
P	Plot 5 FP moved	10.02.22
O	Layers amended	31.01.22
N	VP bay adjacent to plot 47 moved 1.2m	25.01.22
M	Private footpaths & parking amended to Partner specification.	20.01.22
L	600mm gravel margin to rear of M4-2 properties. EVCP to plots 17, 18 & 38	06.01.22
K	Footpath amendments to various plots	02.12.21
J	House type names amended to include M4(2).	15.09.21
I	Various amendments further to LA comments July 2021	04.08.21
H	fa added to NDS-13 house type	29.06.21
G	Acoustic fence added to plots 1, 13-17	26.03.21
F	Suds pond updated to suit engineers design	23.03.21
E	Footpath omitted & replaced with landscaping & F-Types reintroduced	15.03.21
D	Layout updated to incorporate NDS house types	12.03.21
C	Various amendments further to Pre-App discussions	04.03.21
B	Mix updated following email from MS on 13.11.20	13.11.20
A	Suds pond added and 3 plots omitted	08.06.20

**ergo**  
0191 229 0231  
info@ergoprojects.co.uk  
Azure Business Centre, High Street,  
Newburn, Newcastle upon Tyne, NE15 8LN  
www.ergoprojects.co.uk

PROJECT:  
**Stephenson Road  
Peterlee**

TITLE:  
**Proposed Site Plan**

DRAWING PURPOSE: Planning	DATE OF DRAWING: May 2020	DRAWN BY: AR
SCALE: 1:500	SHEET SIZE: A1	REVISION: R
PROJECT NO: 654	DRAWING NO: 003	